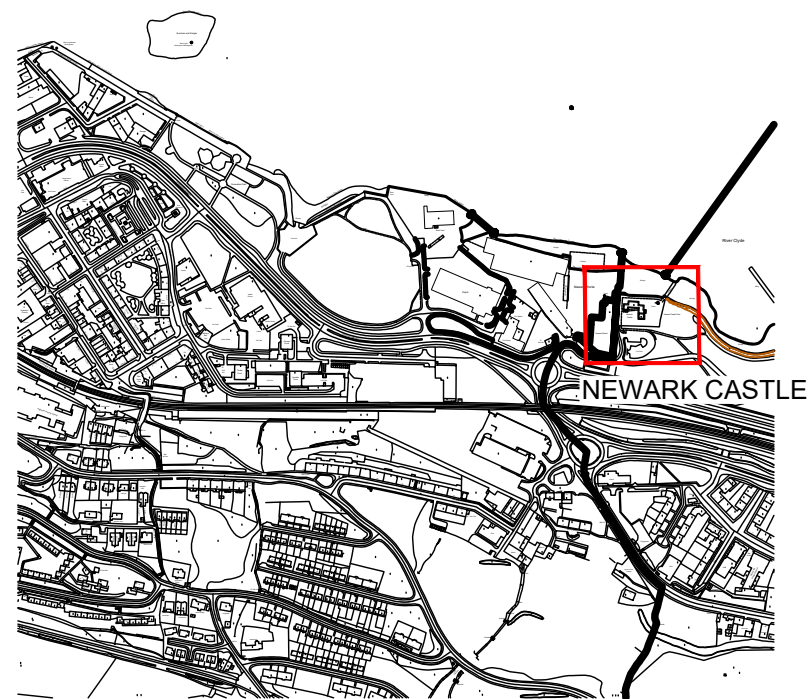


Notes:



LOCATION PLAN
Scale 1:10000 |

Contains Historic Environment Scotland, Ordnance Survey and Aerial Imagery Data
 © Historic Environment Scotland © Crown copyright and database rights 2024
 © Copyright and database rights 2024 Ordnance Survey Licence number AC0000807262
 © Bluesky International Ltd and Getmapping Plc [2024]

Ordnance Survey Data
 You are permitted to use this data solely to enable you to respond to, or interact with, the organisation that provided you with the data. You are not permitted to copy, sub-licence, distribute or sell any of this data to third parties in any form.

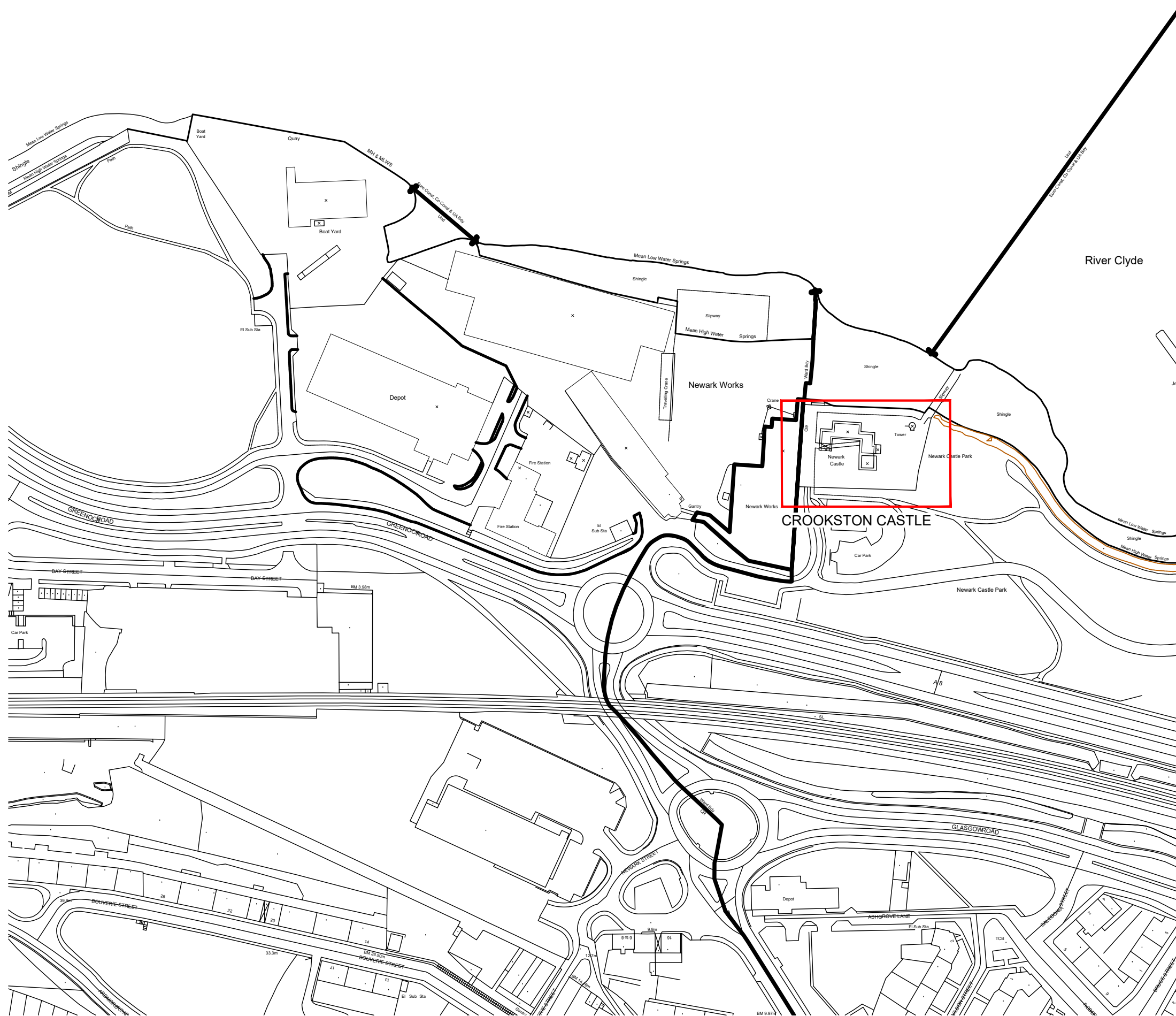
Revisions:

SMCP

MONUMENT	NEWARK CASTLE
PROJECT	NEW TIMBER STEP TO THE GATEHOUSE TURNPIKE STAIR - LOCATION PLAN 1:10000



PROJECT DRAWING NUMBER	122-20241008-001		
SCALE	1:10000 @ A3	ARCHITECT	I. Lambie
DATE	October 2024	DRAWN BY	J. Pottage
ARCHIVE NUMBER	-		



LOCATION PLAN
Scale 1:2000 |

Notes:

Contains Historic Environment Scotland, Ordnance Survey and Aerial Imagery Data
 © Historic Environment Scotland © Crown copyright and database rights 2024
 © Copyright and database rights 2024 Ordnance Survey Licence number AC0000807262
 © Bluesky International Ltd and Getmapping Plc [2024]

Ordnance Survey Data
 You are permitted to use this data solely to enable you to respond to, or interact with, the organisation that provided you with the data. You are not permitted to copy, sub-licence, distribute or sell any of this data to third parties in any form.

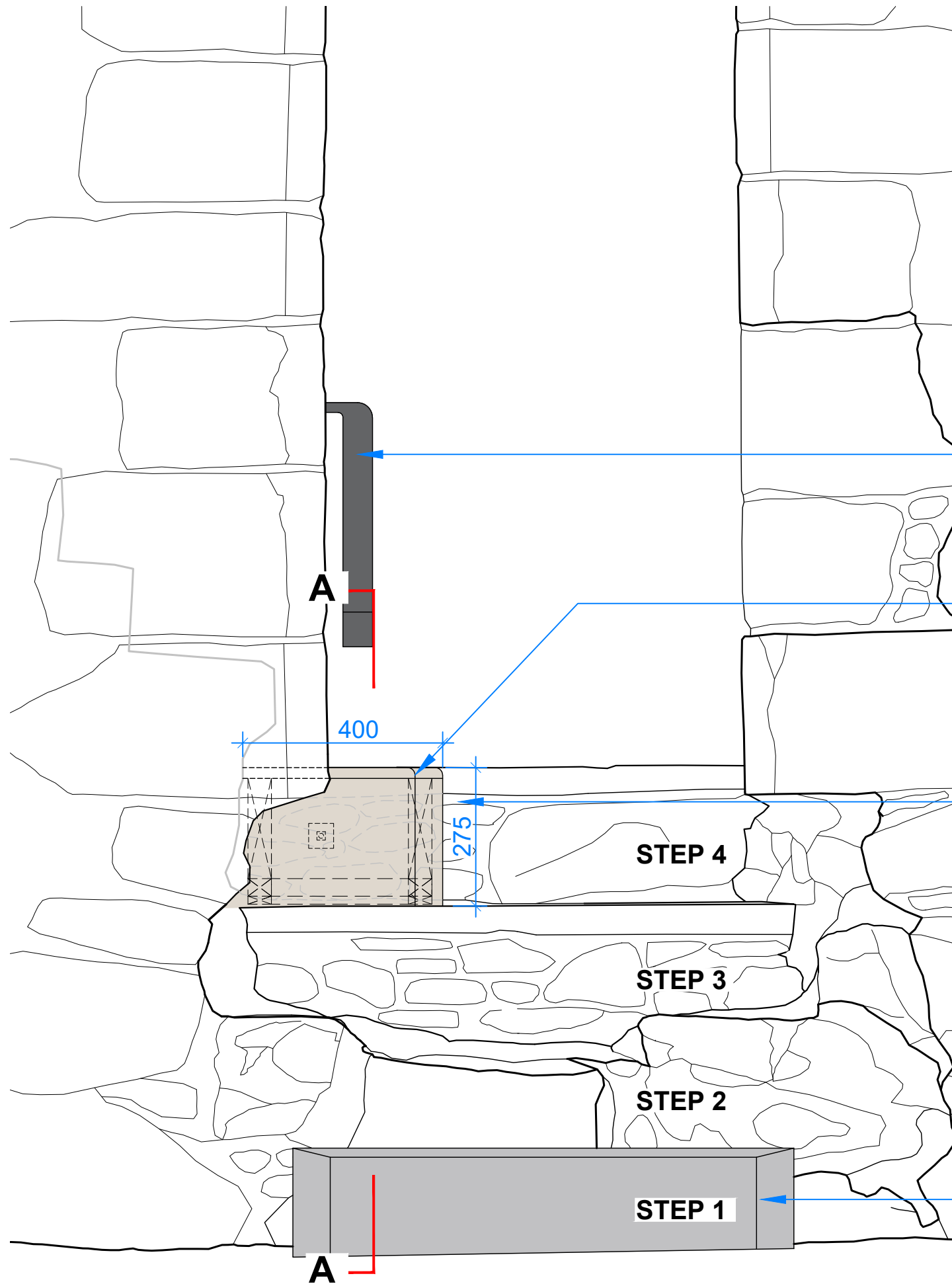
Revisions:

SMCP

MONUMENT	NEWARK CASTLE
PROJECT	NEW TIMBER STEP TO THE GATEHOUSE TURNPIKE STAIR - LOCATION PLAN 1:2000



PROJECT DRAWING NUMBER	122-20241008-002		
SCALE	1:2000 @ A3	ARCHITECT	I. Lambie
DATE	October 2024	DRAWN BY	J. Pottage
ARCHIVE NUMBER	-		



Existing handrail prevents falls down the double height riser made by the new step.

Engineered Douglas Fir flooring to match the existing timber step: use 21 mm thick 'Chaunceys engineered Douglas Fir flooring' with a Matt Oil finish - or equivalent. Chamfered the corner and fillet the edges - **to match the existing timber step.**

New timber step finished flush with STEP 4. This provides visitors with a greater foothold / going while walking onto and from the turnpike stair.

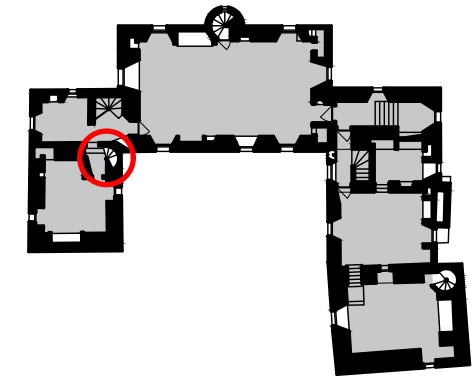
Existing timber step with a Douglas Fir finish and chamfered corners - **to be matched.**

ELEVATION OF NEW STEP
Scale 1:10 |

Notes:

NOTES

- RUBBLE MASONRY UNDER THE TURNPIKE STEPS AND THE STRAIGHT STEPS ARE MODERN ADDITIONS.
- MORTAR JOINTS ARE TO BE DRILLED BY HES STONE MASONS.
- HISTORIC FABRIC NOT TO BE DAMAGED IN ANY CIRCUMSTANCES.
- SIZES MUST NOT BE SCALED FROM THE DRAWING. ALL DIMENSIONS TO BE VERIFIED ON SITE PRIOR TO FABRICATION. ALL DIMENSIONS IN MILLIMETERS.
- THIS DRAWING MUST BE READ IN CONJUNCTION WITH THE OTHER DOCUMENTS IN RELATION TO THIS PROJECT.



FIRST FLOOR PLAN

Scale 1:500 | Location of Guardhouse Step

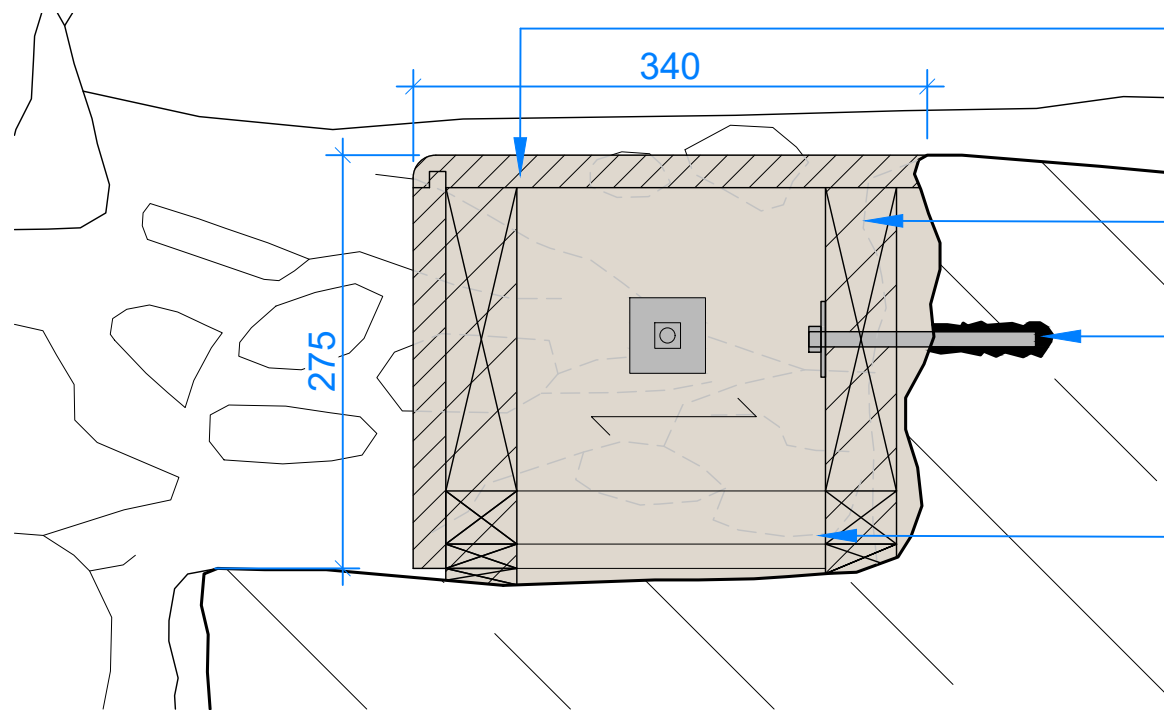
Revisions:

SMCP

MONUMENT	NEWARK CASTLE
PROJECT	NEW TIMBER STEP TO THE GATEHOUSE TURNPIKE STAIR - ELEVATION



PROJECT DRAWING NUMBER	122-20241008-003		
SCALE	1:10 @ A3	ARCHITECT	I. Lambie
DATE	October 2024	DRAWN BY	J. Pottage
ARCHIVE NUMBER	-		



Engineered Douglas Fir flooring to match the existing timber step: use 21 mm thick 'Chaunceys engineered Douglas Fir flooring' with a Matt Oil finish - or equivalent. Chamfered the corner and fillet the edges - **to match the existing timber step.**

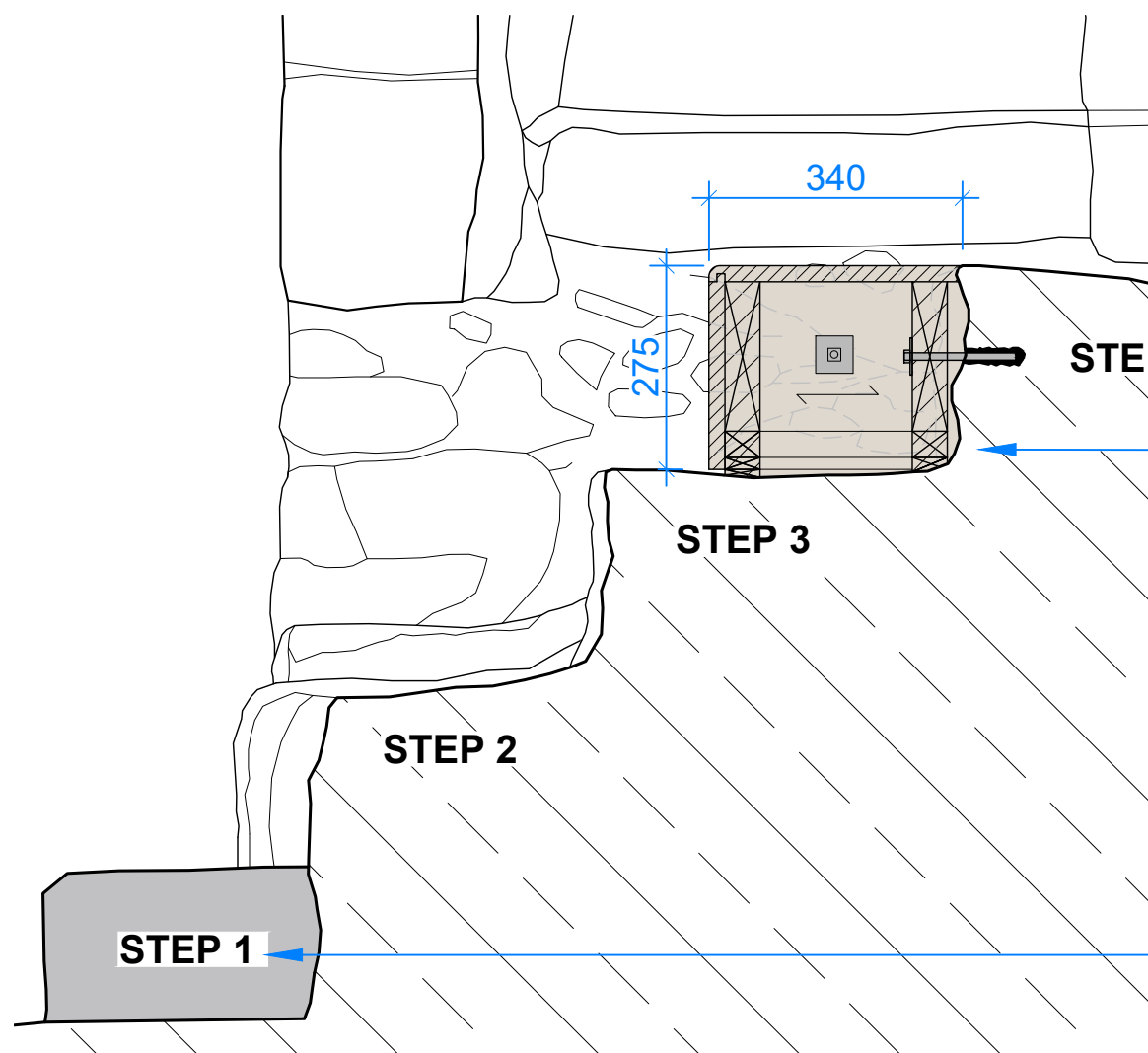
C16 47 mm x 200 mm timber joists skew nailed together to create a frame for the Douglas Fir finish and the threaded rod fixings into the masonry.

HES stone masons to pre-drill 2 holes into the joints of the modern rubble masonry steps and landing. Using a fine jet of water to flush out dirt, dust and debris from the holes. Fill the holes with NHL 5 or an epoxy resin and fix M10 x 150 mm grade 316 stainless steel threaded rods with M10 nut and 50 x 50 mm square washer.

47 mm x 35 mm timber packers screwed to the underside of the joists as required to level out the undulations of the rubble masonry.

DETAIL THROUGH NEW STEP

Scale 1:5 |



New timber step finished flush with STEP 4. This provides visitors with a greater foothold / going while walking onto and from the turnpike stair.

Existing timber step with a Douglas Fir finish and chamfered corners - **to be matched.**

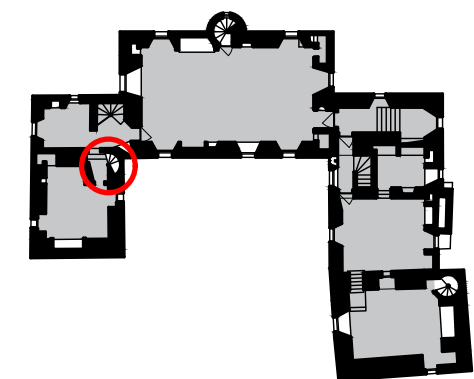
SECTION AA THROUGH NEW STEP

Scale 1:10 |

Notes:

NOTES

- RUBBLE MASONRY UNDER THE TURNPIKE STEPS AND THE STRAIGHT STEPS ARE MODERN ADDITIONS.
- MORTAR JOINTS ARE TO BE DRILLED BY HES STONE MASONS.
- HISTORIC FABRIC NOT TO BE DAMAGED IN ANY CIRCUMSTANCES.
- SIZES MUST NOT BE SCALED FROM THE DRAWING. ALL DIMENSIONS TO BE VERIFIED ON SITE PRIOR TO FABRICATION. ALL DIMENSIONS IN MILLIMETERS.
- THIS DRAWING MUST BE READ IN CONJUNCTION WITH THE OTHER DOCUMENTS IN RELATION TO THIS PROJECT.



FIRST FLOOR PLAN

Scale 1:500 | Location of Guardhouse Step

Revisions:

SMCP

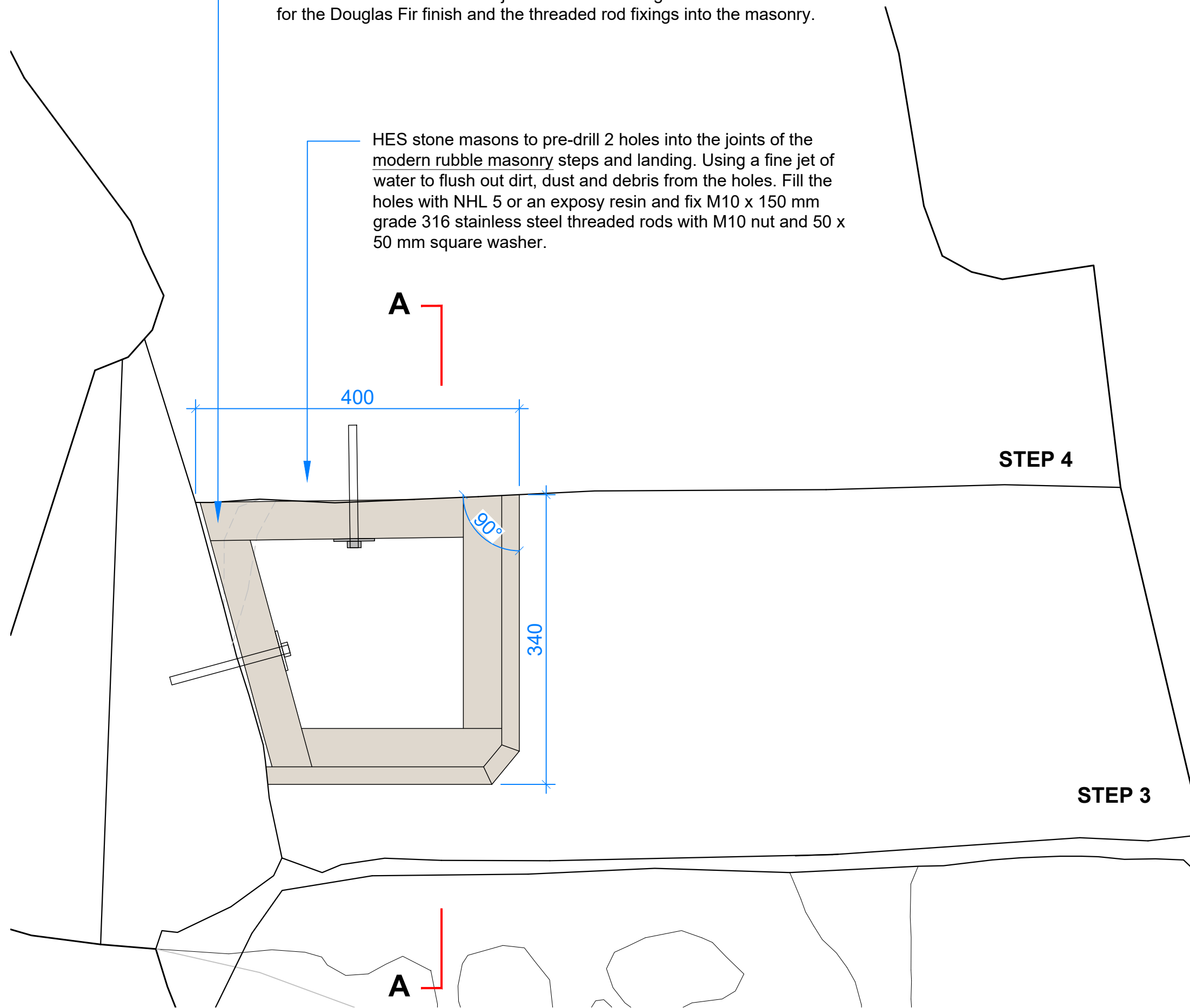
MONUMENT	NEWARK CASTLE
PROJECT	NEW TIMBER STEP TO THE GATEHOUSE TURNPIKE STAIR - SECTION



PROJECT DRAWING NUMBER	122-20241008-004		
SCALE	As Shown @ A3	ARCHITECT	I. Lambie
DATE	October 2024	DRAWN BY	J. Pottage
ARCHIVE NUMBER	-		

C16 47 mm x 200 mm timber joists skew nailed together to create a frame for the Douglas Fir finish and the threaded rod fixings into the masonry.

HES stone masons to pre-drill 2 holes into the joints of the modern rubble masonry steps and landing. Using a fine jet of water to flush out dirt, dust and debris from the holes. Fill the holes with NHL 5 or an epoxy resin and fix M10 x 150 mm grade 316 stainless steel threaded rods with M10 nut and 50 x 50 mm square washer.

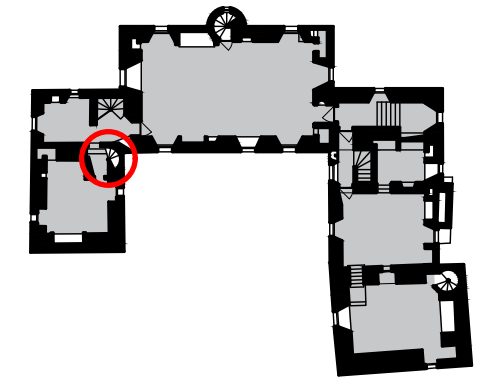


PLAN OF NEW STEP STRUCTURAL LAYOUT
Scale 1:5 |

Notes:

NOTES

- RUBBLE MASONRY UNDER THE TURNPIKE STEPS AND THE STRAIGHT STEPS ARE MODERN ADDITIONS.
- MORTAR JOINTS ARE TO BE DRILLED BY HES STONE MASONS.
- HISTORIC FABRIC NOT TO BE DAMAGED IN ANY CIRCUMSTANCES.
- SIZES MUST NOT BE SCALED FROM THE DRAWING. ALL DIMENSIONS TO BE VERIFIED ON SITE PRIOR TO FABRICATION. ALL DIMENSIONS IN MILLIMETERS.
- THIS DRAWING MUST BE READ IN CONJUNCTION WITH THE OTHER DOCUMENTS IN RELATION TO THIS PROJECT.



FIRST FLOOR PLAN

Scale 1:500 | Location of Guardhouse Step

Revisions:

SMCP

MONUMENT	NEWARK CASTLE
PROJECT	NEW TIMBER STEP TO THE GATEHOUSE TURNPIKE STAIR - STRUCTURAL PLAN



HISTORIC ENVIRONMENT SCOTLAND

ÀRAINNEACHD EACHDRAIDHEIL ALBA

PROJECT DRAWING NUMBER	122-20241008-005		
SCALE	1:5 @ A3	ARCHITECT	I. Lambie
DATE	October 2024	DRAWN BY	J. Pottage
ARCHIVE NUMBER	-		

Engineered Douglas Fir flooring to match the existing timber step: use 21 mm thick 'Chaunceys engineered Douglas Fir flooring' with a Matt Oil finish - or equivalent. Chamfered the corner and fillet the edges - **to match the existing timber step.**

New timber step finished flush with STEP 4. This provides visitors with a greater foothold / going while walking onto and from the turnpike stair.

A

400

340

90°

STEP 4

STEP 3

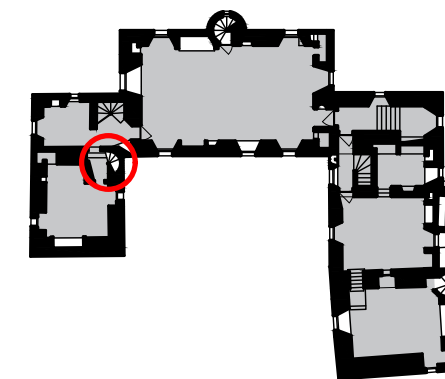
A

PLAN OF NEW STEP WITH FLOORBOARD FINISH
Scale 1:5 |

Notes:

NOTES

- RUBBLE MASONRY UNDER THE TURNPIKE STEPS AND THE STRAIGHT STEPS ARE MODERN ADDITIONS.
- MORTAR JOINTS ARE TO BE DRILLED BY HES STONE MASONS.
- HISTORIC FABRIC NOT TO BE DAMAGED IN ANY CIRCUMSTANCES.
- SIZES MUST NOT BE SCALED FROM THE DRAWING. ALL DIMENSIONS TO BE VERIFIED ON SITE PRIOR TO FABRICATION. ALL DIMENSIONS IN MILLIMETERS.
- THIS DRAWING MUST BE READ IN CONJUNCTION WITH THE OTHER DOCUMENTS IN RELATION TO THIS PROJECT.



FIRST FLOOR PLAN

Scale 1:500 | Location of Guardhouse Step

Revisions:

SMCP

MONUMENT	NEWARK CASTLE
PROJECT	NEW TIMBER STEP TO THE GATEHOUSE TURNPIKE STAIR - FINISHED PLAN



PROJECT DRAWING NUMBER	122-20241008-006		
SCALE	1:5 @ A3	ARCHITECT	I. Lambie
DATE	October 2024	DRAWN BY	J. Pottage
ARCHIVE NUMBER	-		



Visitors using the turnpike stairs are forced to transition onto the straight flight of steps without a landing.

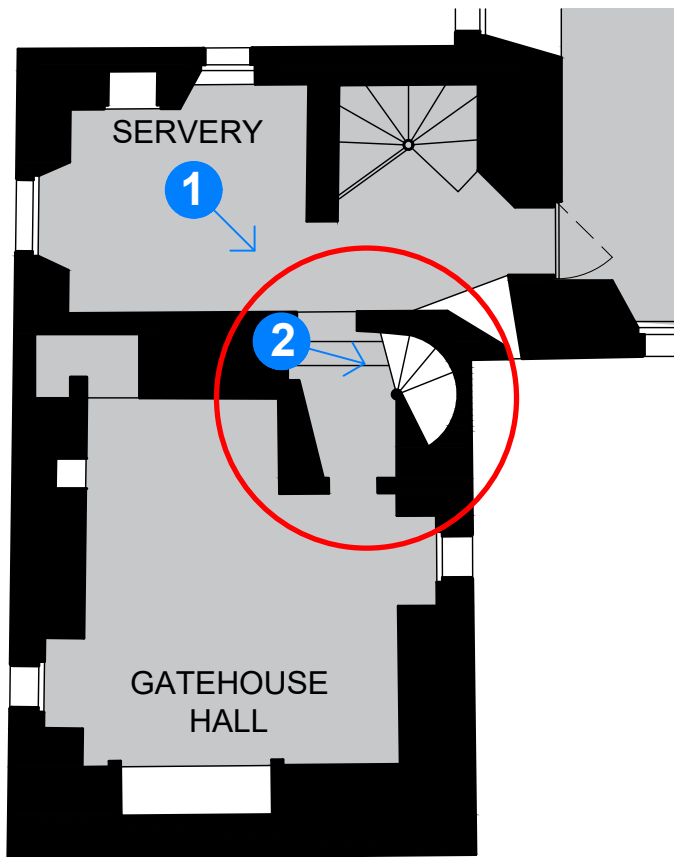
Existing timber step with a Douglas Fir finish and chamfered corners - **to be matched.**

PHOTOGRAPH 1



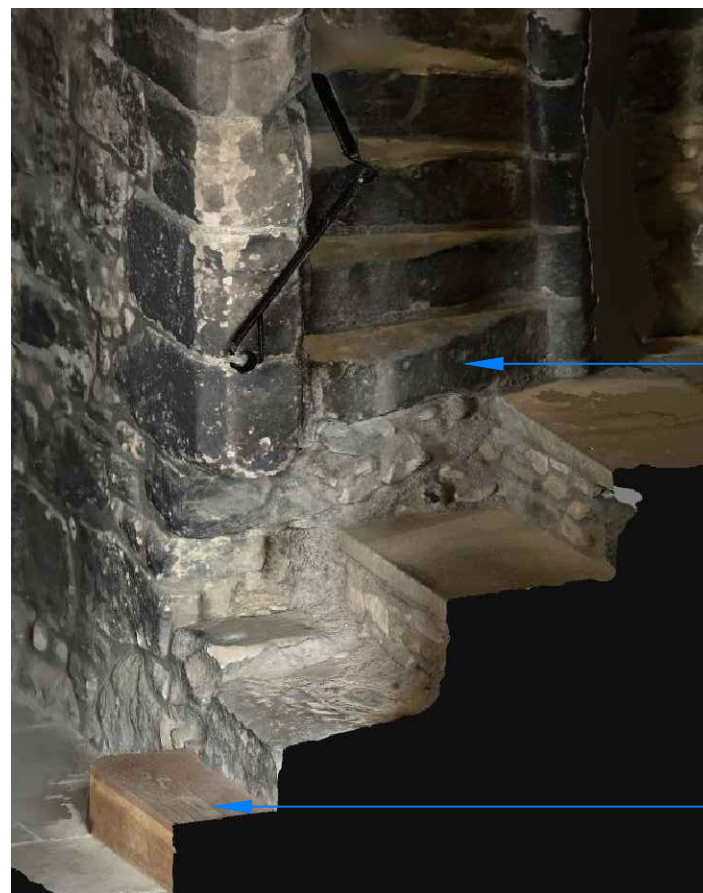
Visitors using the turnpike stairs are forced to transition onto the straight flight of steps without a landing.

PHOTOGRAPH 2



FIRST FLOOR PLAN

Scale 1:100 | Position of photographs shown in blue circles.



Visitors using the turnpike stairs are forced to transition onto the straight flight of steps without a landing.

Existing timber step with a Douglas Fir finish and chamfered corners - **to be matched.**

3D MODEL OF THE GATEHOUSE STAIRS

Notes:

NOTES

- RUBBLE MASONRY UNDER THE TURNPIKE STEPS AND THE STRAIGHT STEPS ARE MODERN ADDITIONS.
- MORTAR JOINTS ARE TO BE DRILLED BY HES STONE MASONS.
- HISTORIC FABRIC NOT TO BE DAMAGED IN ANY CIRCUMSTANCES.
- SIZES MUST NOT BE SCALED FROM THE DRAWING. ALL DIMENSIONS TO BE VERIFIED ON SITE PRIOR TO FABRICATION. ALL DIMENSIONS IN MILLIMETERS.
- THIS DRAWING MUST BE READ IN CONJUNCTION WITH THE OTHER DOCUMENTS IN RELATION TO THIS PROJECT.

Revisions:

SMCP

MONUMENT	NEWARK CASTLE
PROJECT	NEW TIMBER STEP TO THE GATEHOUSE TURNPIKE STAIR - PHOTOGRAPHS



PROJECT DRAWING NUMBER	122-20241008-006		
SCALE	1:5 @ A3	ARCHITECT	I. Lambie
DATE	October 2024	DRAWN BY	J. Pottage
ARCHIVE NUMBER	-		