



ADDITION

13662

The Ancient Monuments and Archaeological Areas Act 1979

Addition to the schedule of monuments

Historic Environment Scotland in exercise of the powers conferred on it by section 1(1) of the Ancient Monuments and Archaeological Areas Act 1979 hereby adds to the statutory schedule of monuments as set out below.

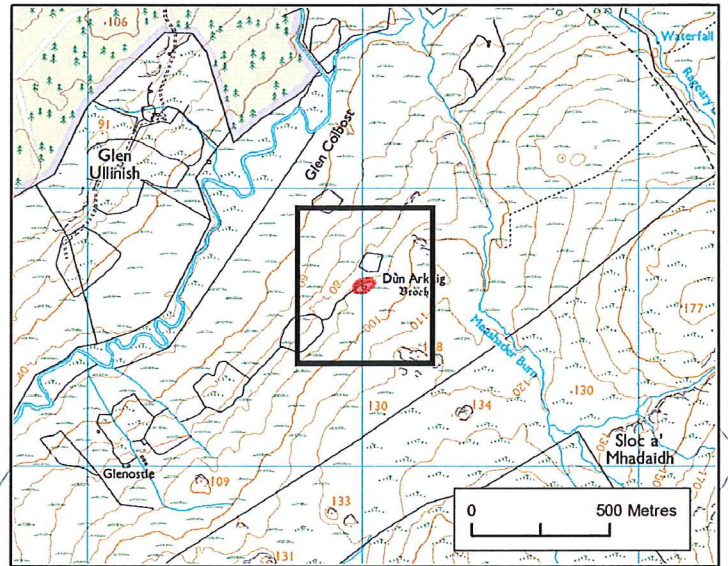
The monument known as **Dun Arkaig, broch** comprises a broch, a complex and substantial stone-built roundhouse dating to the Iron Age (between 600 BC and AD 400). The monument is visible as a roughly circular drystone-walled structure with the remains of an outer wall. It is constructed on a rocky outcrop on the south side of Glen Colbost at approximately 30m above sea level.

The scheduled area is irregular on plan to include the remains described above and an area around them within which evidence relating to the monument's construction, use and abandonment is expected to survive.

The monument, which lies in the Parish of Bracadale and the County of Inverness as shown in red on the plan annexed and executed as relative hereto.

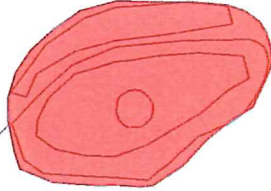
Dated: 6 / 2 / 17

This is the plan referred to in the entry in the Schedule affecting:
Dun Arkaig, broch



Dun Arkaig

Broch



Designation Reference: SM13662

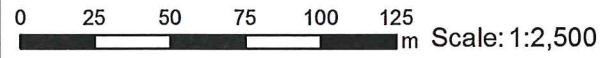
Dun Arkaig, broch

Parish: Bracadale

Scheduled Area 



Map Sheet:
NG34SE



Contains Historic Environment Scotland and Ordnance Survey Data © Historic Environment Scotland © Crown copyright and database rights 2016 Ordnance Survey [100057073]

Ordnance Survey Data
You are permitted to use this data solely to enable you to respond to, or interact with, the organisation that provided you with the data. You are not permitted to copy, sub-licence, distribute or sell any of this data to third parties in any form.