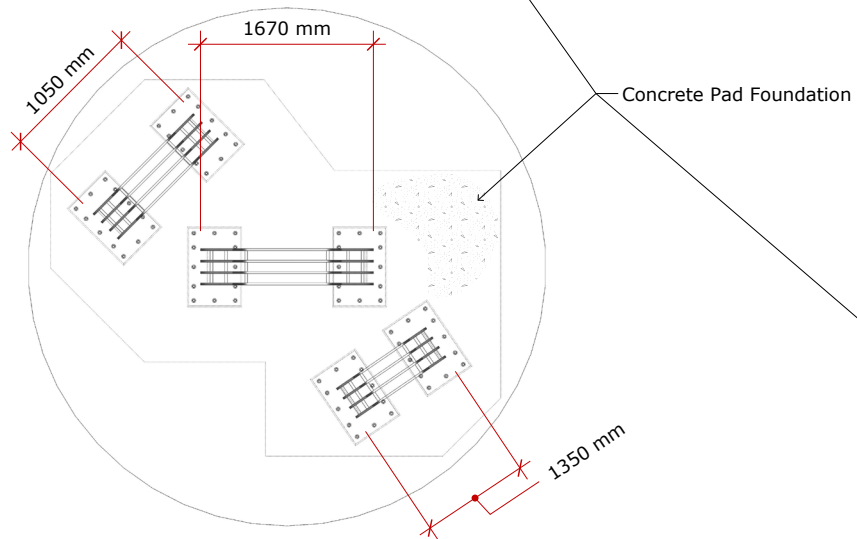
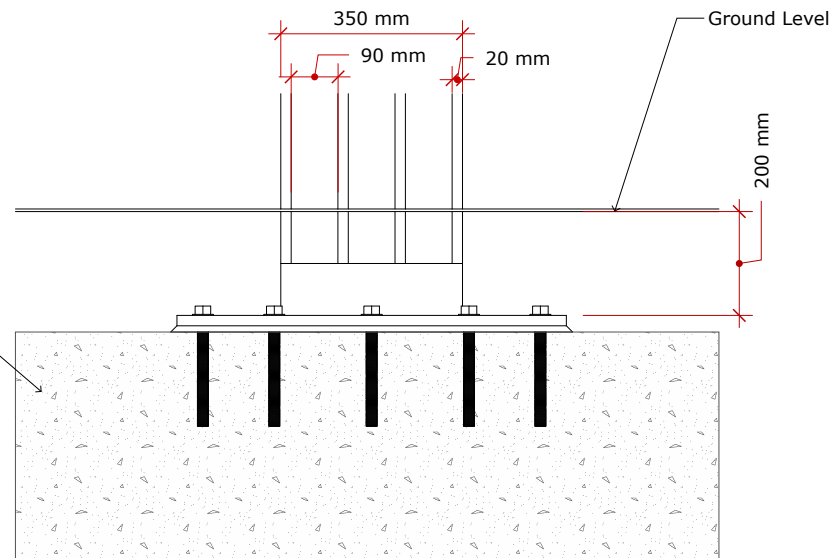


FRONT ELAVATION 1:50



PLAN



Proposed Foundation/material detail

GENERAL NOTES

1. Entire structure from Laser Cut 20mm Corten Steel plate
2. Preserve 90mm between contours for safety gap
3. Full Fillet welds throughout
4. Structural engineer to instruct on all aspects of fabrication



Former School
Crossroads School Workshops
Peaston,
EH355NL

CLIENT
Scottish Canals

PROJECT
Rosebank Bottle Concept

DRAWN BY
SL

ISSUE
September 1, 2016
RE-ISSUE

DESCRIPTION
First Stage Discussion Drawings
A3
Do not Scale this drawing
If in doubt of any information on this
drawing, contact this office

DRAWING NUMBER
SC001_BOTTLEART_CONCEPT1

PAGE.1



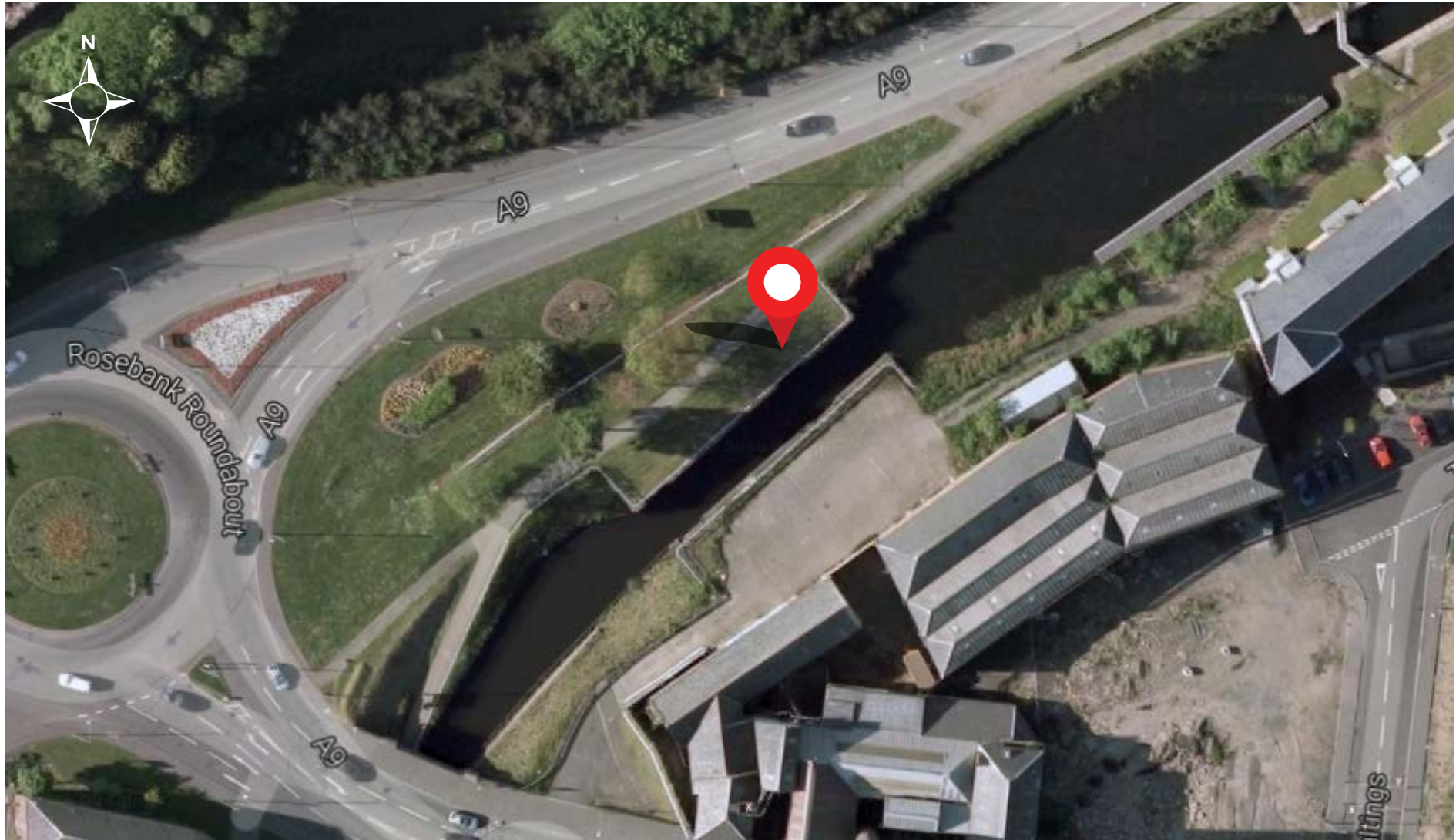
ROSEBANK DISTILLERY, WHISKEY BOTTLES

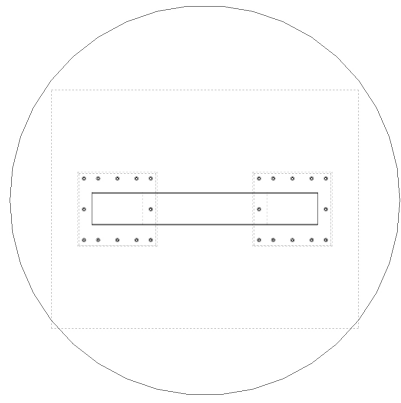




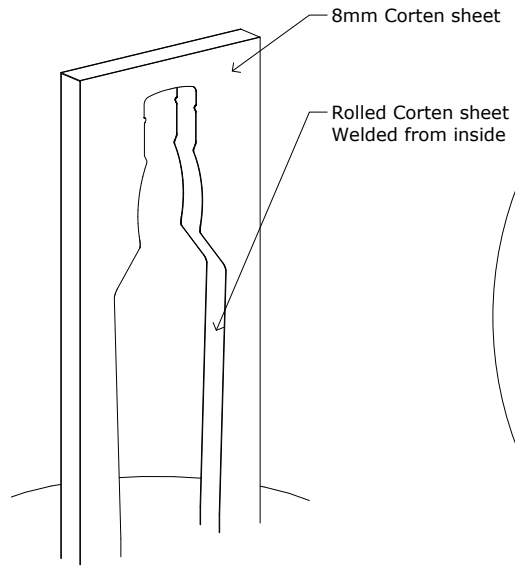
ROSEBANK DISTILLERY, WHISKEY BOTTLES

56°00'10.1"N 3°48'13.6"W



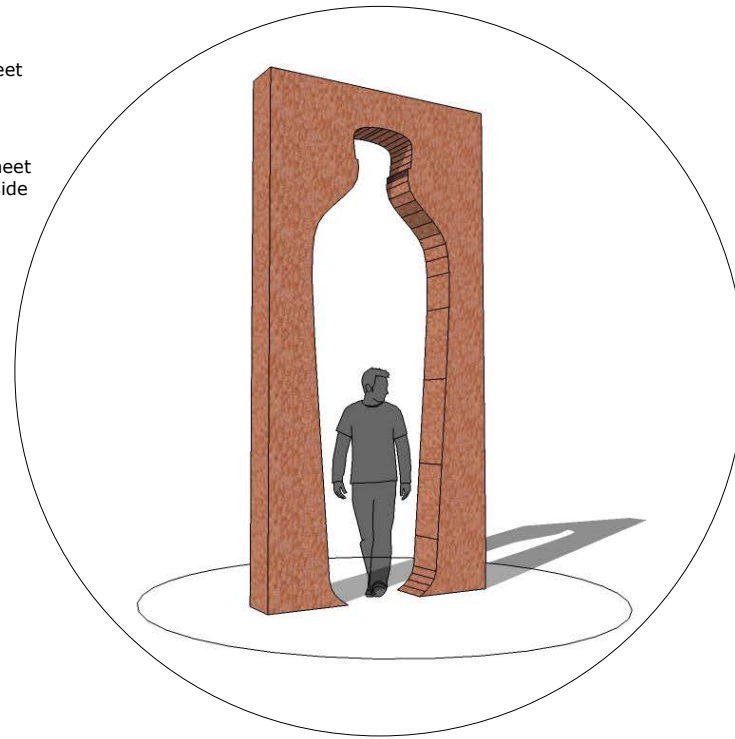


PLAN



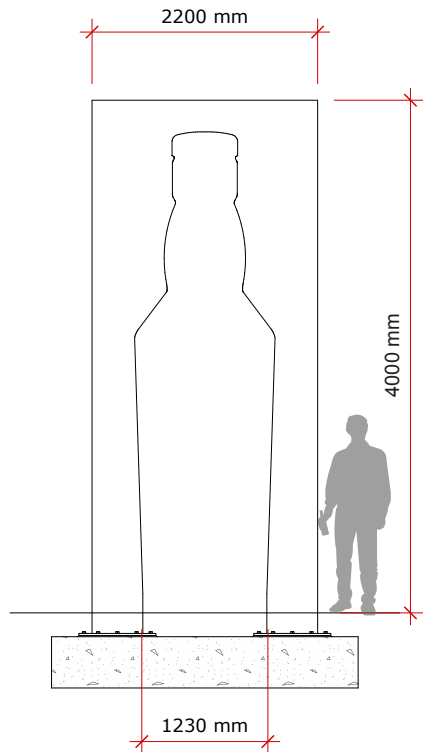
8mm Corten sheet

Rolled Corten sheet
Welded from inside

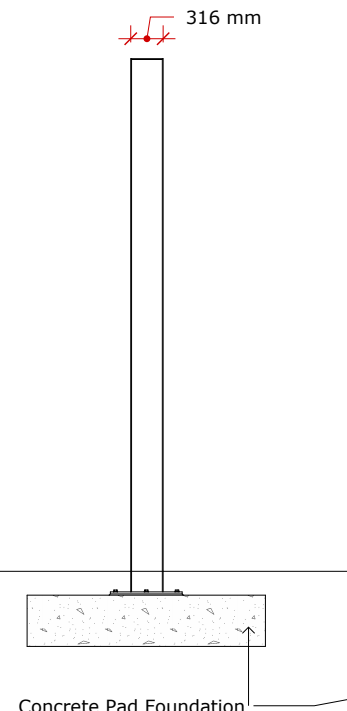


GENERAL NOTES

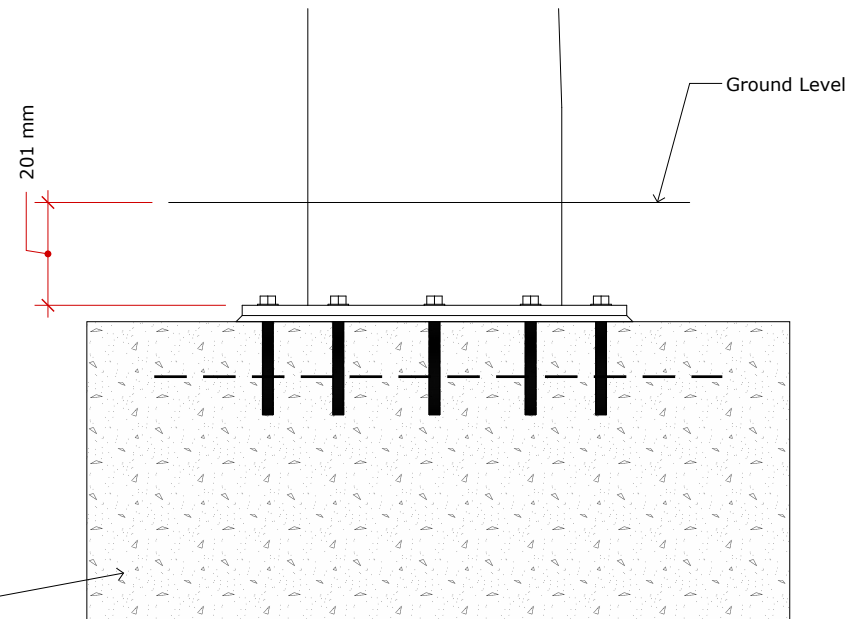
1. Entire structure from Laser Cut Corten Steel plate
2. Full Fillet welds throughout
3. Structural engineer to instruct on all aspects of fabrication



FRONT ELEVATION



SIDE ELEVATION



PROPOSED FOUNDATION DETAIL



Former School
Crossroads School Workshops
Peaston,
EH35SNL

CLIENT
Scottish Canals

PROJECT
Rosebank Bottle Concept

DRAWN BY
SL

ISSUE
September 2, 2016
RE-ISSUE

DESCRIPTION
First Stage Discussion Drawings
A3
Do not Scale this drawing
If in doubt of any information on this
drawing, contact this office

DRAWING NUMBER
SC001_BOTTLEART_CONCEPT2

PAGE.1



LOCK 5, VINEGAR BOTTLE





LOCK 5, VINEGAR BOTTLE

56°00'38.5"N 3°47'08.9"W

