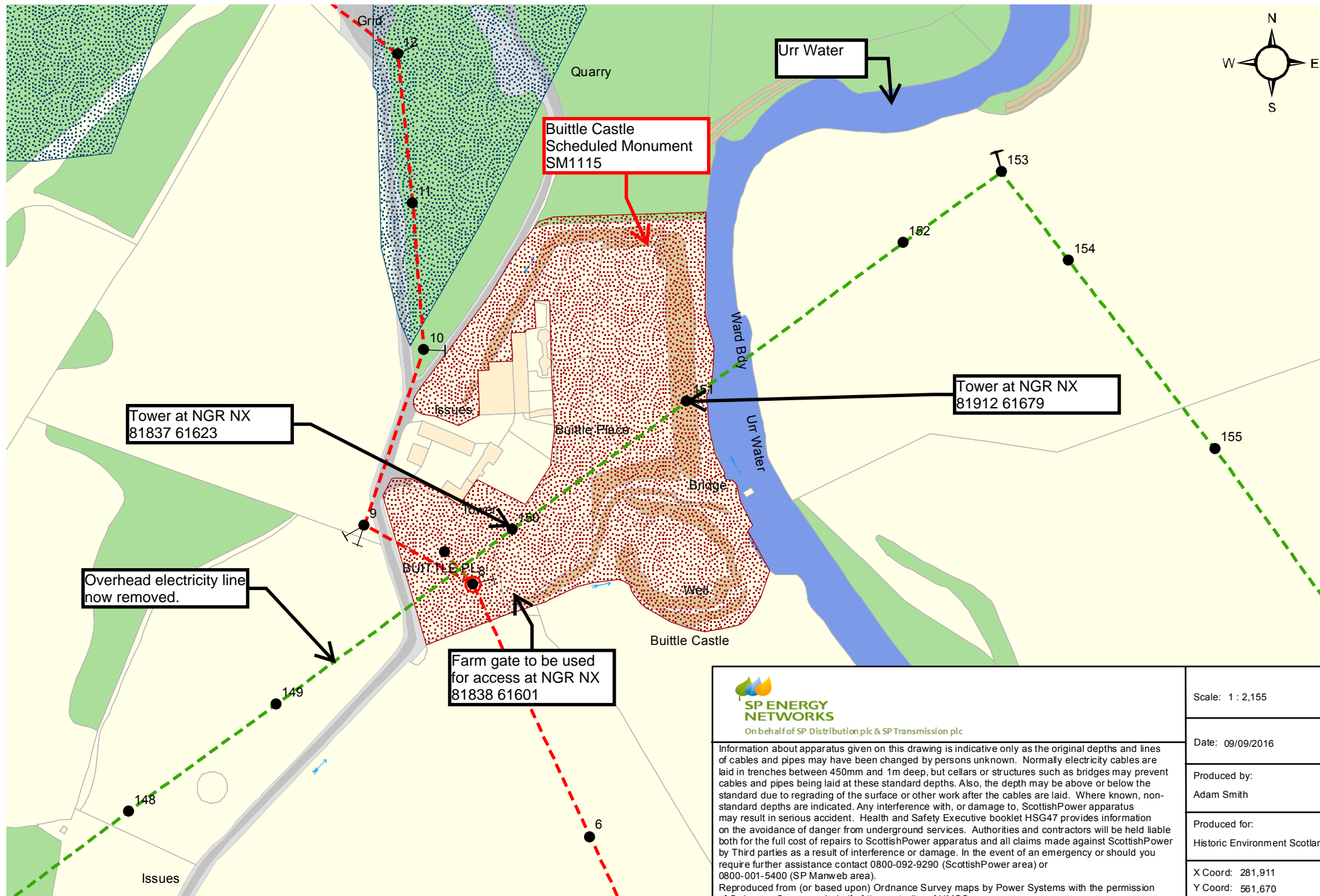



Buittle Castle Scheduled Monument



 <p>SP ENERGY NETWORKS On behalf of SP Distribution plc & SP Transmission plc</p> <p>Information about apparatus given on this drawing is indicative only as the original depths and lines of cables and pipes may have been changed by persons unknown. Normally electricity cables are laid in trenches between 450mm and 1m deep, but cellars or structures such as bridges may prevent cables and pipes being laid at these standard depths. Also, the depth may be above or below the standard due to regrading of the surface or other work after the cables are laid. Where known, non-standard depths are indicated. Any interference with, or damage to, ScottishPower apparatus may result in serious accident. Health and Safety Executive booklet HSG47 provides information on the avoidance of danger from underground services. Authorities and contractors will be held liable both for the full cost of repairs to ScottishPower apparatus and all claims made against ScottishPower by Third parties as a result of interference or damage. In the event of an emergency or should you require further assistance contact 0800-092-9290 (ScottishPower area) or 0800-001-5400 (SP Manweb area). Reproduced from (or based upon) Ordnance Survey maps by Power Systems with the permission of Ordnance Survey on behalf of the controller of HMSO.</p>	Scale: 1 : 2,155
	Date: 09/09/2016
	Produced by: Adam Smith
	Produced for: Historic Environment Scotland
	X Coord: 281,911 Y Coord: 561,670