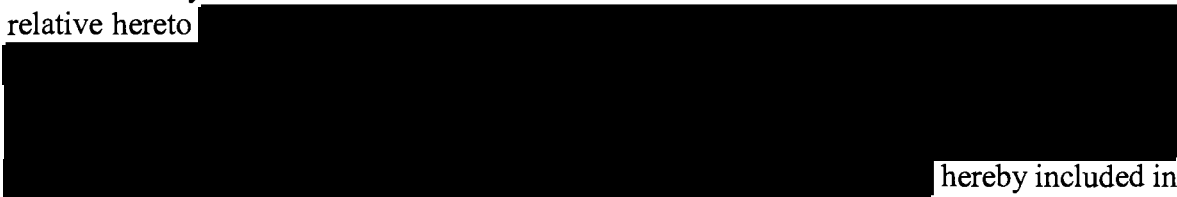


THE ANCIENT MONUMENTS AND ARCHAEOLOGICAL AREAS ACT 1979
ENTRY IN THE SCHEDULE OF MONUMENTS

11335

The monument known as Windyheads Hill, Gee station and camp, comprises the remains of a Second World War ground station for the Gee Navigation System and an associated accommodation camp, visible as upstanding ruins and hut platforms. It is located on an exposed broad summit, 231m O.D., in open moorland next to a radio station that is still in use. The area to be scheduled includes the remains described above and an area around them within which associated features might survive. It is irregular and has maximum dimensions of 805m N-S and 475m E-W. It excludes the radio station, observation post and temperature gauge that are in use, existing fences, modern structures that are in use, the upper 30cm of the surfaces of existing roads, laybys and tracks and the existing extent of ditches and known service trenches. The monument, which lies in the Parish of Aberdour and the County of Aberdeen as shown outlined in red on the Plan annexed and executed as relative hereto

 hereby included in the Schedule of Monuments appearing to the Scottish Ministers to be of national importance compiled and maintained by them under section 1(1) of the Ancient Monuments and Archaeological Areas Act 1979.

Subscribed by Malcolm Cooper, Chief Inspector with Historic Scotland, being an officer of the Scottish Ministers at Edinburgh on the 8 day of DECEMBER Two thousand and five, before this witness Victoria Ball, of Longmore House, Salisbury Place, Edinburgh.

 Chief Inspector

MFA10795

W
REGISTERS OF SCOTLAND
GENERAL REGISTER OF SASINES
COUNTY OF ABERDEEN
FICHE 50 FRAME 28
PRESENTED AND RECORDED ON

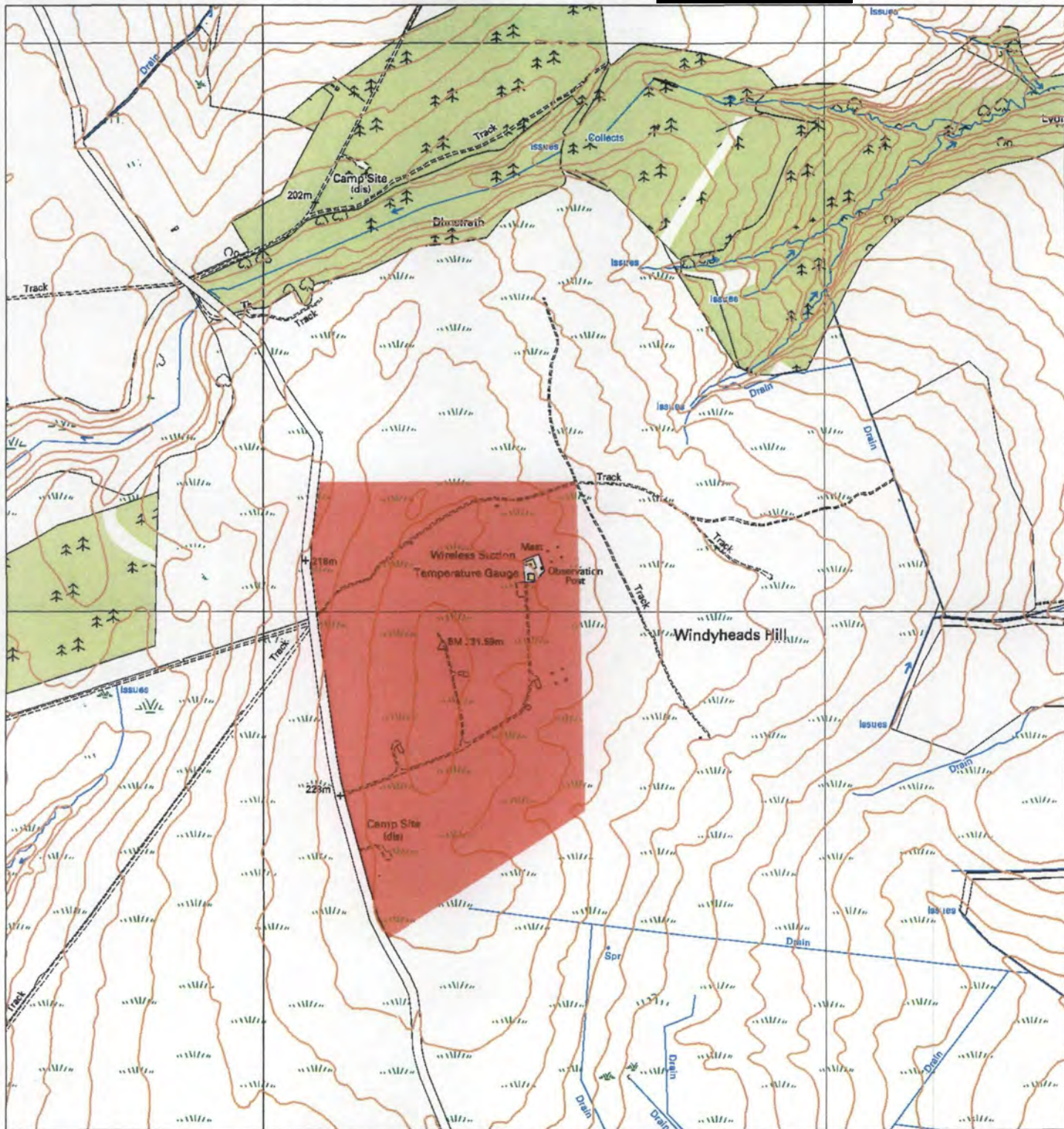
27 FEB 2006

ABN 06 50

14

This is the plan referred to in the entry in the Schedule affecting:
Windyheads Hill, Gee station and camp

dated: 12/12/2006 and is signed as relative thereto.



Index No: 11335
Windyheads Hill, Gee station and camp

Aberdour Parish



Representation of the
Scheduled Area

N
Mapsheets:
NJ86SE

Scale: 1:10,000

0 50 100 200 300 400 500 Metres

This map is reproduced from Ordnance Survey material with the permission of Ordnance Survey on behalf of the Controller of Her Majesty's Stationery Office © Crown copyright. Unauthorised reproduction infringes Crown copyright and may lead to prosecution or civil proceedings. Historic Scotland Licence No. 100017509 [2004].

901

1312
40
S

THE ANCIENT MONUMENTS AND
ARCHAEOLOGICAL AREAS ACT 1979

Entry in the Schedule of Monuments

2005

Re: The Monument known as
Windyheads Hill, Gee station and camp

in the Parish of Aberdour and
County of Aberdeen

99011155301

Search Sheet No: 33453

Historic Scotland
Longmore House
Salisbury Place
Edinburgh

MFA10695