

44 265/396
11 JUL 2001
YEAR 1487

THE ANCIENT MONUMENTS AND
ARCHAEOLOGICAL AREAS ACT 1979

Entry in the Schedule of Monuments

48

2001

Re: The Monument known as
Antonine Wall, Mumrills fort, Sandy Loan
to A905, Falkirk

in the Parish of Falkirk and
County of Stirling

Search Sheet No: 44

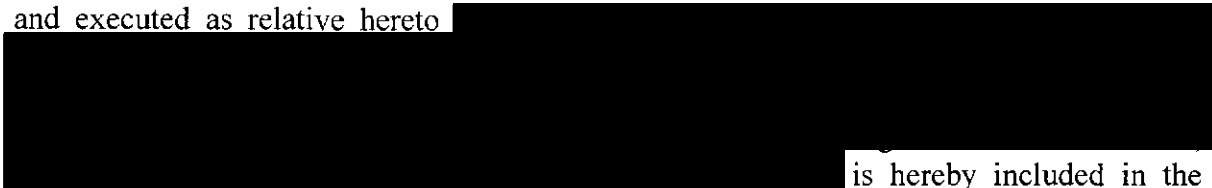
01/07/2001

Historic Scotland
Longmore House
Salisbury Place
Edinburgh

MFA00589

THE ANCIENT MONUMENTS AND ARCHAEOLOGICAL AREAS ACT 1979
ENTRY IN THE SCHEDULE OF MONUMENTS

The monument known as Antonine Wall, Mumrills fort, Sandy Loan to A905, Falkirk comprises a section of the Antonine Wall which runs from Sandy Loan in the west to the A905 in the east. The area to be scheduled includes the Antonine Wall rampart, berm, ditch and upcast mound, the fort and its associated ditches, the Military Way, the area to the east of the fort where archaeological features are known from aerial photography and excavation, and an area to the E and S where traces of activities associated with the construction and use of the monument may survive. The area measures a maximum of about 655m E-W by between 250m and 100m N-S. The monument, which lies in the Parish of Falkirk and the County of Stirling as shown outlined in red on the Plan annexed and executed as relative hereto

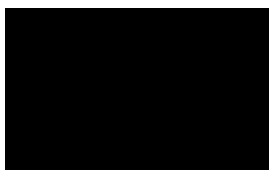


is hereby included in the Schedule of Monuments appearing to the Scottish Ministers to be of national importance compiled and maintained by them under section 1(1) of the Ancient Monuments and Archaeological Areas Act 1979.

Subscribed by Frank James Lawrie, Director of Heritage Policy with Historic Scotland, being an officer of the Scottish Ministers at Edinburgh on the 13th day of June Two thousand and one, before this witness Lesley Macdonald, of Longmore House, Salisbury Place, Edinburgh.



Witness



Director of Heritage Policy

Register on behalf of the Scottish Ministers in the Register of the County of Stirling.



An Officer of the Scottish Ministers

MFA00789

REGISTERS OF SCOTLAND
GENERAL REGISTER OF SAZINES
COUNTY OF STIRLING
FICHE 83 FRAME 40
PRESENTED & RECORDED ON

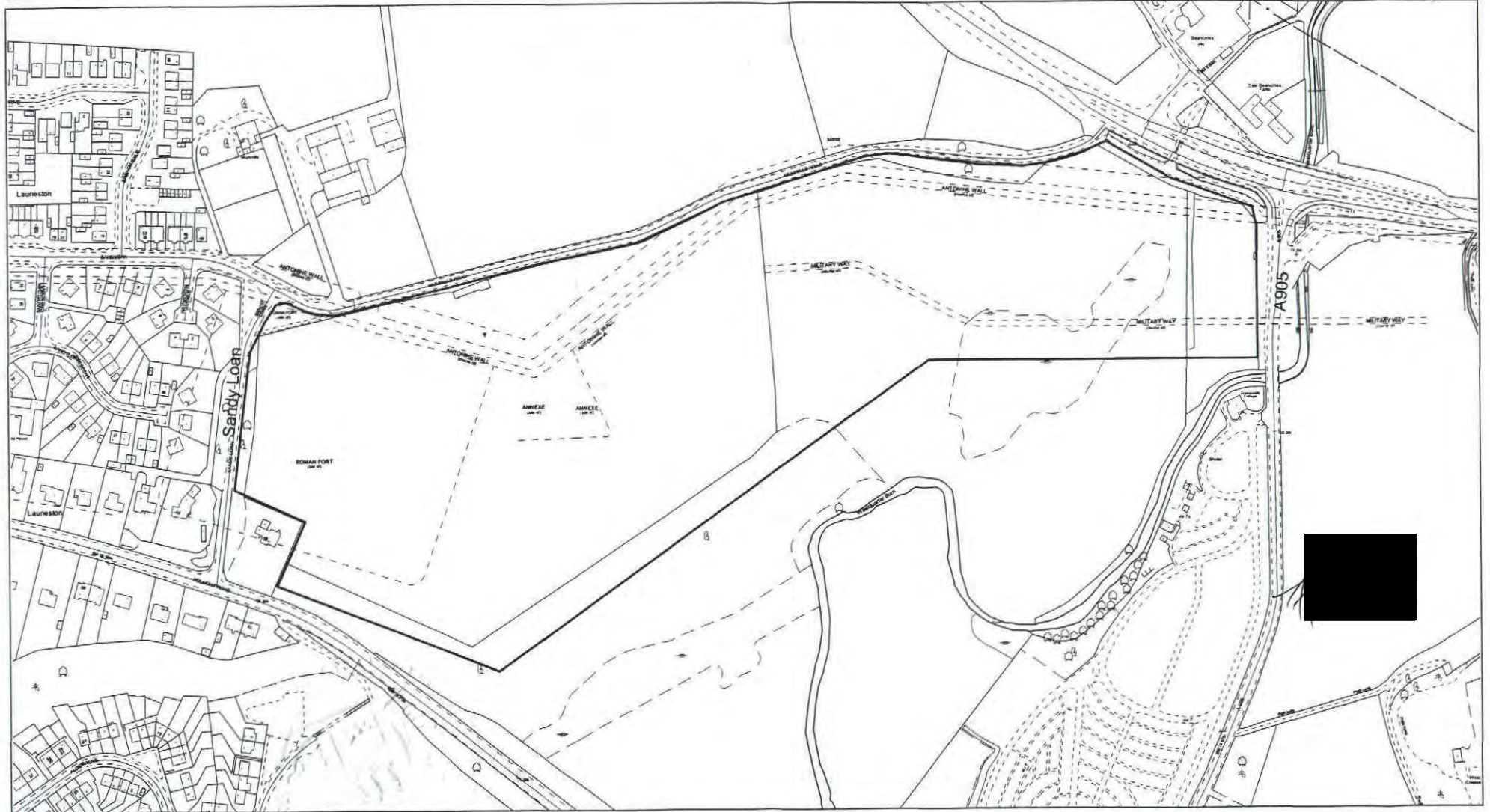
11 JUL 2001

STG 0 1

83

18

This is the plan referred to in the entry in the Schedule affecting Antonine Wall and Mumrills fort, Sandy Loan to A905, Falkirk, dated: 13 June 2001 and is signed as relative thereto.



Antonine Wall and Mumrills fort, Sandy Loan to A905, Falkirk

Falkirk Parish

Scheduled Area



Scale 1:2,500

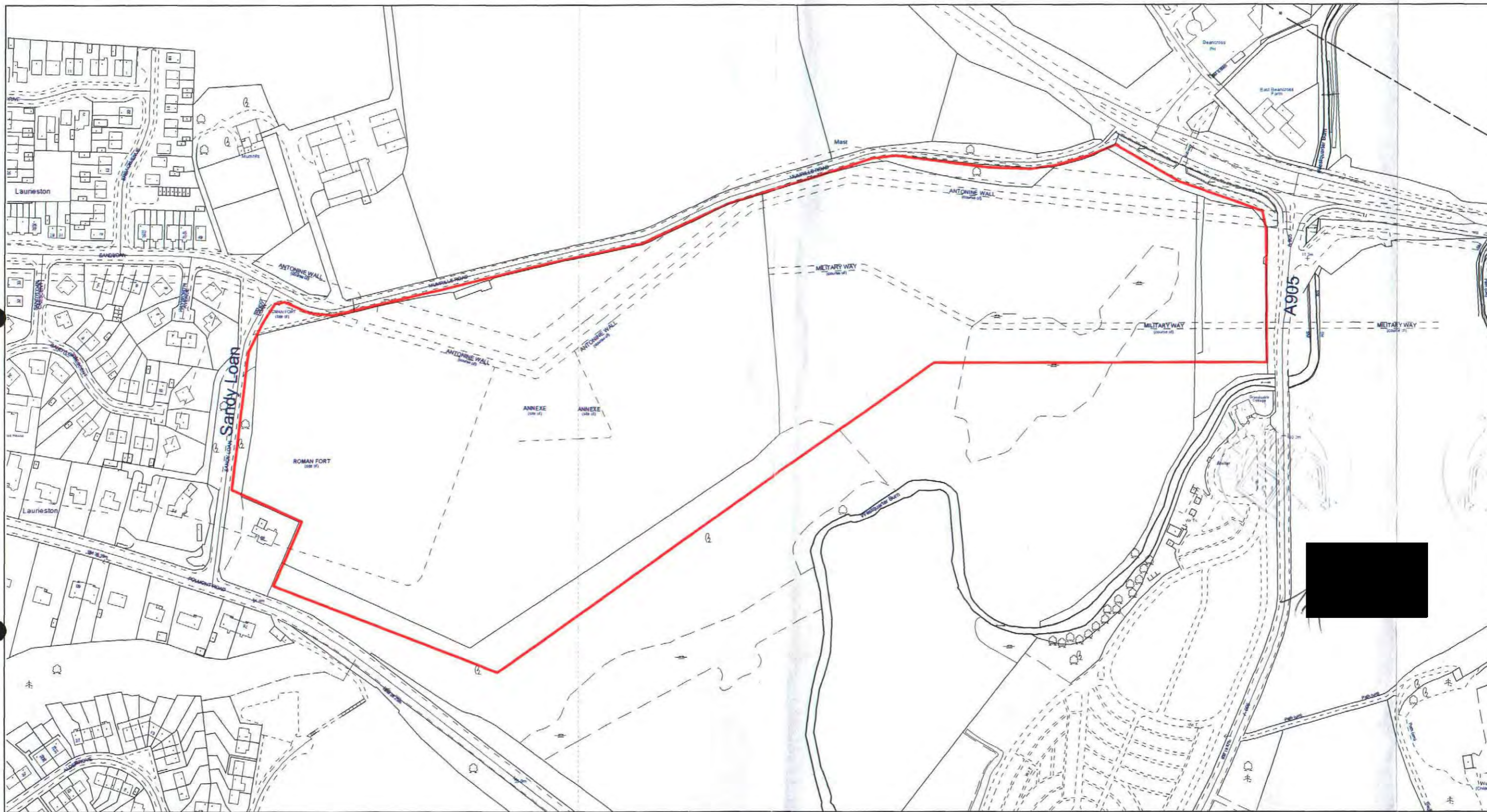
30 0 30 60 90 120 Meters

This map is reproduced from the OS map by Historic Scotland with the permission of The Controller of Her Majesty's Stationery Office. © Crown copyright. Unauthorised reproduction infringes Crown Copyright and may lead to prosecution or civil proceedings. Licence No. GD 03135G0014.

MapSheet: NS97NW

19X

This is the plan referred to in the entry in the Schedule affecting
Antonine Wall and Mumrills fort, Sandy Loan to A905, Falkirk,
dated: 13 June 2001 and is signed as relative thereto.



Antonine Wall and Mumrills fort, Sandy Loan to A905, Falkirk

Falkirk Parish

Scheduled Area



MapSheet: NS97NW

Scale 1:2,500

30 0 30 60 90 120 Meters

This map is reproduced from the OS map by Historic Scotland
with the permission of The Controller of Her Majesty's Stationery
Office, © Crown copyright. Unauthorised reproduction infringes
Crown Copyright and may lead to prosecution or civil proceedings.
Licence No. GD 03135G0014.