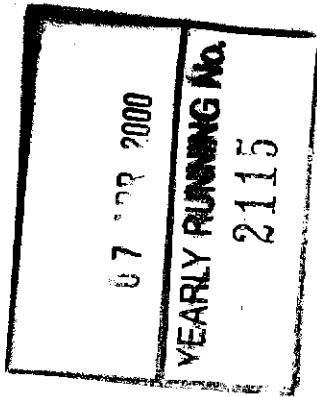


AYR

THE ANCIENT MONUMENTS AND
ARCHAEOLOGICAL AREAS ACT 1979



Entry in the Schedule of Monuments

33062
125845
130607

39 35

1999

Re: The Monument known as
Waterside, miners' villages and mineral
railways N of

in the Parish of Dalmellington and
County of Ayr

Search Sheet No: 33062 (68 S of S)
125845
130607

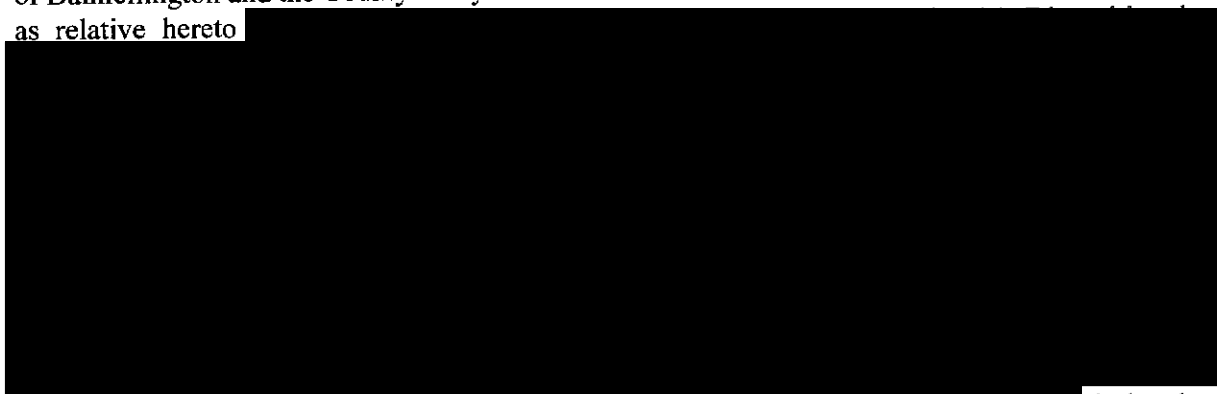
Office of the Solicitor
to the
Scottish Executive
Victoria Quay
Edinburgh

MFA00483

7863

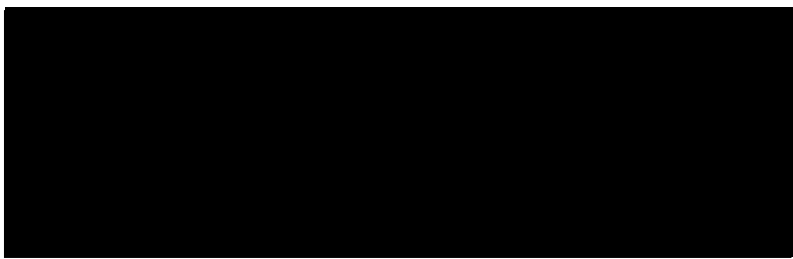
THE ANCIENT MONUMENTS AND ARCHAEOLOGICAL AREAS ACT 1979
ENTRY IN THE SCHEDULE OF MONUMENTS

The monument known as Waterside, miners' villages and mineral railways N of comprises the remains of the former mining villages of Benquhat, Corbie Craigs and Lethanhill, together with a network of tracks marking the site of former mineral railways, bings marking the site of former ironstone pits and adjacent shafts, all associated with the Dalmellington Ironworks. The area to be scheduled is very irregular on plan. The maximum distance between extremities is 2Km N-S and 4Km E-W but only a small proportion of the land within these extremities is to be scheduled. The width of the scheduled area along the grass-covered tracks marking the lines of the former mineral railways is a uniform 10m, with expansions at the locations of the villages and tips. A small detached area is to be scheduled at Corbie Craigs village. The monument, which lies in the Parish of Dalmellington and the County of Ayr as shown outlined in red on the Plan annexed and executed as relative hereto



is hereby included in the Schedule of Monuments appearing to the Scottish Ministers to be of national importance compiled and maintained by them under section 1(1) of the Ancient Monuments and Archaeological Areas Act 1979.

Subscribed by Frank James Lawrie, Director of Heritage Policy with Historic Scotland, being an officer of the Scottish Ministers at Edinburgh on the 15th day of November Nineteen hundred and ninety-nine, before this witness Lesley Macdonald, of Longmore House, Salisbury Place, Edinburgh.



Director of Heritage Policy

Register on behalf of the Scottish Ministers in the Register of the County of Ayr.



Solicitor, Edinburgh, Agent

MFA00683

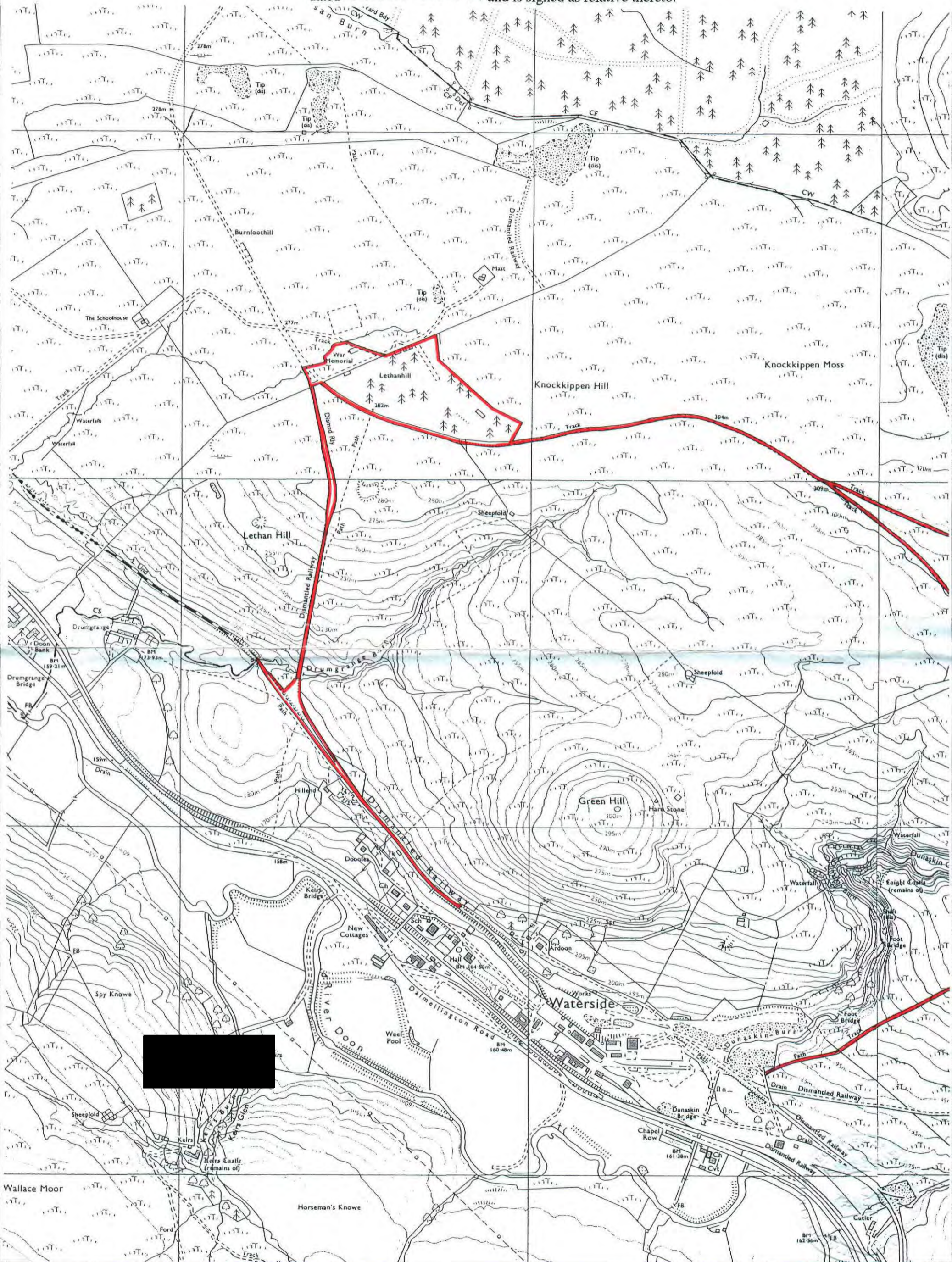
REGISTERS OF SCOTLAND
GENERAL REGISTER OF SASINES
COUNTY OF AYR
FICHE 95 FRAME 14
PRESENTED & RECORDED ON

AYR 00 95

-7 APR 2000

14

This is the plan referred to in the entry in the Schedule affecting Waterside, miners' villages and mineral railways N of, dated 15 November 1999 and is signed as relative thereto.



Waterside, miners' villages and mineral railways N of
Dalmellington Parish

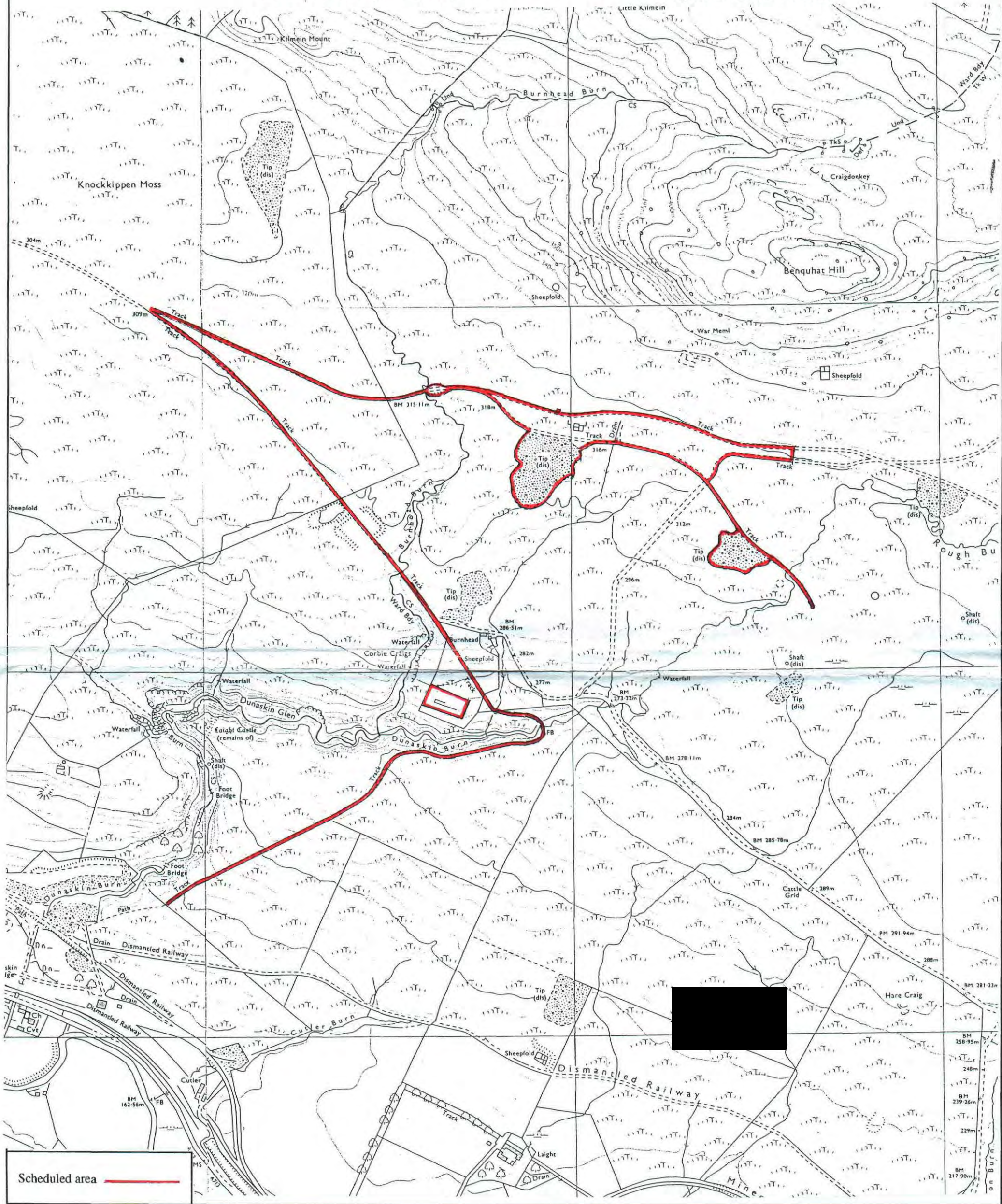
↑
N
 Sheets: NS40NW, NE
 NS41SW, SE

Scale 1:10,000
 100 0 100 200 300 Metres
 500 0 500 1000 Feet
 © Crown copyright reserved

Map 1 of 2

Scheduled area ———
 The Stationery Office Cartographic Centre J20502

This is the plan referred to in the entry in the Schedule affecting Waterside, miners' villages and mineral railways N of, dated 15 November 1999 and is signed as relative thereto.



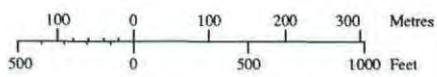
Waterside, miners' villages and mineral railways N of

Dalmellington Parish
Map 2 of 2



Sheets: NS40NW, NS40NE,
NS41SW, NS41SE.

Scale 1:10,000



© Crown copyright reserved