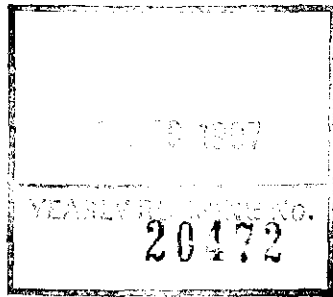


ANG



THE ANCIENT MONUMENTS AND
ARCHAEOLOGICAL AREAS ACT 1979

Entry in the Schedule of Monuments

1997

Re: The Monument known as
Craigiemeg, settlement 250m N of

in the Parish of Cortachy and Clova and
County of Angus

~~128~~

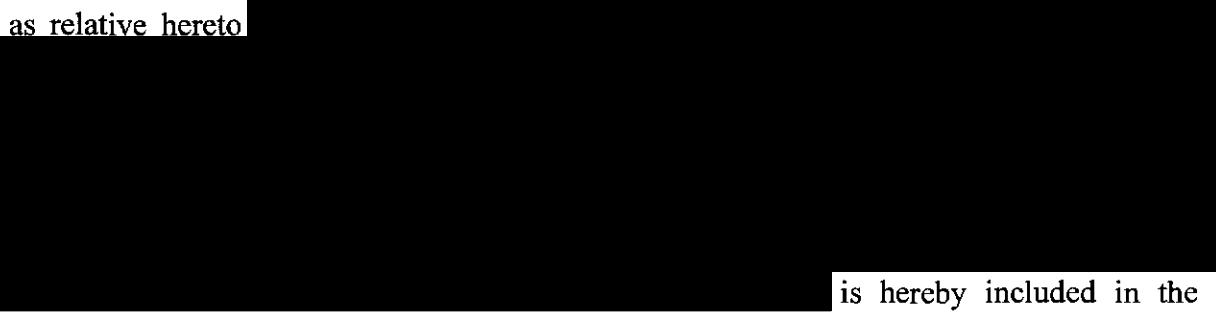
Search Sheet No: 3502

123

Solicitor
to the
Secretary of State
for Scotland
Victoria Quay
Edinburgh

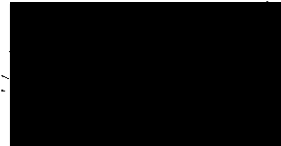
THE ANCIENT MONUMENTS AND ARCHAEOLOGICAL AREAS ACT 1979
ENTRY IN THE SCHEDULE OF MONUMENTS

The monument known as Craigiemeg, settlement 250m N of comprises an unenclosed settlement of prehistoric date and possibly early medieval date, comprising the remains of a series of round and rectangular houses, platforms and field banks. The area to be scheduled encompasses the remains and areas around and between them in which traces of associated activity may be expected to survive. It is irregular in shape with maximum dimensions of 460m E-W by 150m. The E boundary is defined by a modern track not marked on the present 1:10,000 map coverage. The monument, which lies in the Parish of Cortachy and Clova and the County of Angus as shown outlined in red on the Plan annexed and executed as relative hereto



is hereby included in the Schedule of Monuments appearing to the Secretary of State for Scotland to be of national importance compiled and maintained by him under section 1(1) of the Ancient Monuments and Archaeological Areas Act 1979.

Given under the Seal of the Secretary of State for Scotland.



Assistant Secretary

Date 30 September 1997

Historic Scotland
Longmore House
Salisbury Place
EDINBURGH
EH9 1SH

Register on behalf of the Secretary of State for Scotland in the Register of the County of Angus.



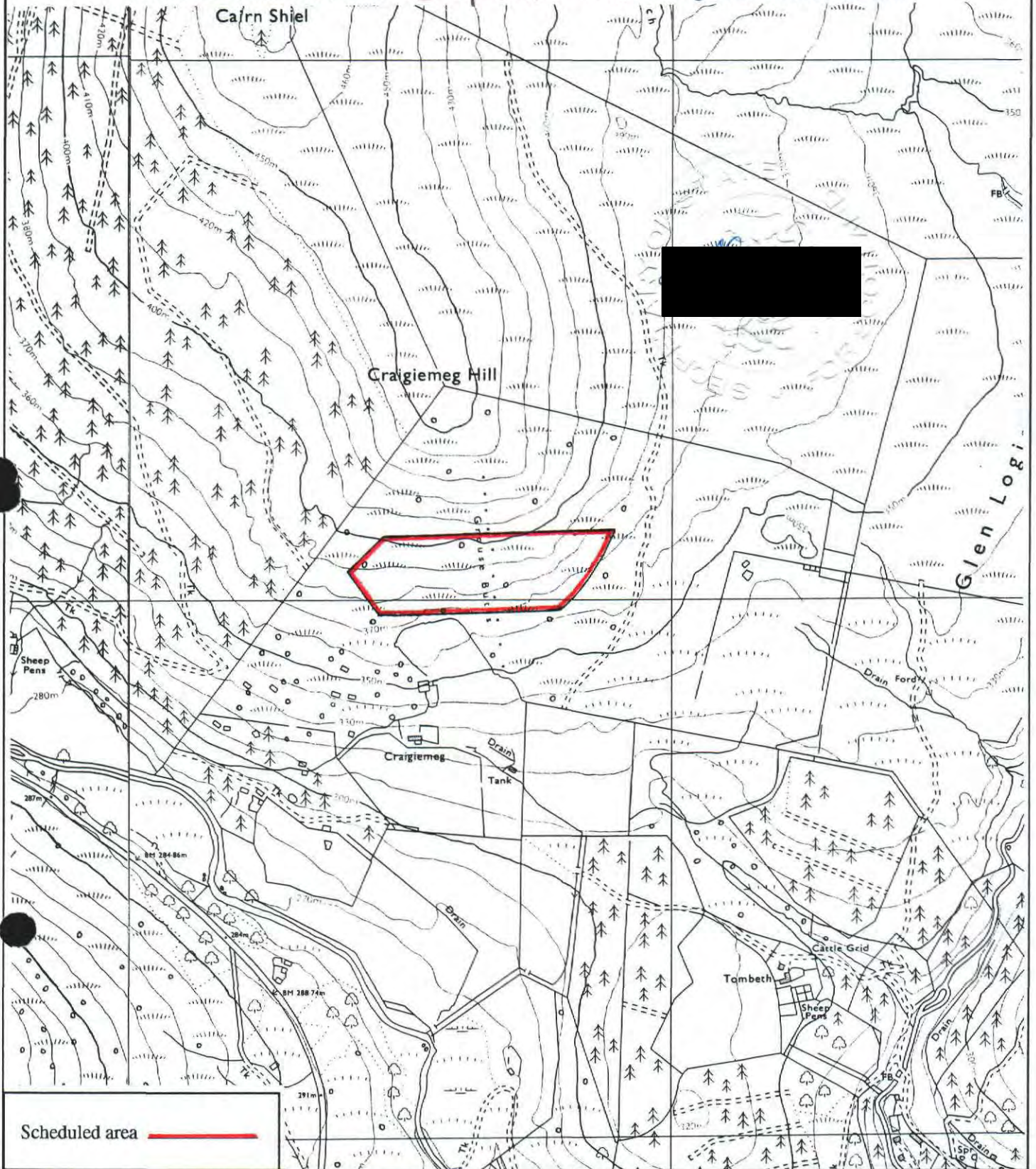
Solicitor, Edinburgh, Agent

11/97 1232

MFA01774

REGISTERS OF SCOTLAND
GENERAL REGISTER OF SASINES
COUNTY OF ANGUS
FICHE 1252 FRAME 24 - 8 DEC 1997
PRESENTED & RECORDED ON

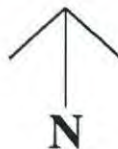
This is the plan referred to in the entry in the Schedule affecting Craigiemeg, settlement 250m N of, dated 30 September 1992 and is signed as relative thereto.



Scheduled area ———

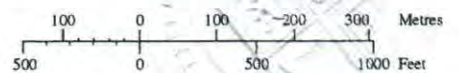
**Craigiemeg, settlement
250m N of**

Cortachy and Clova Parish



Sheet: NO36NW

Scale 1:10,000



© Crown copyright reserved.

ANG 97 1252