

THE ANCIENT MONUMENTS AND
ARCHAEOLOGICAL AREAS ACT 1979

	-7 MAY 1999
	YEARLY RUNNING NO. 1169

Entry in the Schedule of Monuments

2 1999

Re: The Monument known as
Fulton Tower

in the Parish of Bedrule and
County of Roxburgh

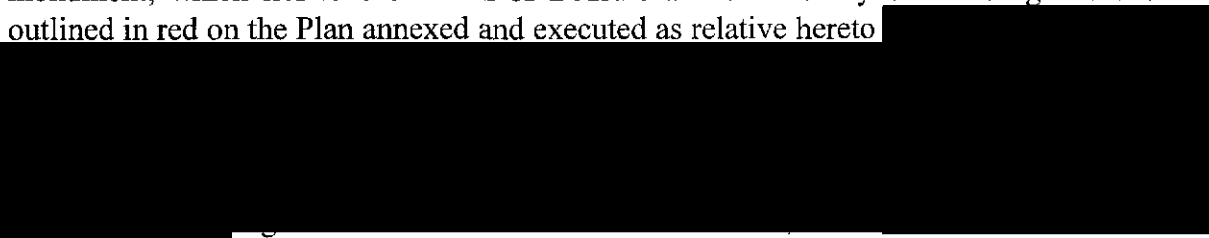
Search Sheet No: 1279

Solicitor
to the
Secretary of State
for Scotland
Victoria Quay
Edinburgh

MFA08201

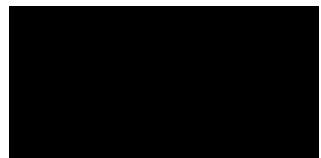
THE ANCIENT MONUMENTS AND ARCHAEOLOGICAL AREAS ACT 1979
ENTRY IN THE SCHEDULE OF MONUMENTS

The monument known as Fulton Tower comprises the remains of an oblong tower house of 16th century date, some 6.9m NW-SE by about 9.3m NE-SW with a circular stair-tower projecting from the E angle. It lies to the E of the road which flanks the Rule Water, some 250m S of Fulton Farm. The area to be scheduled encompasses the visible remains and an area around them in which traces of associated activity may be expected to survive. It is rectangular with maximum dimensions of 35m NE-SW by 25m transversely. The monument, which lies in the Parish of Bedrule and the County of Roxburgh as shown outlined in red on the Plan annexed and executed as relative hereto



is hereby included in the Schedule of Monuments appearing to the Secretary of State for Scotland to be of national importance compiled and maintained by him under section 1(1) of the Ancient Monuments and Archaeological Areas Act 1979.

Given under the Seal of the Secretary of State for Scotland.



Assistant Secretary
Date 13 January 1999

Historic Scotland
Longmore House
Salisbury Place
EDINBURGH
EH9 1SH

Register on behalf of the Secretary of State for Scotland in the Register of the County of Roxburgh.



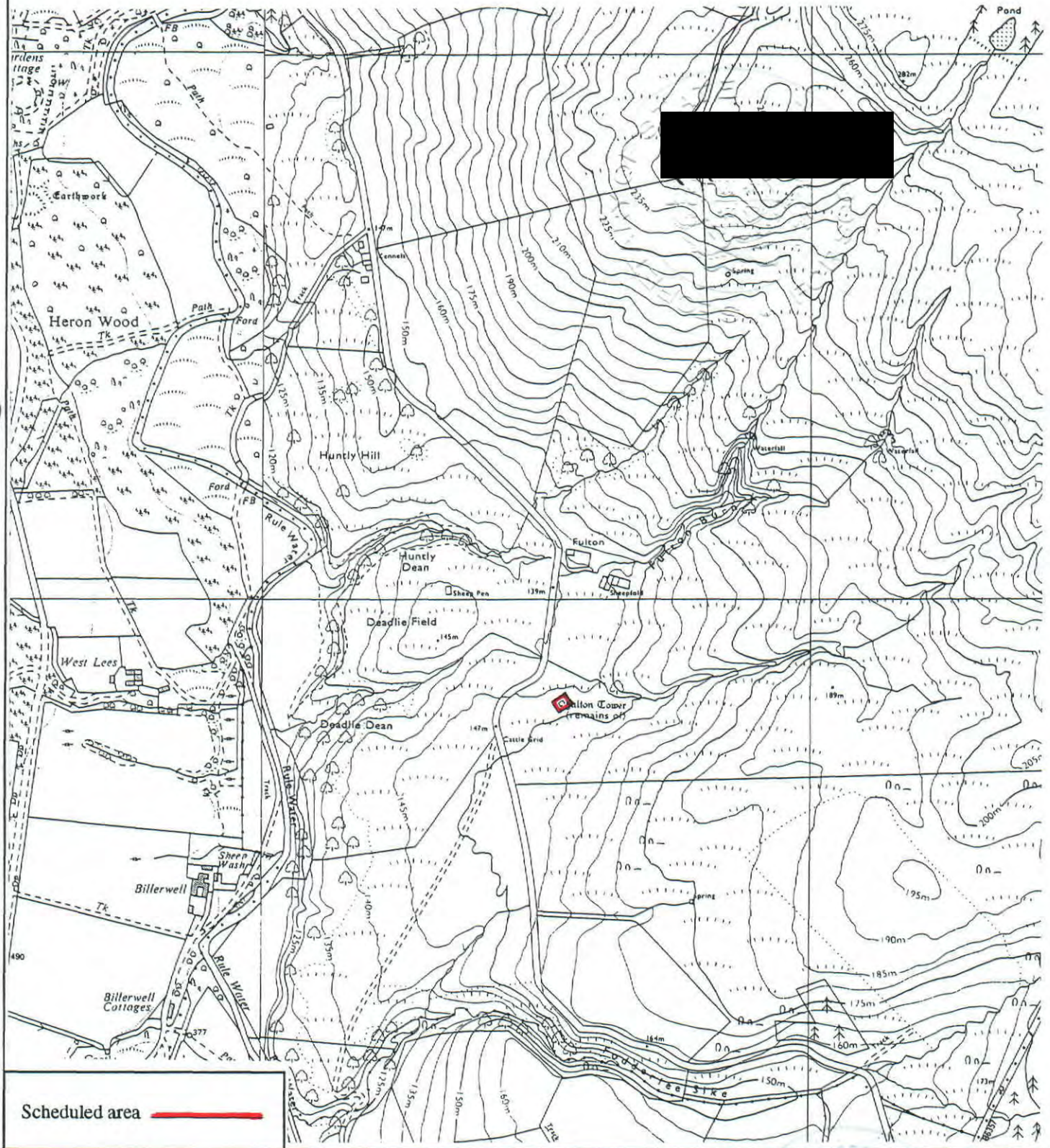
Solicitor, Edinburgh, Agent

MFA00102

ROX 99 - 81

REGISTERS OF SCOTLAND
GENERAL REGISTER OF SASINES
COUNTY OF ROXBURGH
FICHE 81 FRAME 2
PRESENTED & RECORDED ON 7 MAY 1999

This is the plan referred to in the entry in the Schedule affecting Fulton Tower, dated 13 January 1999 and is signed as relative thereto.



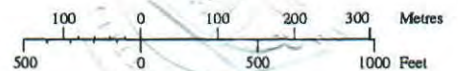
Scheduled area ———

Fulton Tower
Bedrule Parish



Sheet: NT61NW

Scale 1:10,000



© Crown copyright reserved