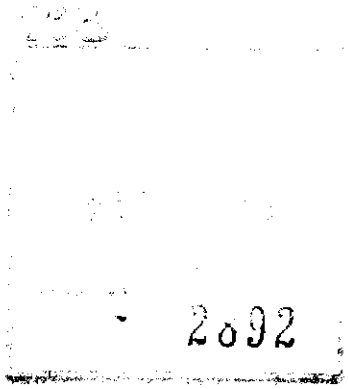


PEH

THE ANCIENT MONUMENTS AND
ARCHAEOLOGICAL AREAS ACT 1979



Entry in the Schedule of Monuments

1998

Re: The Monument known as
Hallhole, enclosures and trackway NNE of,

in the Parish of Caputh and
County of Perth

11

Search Sheet No: 233

775 0816

Solicitor
to the
Secretary of State
for Scotland
Victoria Quay
Edinburgh

THE ANCIENT MONUMENTS AND ARCHAEOLOGICAL AREAS ACT 1979
ENTRY IN THE SCHEDULE OF MONUMENTS

The monument known as Hallhole, enclosure and trackways NNE of comprises an enclosed settlement of prehistoric date, visible as a series of cropmarks on oblique aerial photographs. The area to be scheduled comprises the enclosures and an area around them within which related material may be expected to be found. This area includes the part of the linear cropmarks closed to the enclosures, but does not include their entire length. The scheduled area is irregular in shape with maximum dimensions of 220m between its N and S-most points and 200m between its E and W-most points. The monument, which lies in the Parish of Caputh and the County of Perth as shown outlined in red on the Plan annexed and executed as relative hereto



is hereby included in the Schedule of Monuments appearing to the Secretary of State for Scotland to be of national importance compiled and maintained by him under section 1(1) of the Ancient Monuments and Archaeological Areas Act 1979.


Given under the Seal of the Secretary of State for Scotland.



Assistant Secretary
Date 17 December 1998

Historic Scotland
Longmore House
Salisbury Place
EDINBURGH
EH9 1SH

Register on behalf of the Secretary of State for Scotland in the Register of the County of Perth.


Solicitor, Edinburgh, Agent

halenc23

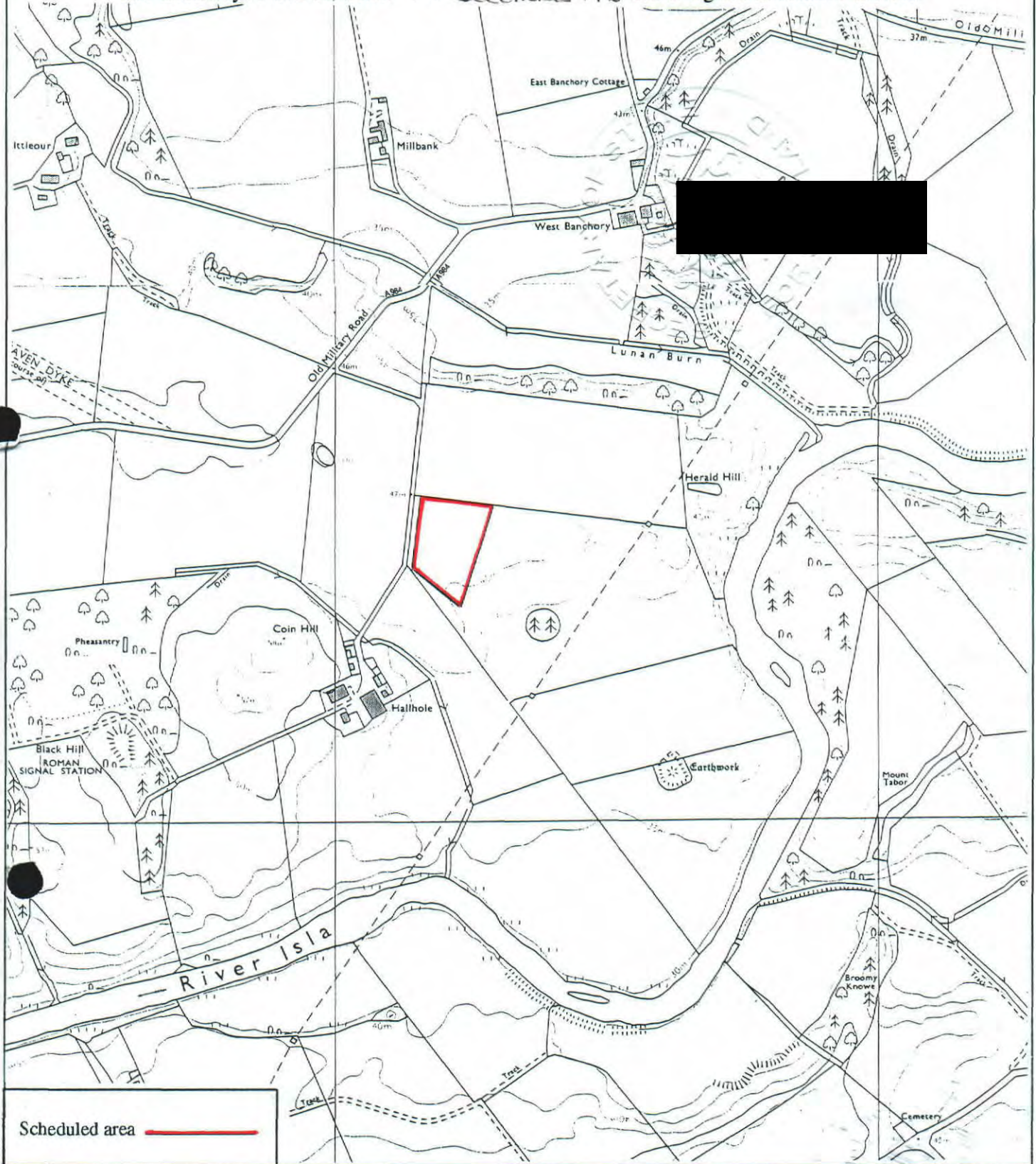
PTH 88 170

REGISTERS OF SCOTLAND
GENERAL REGISTER OF SASINES
COUNTY OF PERTH
FICHE 170 FRAME 38
PRESENTED AND RECORDED ON

25 MAR 1999

38

This is the plan referred to in the entry in the Schedule affecting Hallhole, enclosures and trackways NNE of, dated 17 December 1998 and is signed as relative thereto.



Scheduled area

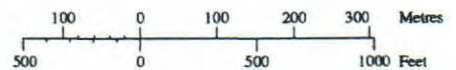
Hallhole, enclosures and trackways NNE of

Caputh Parish



Sheet: NO13NE

Scale 1:10,000



© Crown copyright reserved