

PEH

282

THE ANCIENT MONUMENTS AND
ARCHAEOLOGICAL AREAS ACT 1979

Entry in the Schedule of Monuments

2894

1998

Re: The Monument known as
Hallhole, barrow 600m ESE of

in the Parish of Caputh and
County of Perth

13

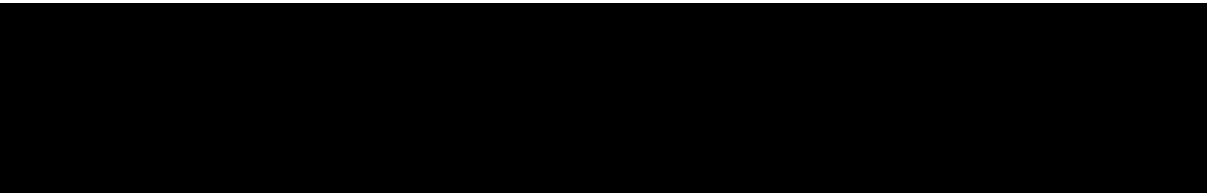
Search Sheet No: 233

#AS 0616

Solicitor
to the
Secretary of State
for Scotland
Victoria Quay
Edinburgh

THE ANCIENT MONUMENTS AND ARCHAEOLOGICAL AREAS ACT 1979
ENTRY IN THE SCHEDULE OF MONUMENTS

The monument known as Hall Hole, barrow 600m ESE of comprises a round barrow of prehistoric date, visible as a cropmark on oblique aerial photographs. The monument comprises a formal burial mound, or barrow, defined by a circular ditch, within which is a central burial pit. The area to be scheduled comprises the remains described and an area around them within which related material may be expected to be found. It is circular with a diameter of 60m. The monument, which lies in the Parish of Caputh and the County of Perth as shown outlined in red on the Plan annexed and executed as relative hereto and

 is hereby included in the Schedule of Monuments appearing to the Secretary of State for Scotland to be of national importance compiled and maintained by him under section 1(1) of the Ancient Monuments and Archaeological Areas Act 1979.


Given under the Seal of the Secretary of State for Scotland.


Assistant Secretary

Date 17 December 1998

Historic Scotland
Longmore House
Salisbury Place
EDINBURGH
EH9 1SH

Register on behalf of the Secretary of State for Scotland in the Register of the County of Perth.


Solicitor, Edinburgh, Agent

MFA06002

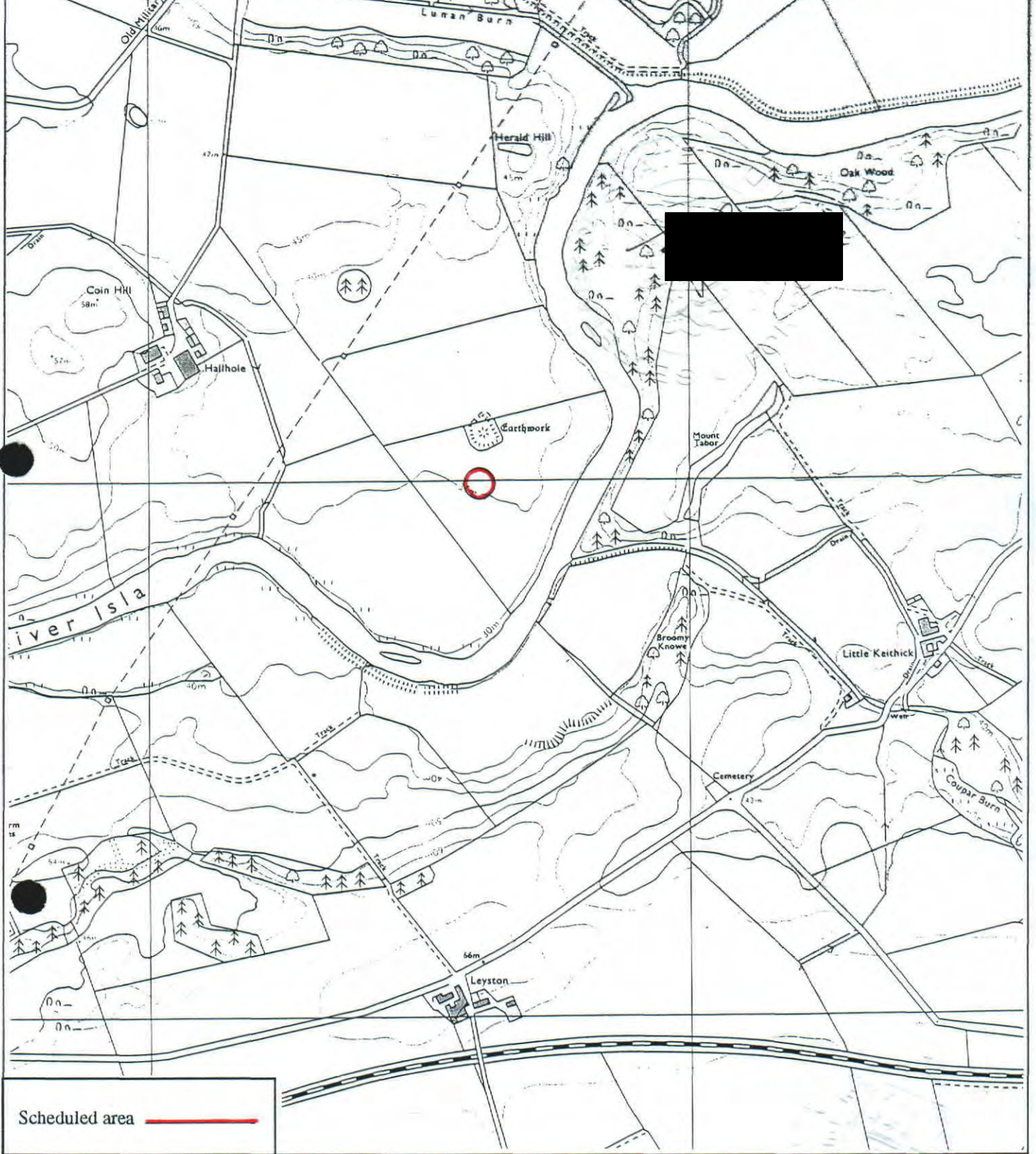
REGISTERS OF SCOTLAND
GENERAL REGISTER OF SASINES
COUNTY OF PERTH
FICHE 170 FRAME 42
PRESENTED AND RECORDED ON

PTH 99 = 170

25 MAR 1999

42

This is the plan referred to in the entry in the Schedule affecting Hallhole, barrow 600m ESE of, dated 17 December 1998 and is signed as relative thereto.



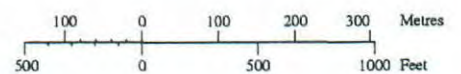
Hallhole, barrow 600m ESE of

Caputh Parish



Sheet: NO13NE

Scale 1:10,000



© Crown copyright reserved