

THE ANCIENT MONUMENTS AND
ARCHAEOLOGICAL AREAS ACT 1979

Entry in the Schedule of Monuments

1997

Re: The Monument known as
Mingulay, village and field system

in the Parish of Barra and
County of Inverness

Search Sheet No: 4448

Solicitor
to the
Secretary of State
for Scotland
Victoria Quay
Edinburgh

MFA08468

4448

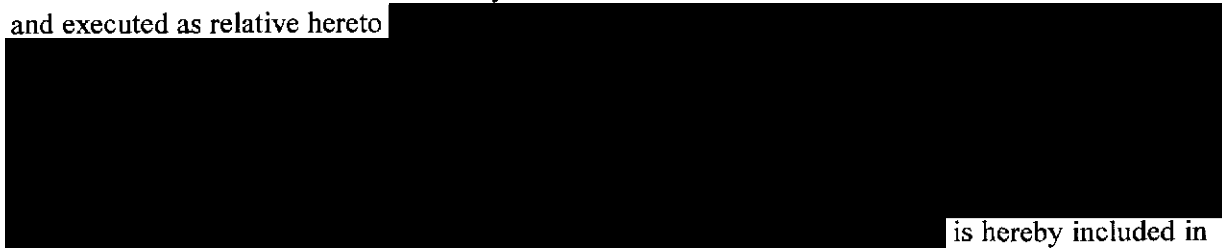
8038

5

444

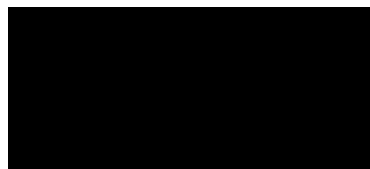
THE ANCIENT MONUMENTS AND ARCHAEOLOGICAL AREAS ACT 1979
ENTRY IN THE SCHEDULE OF MONUMENTS

The monument known as Mingulay, village and field system comprises the remains of the village at Mingulay Bay and its associated field system. The extensive area to be scheduled is defined to the S, W and NW by the substantial head-dyke which bounds the formerly cultivated area. On the E the S part of the boundary follows high water mark as far as the S end of the sandy part of the bay, and then follows an arbitrary line W of N and then NW to a point just E of the chapel house, and then turns to run SW, just excluding the chapel and the enclosure around it. This area includes all of the building remains, enclosures and associated fields and underlying deposits. It excludes the rectangular enclosure and buildings of the former school and schoolhouse. The monument, which lies in the Parish of Barra and the County of Inverness as shown outlined in red on the Plan annexed and executed as relative hereto



is hereby included in the Schedule of Monuments appearing to the Secretary of State for Scotland to be of national importance compiled and maintained by him under section 1(1) of the Ancient Monuments and Archaeological Areas Act 1979.

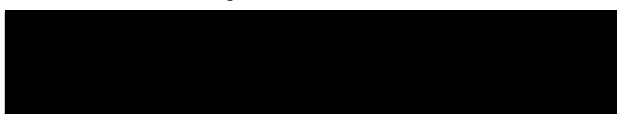
Given under the Seal of the Secretary of State for Scotland.



Assistant Secretary
Date 20 February 1997

Historic Scotland
Longmore House
Salisbury Place
EDINBURGH
EH9 1SH

Register on behalf of the Secretary of State for Scotland in the Register of the County of Inverness.



Solicitor, Edinburgh, Agent

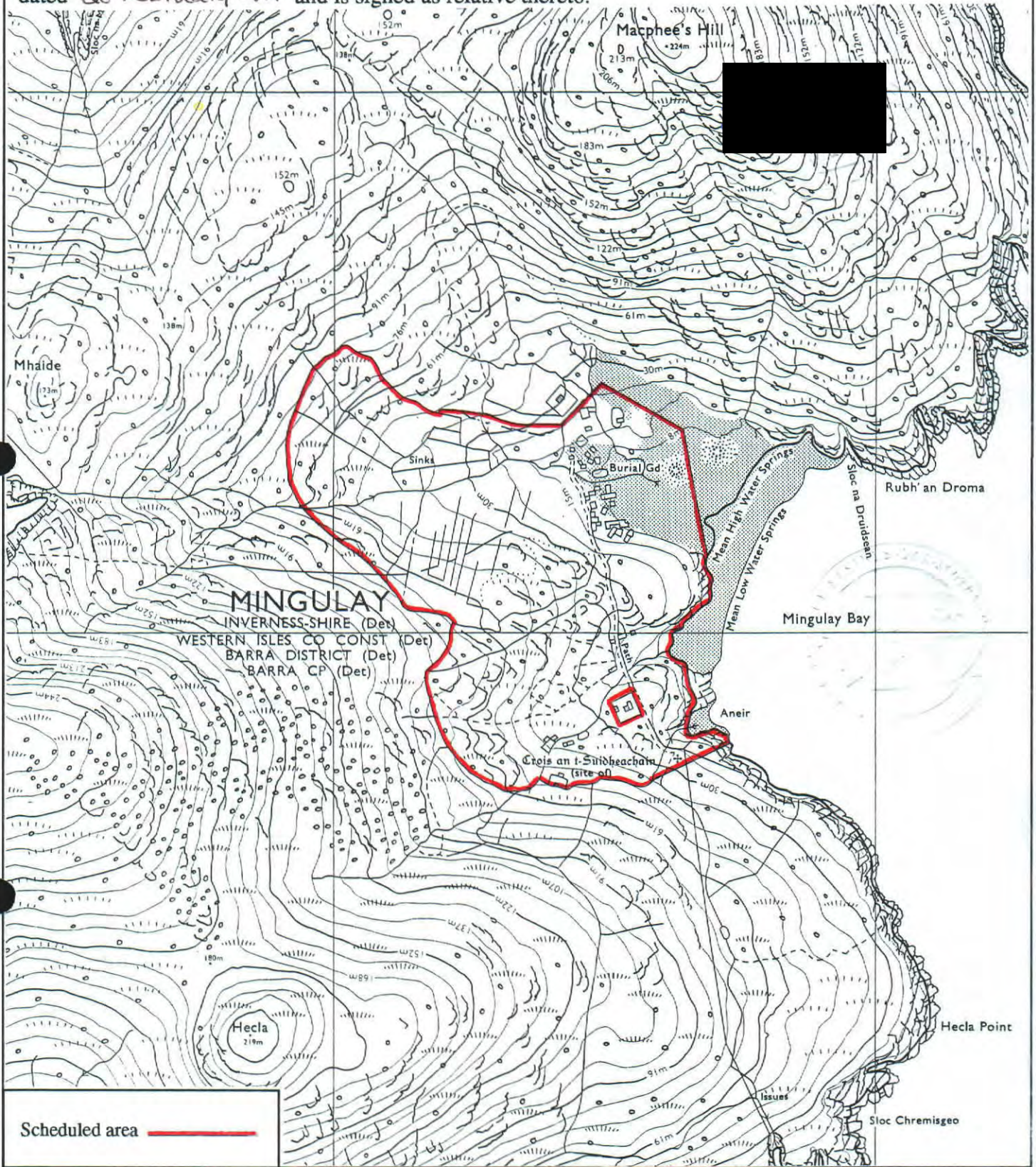
MFA08768

INV 97 567

REGISTERS OF SCOTLAND
GENERAL REGISTER OF SASINES
COUNTY OF INVERNESS
FICHE 567 FRAME 43
PRESENTED & RECORDED ON -9 OCT 1997

43

This is the plan referred to in the entry in the Schedule affecting Mingulay, village and field system, dated 20 February 1997 and is signed as relative thereto.



Mingulay, village and field system

Barra Parish

↑
N

Sheet: NL58SE

Scale 1:10,000

500 100 0 100 200 300 Metres
500 0 500 1000 Feet

© Crown copyright reserved