

THE ANCIENT MONUMENTS AND ARCHAEOLOGICAL AREAS ACT 1979 6217  
ENTRY IN THE SCHEDULE OF MONUMENTS

The monument known as **Newbarns, unenclosed settlement 520m NE of** comprises the remains of an unenclosed settlement dating to between 1800 BC and AD 400. The settlement lies buried beneath the ploughsoil and is visible as cropmarks captured on oblique aerial photographs. Numerous dark crescent- and disc-shaped marks indicate a dense distribution of roundhouses, some immediately adjacent to one another and potentially representing houses of different dates. The monument lies around 5m above sea level on relatively flat ground some 350m inland from the coast. The scheduled area is irregular on plan to include the remains described above and an area around them within which evidence relating to the monument's construction, use and abandonment is expected to survive. The monument, which lies in the Parish of Inverkeilor and the County of Angus as shown in red on the Plan annexed and executed as relative hereto

[REDACTED],  
is hereby included in the Schedule of Monuments appearing to the Scottish Ministers to be of national importance compiled and maintained by them under section 1(1) of the Ancient Monuments and Archaeological Areas Act 1979.

This entry supersedes the Entry in the Schedule of Monuments for the monument known then as **Newbarns, settlement, souterrains and cursus 500m NE of** as referred to in the Entry in the Schedule of Monuments by the Secretary of State for Scotland in respect of the monument dated 21 August 1995 and recorded in the General Register of Sasines for the County of Angus on 6 November 1995.

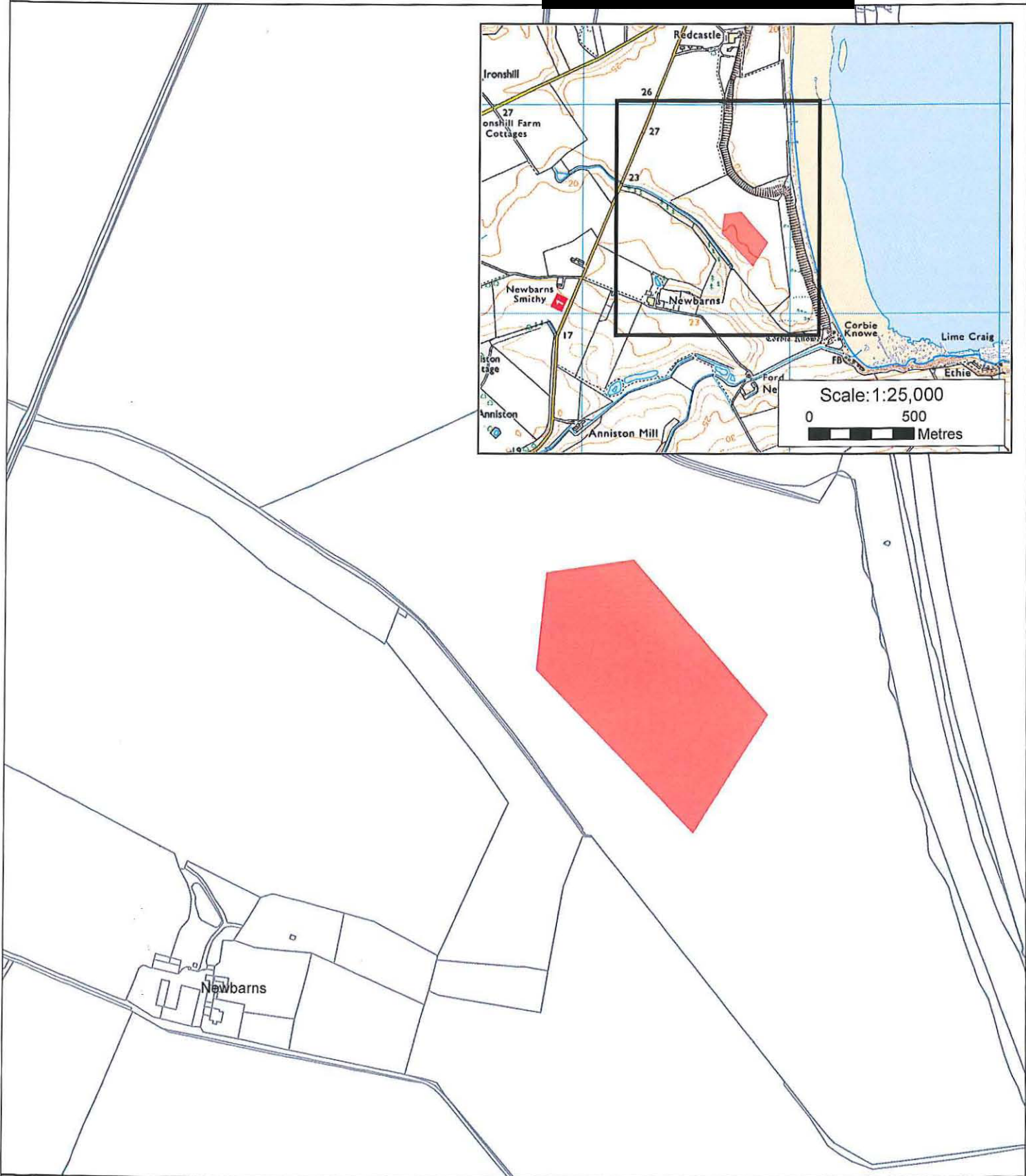
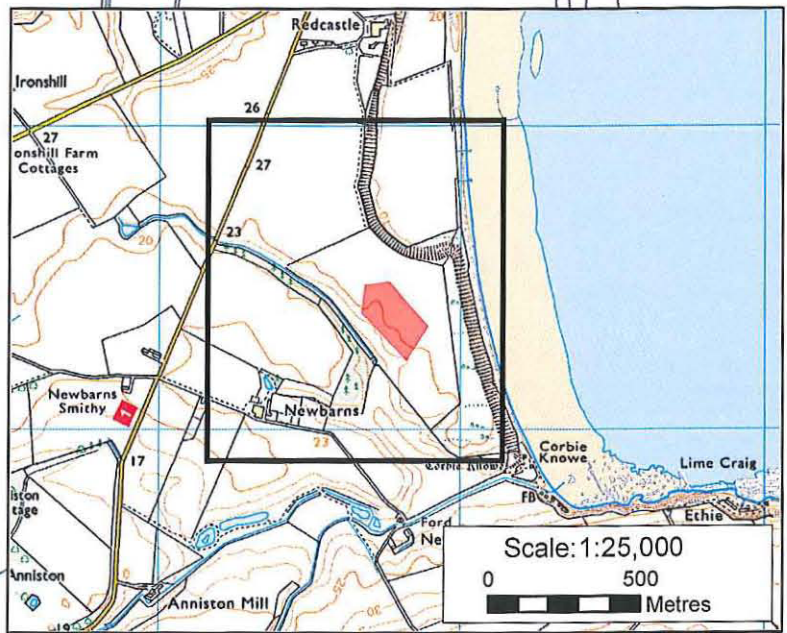
Subscribed by Olwyn A Owen, Head of Scheduling, Marine and Battlefields with Historic Scotland, being an officer of the Scottish Ministers at Edinburgh on the *16<sup>th</sup>* day of *January* Two thousand and fifteen, before this witness Christine Kelly, of Longmore House, Salisbury Place, Edinburgh.


[REDACTED] \_\_\_\_\_ Head of Scheduling, Marine and Battlefields

[REDACTED] \_\_\_\_\_ Witness


This is the plan referred to in the entry in the Schedule affecting:  
Newbarns, unenclosed settlement 520m NE of

dated: 161115 and is signed as relative thereto. [REDACTED]



Index No: 6217  
Newbarns, unenclosed settlement  
520m NE of  
Inverkeilor Parish  
Scheduled Area 

N  
  
Map Sheet(s):  
NO64NE

Scale: 1:5,000  
0 50 100  
 Metres  
This map is reproduced from Ordnance Survey material with the permission of Ordnance Survey on behalf of the Controller of Her Majesty's Stationery Office © Crown copyright. Unauthorised reproduction infringes Crown copyright and may lead to prosecution or civil proceedings. Historic Scotland Licence No. 100017509 [2014].

THE ANCIENT MONUMENTS AND  
ARCHAEOLOGICAL AREAS ACT 1979

Entry in the Schedule of Monuments

2015

Re: The Monument known as  
**Newbarns, unenclosed settlement**  
**520m NE of**

in the Parish of Inverkeilor and  
County of Angus

Search Sheet Nos: 64479  
93741

Historic Scotland  
Longmore House  
Salisbury Place  
Edinburgh