

11746

21 APR 1995	
No.	2868
FEE	£22.00

INV
12

THE ANCIENT MONUMENTS AND
ARCHAEOLOGICAL AREAS ACT 1979

Entry in the Schedule of Monuments

Handwritten scribbles

1994

Re: The Monument known as
Corrieyairack Pass, military road, Black
Burn to Connachie Burn

in the Parish of Boleskine and Abertarff and
County of Inverness

Search Sheet No: 11746

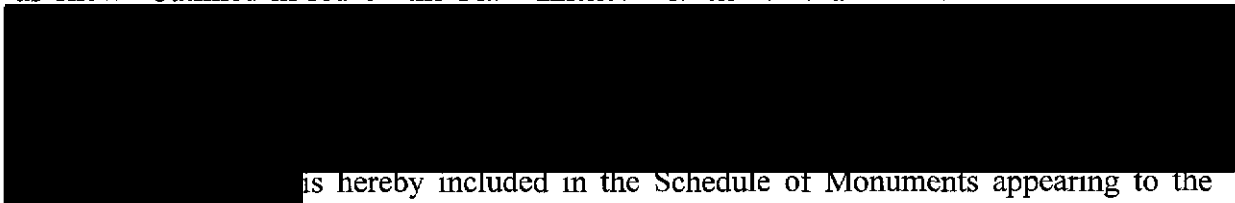
Solicitor
to the
Secretary of State
for Scotland
New St Andrew's House
Edinburgh

AS 7333

MDO04846

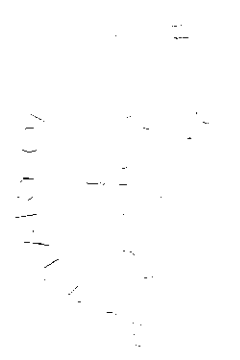
THE ANCIENT MONUMENTS AND ARCHAEOLOGICAL AREAS ACT 1979
ENTRY IN THE SCHEDULE OF MONUMENTS

The monument known as Corrieyairack Pass, military road, Black Burn to Connachie Burn comprises a length of military road approximately 3.5km long, running between Black Burn in the S and Connachie Burn in the N. The area to be scheduled measures 30m wide, centred on the road bed of the military road, between Black Burn and Connachie Burn but excludes the modern structure of the bridge over the Connachie Burn. It includes the road, its ditches and an area which may contain evidence for their construction and use. The monument, which lies in the Parish of Boleskine and Abertarff and the County of Inverness as shown outlined in red on the Plan annexed and executed as relative hereto and which



is hereby included in the Schedule of Monuments appearing to the Secretary of State for Scotland to be of national importance compiled and maintained by him under section 1(1) of the Ancient Monuments and Archaeological Areas Act 1979.

Given under the Seal of the Secretary of State for Scotland.



Assistant Secretary
Date 14 OCTOBER 1994

Historic Scotland
Longmore House
Salisbury Place
Edinburgh
EH9 1SH



Register on behalf of the Secretary of State for Scotland in the Register of the County of Inverness.



Solicitor, Edinburgh, Agent

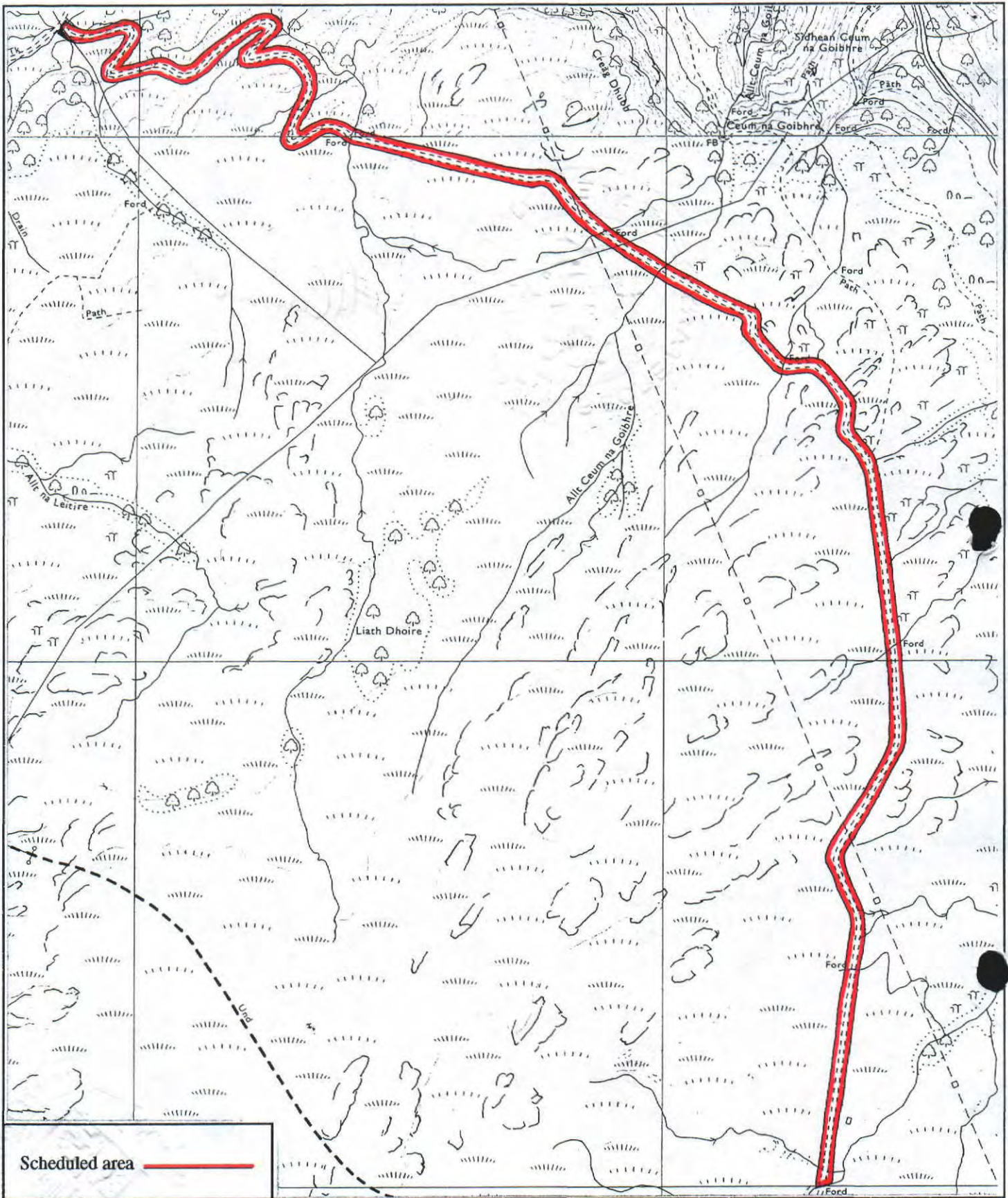
MDO04746

INV 9 5 1 9 3

REGISTERS OF SCOTLAND
GENERAL REGISTER OF SASINES
COUNTY OF INVERNESS


Fiche... 193... Frame... 19...

Presented and Recorded on 21 APR 1995

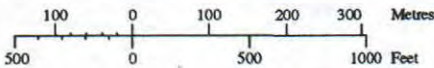


**Corrieyairack Pass, military road,
Black Burn to Connachie Burn**

Boleskine and Abertarff Parish


N
 Sheets: NH30SE
 NH30NE

Scale 1:10,000



© Crown copyright reserved

INV 9 5 1 9 3

HMSO Cartographic Centre 9407289

21