

Abn

THE ANCIENT MONUMENTS AND
ARCHAEOLOGICAL AREAS ACT 1979

Entry in the Schedule of Monuments

198
94

1994

Re: The Monument known as
Strath Howe, fort
in the Parish of Aberdour and
County of Aberdeen

Search Sheet No: 30277 & 30165

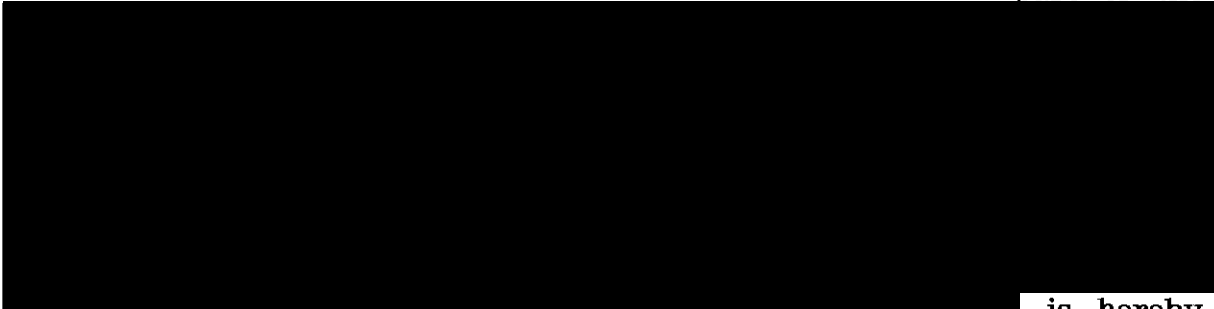
Solicitor
to the
Secretary of State
for Scotland
New St Andrew's House
Edinburgh

Inc 7333

5956

THE ANCIENT MONUMENTS AND ARCHAEOLOGICAL AREAS ACT 1979
ENTRY IN THE SCHEDULE OF MONUMENTS

The monument known as Strath Howe, fort comprises the remains of a prehistoric fort situated on a steep-sided promontory between two deep meltwater channels on the E side of Tore of Troup. The area to be scheduled measures a maximum of 650m NE-SW and a maximum of 190m NW-SE to include the fort described above and an area around the visible features where remains associated with the construction and use of the fort may survive. The monument, which lies in the Parish of Aberdour and the County of Aberdeen as shown outlined in red on the Plan annexed and executed as relative hereto and which forms part of the



is hereby included in the Schedule of Monuments appearing to the Secretary of State for Scotland to be of national importance compiled and maintained by him under section 1(1) of the Ancient Monuments and Archaeological Areas Act 1979.

Given under the Seal of the Secretary of State for Scotland.



Assistant Secretary
Date 21 MARCH 1994

Historic Scotland
20 Brandon Street
Edinburgh
EH3 5RA

Register on behalf of the Secretary of State for Scotland in the Register of the County of Aberdeen.


Solicitor, Edinburgh, Agent

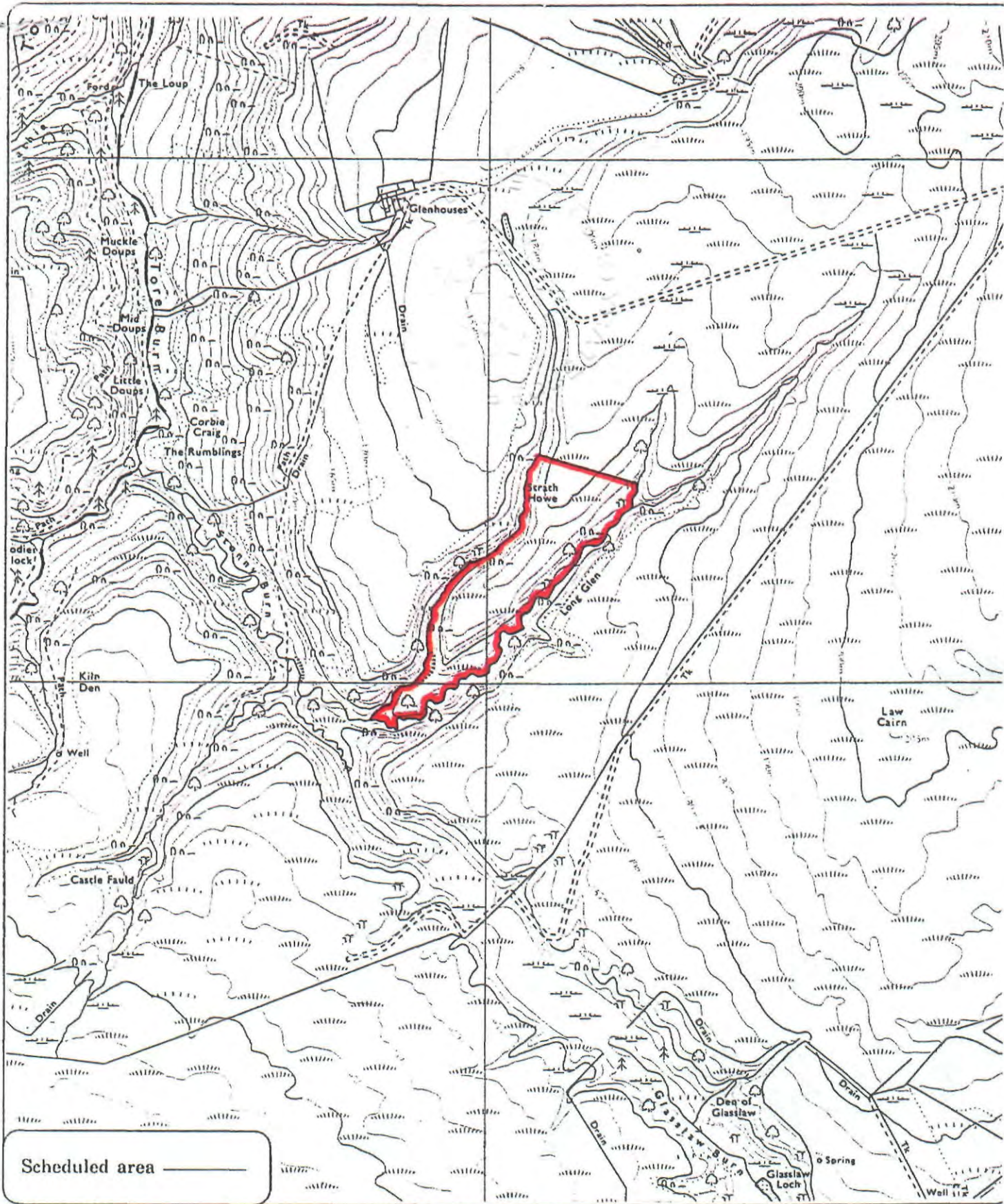
29

679



MDO04146.SCH

REGISTERS OF SCOTLAND
GENERAL REGISTER OF SASINES
COUNTY OF ABERDEEN
Fiche679..... Frame29.....
Presented and Recorded on6 APR 1994.....



Scheduled area ———

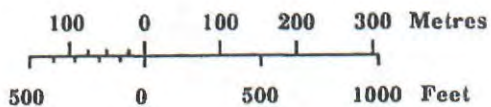
Strath Howe, fort

Aberdour Parish



Sheet : NJ 86 SW

Scale : 1/10,000



© Crown copyright reserved