

*Banff*

THE ANCIENT MONUMENTS AND  
ARCHAEOLOGICAL AREAS ACT 1979

Entry in the Schedule of Monuments

1994

Re: The Monument known as  
Ironstone Mine, mine and surface  
workings 800m NNE of Well of the  
Lecht

in the Parish of Kirkmichael and  
County of Banff

Search Sheet No: 51

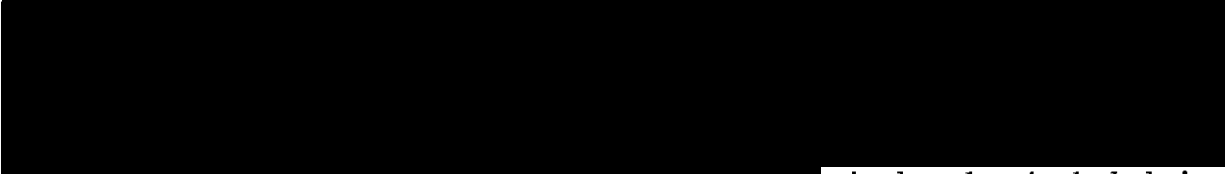
Solicitor  
to the  
Secretary of State  
for Scotland  
New St Andrew's House  
Edinburgh

*KO 7333*

5345

THE ANCIENT MONUMENTS AND ARCHAEOLOGICAL AREAS ACT 1979  
ENTRY IN THE SCHEDULE OF MONUMENTS

The monument known as Ironstone Mine, mine and surface workings 800m NNE of Well of The Lecht comprises the remains of an iron-manganese mine and associated surface workings and structures. The area to be scheduled is irregular on plan and measures a maximum of 500m NNE-SSW by 160m E-W, to contain all of the surface and underground workings and associated surface buildings. The monument, which lies in the Parish of Kirkmichael and the County of Banff as shown outlined in red on the Plan annexed and executed as relative hereto and which forms part of the



is hereby included in the Schedule of Monuments appearing to the Secretary of State for Scotland to be of national importance compiled and maintained by him under section 1(1) of the Ancient Monuments and Archaeological Areas Act 1979.

Given under the Seal of the Secretary of State for Scotland.



Assistant Secretary  
Date 7 MARCH 1994

Historic Scotland  
20 Brandon Street  
Edinburgh  
EH3 5RA

Register on behalf of the Secretary of State for Scotland in the Register of the County of Banff.



Solicitor, Edinburgh, Agent

BA94 74

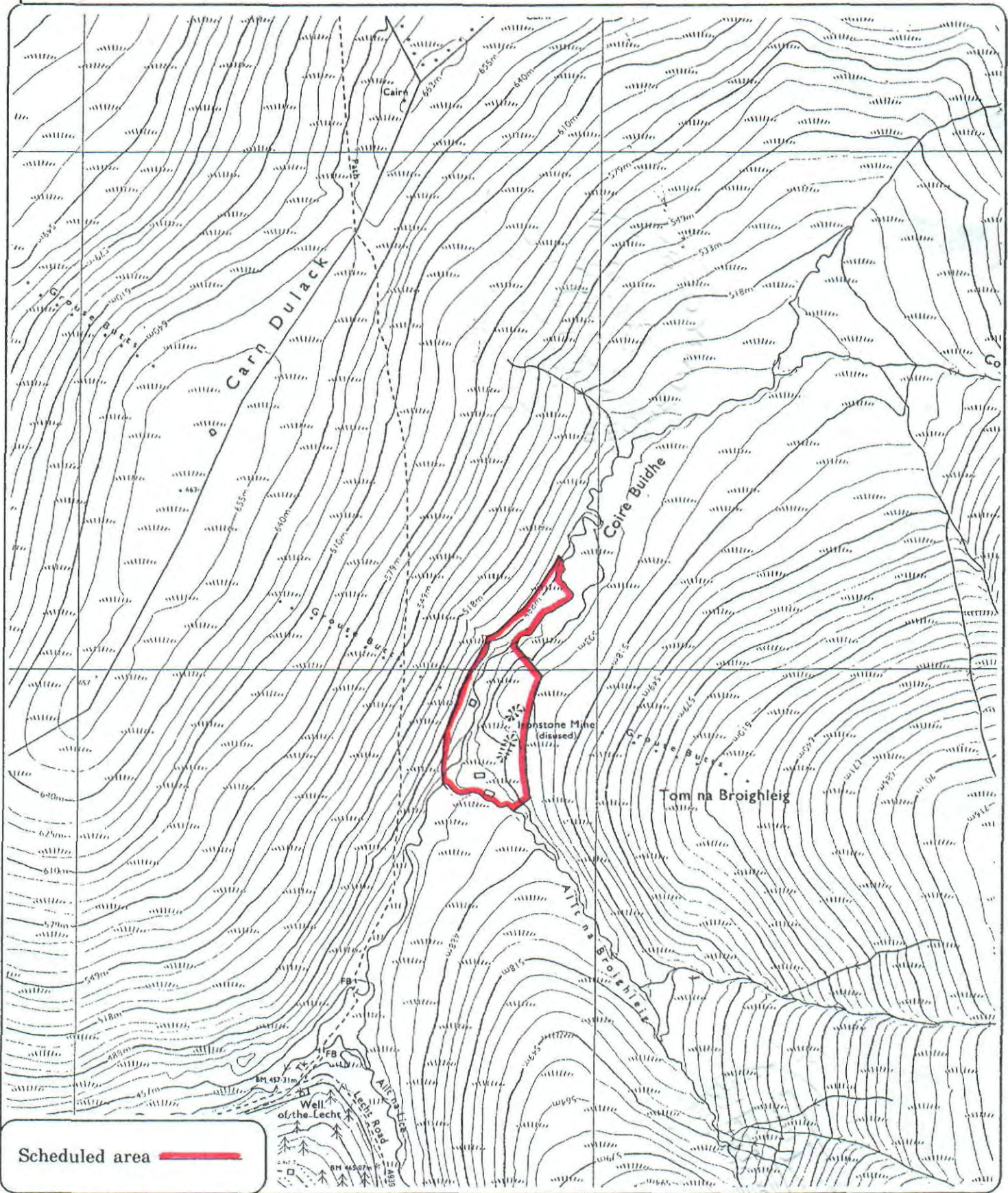
400

REGISTERS OF SCOTLAND  
GENERAL REGISTER OF SASINES  
COUNTY OF BANFF

Fiche.....74... Frame.....2!.....

MDO01642.SCH

Presented and Recorded on ..13-APR-1994



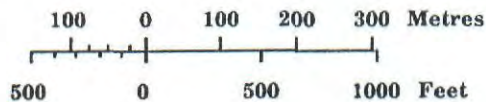
**Ironstone Mine, mine & surface workings 800m NNE of Well of the Lecht**

**Kirkmichael Parish**



**Sheet : NJ 21 NW**

**Scale : 1/10,000**



© Crown copyright reserved