

INVEST
AC

22 OCT 1992
8826
e. 122.00

THE ANCIENT MONUMENTS AND
ARCHAEOLOGICAL AREAS ACT 1979

Entry in the Schedule of Monuments

1992

Re: The Monument known as
Caledonian Canal, Kyltra Lock

in the Parish of Boleskine and Abertarff
and
County of Inverness

10

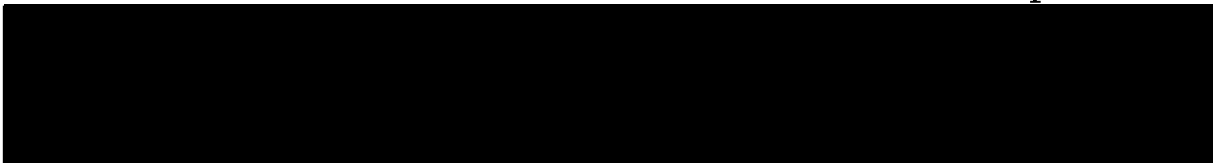
File Ref:

Solicitor
to the
Secretary of State
for Scotland
New St Andrew's House
Edinburgh

FAS

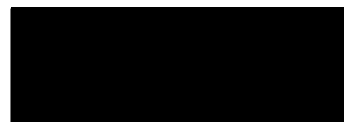
THE ANCIENT MONUMENTS AND ARCHAEOLOGICAL AREAS ACT 1979
ENTRY IN THE SCHEDULE OF MONUMENTS

The monument known as Caledonian Canal, Kyltra Lock comprises a standard masonry-walled Caledonian Canal lock, with associated working areas. The area to be scheduled is approximately 120m by 60m. The modern lock gates and hydraulic control gear are excluded from the scheduling. The monument, which lies in the Parish of Boleskine and Abertarff and the County of Inverness as shown outlined in red on the Plan annexed and executed as relative hereto and which forms part of the



is hereby included in the Schedule of Monuments appearing to the Secretary of State for Scotland to be of national importance compiled and maintained by him under section 1(1) of the Ancient Monuments and Archaeological Areas Act 1979.

Given under the Seal of the Secretary of State for Scotland.



Assistant Secretary
Date 6 APRIL 1992

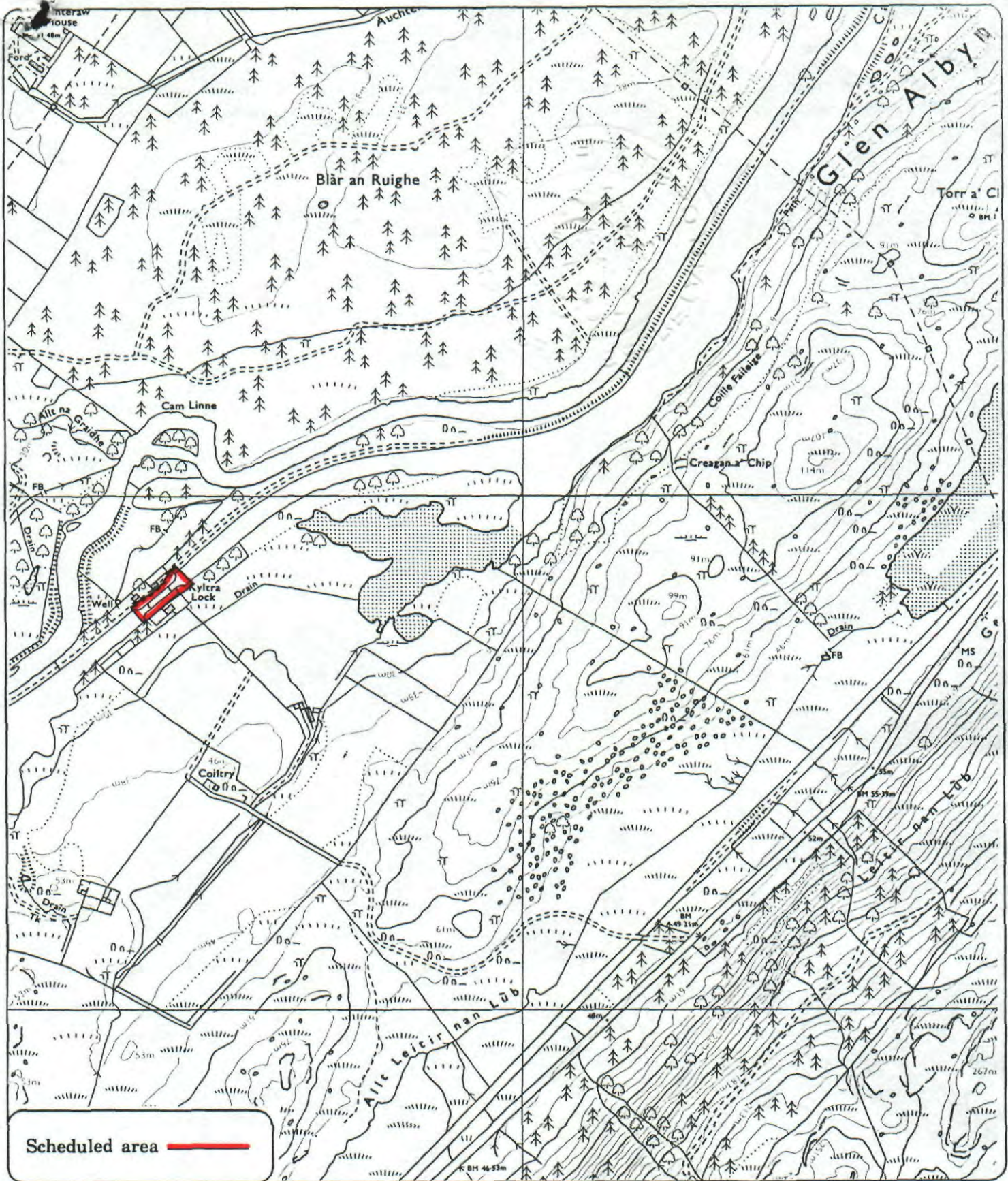
Historic Scotland
20 Brandon Street
Edinburgh
EH3 5RA


Register on behalf of the Secretary of State for Scotland in the Register of the County of Inverness.


Solicitor, Edinburgh, Agent

REGISTERS OF SCOTLAND
GENERAL REGISTER OF SASINES
COUNTY OF INVERNESS

GF
Fiche....617.... Frame....7.....
Presented and Recorded on ... 22 OCT 1992



Scheduled area 

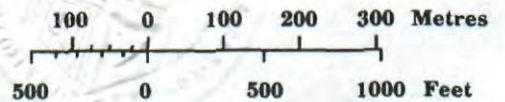
Caledonian Canal, Kyltra Lock

Boleskine & Abertarff Parish



Sheet : NH 30 NE

Scale : 1/10,000



© Crown copyright reserved

IN 9 2 6 1 7