

NWSE  
12.00

4 SEP 1991	
NO.	07899
FEE	£ 122.00

THE ANCIENT MONUMENTS AND  
ARCHAEOLOGICAL AREAS ACT 1979

Entry in the Schedule of Monuments

1991

Re: The Monument known as  
Erchless Castle, dun 650m WNW of

in the Parish of Kiltarlity and Convinth  
and County of Inverness

28

File Ref:

( 24 25 )

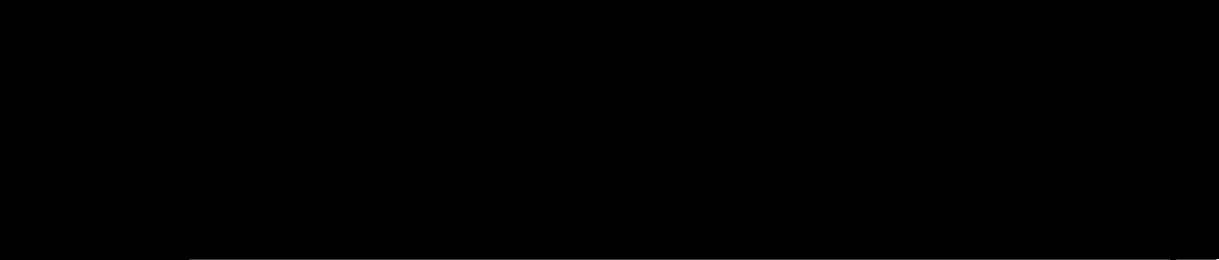
Solicitor  
to the  
Secretary of State  
for Scotland  
New St Andrew's House  
Edinburgh

FAS 7247

5004

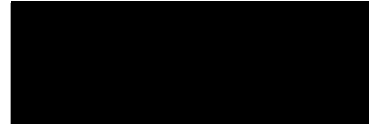
THE ANCIENT MONUMENTS AND ARCHAEOLOGICAL AREAS ACT 1979  
ENTRY IN THE SCHEDULE OF MONUMENTS

The monument known as Erchless Castle, dun 650m WNW of comprises the remains of a sub-circular dun of the Iron Age, measuring 12.3m NE-SW by 13m transversely within a tumbled wall 2.6m wide with inner and outer faces occasionally visible. The entrance lies in the south east. Outside the dun wall on the south and east are the footings of an outer wall. The area to be scheduled, to include the dun, the outer wall and an area around them in which traces of activities associated with their use may survive, measures 50m in diameter. The monument, which lies in the Parish of Kiltarilty and Convinth and the County of Inverness as shown outlined in red on the Plan annexed and executed as relative hereto and which forms part of the subjects under exception of (1) subjects in



is hereby included in the Schedule of Monuments appearing to the Secretary of State for Scotland to be of national importance compiled and maintained by him under section 1(1) of the Ancient Monuments and Archaeological Areas Act 1979.

Given under the Seal of the Secretary of State for Scotland.



Assistant Secretary  
Date 13 March 1991

Historic Buildings and Monuments, Scotland  
20 Brandon Street  
Edinburgh  
EH3 5RA

Register on behalf of the Secretary of State for Scotland in the Register of the County of Inverness.

Solicitor, Edinburgh, Agent

IN 9 1 5 0 0

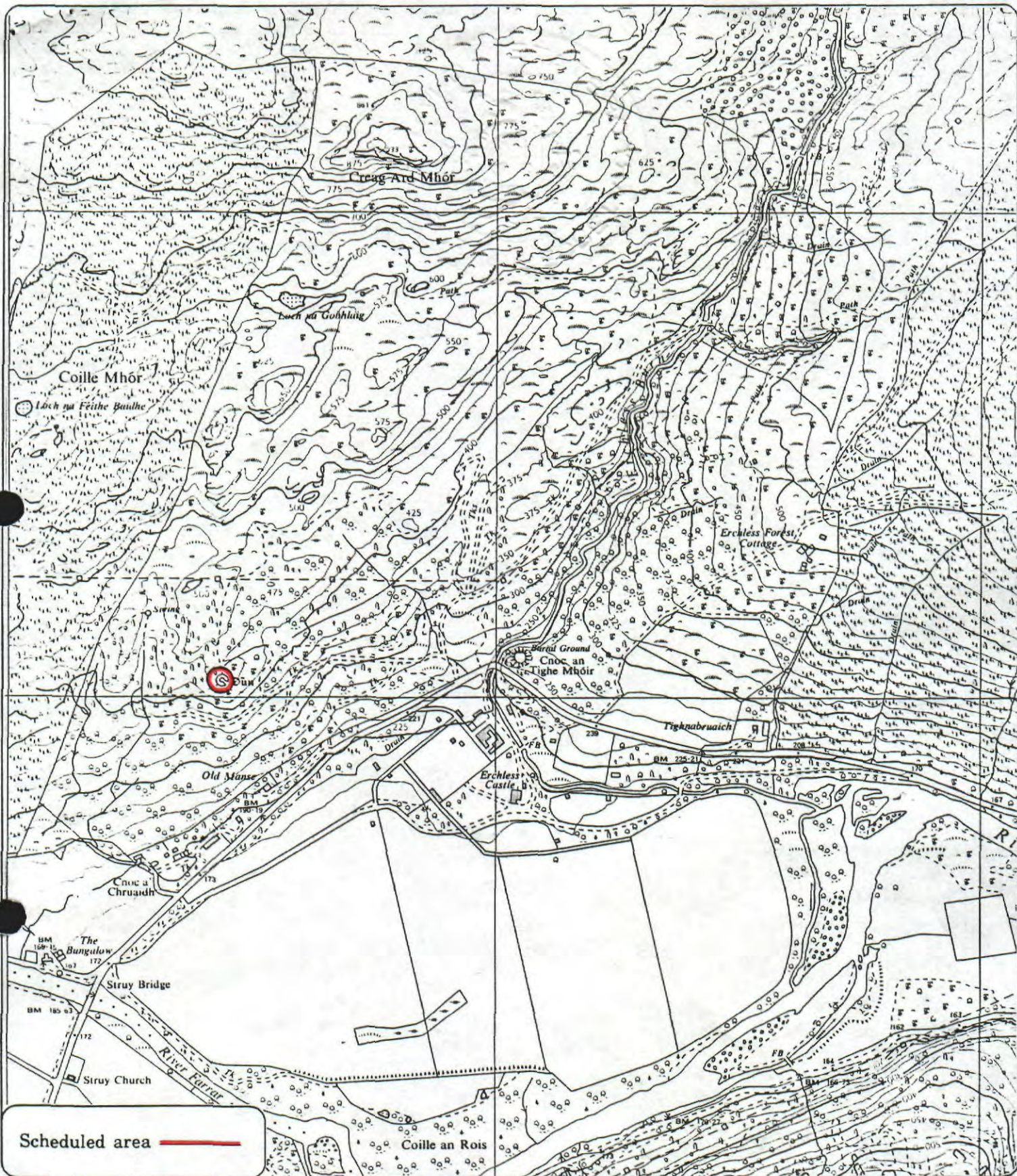
L2102444.120

REGISTERS OF SCOTLAND  
GENERAL REGISTER OF SASINES  
COUNTY OF INVERNESS

Fiche... 500 ..... Frame... 37 .....

Presented and Recorded on - 4 SEP 1991

31

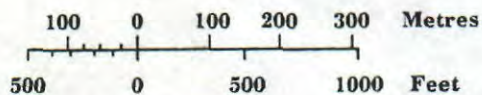


Scheduled area

**Erchless Castle,**  
dun 650m WNW of



Scale : 1/10,560



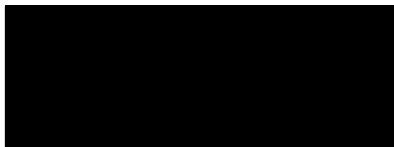
**Kiltarlity and Convinth Parish**  
IN 9 1 500

Sheet NH 44 SW

© Crown copyright reserved

39

This is the plan referred to in the entry in the schedule affecting Erchless Castle, dun  
650m WNW of , dated 13 March 1991 and is signed as relative thereto.



IN 9 1 500

30