

THE ANCIENT MONUMENTS AND
ARCHAEOLOGICAL AREAS ACT 1979

Entry in the Schedule of Monuments

18 OCT 1989	No. 04309	FAS 7338
-------------	-----------	----------

1.2.89

1989

Re: The Monument known as
Eileanach Lodge, settlement and field
system 550m WSW of

in the Parish of Kiltearn and County of
Ross and Cromarty

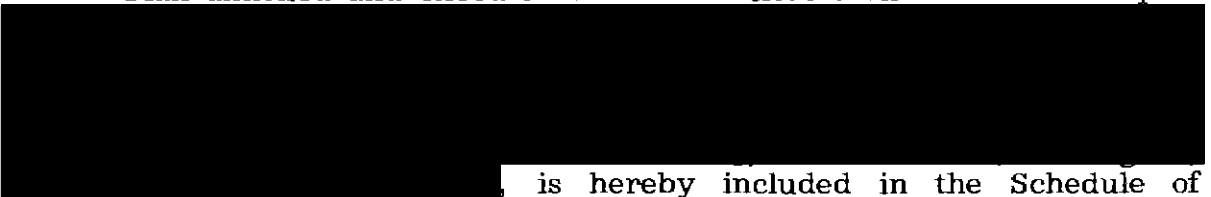
File Ref:

Solicitor
to the
Secretary of State
for Scotland
New St Andrew's House
Edinburgh

FAS 7338

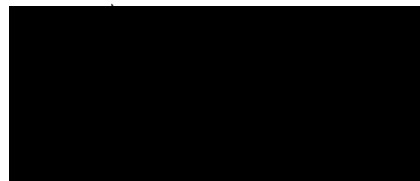
THE ANCIENT MONUMENTS AND ARCHAEOLOGICAL AREAS ACT 1979
ENTRY IN THE SCHEDULE OF MONUMENTS

The monument known as Eileanach Lodge, settlement and field system 550m WSW of comprises the remains of a settlement of the period before the agricultural improvements with associated enclosures and yards; there are the remains of a longhouse (measuring 31.6m E-W by 4m transversely with two internal sub-divisions and a porch type door on the south) abutted by two smaller rectangular buildings. There are also the remains of a corn-drying kiln, five further rectangular building foundations, stock enclosures and field walls. The area to be scheduled measures 120m N-S by 95m E-W, to include the settlement and its associated enclosures and yards, and an area around them in which traces of activity associated with their use will survive, the area is bounded on the NE by a forest track. The monument, which lies in the Parish of Kiltearn and the County of Ross and Cromarty as shown outlined in red on the Plan annexed and executed as relative hereto and which forms part



is hereby included in the Schedule of Monuments appearing to the Secretary of State for Scotland to be of national importance compiled and maintained by him under section 1(1) of the Ancient Monuments and Archaeological Areas Act 1979.

Given under the Seal of the Secretary of State for Scotland.

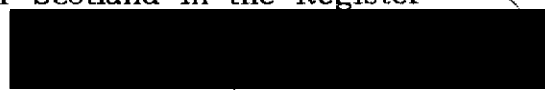


Assistant Secretary

Date *14 September 1989*

Scottish Development Department
Historic Buildings and Monuments
20 Brandon Street
Edinburgh
EH3 5RA

Register on behalf of the Secretary of State for Scotland in the Register of the County of Ross and Cromarty.



REGISTRY OF SCOTLAND, Agent
GENERAL REGISTER OF BUSINESS
COUNTY OF ROSS & CROMARTY

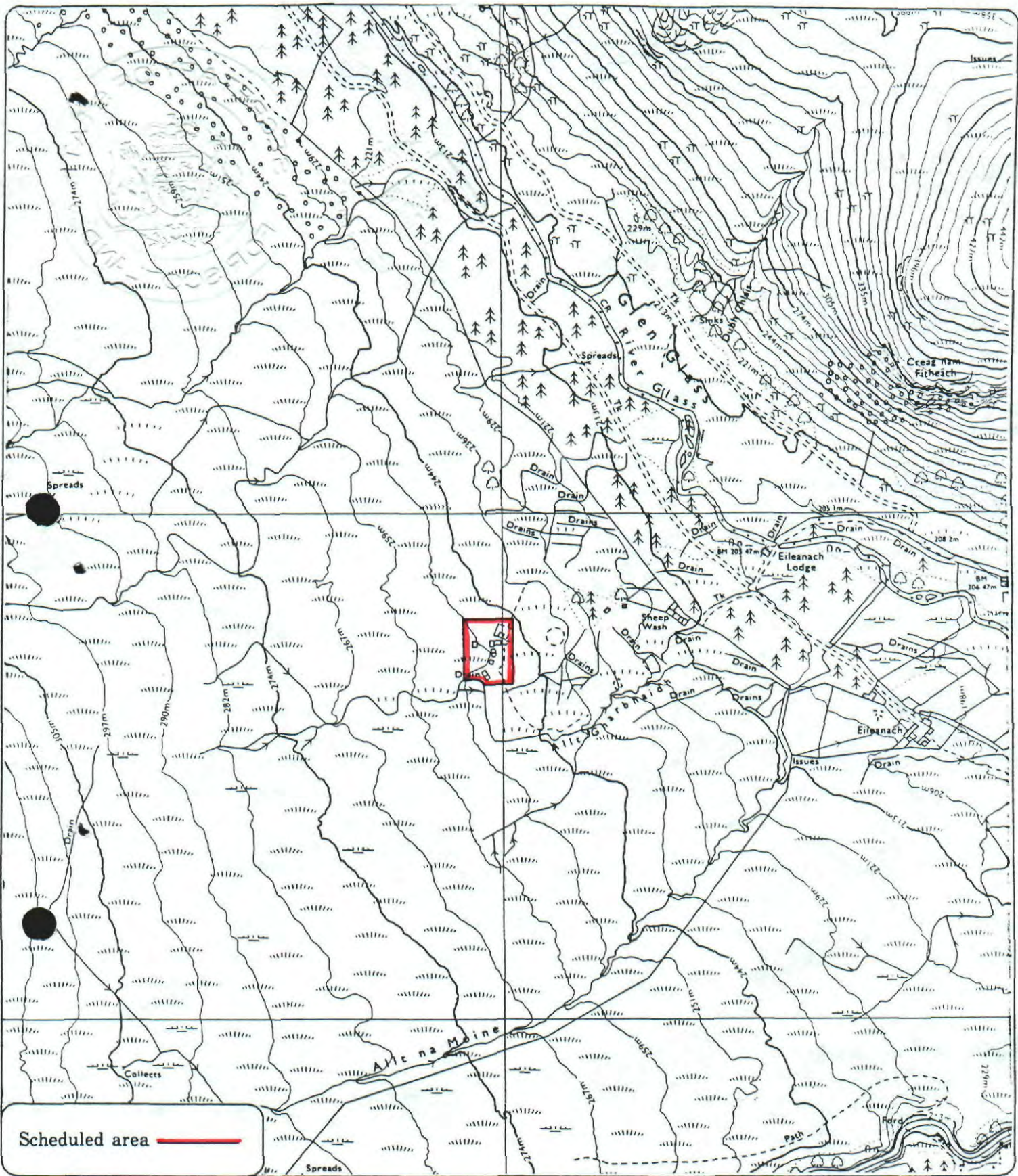
B2104214.049

RC 89 181

Fiche..... Frame.....

Presented and Recorded on *18*.OCT.1989

32



Scheduled area

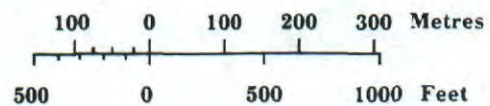
**Eileanach Lodge,
settlement and field system
550m WSW of**

Kiltearn Parish



Sheet : NH 56 NW

Scale : 1/10,000



© Crown copyright reserved