

4625

THE ANCIENT MONUMENTS AND
ARCHAEOLOGICAL AREAS ACT 1979

Entry in the Schedule of Monuments

27/11/89	584157112	11.00
----------	-----------	-------

1989

Re: The Monument known as
Finzean House, long cairn 390m N of

in the Parish of Birse and County
of Aberdeen

*Letter
with
12/11*

*9687
5000*

File Ref:

Solicitor
to the
Secretary of State
for Scotland
New St Andrew's House
Edinburgh

A2100231.118

FAS 7534

THE ANCIENT MONUMENTS AND ARCHAEOLOGICAL AREAS ACT 1979
ENTRY IN THE SCHEDULE OF MONUMENTS

The monument known as Finzean House, long cairn 390m N of comprises a neolithic long cairn measuring 33m ESE/WNW and up to 26m NNE/SSW and an area within which traces of activities associated with the cairn will survive measuring 55m ESE/WNW by 40m NNE/SSW with its easterly edge 15m from the easterly face of the cairn. The monument which lies in the Parish of Birse and the County of Aberdeen as shown outlined in red on the Plan annexed and executed as relative hereto and which forms part of

[REDACTED] is hereby included in the Schedule of Monuments appearing to the Secretary of State for Scotland to be of national importance compiled and maintained by him under section 1(1) of the Ancient Monuments and Archaeological Areas Act 1979.

Given under the Seal of the Secretary of State for Scotland.

[REDACTED]

Assistant Secretary

Date 7/2/89

Scottish Development Department
Historic Buildings and Monuments
20 Brandon Street
Edinburgh
EH3 5RA

Register on behalf of the Secretary of State for Scotland in the Register of the County of Aberdeen.

[REDACTED]
Solicitor, Edinburgh, Agent

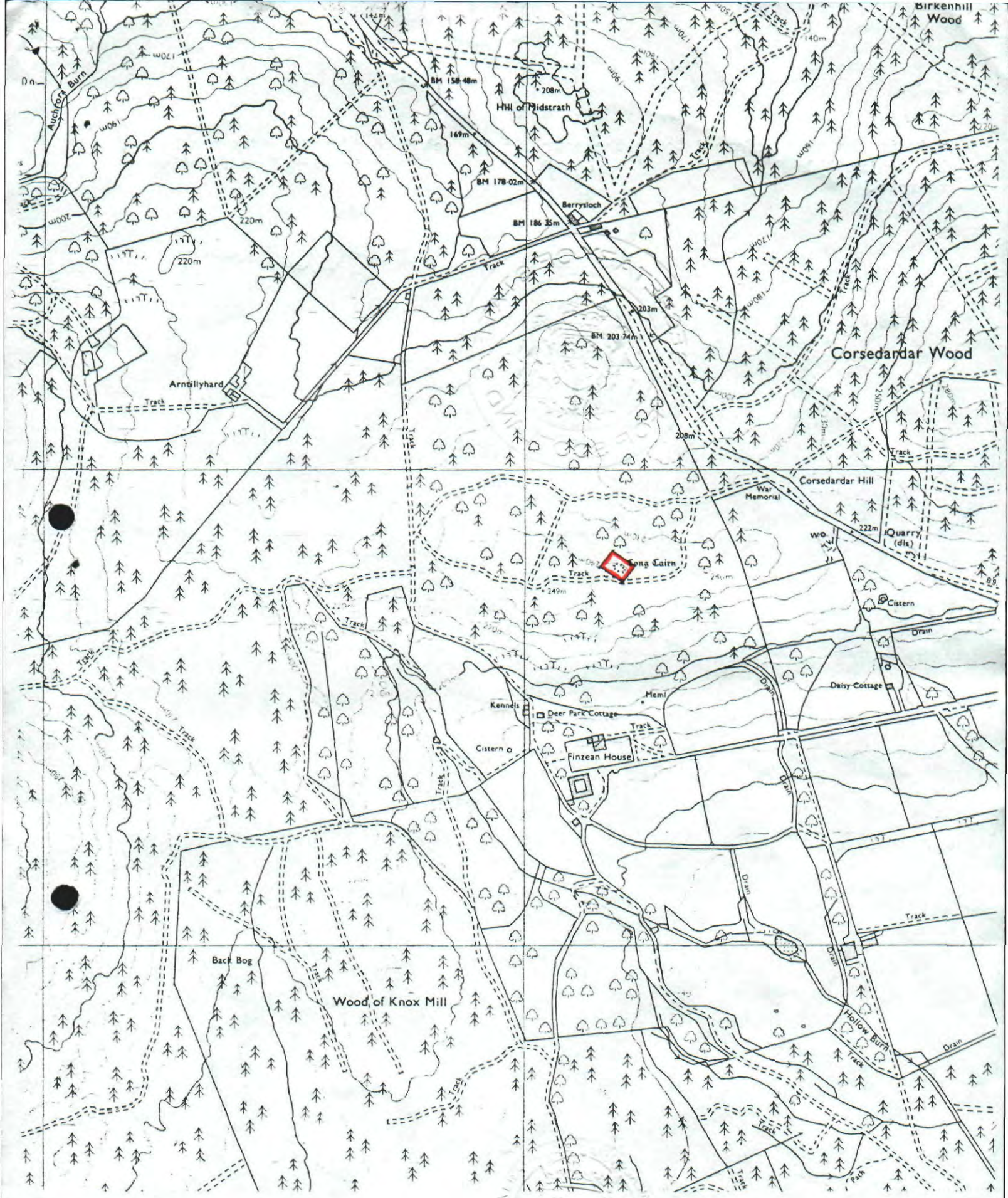
AB 89 0097

A2100331.118

REGISTERS OF SCOTLAND
GENERAL REGISTER OF SASINES
COUNTY OF ABERDEEN

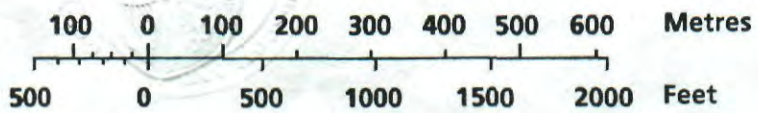
Fiche...97..... Frame...11.....

Presented and Recorded on 27 FEB 1989



Finzean House, long cairn
390m N of

Scale : 1/10 000



Birse Parish AB 89 0097

Sheet NO 59 SE

© Crown copyright reserved

12