

THE ANCIENT MONUMENTS AND
ARCHAEOLOGICAL AREAS ACT 1979

23 JUL 1988
No 03320
CR 11.00
AMC

Entry in the Schedule of Monuments

1988

Re: The Monument known as
Hillhead, long cairn 320m SW of Upper
Craighill

in the Parish of Arbuthnott and
County of Kincardine

10 30

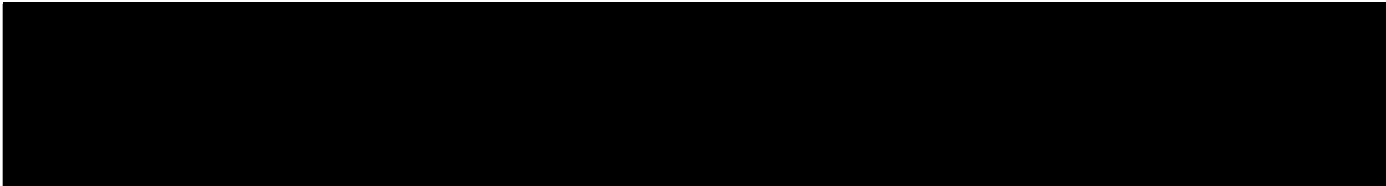
File Ref:

Solicitor
to the
Secretary of State
for Scotland
New St Andrew's House
Edinburgh

PA97333

THE ANCIENT MONUMENTS AND ARCHAEOLOGICAL AREAS ACT 1979
ENTRY IN THE SCHEDULE OF MONUMENTS

The monument known as Hillhead, long cairn 320m SW of Upper Craighill comprises a neolithic long burial cairn measuring 50m ENE/WSW by up to 22m transversely and an area around it in which traces of activities associated with its use will survive and all within an area measuring 70m ENE/WSW by 30m transversely. The monument, which lies in the Parish of Arbuthnott and the County of Kincardine as shown outlined in red on the Plan annexed and executed as relative hereto and which forms



hereby included in the Schedule of Monuments appearing to the Secretary of State for Scotland to be of national importance compiled and maintained by him under section 1(1) of the Ancient Monuments and Archaeological Areas Act 1979.

Given under the Seal of the Secretary of State for Scotland.



Assistant Secretary
Date 6 July 1988

Scottish Development Department
Historic Buildings and Monuments
20 Brandon Street
Edinburgh
EH3 5RA

Register on behalf of the Secretary of State for Scotland in the Register of the County of Kincardine.



Solicitor, Edinburgh, Agent

KC - 1347

D2100302.048

REGISTERS OF SCOTLAND.

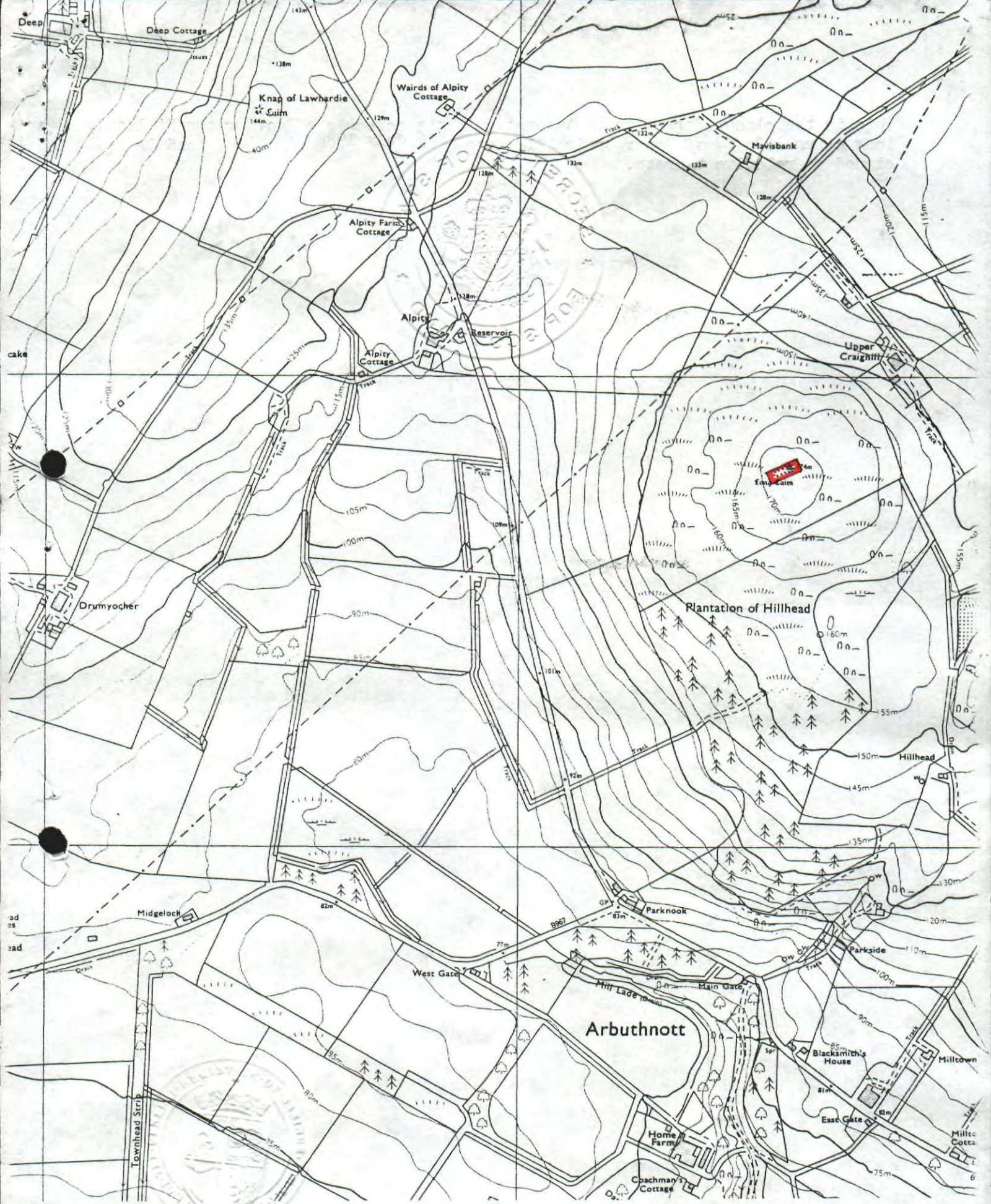
GENERAL REGISTER OF SASINES

CW COUNTY OF KINCARDINE.

Book 1347 Folio 179

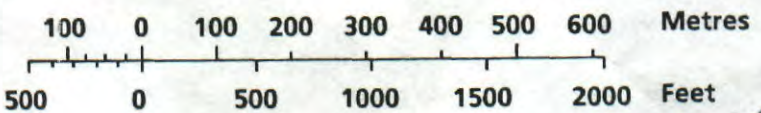
Presented and Recorded on 23 AUG 1988

179



Hillhead, long cairn 320m SW of
Upper Craighill

Scale : 1/10 000



KC - 1347
Arbuthnott Parish

Sheet NO 77 NE

180
© Crown copyright reserved