

no e/1977
639

THE ANCIENT MONUMENTS AND
ARCHAEOLOGICAL AREAS ACT 1979

Amended Entry in the Schedule of
Monuments

1998

Re: The Monument known as Byreclough,
farmstead and cultivation remains 300m
SSW of

in the Parish of Longformacus and
County of Berwick

Search Sheet No: 170

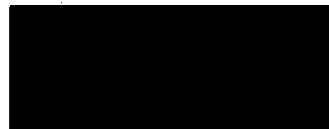
Solicitor
to the Secretary of State
for Scotland
Victoria Quay
Edinburgh

MFA04978

THE ANCIENT MONUMENTS AND ARCHAEOLOGICAL AREAS ACT 1979
AMENDED ENTRY IN THE SCHEDULE OF MONUMENTS

The entry in the Schedule of monuments appearing to the Secretary of State for Scotland to be of national importance compiled and maintained by him under section 1(1) of the above Act in respect of the monument known as Byrecleugh, farmstead and cultivation remains 300m SSW of, dated 24 March 1988 and recorded in the Division of the General Register of Sasines for the County of Berwick on 6 January 1989 is hereby in accordance with the provisions of section 1(5) of the above Act amended to describe the area of the scheduled monument as being irregular in shape with maximum dimensions of 125m NW-SE by 70m NE-SW, bounded on the N by the Dye Water and on the SE by the Hall Burn as shown delineated in red on the plan annexed and executed as relative hereto. The modern field boundaries are excluded.

Given under the Seal of the Secretary of State for Scotland

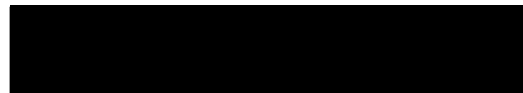


Assistant Secretary

Date 23 February 1998

Historic Scotland
Longmore House
Salisbury Place
EDINBURGH
EH9 1SH

Register on behalf of the Secretary of State for Scotland in the Register of the County of Berwick.



Solicitor, Edinburgh, Agent

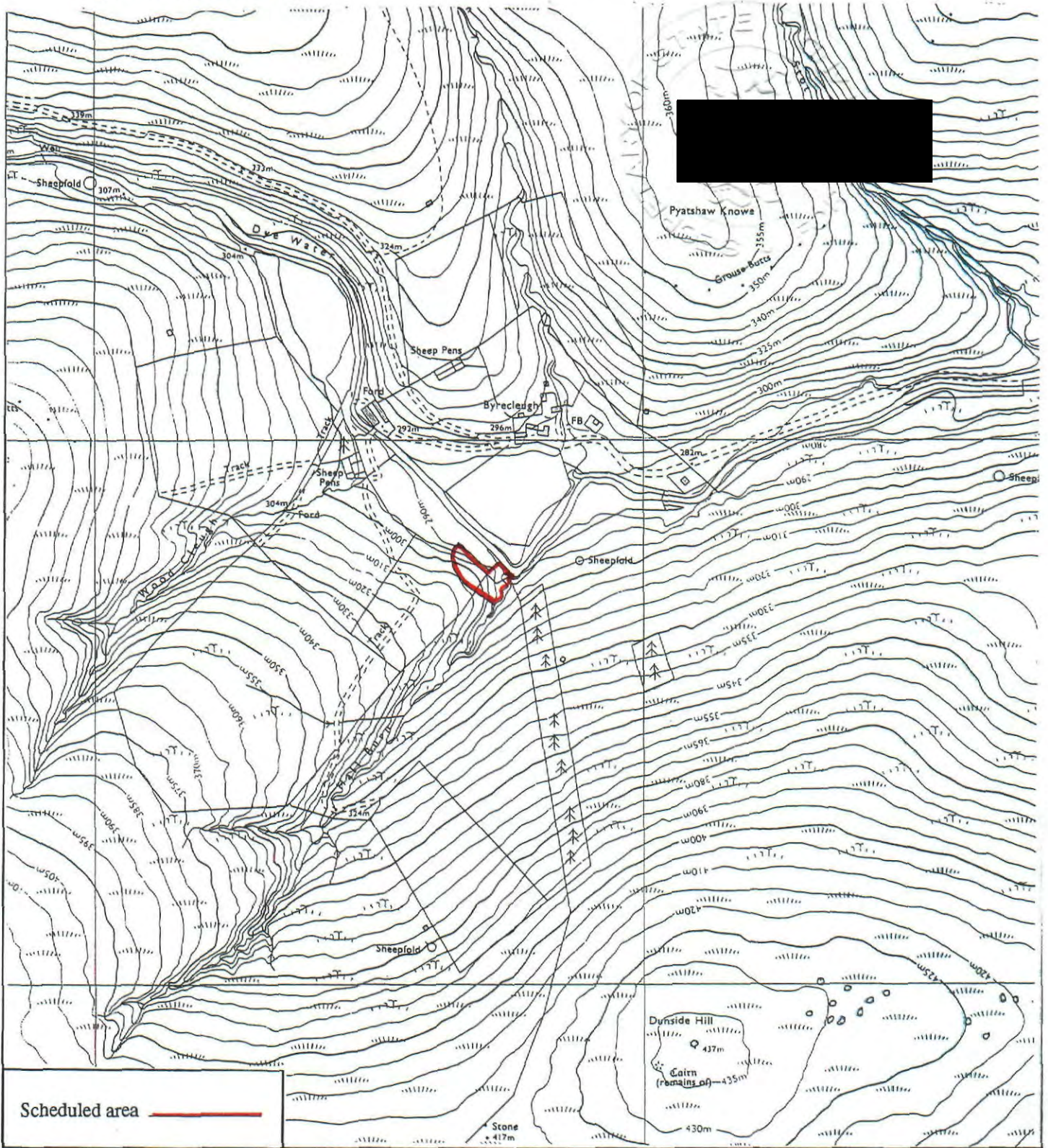
MFA05178

REGISTERS OF SCOTLAND
GENERAL REGISTER OF SASINES
COUNTY OF BERWICK
FICHE 50 FRAME 11
PRESENTED & RECORDED ON

BER 98 50

19 MAY 1998

This is the plan referred to in the amended entry in the Schedule affecting Byrecleugh, farmstead and cultivation remains 300m SSW of, dated 23 February 1998 and is signed as relative thereto.



<p>Byrecleugh, farmstead and cultivation remains 300m SSW of</p> <p>Longformacus Parish</p>	<p style="text-align: center;">↑ N</p> <p style="text-align: center;">Sheet: NT65NW</p>	<p style="text-align: right;">Scale 1:10,000</p> <p style="text-align: center;"> 500 0 100 200 300 Metres 500 0 500 1000 Feet </p> <p style="text-align: right;">© Crown copyright reserved</p>
---	---	---