

V200

THE ANCIENT MONUMENTS AND
ARCHAEOLOGICAL AREAS ACT 1979

Entry in the Schedule of Monuments

2002

7

Re: The Monument known as
Capo Plantation, long barrow

~~9~~

in the Parish of Fettercairn and
County of Kincardine

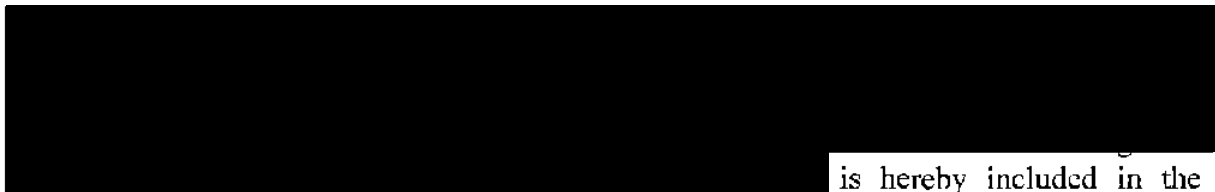
Search Sheet No: 2782

Historic Scotland
Longmore House
Salisbury Place
Edinburgh

4444

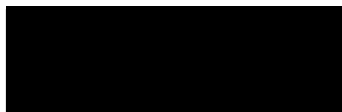
THE ANCIENT MONUMENTS AND ARCHAEOLOGICAL AREAS ACT 1979
ENTRY IN THE SCHEDULE OF MONUMENTS

The monument known as Capo Plantation, long barrow comprises a long barrow and mound, visible as upstanding grass-covered mounds. Sites of this type are burial mounds and may be expected to contain evidence of burials, occasionally set within internal mortuary structures. The area to be scheduled comprises the remains described and an area around them within which related material may be expected to survive. It is trapezoidal in shape, with maximum dimensions of 218m E-W by 105m N-S. It is defined by the outer edge of the enclosure ditch on the N, S and E sides and by the outer edge of the enclosure bank on the W side. The monument, which lies in the Parish of Fettercairn and the County of Kincardine as shown outlined in red on the Plan annexed and executed as relative hereto



is hereby included in the Schedule of Monuments appearing to the Scottish Ministers to be of national importance compiled and maintained by them under section 1(1) of the Ancient Monuments and Archaeological Areas Act 1979.

Subscribed by Owen Kelly, Director, Properties in Care with Historic Scotland, being an officer of the Scottish Ministers at Edinburgh on the 22nd day of March Two thousand and two, before this witness Lesley Macdonald, of Longmore House, Salisbury Place, Edinburgh.



Witness



Director, Properties in Care

Register on behalf of the Scottish Ministers in the Register of the County of Kincardine.



An Officer of the Scottish Ministers

KNC 02 - 61

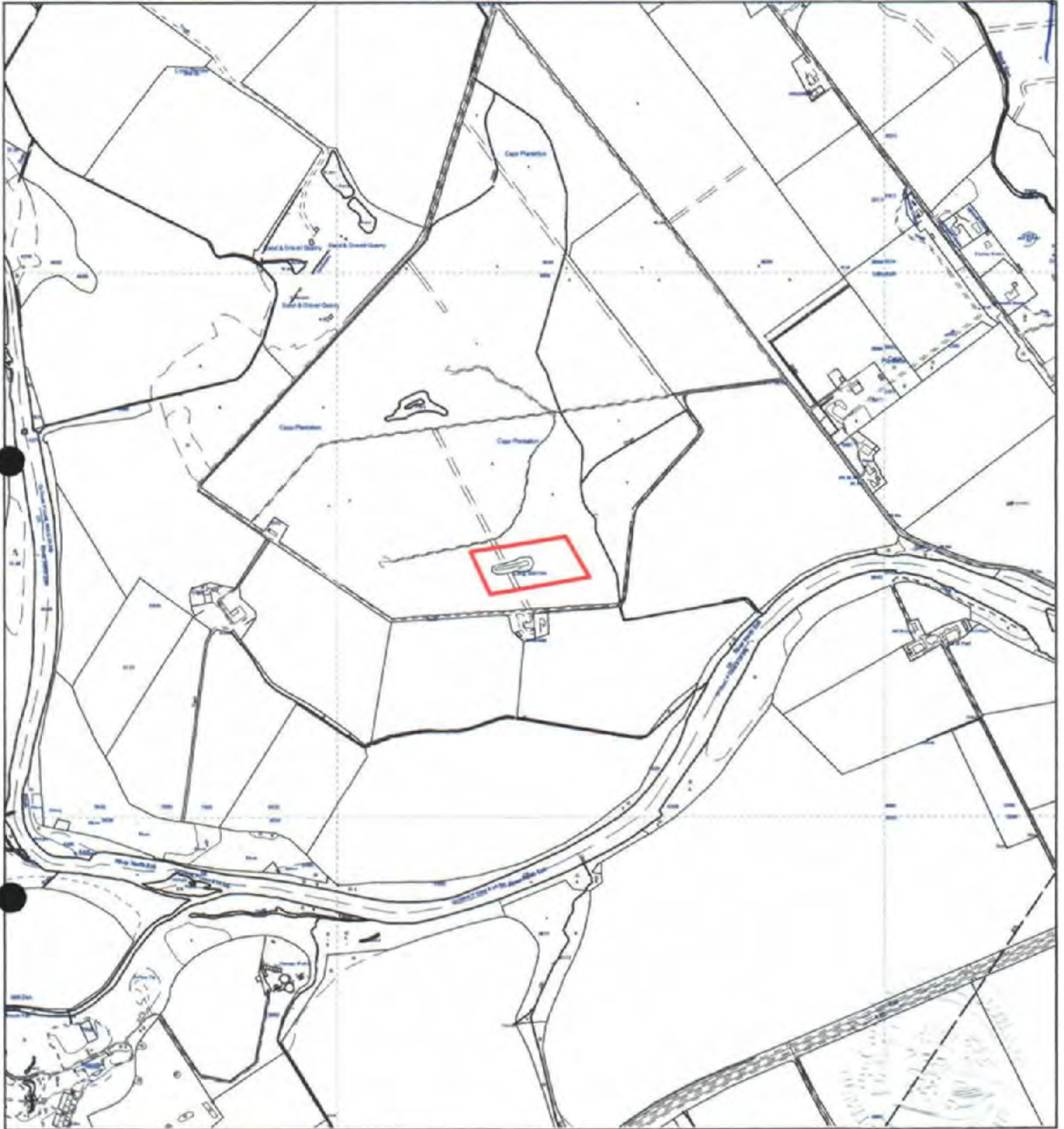
MFA10364

REGISTERS OF SCOTLAND
GENERAL REGISTER OF SASINES
COUNTY OF KINCARDINE
FICHE 61 FRAME 11
PRESENTED AND RECORDED ON

19 JUN 2002

11

This is the plan referred to in the entry in the Schedule affecting
Capo Plantation, long barrow,
dated: 22 March 2002 and is signed as relative thereto.



Capo Plantation, long barrow

Fettercairn Parish

Scheduled Area



MapSheet: NO66NW

Scale 1:10,000

100 0 100 200 300 400 500 Meters

This map is reproduced from the OS map by Historic Scotland with the permission of The Controller of Her Majesty's Stationery Office. © Crown copyright. Unauthorised reproduction infringes Crown Copyright and may lead to prosecution or civil proceedings. Licence No. GD 03135G0014.

KNC 02 - 61

12