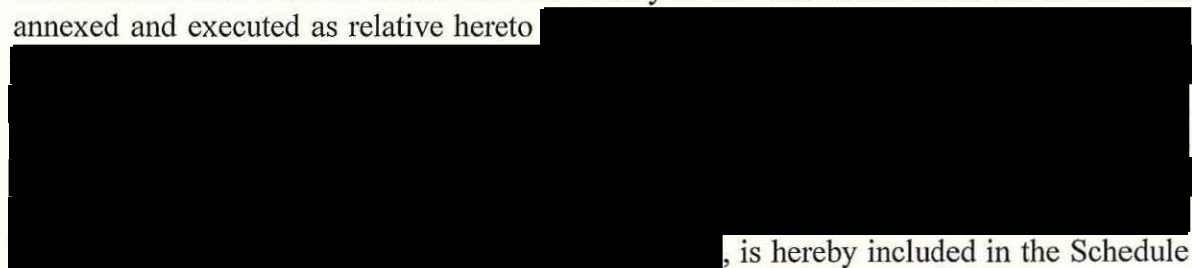


THE ANCIENT MONUMENTS AND ARCHAEOLOGICAL AREAS ACT 1979 4035  
ENTRY IN THE SCHEDULE OF MONUMENTS

The monument known as **Thirlestane Castle, old castle 510m SSW of Thirlestane** comprises the remains of Old Thirlestane Castle and an area around it where associated buildings and enclosures formerly stood. The castle dates probably from the 13<sup>th</sup> to 16<sup>th</sup> centuries. It comprises an oblong tower with a secondary stair block to the SW. The S wall of the tower and the stair block survive as unroofed structures, standing two to three storeys high. To the W of the tower, the footings of two near-parallel building ranges are visible as low, grass-covered banks. To the S of the tower, two sub-rectangular enclosures are visible as low, turf-covered banks, and a larger, irregular enclosure lies N of the tower. A curvilinear bank to the S represents a potential kiln site. The monument stands 190m above sea level, occupying ground that slopes gently to the ESE. It is overlooked from the NW, but stands immediately above a steep scarp down to the Boondreigh Water, which lies about 200m to the ESE. The scheduled area is irregular on plan, to include the remains described above and an area around them in which evidence for the monument's construction, use and abandonment is expected to survive. On the W side, the scheduling extends up to but excludes a drystone dyke with post-and-wire fence. The monument, which lies in the Parish of Lauder and the County of Berwick as shown in red on the Plan annexed and executed as relative hereto



, is hereby included in the Schedule of Monuments appearing to the Scottish Ministers to be of national importance compiled and maintained by them under section 1(1) of the Ancient Monuments and Archaeological Areas Act 1979.

This entry supersedes the Entry in the Schedule of Monuments for the monument known then as **Old Thirlestane Castle** dated 31 December 1977.

Subscribed by Olwyn A Owen, Head of Scheduling, Marine and Battlefields with Historic Scotland, being an officer of the Scottish Ministers at Edinburgh on the **31** day of *August* Two thousand and fifteen, before this witness Christine Kelly, of Longmore House, Salisbury Place, Edinburgh.



Head of Scheduling, Marine and Battlefields

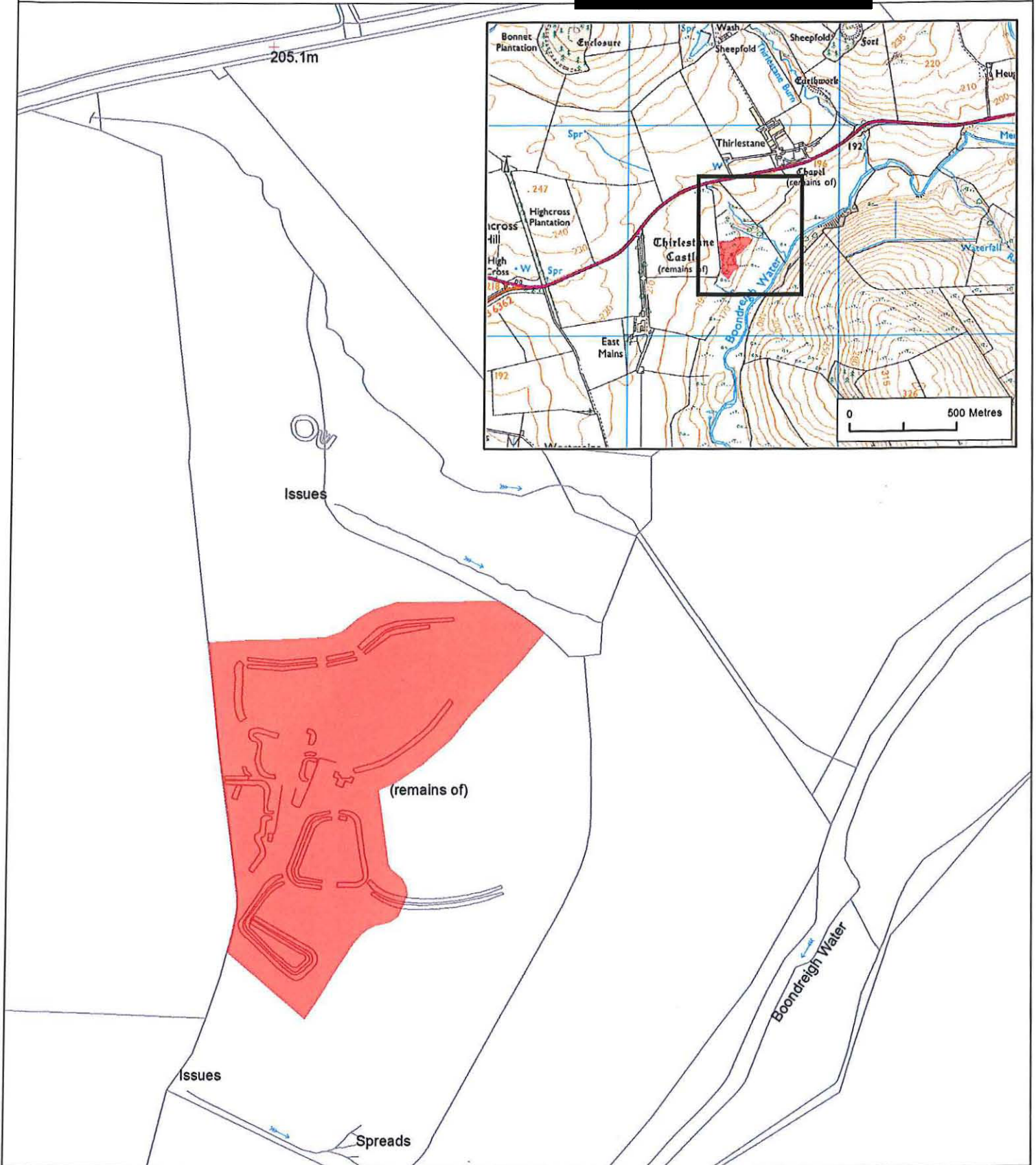
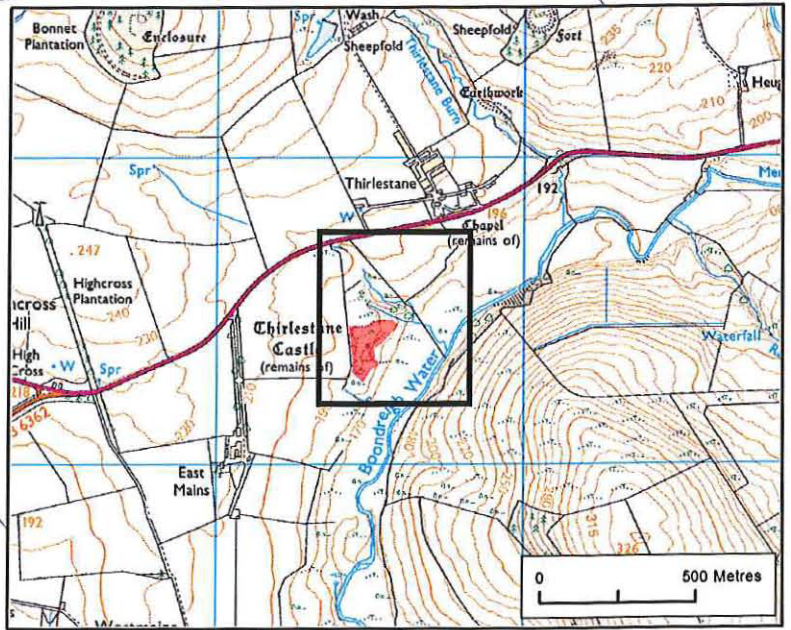


Witness

This is the plan referred to in the entry in the Schedule affecting:

Thirlestane Castle, old castle 510m SSW of Thirlestane

dated: 311 8 115 and is signed as relative thereto.



Designation Reference: SM4035  
Thirlestane Castle, old castle 510m  
SSW of Thirlestane

Parish: LAUDER

Scheduled Area 



Map Sheet:  
NT54NE

Scale: 1:2,500



This map is reproduced from Ordnance Survey material with the permission of Ordnance Survey on behalf of the Controller of Her Majesty's Stationery Office © Crown copyright. Unauthorised reproduction infringes Crown copyright and may lead to prosecution or civil proceedings. Historic Scotland Licence No. 100017509 (2015). You are not permitted to copy, sub-licence, distribute or sell any of this data to third parties in any form.

THE ANCIENT MONUMENTS AND  
ARCHAEOLOGICAL AREAS ACT 1979

Entry in the Schedule of Monuments

2015

Re: The Monument known as  
**Thirlestane Castle, old castle**  
**510m SSW of Thirlestane**

in the Parish of Lauder and  
County of Berwick

Search Sheet No: 5415

Historic Scotland  
Longmore House  
Salisbury Place  
Edinburgh