

THE ANCIENT MONUMENTS AND ARCHAEOLOGICAL AREAS ACT 1979 3569  
ENTRY IN THE SCHEDULE OF MONUMENTS

The monument known as Beorgs of Housetter, chambered cairn 730m NW of Setter House comprises a heel-shaped chambered cairn of the Neolithic period, built probably between 4000 and 2500 BC. It is visible as an upstanding stone-built structure with large facing stones. The cairn measures around 5.5m NW-SE by 5m transversely and stands 0.6m high. Its concave façade is well defined, largely intact and faces southeast. The entrance to the passage is 0.4m wide and is set slightly off-centre in the façade. The passage is 1.5m long and runs NW-SE before joining the exposed chamber, which has an unusual slightly irregular elongated plan. The walls of the chamber stand up to 1m high and are constructed of large flat-topped boulders, which would have supported the now absent capstone. Other large boulders occur in the façade, with smaller stones forming the kerbing around the sides and back of the cairn, which has the effect of heightening the overall impressive visual impact of the façade. The cairn stands 90m above sea level on the rocky steep-sided slope of the Beorgs of Housetter, above and slightly WSW of Trowie Knowe, and overlooking the Loch of Housetter 250m to the east. The area to be scheduled is circular on plan with a diameter of 20m and is centred on the monument. The scheduling includes the remains described above and an area around them within which evidence relating to the monument's construction, use and abandonment may survive. The monument, which lies in the Parish of Northmavine and the County of Orkney and Zetland as shown in red on the Plan annexed and executed as relative hereto

[REDACTED], is hereby included in the Schedule of Monuments appearing to the Scottish Ministers to be of national importance compiled and maintained by them under section 1(1) of the Ancient Monuments and Archaeological Areas Act 1979.

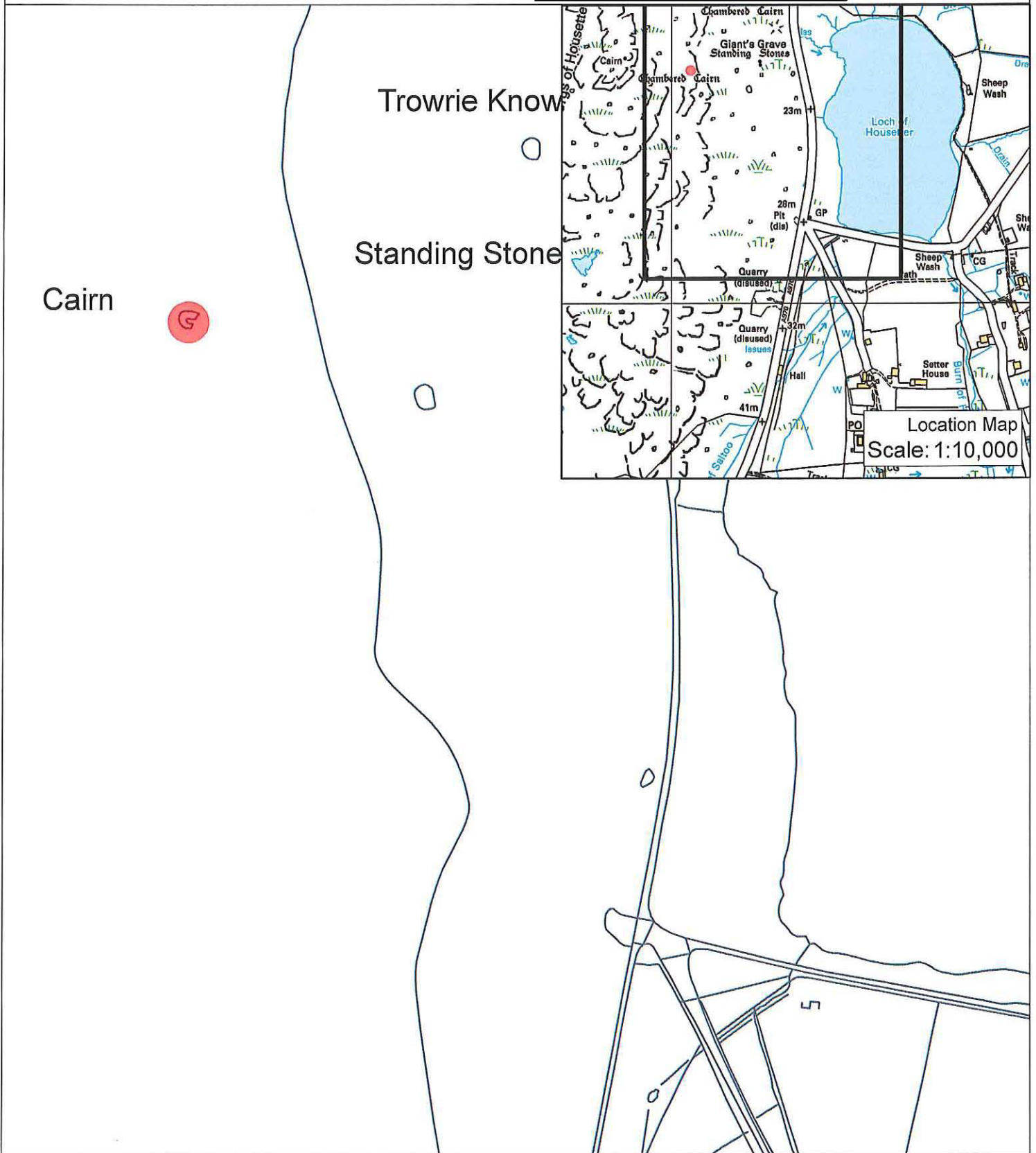
Subscribed by Barbara Cummins, Director of Heritage Management with Historic Scotland, being an officer of the Scottish Ministers at Edinburgh on the 7<sup>th</sup> day of June Two thousand and twelve, before this witness Victoria Murray, of Longmore House, Salisbury Place, Edinburgh.

[REDACTED] Witness

[REDACTED] Director of Heritage Management

This is the plan referred to in the entry in the Schedule affecting:  
Beorgs of Housette, chambered cairn 730m NW of Setter House

dated: 716 112 and is signed as relative thereto. [REDACTED]



Index No: 3569

Beorgs of Housette, chambered cairn  
730m NW of Setter House

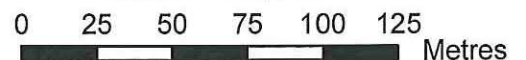
Northmavine Parish

Scheduled Area 



Mapsheet(s):  
HU38NE

Scale: 1:2,500



This map is reproduced from Ordnance Survey material with the permission of Ordnance Survey on behalf of the Controller of Her Majesty's Stationery Office © Crown copyright. Unauthorised reproduction infringes Crown copyright and may lead to prosecution or civil proceedings. Historic Scotland Licence No. 100017509 [2012].

THE ANCIENT MONUMENTS AND  
ARCHAEOLOGICAL AREAS ACT 1979

Entry in the Schedule of Monuments

2012

Re: The Monument known as  
Beorgs of Housetter, chambered cairn  
730m NW of Setter House

in the Parish of Northmavine and  
County of Orkney and Zetland

Search Sheet No: 415

Historic Scotland  
Longmore House  
Salisbury Place  
Edinburgh