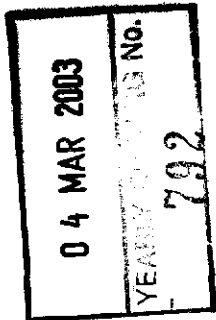


~~PS~~ Pth

THE ANCIENT MONUMENTS AND
ARCHAEOLOGICAL AREAS ACT 1979



Entry in the Schedule of Monuments

5

SC0000
832553109001

2003

Re: The Monument known as
Clach na Tiompan, long cairn,
standing stone and cairn

in the Parish of Monzievaird and Strowan
and
County of Perth

Search Sheet No: 5417 and 43008

Historic Scotland
Longmore House
Salisbury Place
Edinburgh

THE ANCIENT MONUMENTS AND ARCHAEOLOGICAL AREAS ACT 1979
ENTRY IN THE SCHEDULE OF MONUMENTS

The monument known as Clach na Tiompan, long cairn, standing stone and cairn, comprises a chambered cairn of prehistoric date, visible as a stony mound, and the remains of a small circle of standing stones enclosing a small cairn. The monument is situated some 9km from the head of Glen Almond, on a terrace 15m above the northern bank of the River Almond. The area to be scheduled comprises two discrete areas. The area around the chambered cairn is irregular, with maximum dimensions of 80m NW-SE by 36m transversely, to include the upstanding cairn and an area around it within which related evidence is likely to survive. The area around the stone circle is a circle, 15.5m in diameter. The top 20cm of the track (which runs SW of the chambered cairn and N of the stone circle) is excluded from the scheduling to allow for routine maintenance. The monument, which lies in the Parish of Monzievaird and Strowan and the County of Perth as shown outlined in red on the Plan annexed and executed as relative hereto and



is hereby included in the Schedule of Monuments appearing to the Scottish Ministers to be of national importance compiled and maintained by them under section 1(1) of the Ancient Monuments and Archaeological Areas Act 1979.

Subscribed by Sheenagh Adams, Director of Heritage Policy with Historic Scotland, being an officer of the Scottish Ministers at Edinburgh on the 14th day of February Two thousand and three, before this witness Lesley Macdonald, of Longmore House, Salisbury Place, Edinburgh.

REGISTERS OF SCOTLAND
GENERAL REGISTER OF SASINES
COUNTY OF PERTH
FICHE 43 FRAME 24
PRESENTED AND RECORDED ON 04 MAR 2003

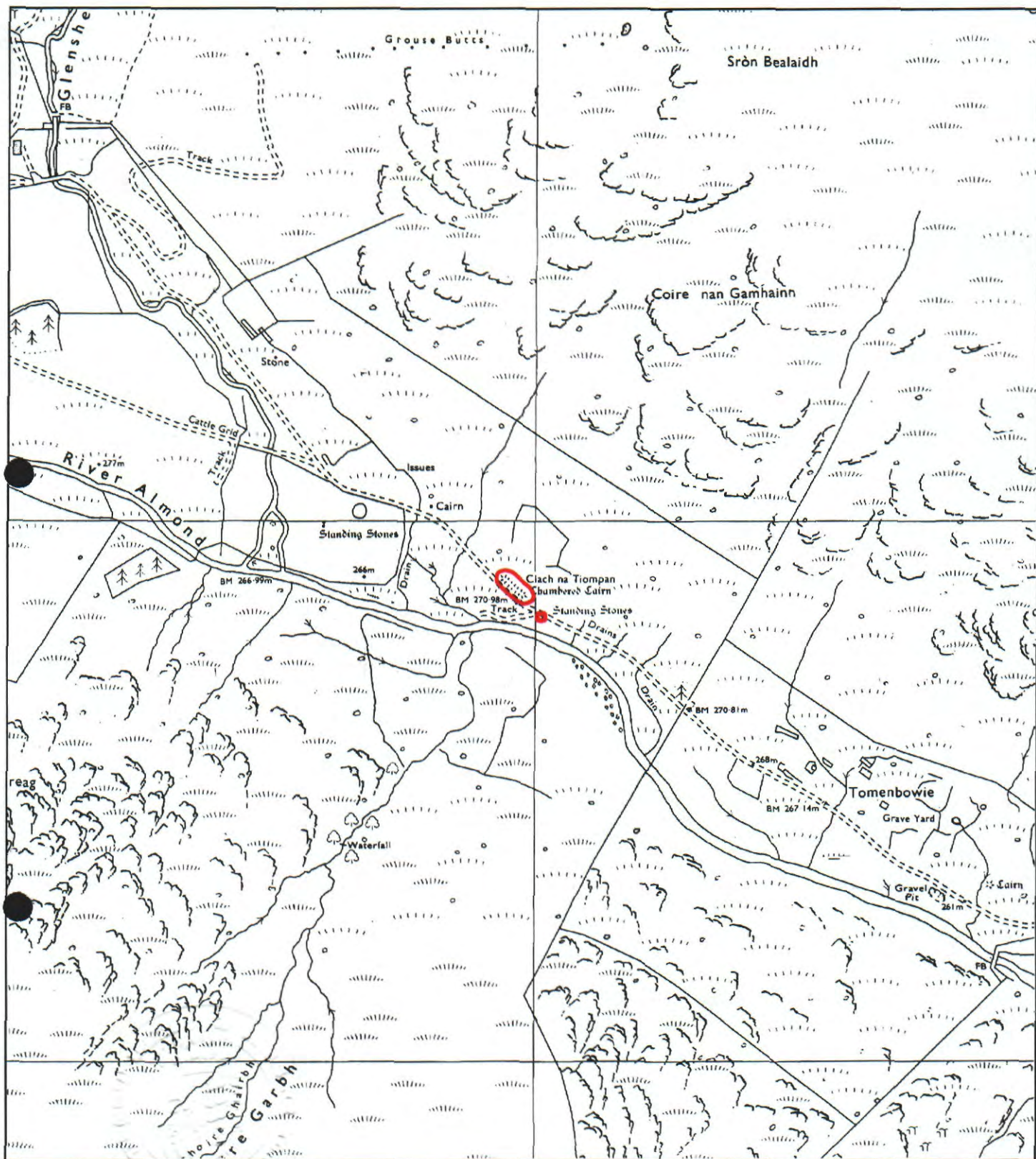


Director of Heritage Policy

Register on behalf of the Scottish Ministers in the Register of the County of Perth.

An Officer of the Scottish Ministers

This is the plan referred to in the entry in the Schedule affecting Clach na Tiompan, long cairn, standing stone and cairn, dated: 4/2/03 and is signed as relative thereto.



Clach na Tiompan, long cairn,
standing stone and cairn

Monzievaird and Strowan Parish

Scheduled Area



MapSheet: NN83SW

Scale 1:10,000

100 0 100 200 300 400 500 Meters

This map is reproduced from the OS map by Historic Scotland with the permission of The Controller of Her Majesty's Stationery Office, © Crown copyright. Unauthorised reproduction infringes Crown Copyright and may lead to prosecution or civil proceedings. Licence No. GD 03135G0014.