

2

THE ANCIENT MONUMENTS AND
ARCHAEOLOGICAL AREAS ACT 1979

11552
2 APR
763
C£22.00
EW

Entry in the Schedule of Monuments

1995

Re: The Monument known as
Crofts Mote, fort

in the Parish of Crossmichael and
County of Stewartry of Kirkcudbright

[Handwritten signature]

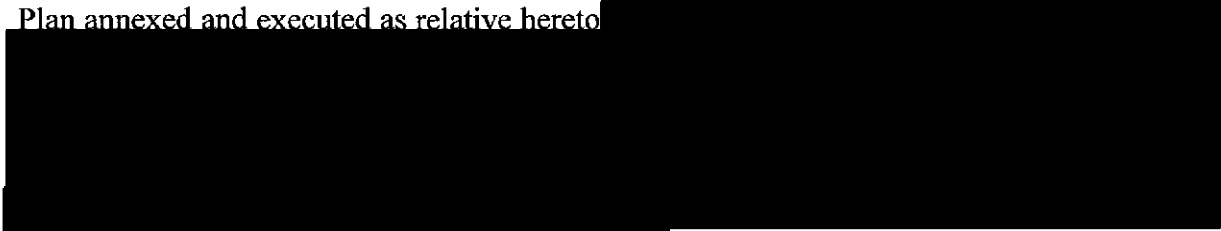
Search Sheet No: 11552

Solicitor
to the
Secretary of State
for Scotland
New St Andrew's House
Edinburgh

11552 7333

THE ANCIENT MONUMENTS AND ARCHAEOLOGICAL AREAS ACT 1979
ENTRY IN THE SCHEDULE OF MONUMENTS

The monument known as Crofts Mote, fort comprises of a small hilltop fort, probably of Iron Age date. The area to be scheduled is an oval measuring 140m NNW-SSE by 95m, to include the fort and its enclosing banks. The monument, which lies in the Parish of Crossmichael and the County of Stewartry of Kirkcudbright as shown outlined in red on the Plan annexed and executed as relative hereto



is hereby included in the Schedule of Monuments appearing to the Secretary of State for Scotland to be of national importance compiled and maintained by him under section 1(1) of the Ancient Monuments and Archaeological Areas Act 1979.

Given under the Seal of the Secretary of State for Scotland.



Assistant Secretary
Date 10 MARCH 1995

Historic Scotland
Longmore House
Salisbury Place
EDINBURGH
EH9 1SH

Register on behalf of the Secretary of State for Scotland in the Register of the County of Stewartry of Kirkcudbright.



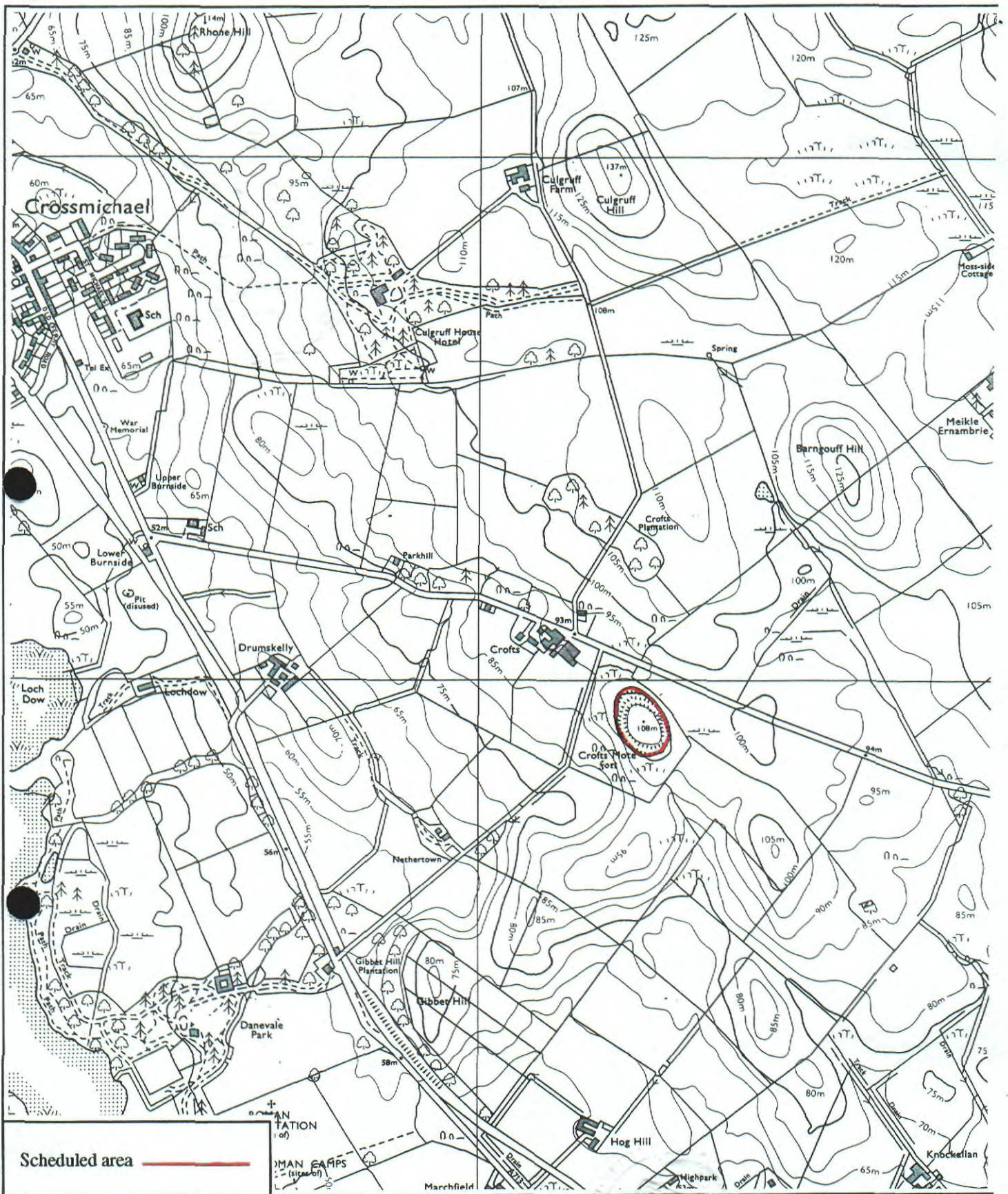
Solicitor, Edinburgh, Agent

MFA03744

KRK 9 5 91

M
REGISTERS OF SCOTLAND
GENERAL REGISTER OF SASINES
COUNTY OF THE STEWARTRY OF KIRKCUDBRIGHT
Fiche 91 Frame 14
Presented and Recorded on .. 26 APR 1995 ..

14



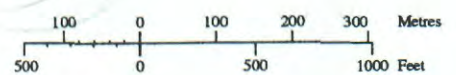
Crofts Mote, fort

Crossmichael Parish



Sheet: NX76NW

Scale 1:10,000



© Crown copyright reserved