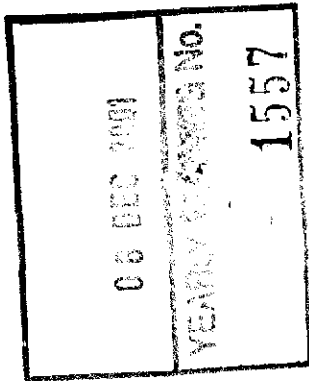


KNC



THE ANCIENT MONUMENTS AND
ARCHAEOLOGICAL AREAS ACT 1979

Entry in the Schedule of Monuments

2

2001

Re: The Monument known as
Eslie, stone circle 730m S of

in the Parish of Banchory-Ternan and
County of Kincardine

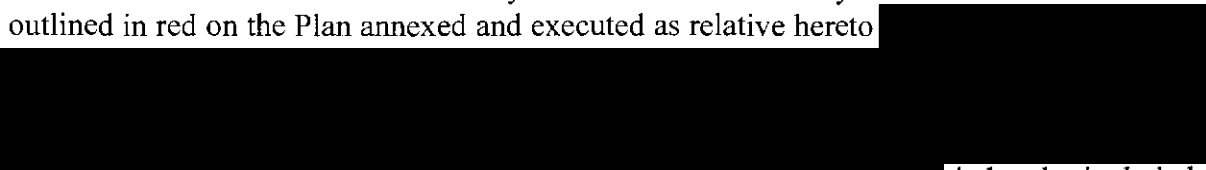
Search Sheet No: 11814 (2 S of S)

Historic Scotland
Longmore House
Salisbury Place
Edinburgh

MFA15189

THE ANCIENT MONUMENTS AND ARCHAEOLOGICAL AREAS ACT 1979
ENTRY IN THE SCHEDULE OF MONUMENTS

The monument known as Eslie, stone circle 730m S of comprises the remains of a recumbent stone circle enclosing a ring cairn and is located 730m S of Eslie on a gentle north west facing slope. The circle measures approximately 22.5m in diameter and there are five upright stones from a probable total of nine, and the recumbent along with its flankers lie on the south side. The ring-cairn measures 17.7m in diameter over all by 0.5m in maximum height and encloses a central court 6m in diameter; at least eleven outer kerbstones and twelve inner kerbstones (up to 0.6m high) are visible. The area to be scheduled is a circle 50m in diameter centred on the centre of the circle, to include the remains of the stone circle and ring cairn, and an area around in which traces of activities associated with the construction and use of the monument may survive. The monument, which lies in the Parish of Banchory-Ternan and the County of Kincardine as shown outlined in red on the Plan annexed and executed as relative hereto



is hereby included in the Schedule of Monuments appearing to the Scottish Ministers to be of national importance compiled and maintained by them under section 1(1) of the Ancient Monuments and Archaeological Areas Act 1979.

Subscribed by Frank James Lawrie, Director of Heritage Policy with Historic Scotland, being an officer of the Scottish Ministers at Edinburgh on the 25th day of October Two thousand and one, before this witness Lesley Macdonald, of Longmore House, Salisbury Place, Edinburgh.



Witness



Director of Heritage Policy

Register on behalf of the Scottish Ministers in the Register of the County of Kincardine.



An Officer of the Scottish Ministers

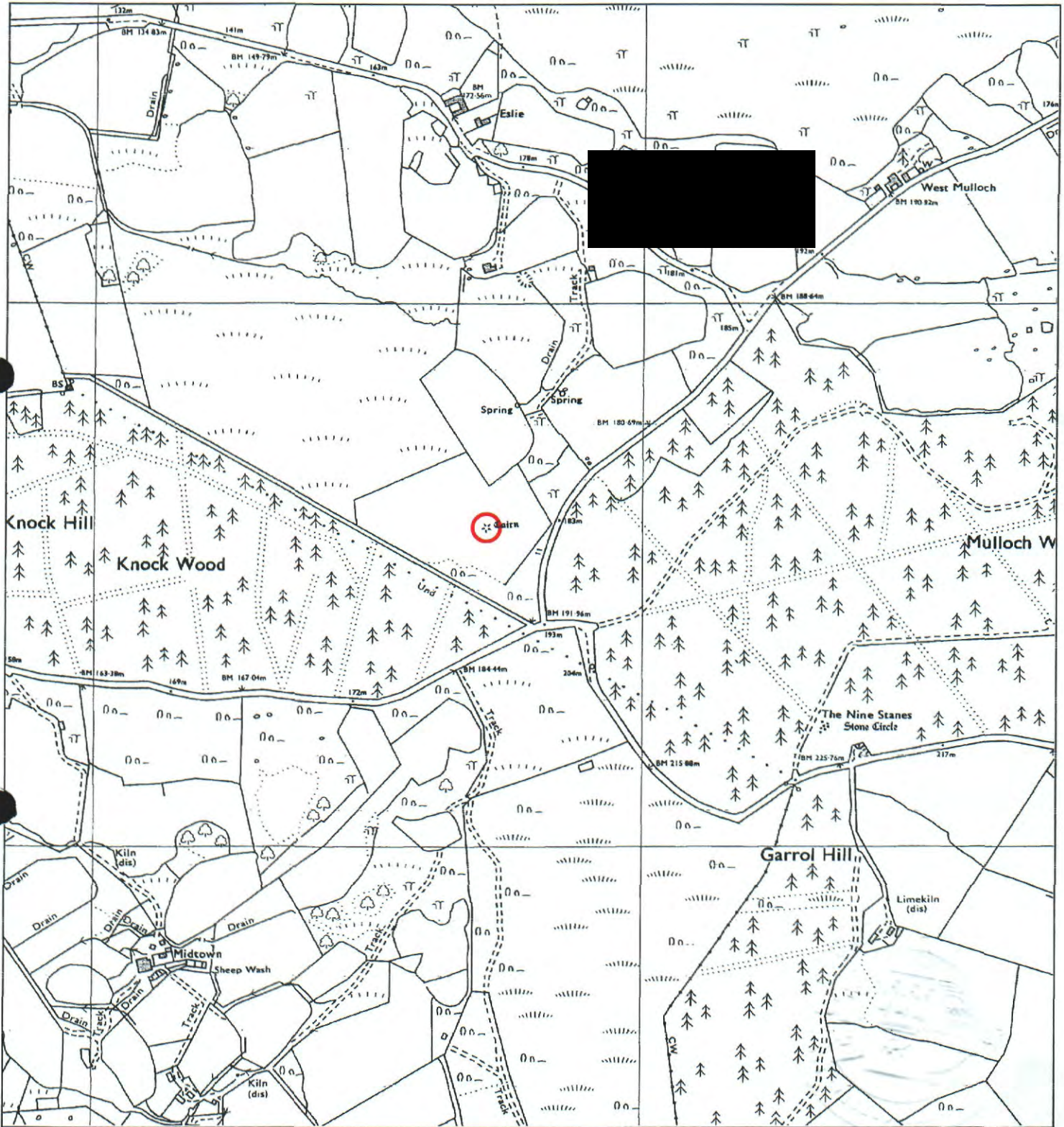
MFA13788

KNC 01 . . . 96

REGISTERS OF SCOTLAND
GENERAL REGISTER OF SASINES
COUNTY OF KINCARDINE
FICHE 96 FRAME 2
PRESENTED & RECORDED ON - 6 DEC 2001

2

This is the plan referred to in the entry in the Schedule affecting
 Eslie, stone circle 730m S of,
 dated: 25 October 2001 and is signed as relative thereto.



Eslie, stone circle 730m S of
 Banchory-Ternan Parish

Scheduled Area



MapSheet: NO79SW

Scale 1:10,000



This map is reproduced from the OS map by Historic Scotland with the permission of The Controller of Her Majesty's Stationery Office, © Crown copyright. Unauthorised reproduction infringes Crown Copyright and may lead to prosecution or civil proceedings. Licence No. GD 03135G0014.