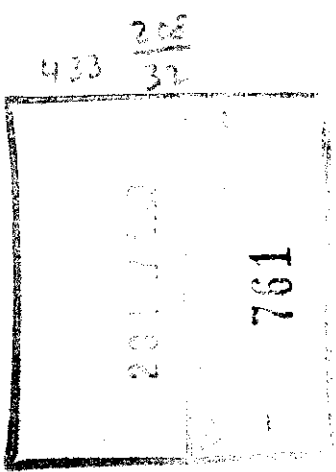


DMF

THE ANCIENT MONUMENTS AND  
ARCHAEOLOGICAL AREAS ACT 1979



Entry in the Schedule of Monuments

4 ~~9~~

2000

Re: The Monument known as  
Lochwood Castle, The Mount, Motte and  
Tower House Complex

in the Parish of Johnstone and  
County of Dumfries

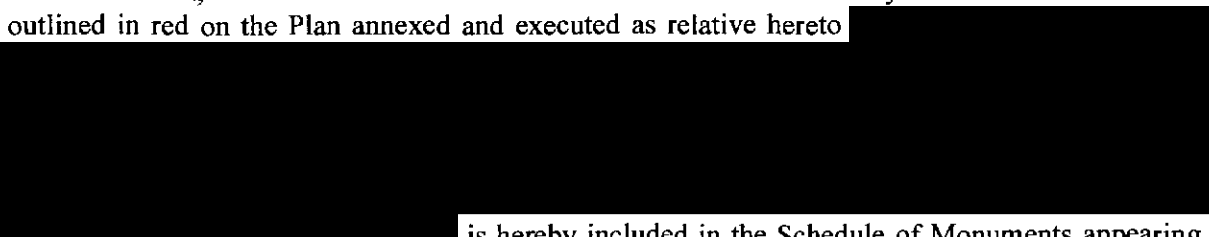
Search Sheet No: 433

Historic Scotland  
Longmore House  
Salisbury Place  
Edinburgh

MFA 10884

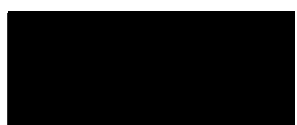
THE ANCIENT MONUMENTS AND ARCHAEOLOGICAL AREAS ACT 1979  
ENTRY IN THE SCHEDULE OF MONUMENTS

The monument known as Lochwood Castle, The Mount, Motte and Tower House Complex comprises a motte-and-bailey castle (commonly called 'the Mount') with a later stone castle situated to the south. The stone castle consists of a large fifteenth century L-planned tower with adjacent courtyard containing ranges of ancillary buildings. The motte-and-bailey castle lies on the E side of a promontory about 600m long and 400m wide which projects northward into Lochwood moss. The motte which is encircled by two terraces, is situated to the N of the site, just outside the confines of the later stone castle. It has been formed by scarping a natural mound which is up to 12m high on the N and E, and up to 6m high on the S and W, its elongated summit measuring 7m from N to S by 4m transversely. To the S of the motte lie the remains of the bailey now occupied and obscured by the stone castle. The tower is constructed of whinstone rubble with dressed red sandstone surrounds to the windows. The main block measures approximately 11m N-S and 13m E-W, while the jamb projects 3m from the southern half of the N elevation, and measures 5m E-W. The entrance is in the re-entrant angle and leads directly to a large turnpike, and a mural passage leading to a prison. The basement is barrel vaulted and is sub-divided into two equal parts by a crosswall. The first floor is similarly sub-divided. The other element of the stone castle consists of two, adjacent quadrilateral enclosures, with an overall measurement of 46m N-S and 29m E-W. The N enclosure has a single range along its N wall which abuts the jamb of the tower house. The area to be scheduled includes the motte, the banks and ditches of the bailey, the Tower house, its enclosures and ranges, and an area around it which has the potential for associated archaeology. The scheduled area is irregular in shape and has maximum dimensions of 150m NNW-SSE and 104m from the easternmost to the westernmost corners. Part of the S and W boundaries of the scheduled area are defined by a modern fence line. The top 50cm of the surface of the roadway within the scheduled area is excluded from the scheduling to enable minor repairs and alterations. The monument, which lies in the Parish of Johnstone and the County of Dumfries as shown outlined in red on the Plan annexed and executed as relative hereto

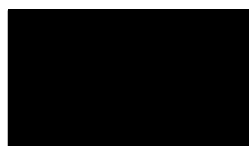


is hereby included in the Schedule of Monuments appearing to the Scottish Ministers to be of national importance compiled and maintained by them under section 1(1) of the Ancient Monuments and Archaeological Areas Act 1979.

Subscribed by Frank James Lawrie, Director of Heritage Policy with Historic Scotland, being an officer of the Scottish Ministers at Edinburgh on the 28<sup>th</sup> day of February Two thousand, before this witness Lesley Macdonald, of Longmore House, Salisbury Place, Edinburgh.



Witness



Director of Heritage Policy

Register on behalf of the Scottish Ministers in the Register of the County of Dumfries.



Solicitor, Edinburgh, Agent  
Historic Scotland

REGISTERS OF SCOTLAND  
GENERAL REGISTER OF BASINES

COUNTY OF DUMFRIES  
FICHE 50 FRAME 6

PRESENTED & RECORDED ON 23 MAY 2000

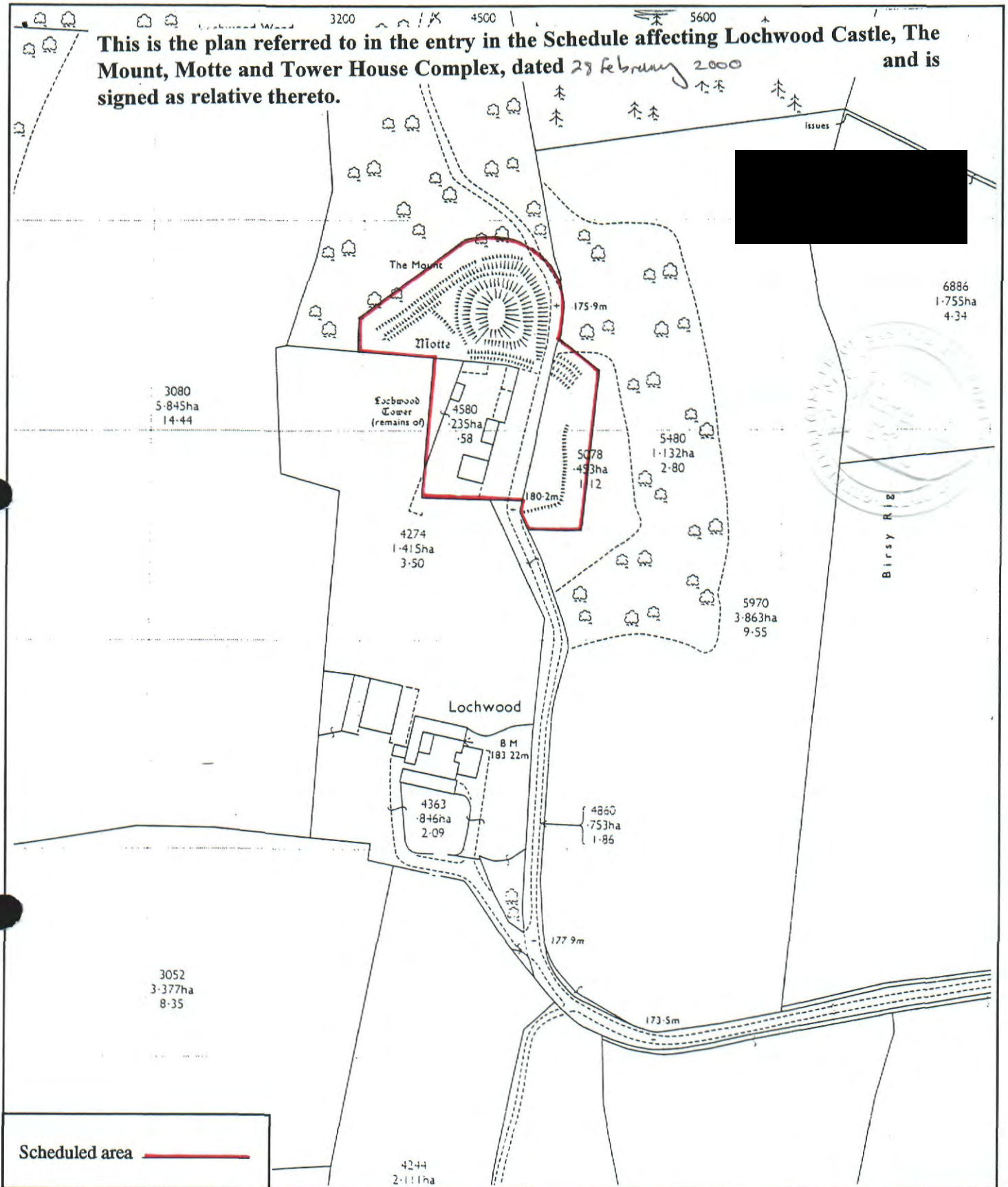
MFA11084

DMF 0 0

5 0

6

This is the plan referred to in the entry in the Schedule affecting Lochwood Castle, The Mount, Motte and Tower House Complex, dated 29 February 2000 and is signed as relative thereto.



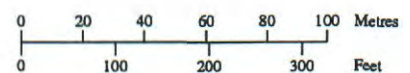
Lochwood Castle, The Mount,  
Motte, and Tower House Complex

Johnstone Parish



Sheet: NY0896

Scale 1:2500



© Crown copyright reserved