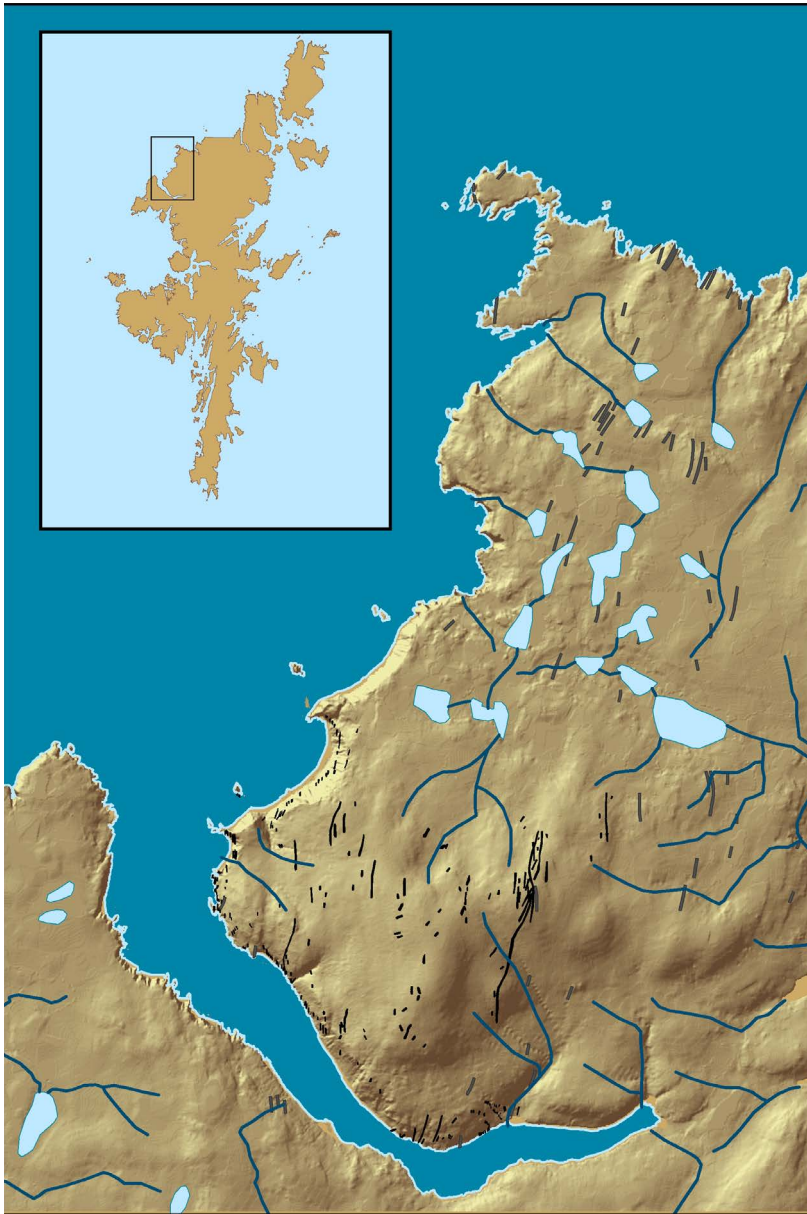




Fig. 1 Looking north along one of the felsite dykes at the Beorgs of Uyea. Inset shows detail of the felsite/granite margin.

Fig. 2 The location of the North Roe quarry complex, with the felsite dykes shown.



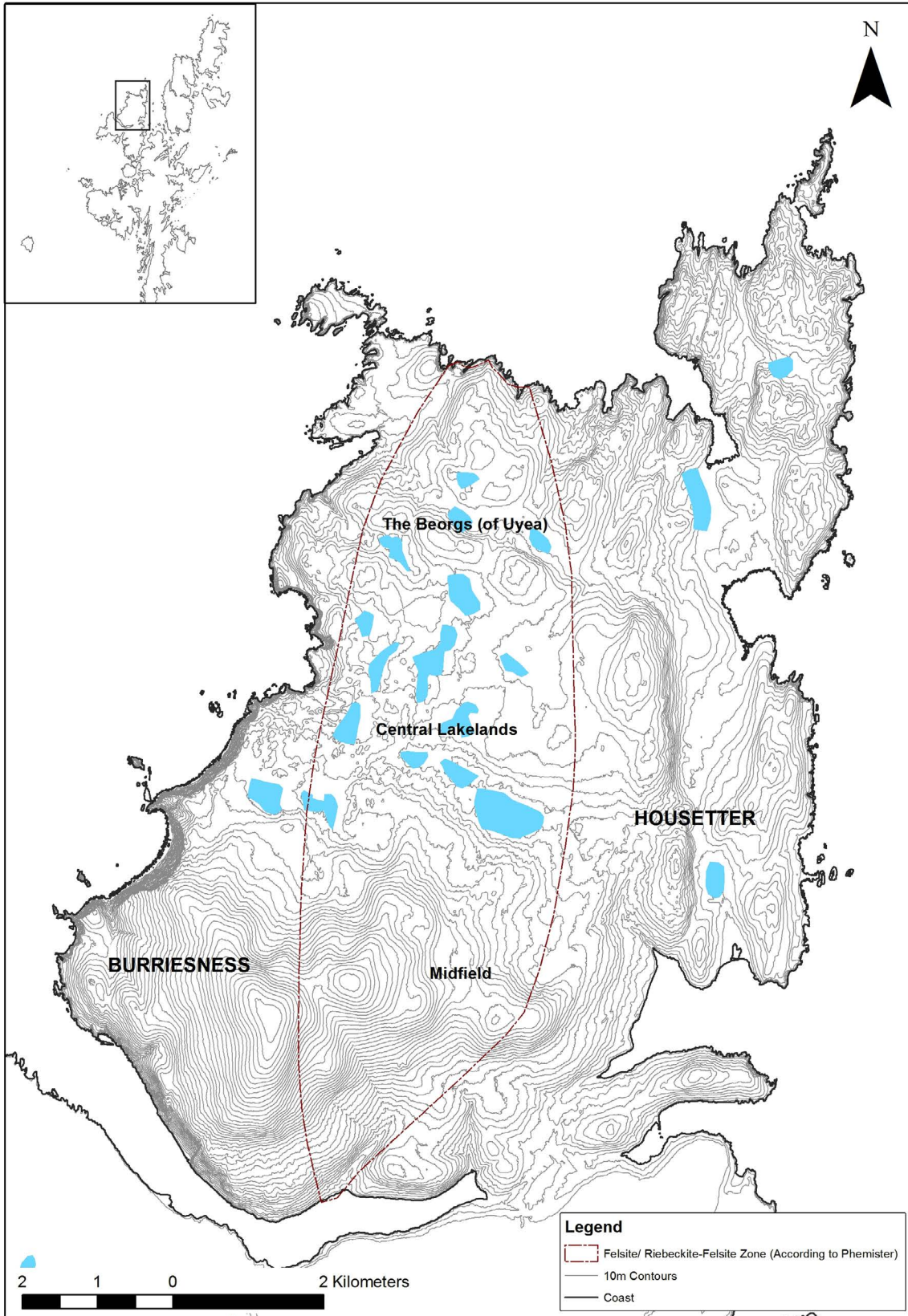


Fig.3 Key areas in the quarry complex. Grut Wells is directly N. of Midfield.

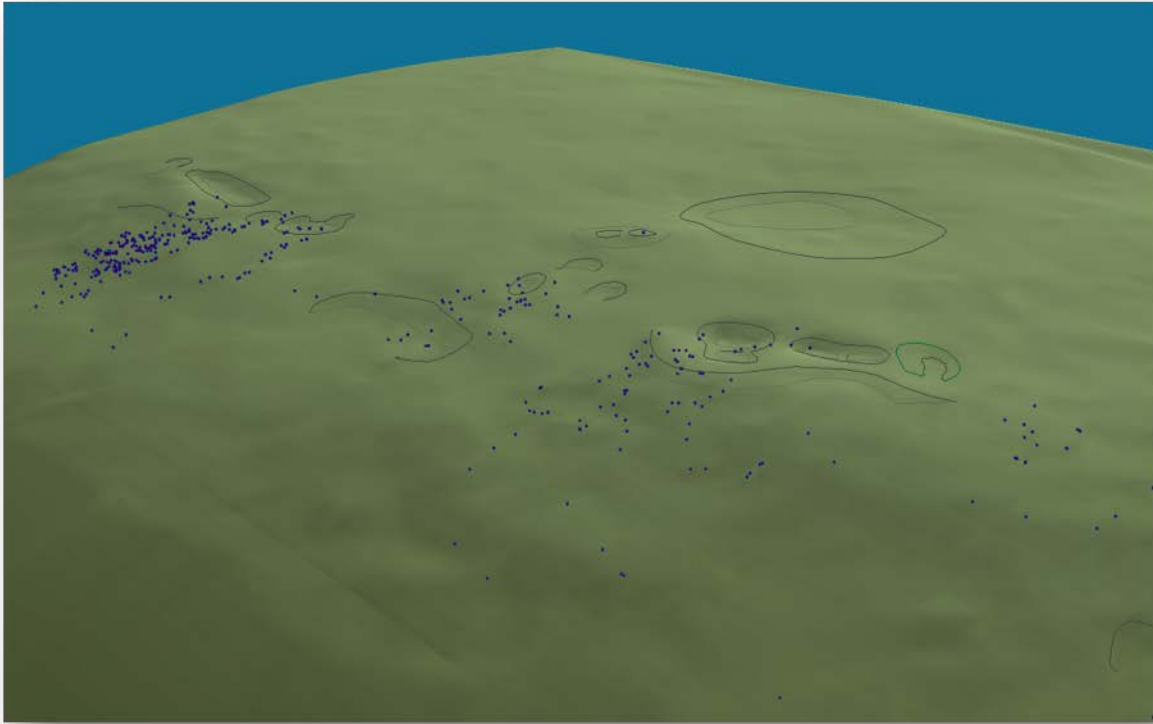


Fig. 4 The survey area at Grut Wells. Quarry pits shown with felsite blocks (blue dots).



Fig. 5. Detail of the quarry pits at Grut Wells, with the location of the excavation trenches shown.



Fig. 6 The freshly exposed quarried felsite dyke in Trench 1.



Fig. 7. Demonstration of felsite knapping at the workshop held in Shetland Museum, Lerwick.

### Groups I, VI and Shetland Axes

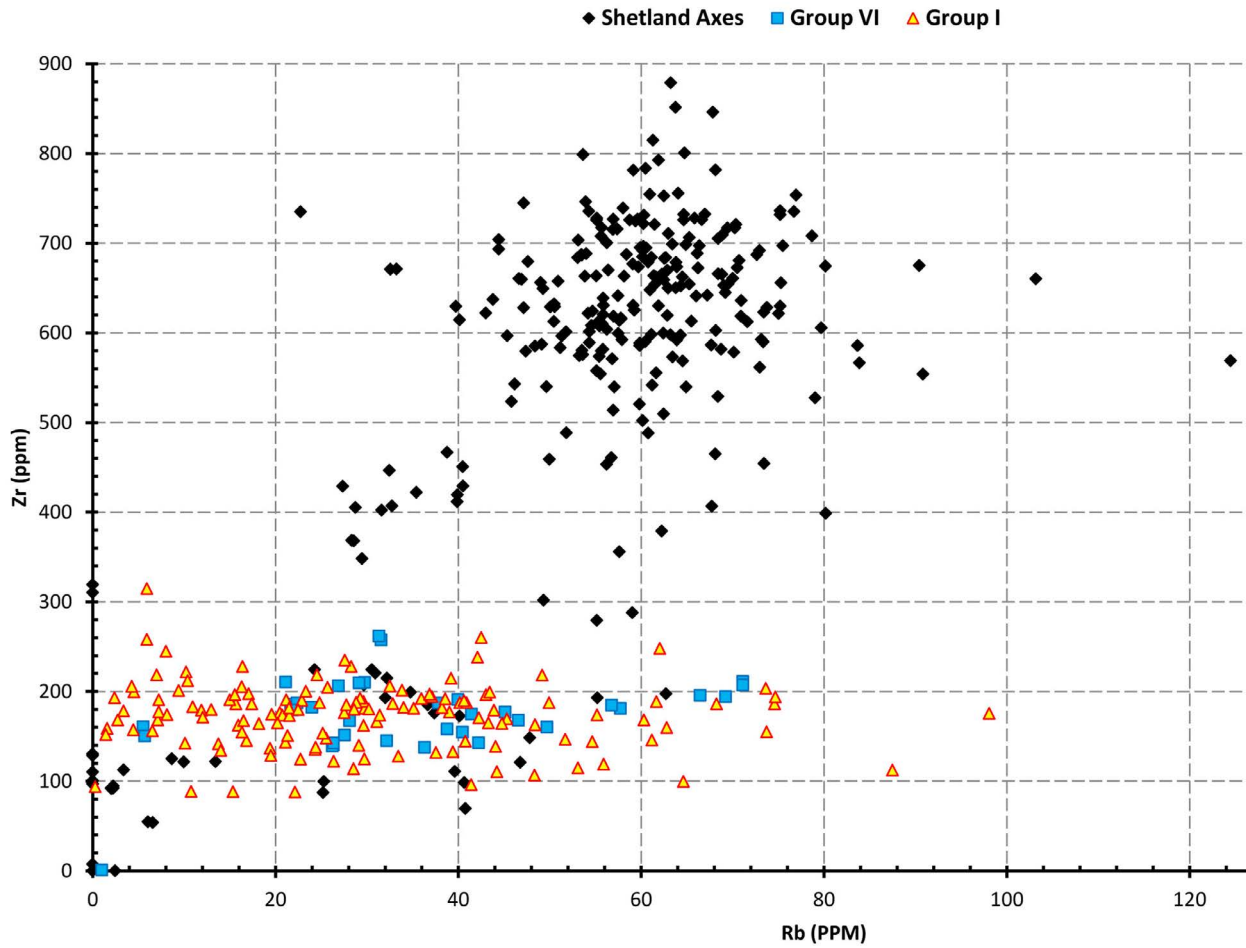


Fig. 8 Geochemistry of felsite axes (Zirconium and Rubidium compared), in comparison with Group 1 and Group VI axes.

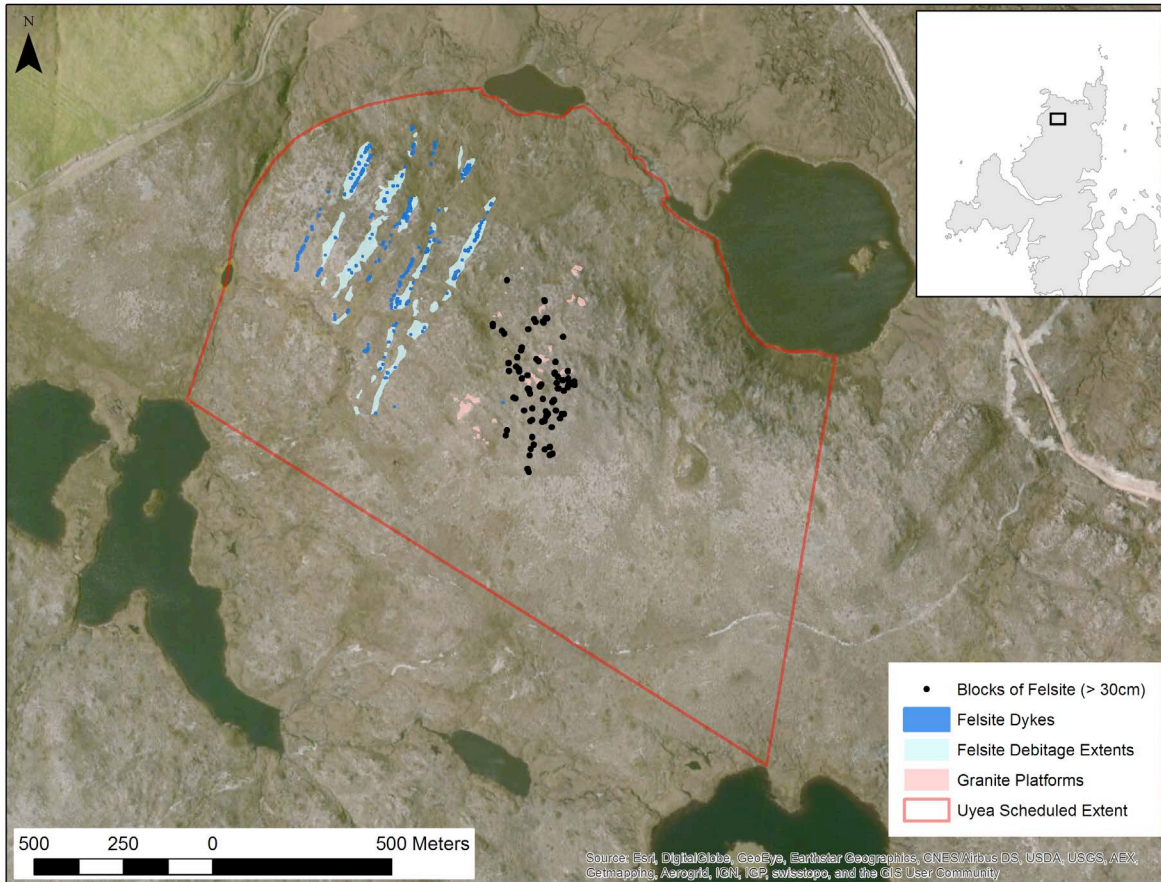


Fig. 9 Location of the major areas of exploited felsite dykes, associated debitage and large blocks of felsite to the east of major dykes. Extent of the Beorgs of Uyea Schedule Monument (Index No. 890) shown.

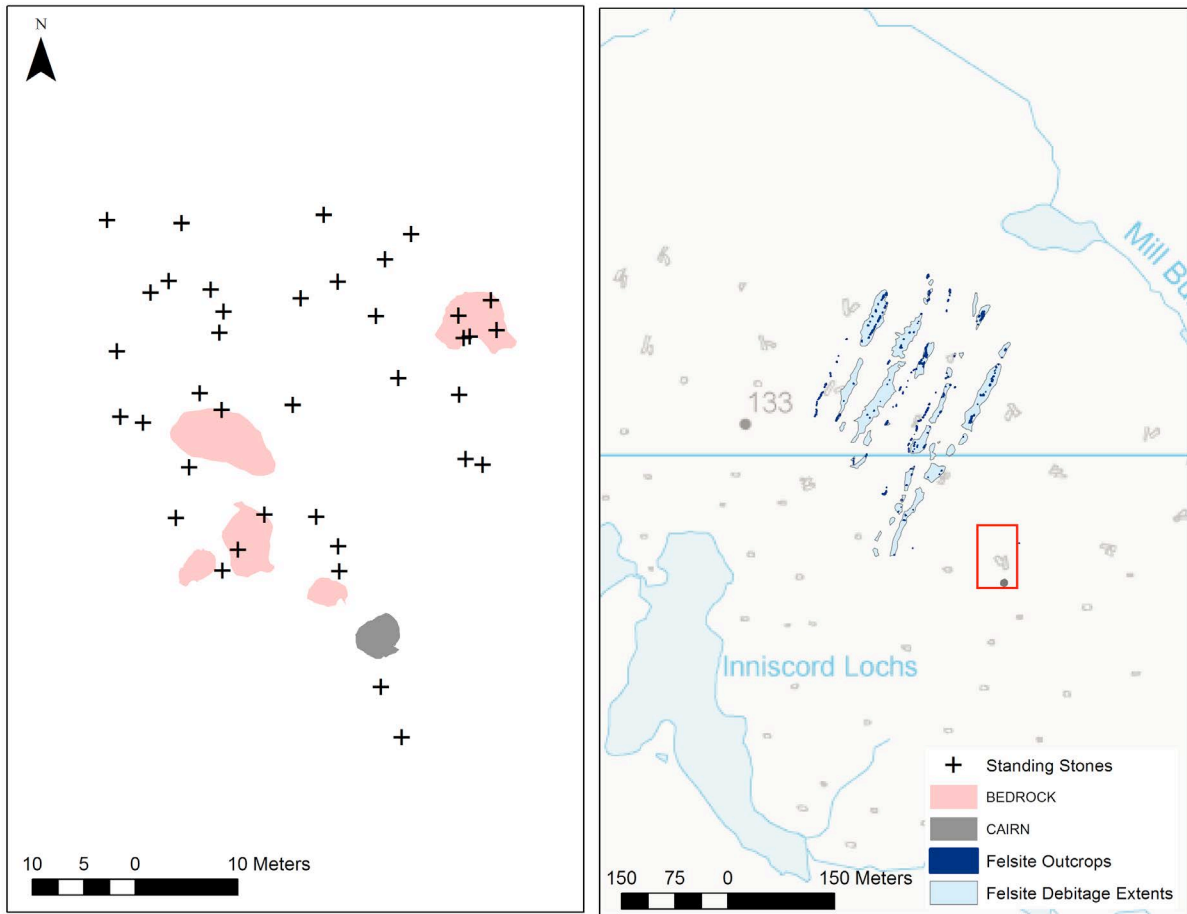


Fig. 10 Zones of felsite exploitation at the Beorgs of Uyea, detail of part of western zone inset.

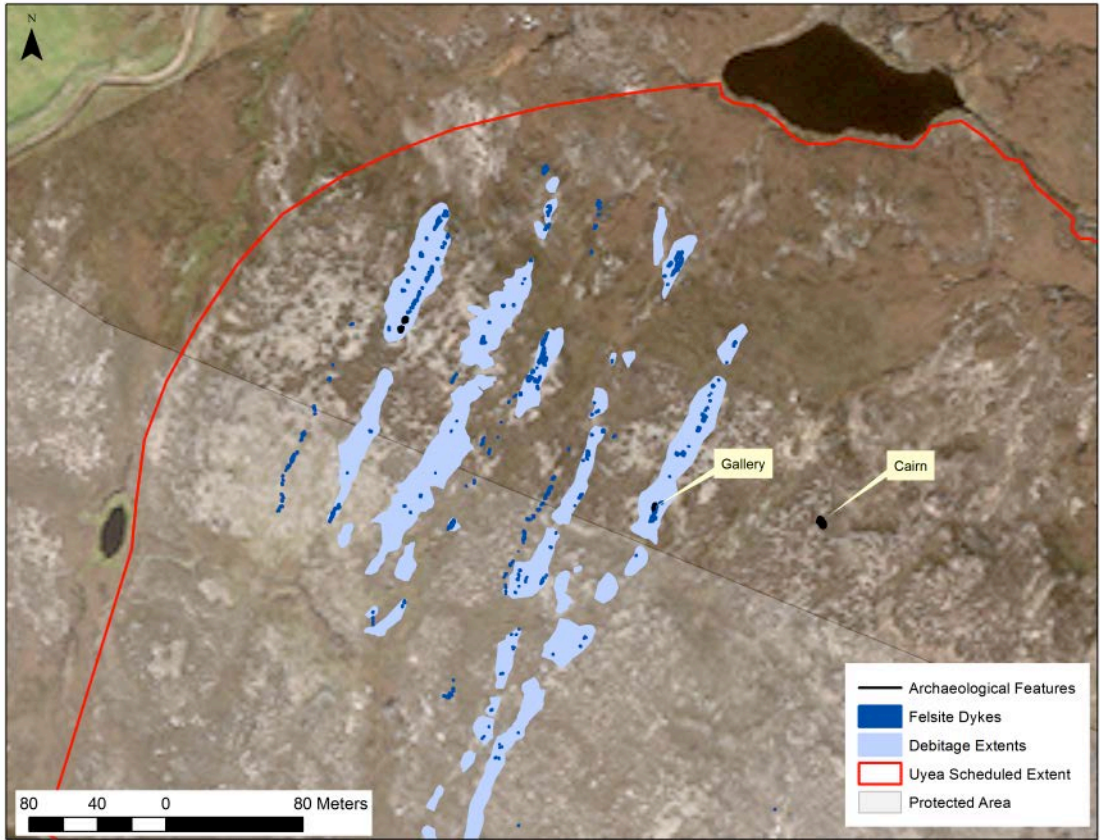


Fig. 11 Zones of felsite exploitation at the Beorgs of Uyea, associated monuments and overlap with northern area of the Ronas Hill-North Roe SSSI, SPC, and SAC.

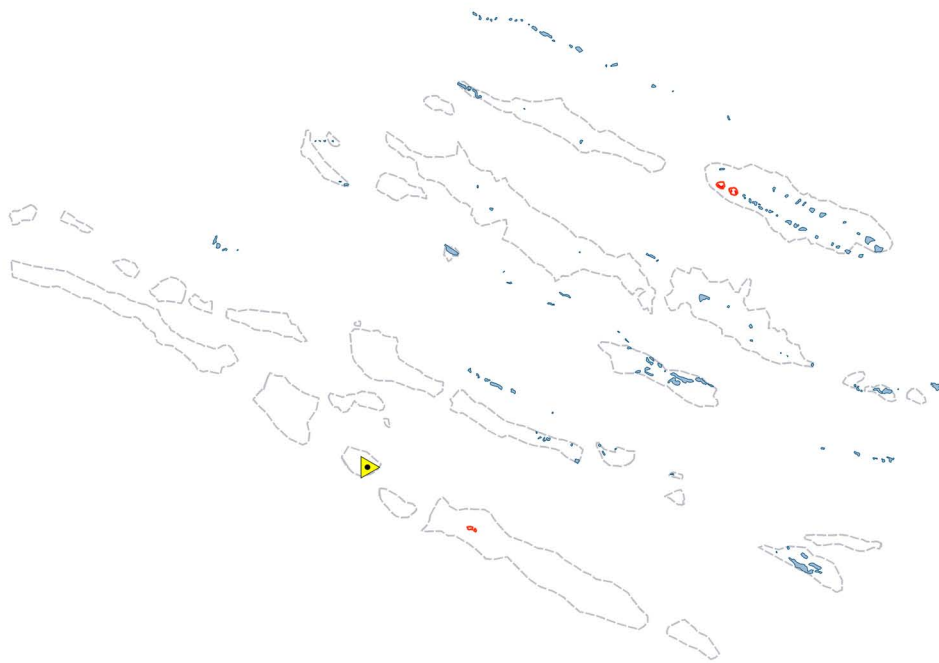
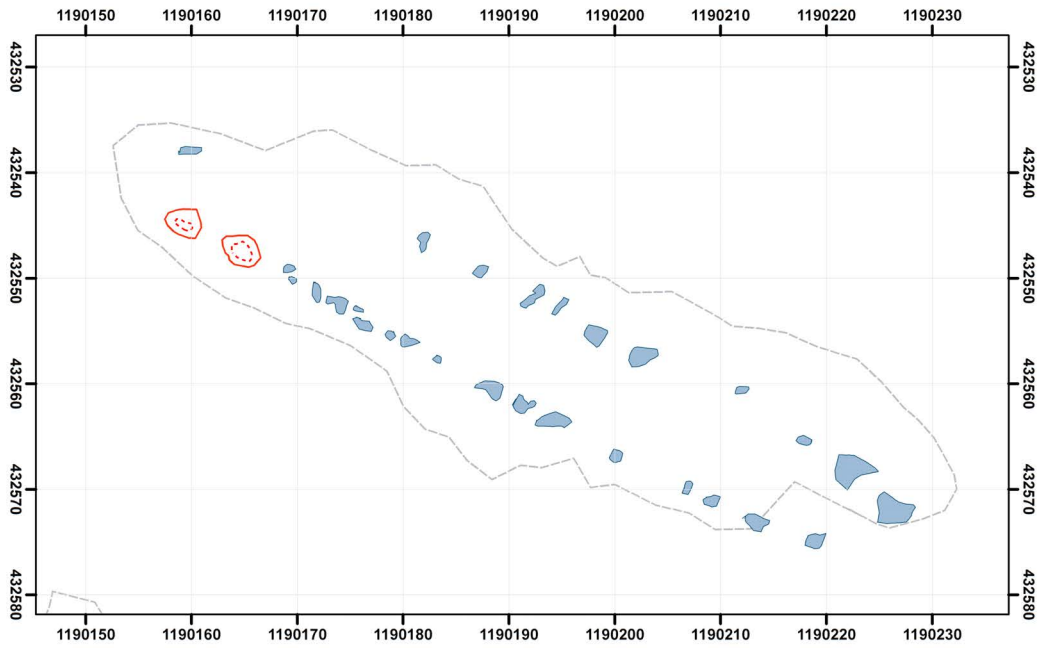


Fig. 12 Zones of felsite exploitation at the Beorgs of Uyea, detail of part of western zone inset.

