

Inchcolm Abbey

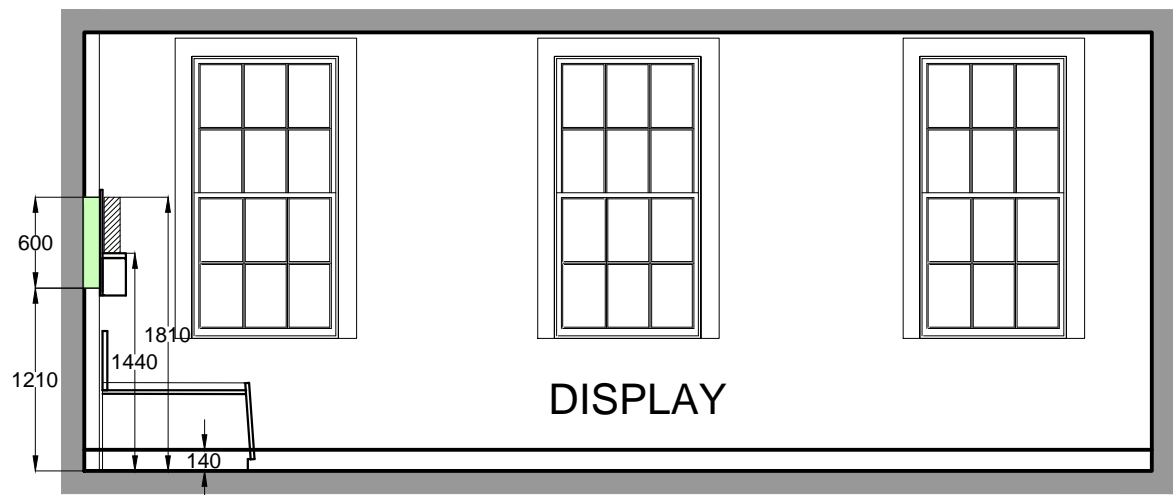
SITE/LOCATION PLAN (1:500)

MONUMENT	INCHCOLM ABBEY
PROJECT	Location Plans and Sections Visitor Centre - Mass Dial Fixing Locations

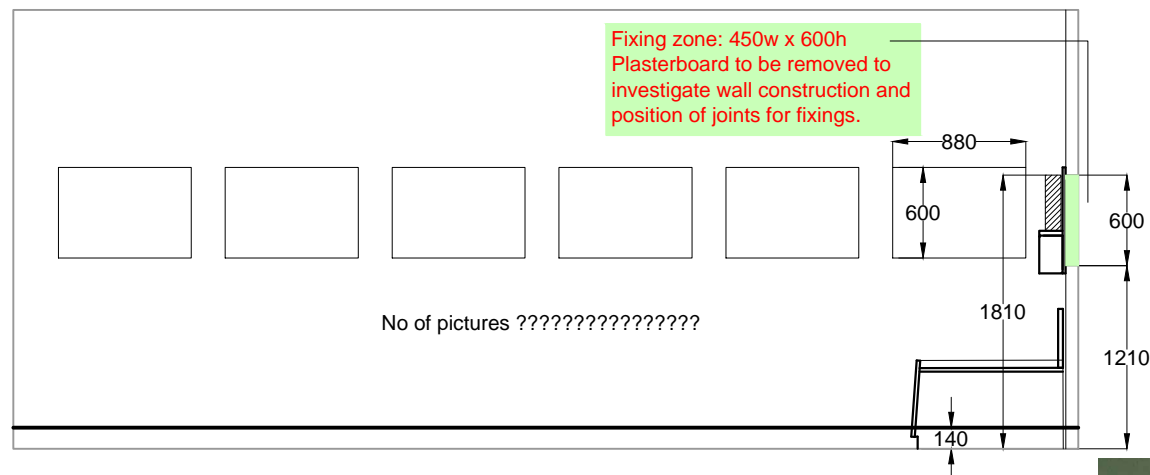


PROJECT DRAWING NUMBER			
SCALE	1:500 @ A3	ARCHITECT	DMBorthwick
DATE	Feb' 2016	DRAWN BY	BTPringle
ARCHIVE NUMBER	360/166/269		

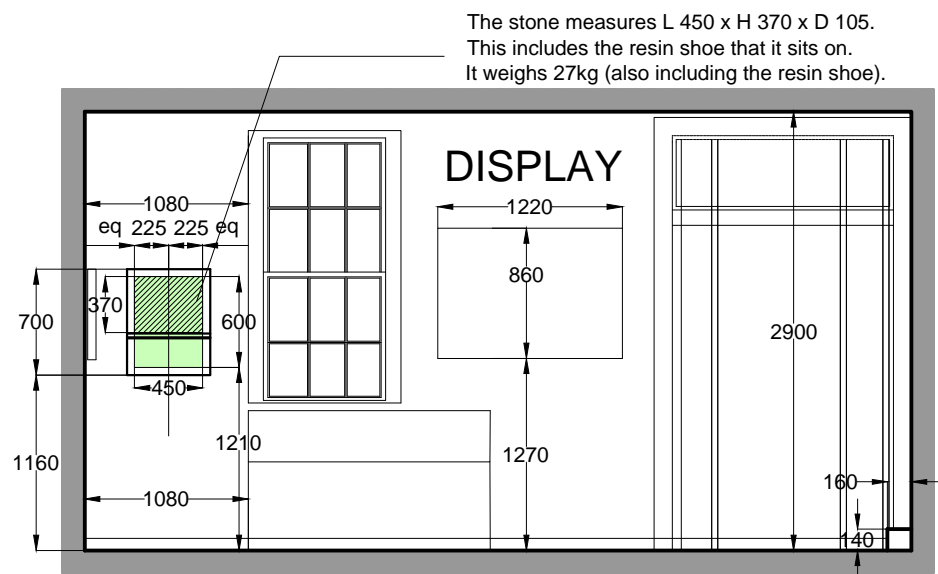
SMC



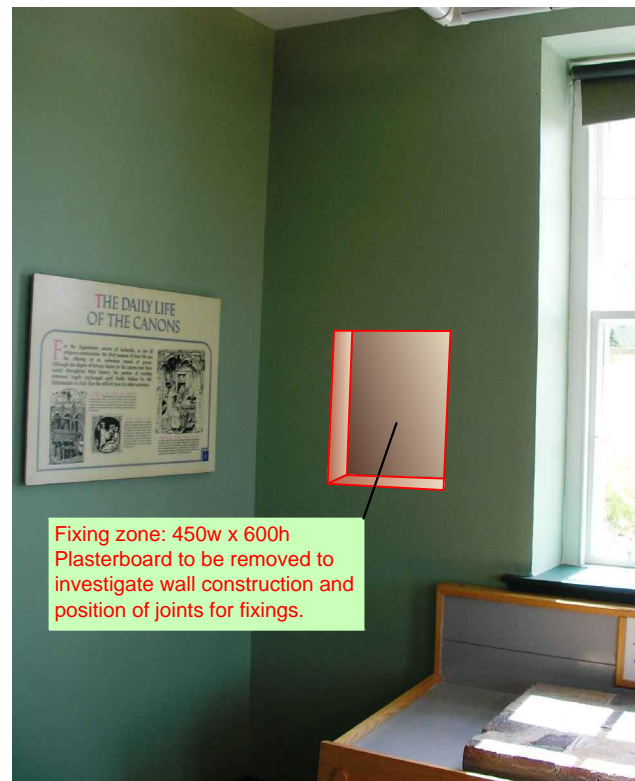
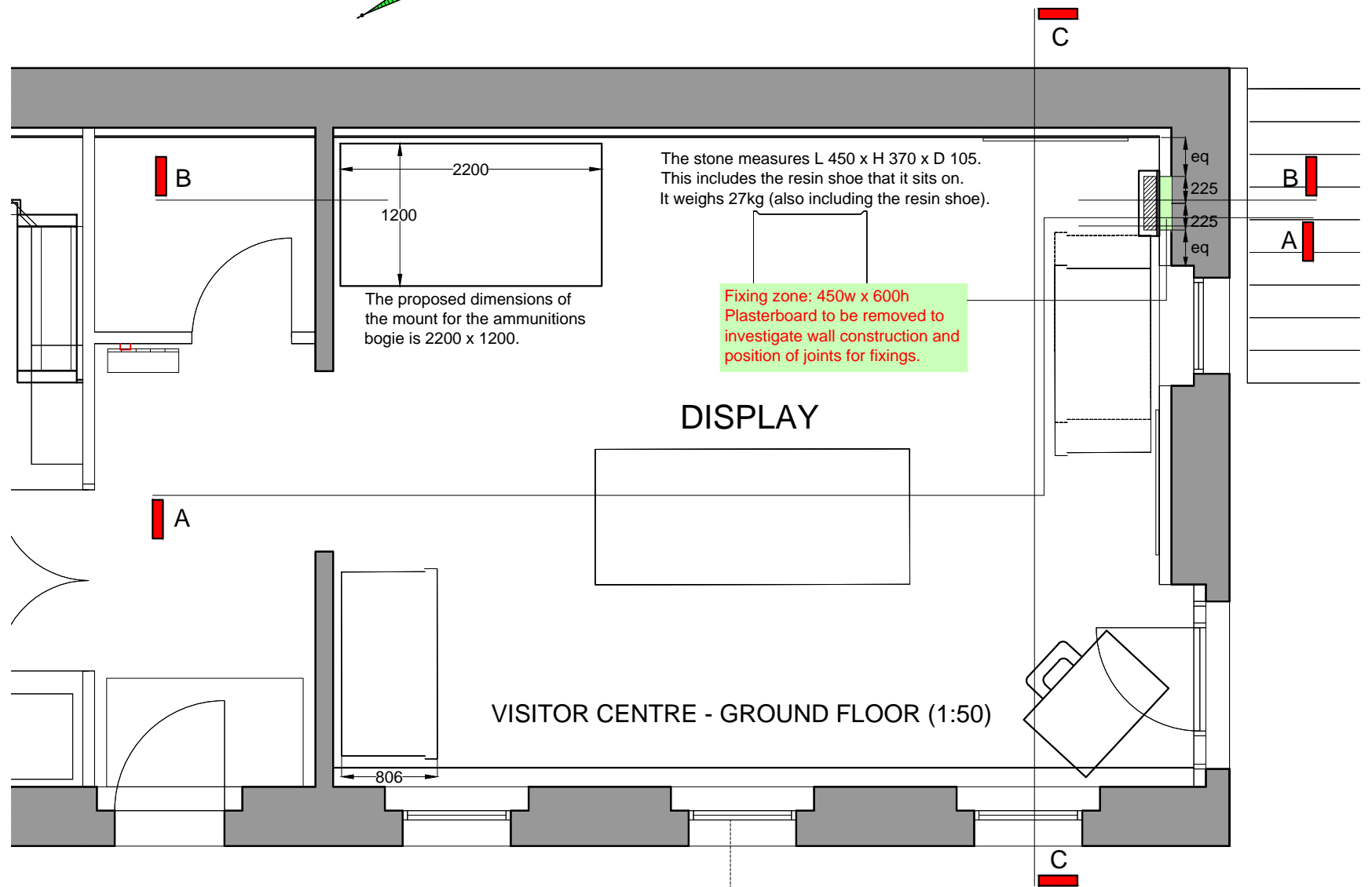
SECTION A-A (1:50)



SECTION B-B (1:50)



SECTION C-C (1:50)



Residual Risks:-

- A. Large heavy units. Method statement required from supplier.
- B. Isolate services in work areas.

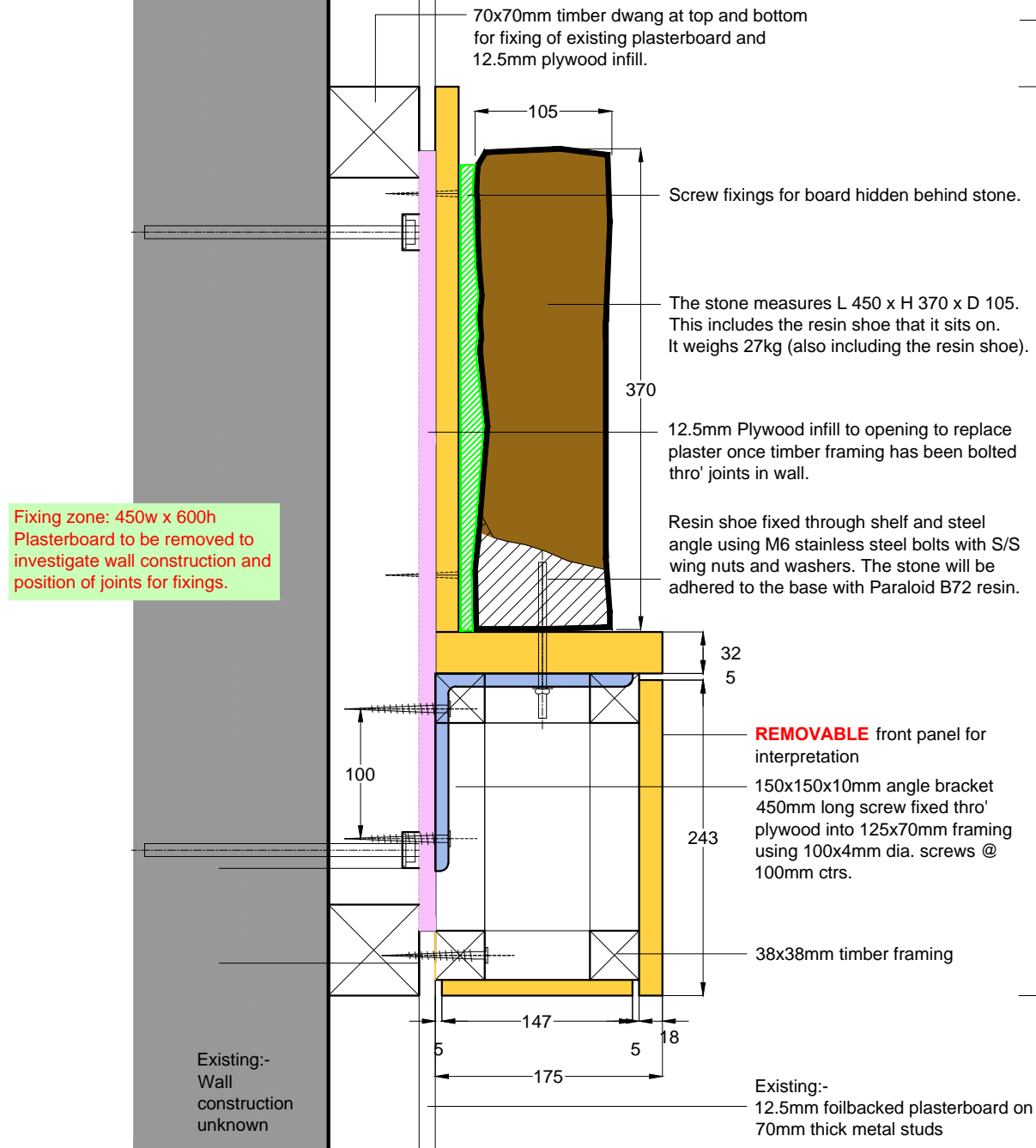


SMC

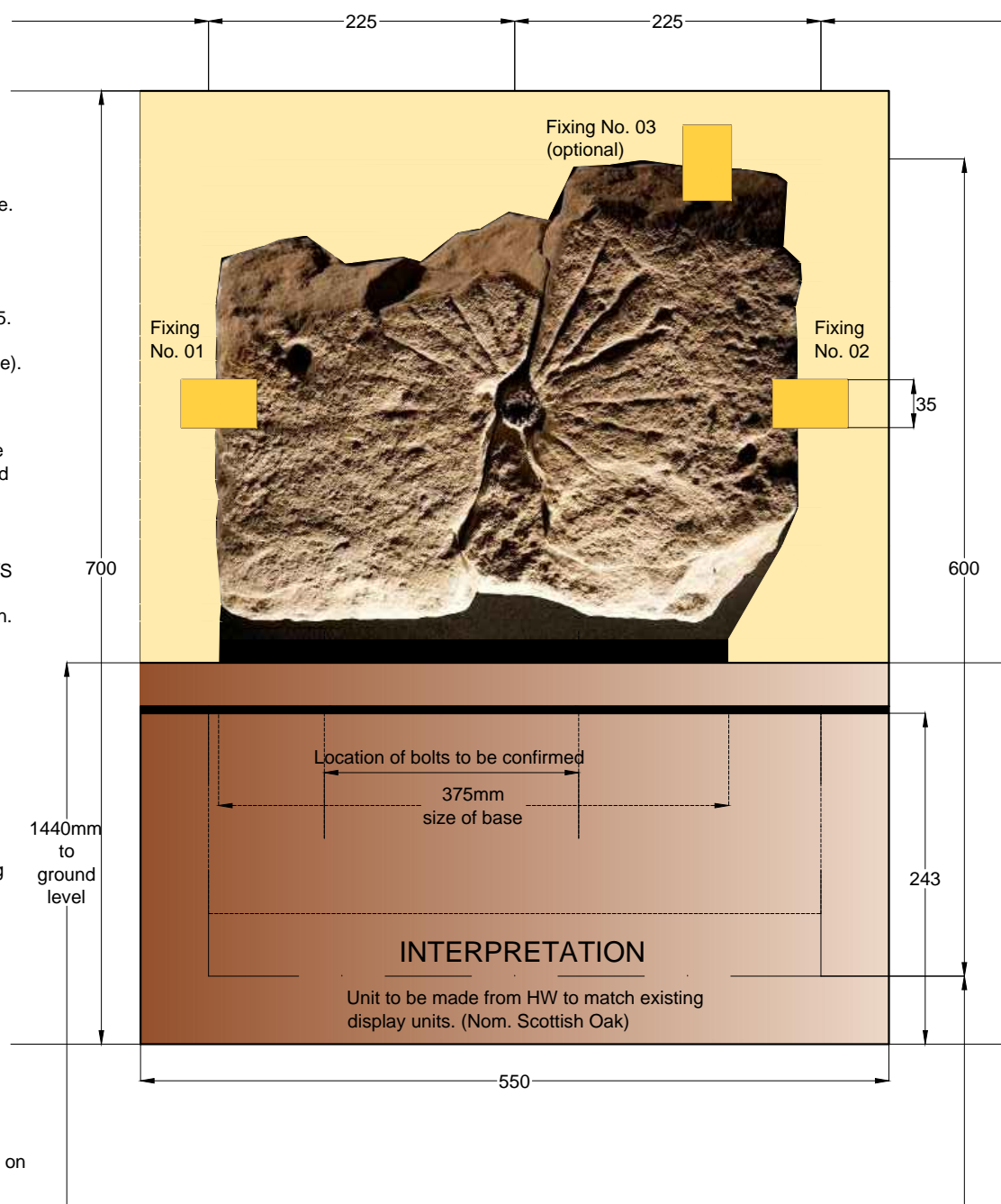
MONUMENT	INCHCOLM ABBEY
PROJECT	Plans and Sections Visitor Centre - Mass Dial Fixing Locations

HISTORIC SCOTLAND
ALBA AOSMHOR

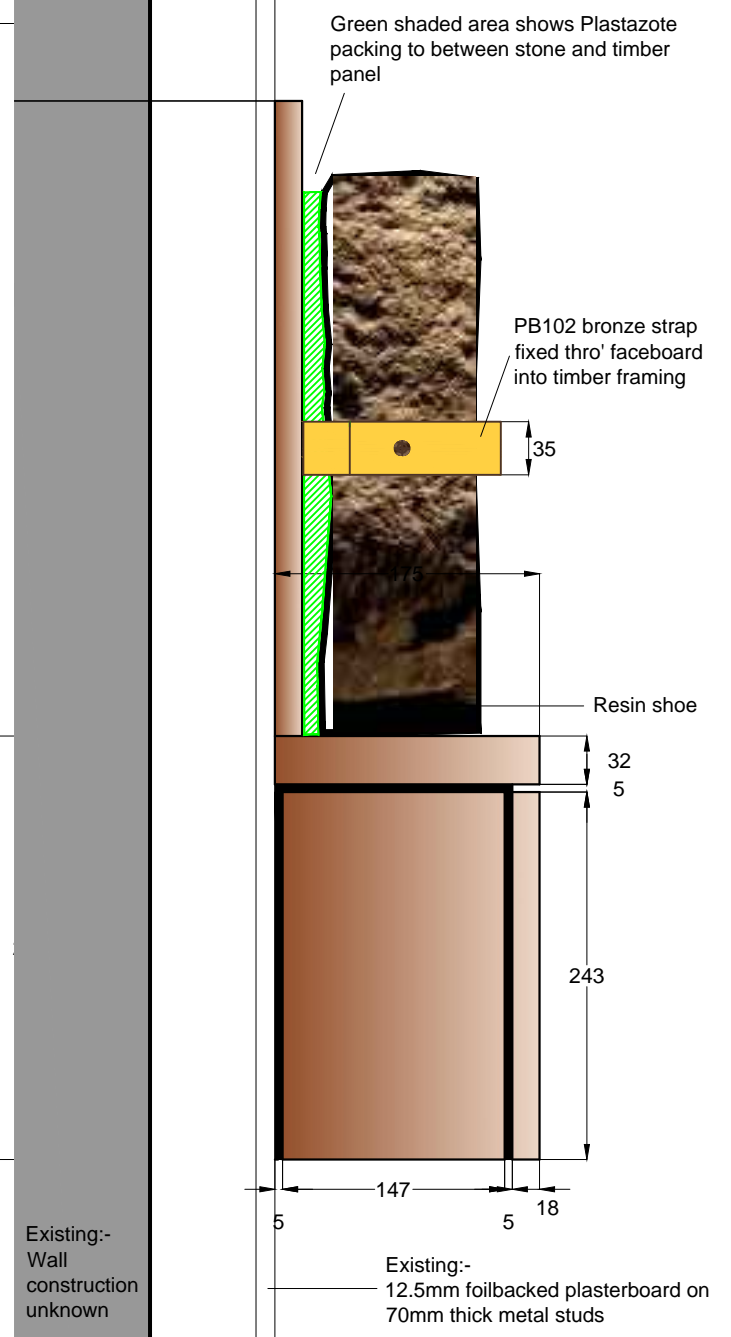
PROJECT DRAWING NUMBER		
SCALE	1:50 @ A3	ARCHITECT DMBorthwick
DATE	Feb' 2016	DRAWN BY BTPringle
ARCHIVE NUMBER	360/166/270	



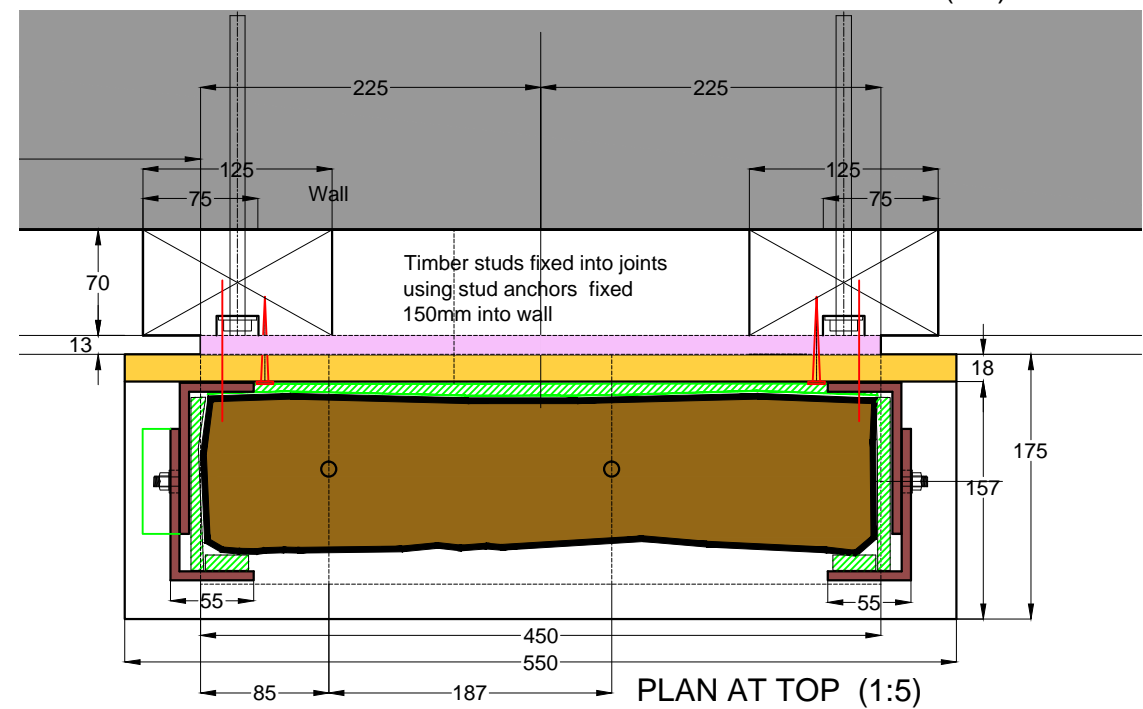
VERTICAL SECTION (1:5)



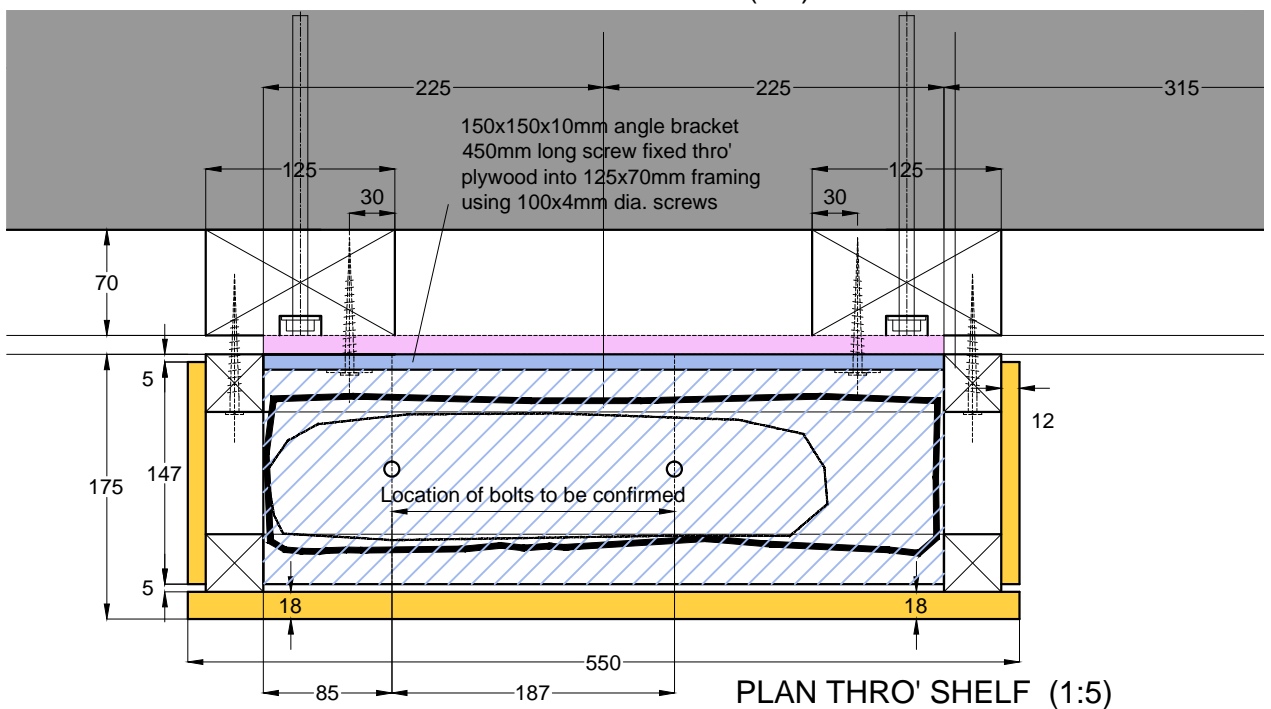
FRONT ELEVATION (1:5)



SIDE ELEVATION (1:5)



PLAN AT TOP (1:5)



PLAN THRO' SHELF (1:5)

MONUMENT	INCHCOLM ABBEY
PROJECT	Mass Dial Display Details Visitor Centre - Mass Dial Fixing Locations



PROJECT DRAWING NUMBER	SMC	
SCALE	1:50 @ A3	ARCHITECT DMBorthwick
DATE	Feb' 2016	DRAWN BY BTPringle
ARCHIVE NUMBER	360/166/271	