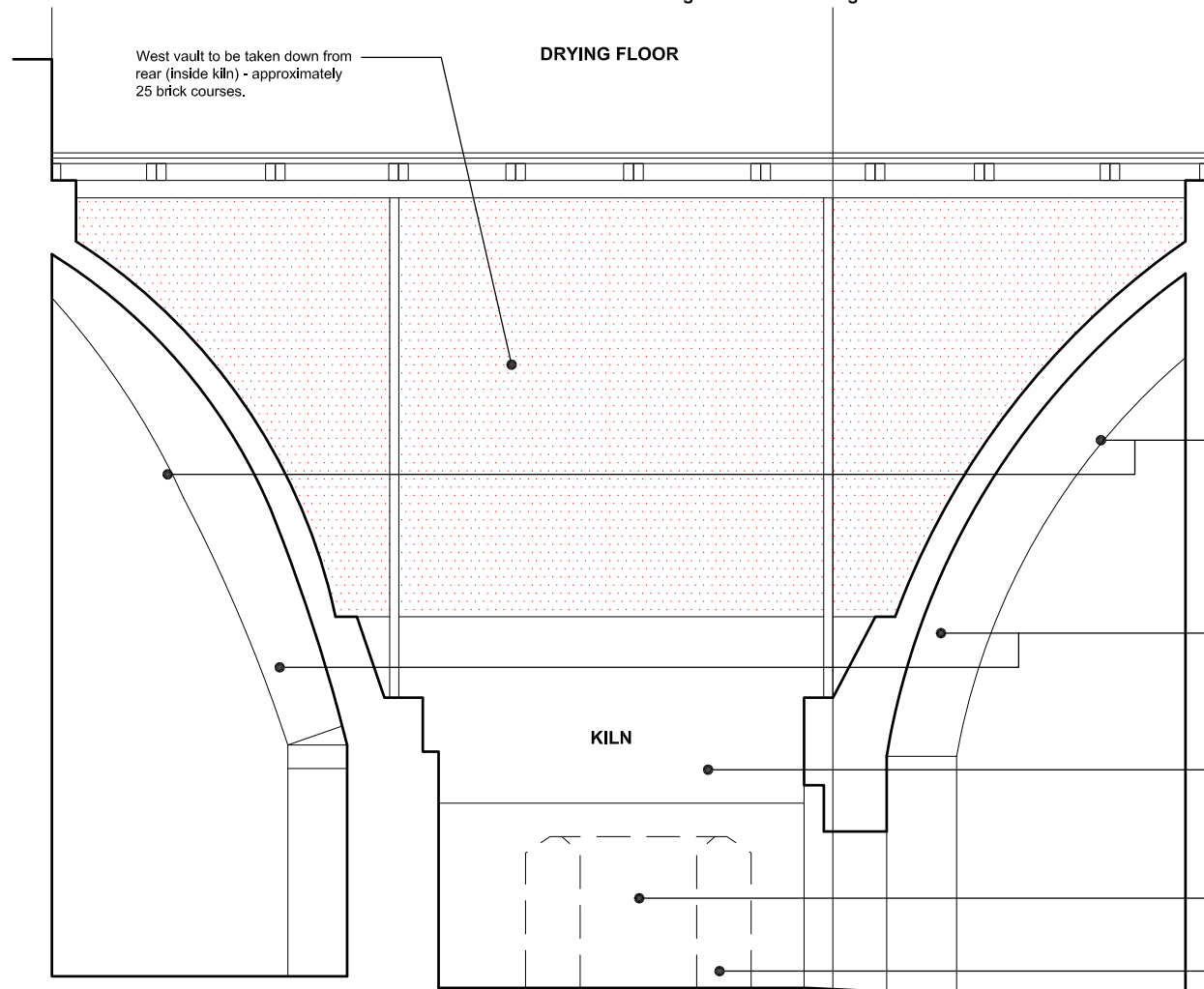


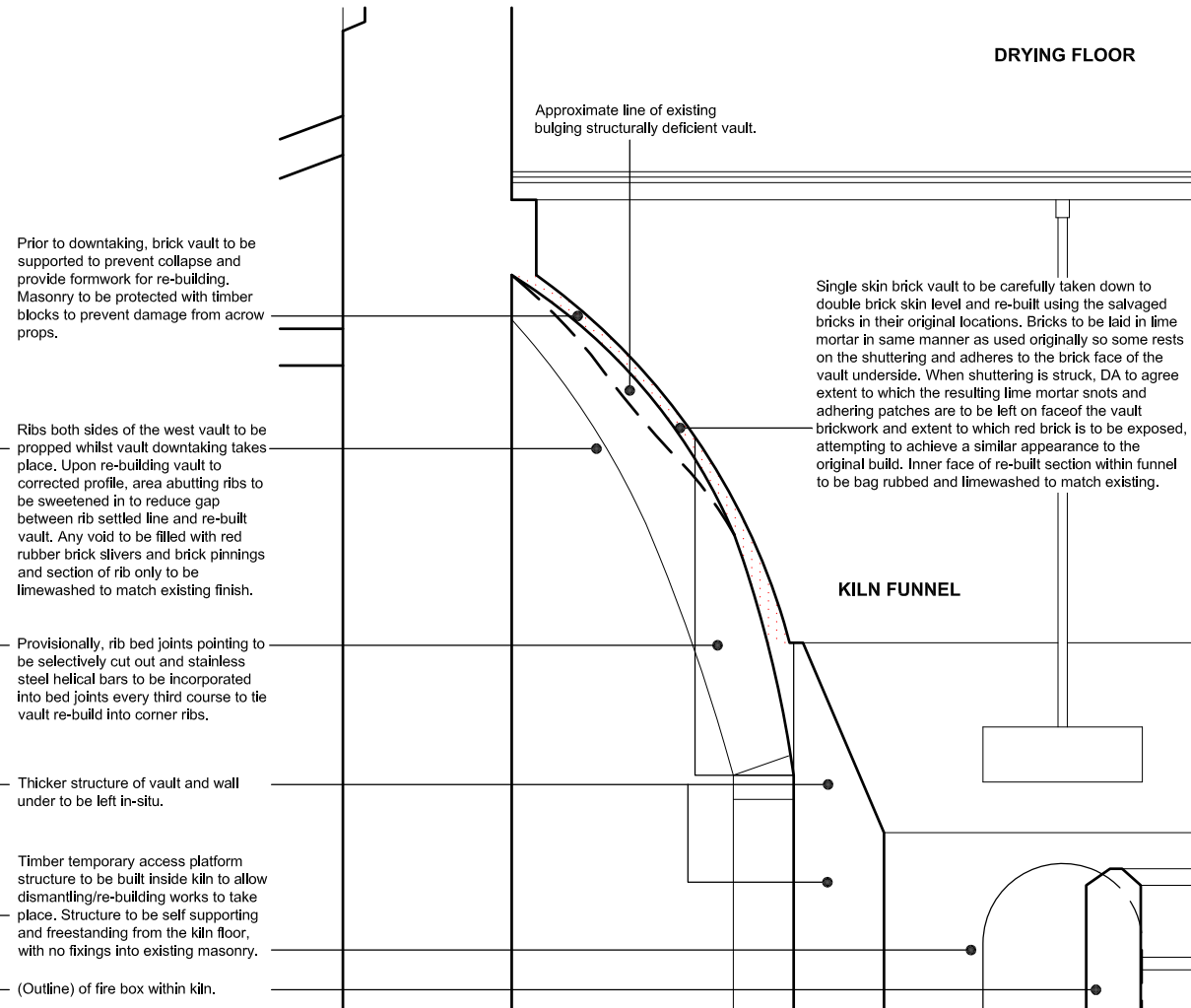
Continuous cracks to mortar bed joint and bulge to brickwork.

Hungry joints to brickwork and areas of adhered mortar from bricks being built off shuttering.

Oblique views of affected west facing vault. Vault to be partially duntaken (outlined in red) and re-built.



1:20 SECTION AA facing west: view from inside kiln of back of brick vault to be repaired.



1:20 SECTION BB facing north: showing repair works to west brick vault to kiln.

Notes:

GENERAL:

Defective west vault brickwork to be dismantled and re-built in lime mortar using the salvaged bricks to corrected profile without bulge which compromises structural performance. Red rubber fired clay bricks cut to match size to be used to make up quantities where original bricks are broken or cracked and unable to be re-used.

Remainder of brick vaults to other sides, base walls and fire box to have dust hoovered off interior for inspection and assessment of repair needs. Provisionally localised re-setting of loose bricks and re-pointing to be carried out.

PROPPING OF VAULT:

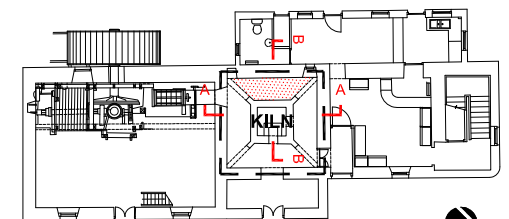
Whole area of west brick vault to be propped/supported whilst duntaking and re-build takes place. Provisionally, a combination of plywood 'formers' cut to profile of vault with flexible plywood curved to underside face of vault. Timber battens fixed to profiled plywood (screw heads to be covered in foam to protect brickwork) to give added support. Further timber battens cut to profile of vault to fix to battens allowing across props to be positioned for support.

BRICK VAULT DUNTAKING:

Prior to duntaking, all bricks to be numbered on the kiln side with brick course number (1 to 25 or 26) from the top of the vault. Bricks to be photographed in-situ to allow accurate re-build. Duntaking to stop at the point where the vault skin thickness increases (approximately 1.4m above ground level of kiln). Vault to be carefully dismantled brick course by brick course from the top of the vault down and set aside on site. Bricks to be stored on tarpauline sheet in the order of their removal for ease of re-building.

Revisions:

REV A: 15/12/2015 [SD] - Notes amended for SMC application.



MONUMENT	NEW ABBEY CORN MILL
PROJECT	KILN VAULT CONSOLIDATION PROPOSED WORKS



PROJECT DRAWING NUMBER	90323-151119-001A	
SCALE	1:20@A2	ARCHITECT P.BEATON
DATE	23/11/2015	DRAWN BY S.DEASLEY
ARCHIVE NUMBER	-	