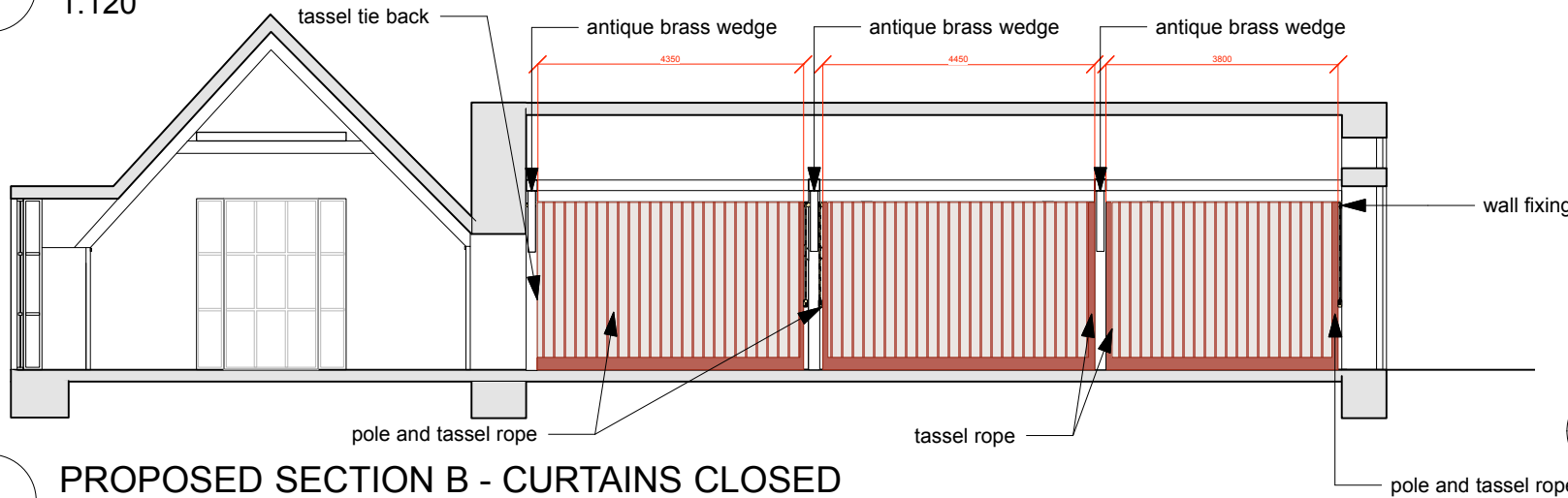
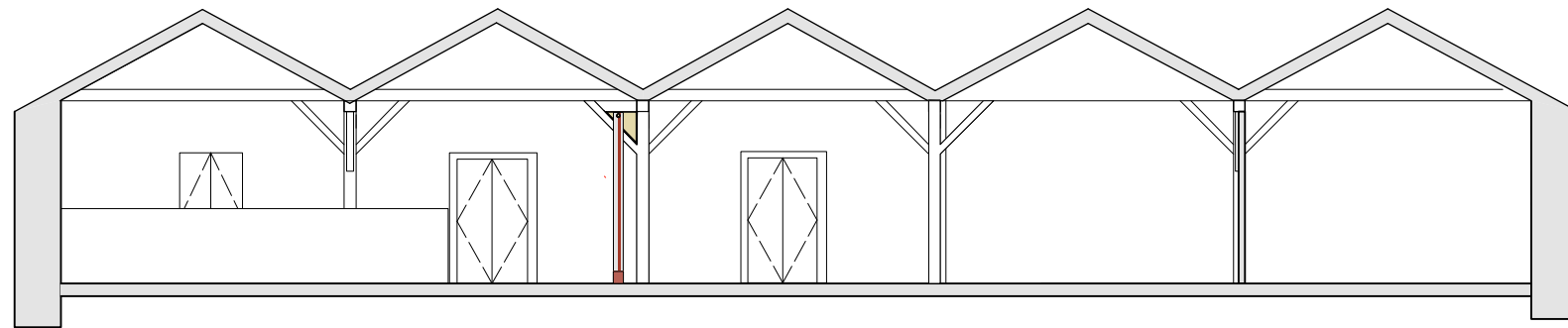


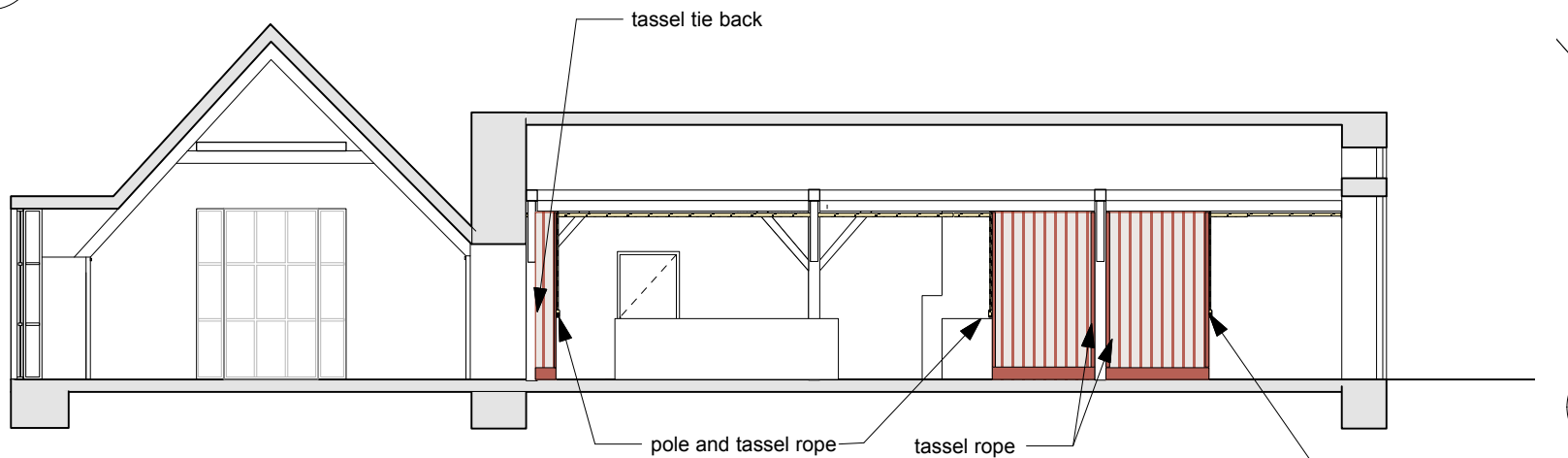
1 PROPOSED SECTION A - CURTAINS CLOSED  
1:120



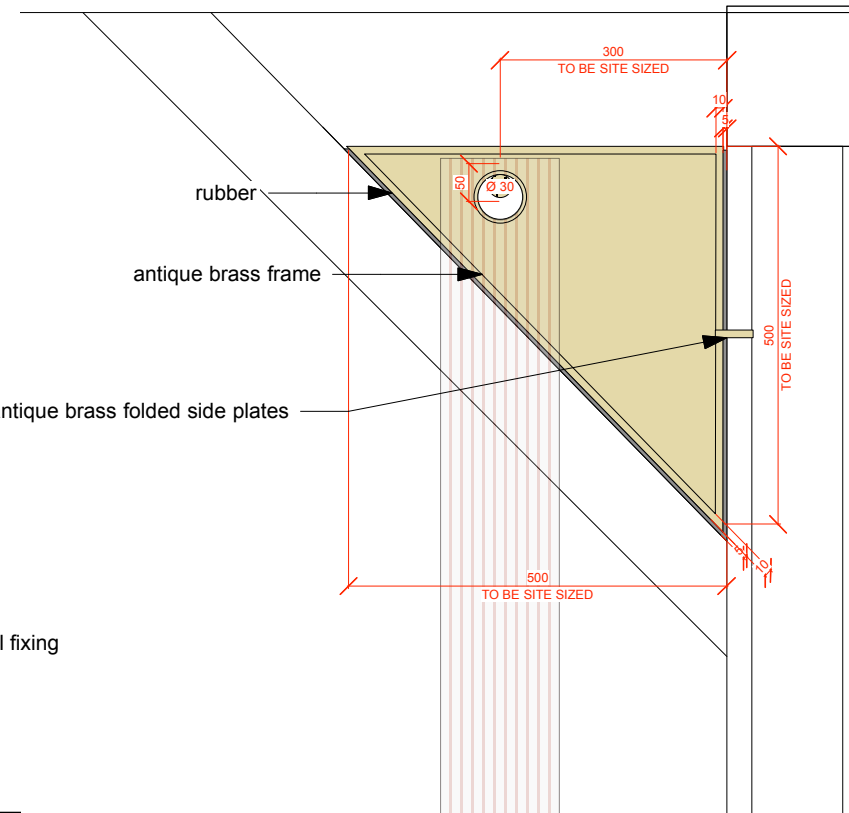
2 PROPOSED SECTION B - CURTAINS CLOSED  
1:120



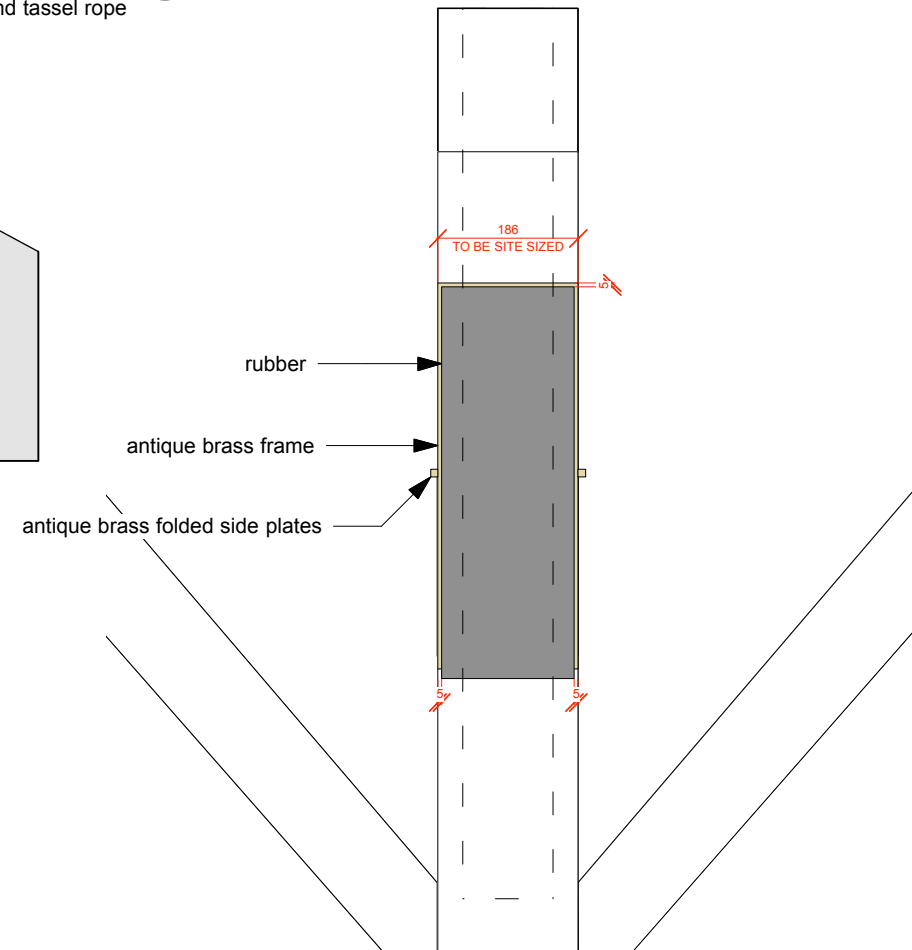
3 PROPOSED SECTION A - CURTAINS OPEN  
1:120



4 PROPOSED SECTION B - CURTAINS OPEN  
1:120



5 PROPOSED BRACKET DETAIL  
1:10



6 PROPOSED BRACKET DETAIL  
1:10

### LEGEND

3 no. Non invasive blacksmith fabricated brackets to be able to support and carry rods for curtains that weigh a max 42kilos.

10mm thick antique brass wedge by blacksmith. Triangular flat outer frame with solid matching infill plate to middle with hole to house curtain rod. (site sizes required) to nest into angled truss sections. Frame depth is to match individual depth of beams.

Flat frame to have 5mm black rubber pad applied to edges touching existing timber.

Discreet matching folded plates at sides to stabilise. No fixings to be made to trusses.

1 no. Wall mounted fabricated antique brass wall fixing plate.

Double sided fabric curtain with antique brass eyelets. bottom trim and leading edges in matching fabric suitable for touching the floor/heavy contract use. Main curtain fabric Skopos Astoria V1 Mouse.

Fabricated antique brass curtain pull rod arm. 3 no. 1 no. per curtain at leading edge.

6 no. Decorative metallic curtain ropes suspended from pole to sit at ends of curtains each with tassel at the end. KT/Z0497/SILVER/GOLD metallic key tassel with matching plain 1500mm metallic rope from Terry's Fabrics.

1 no. Decorative curtain tie back with 1 no. tassel. KT/Z0497/SILVER/GOLD metallic key tassel with matching plain metallic rope from Terry's Fabrics.



### INFORMATION

client>	
BENUGO	
project>	
RED COAT CAFE AND JACOBITE ROOM, EDINBURGH CASTLE	
title>	
PROPOSED CURTAIN DETAIL	
drawn by>	date>
CM	11.11.15
scale>	revision>
1:10/120 @ A3	-
drawing number>	
AL(70)001	

This drawing is to be read in conjunction with standard details and specifications. All works to comply with current building regulations. This drawing is the property of 442 Design, all copyright is reserved. This drawing is issued on condition that it is not copied, reproduced, retained or disclosed to any unauthorised person either whole or in part.

442 Design to be notified of any discrepancies which occur on site. Any modifications which result from said discrepancies to be approved by designers.

DO NOT SCALE FROM THIS DRAWING. ALL DIMENSIONS TO BE CHECKED ON SITE BY CONTRACTOR PRIOR TO COMMENCEMENT OF ANY WORKS.