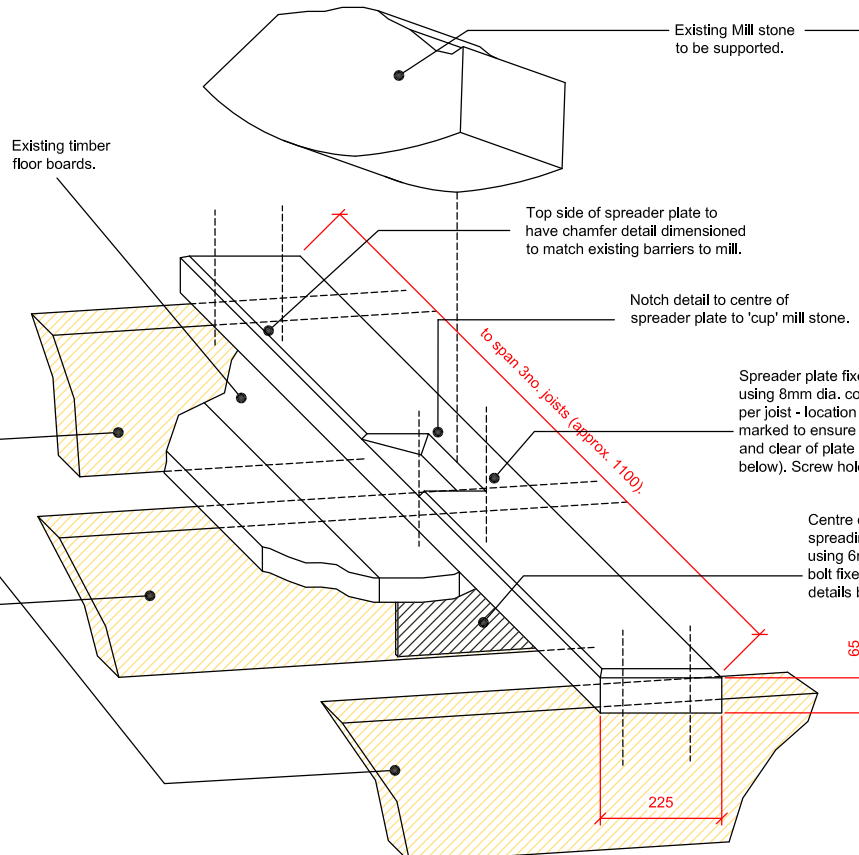


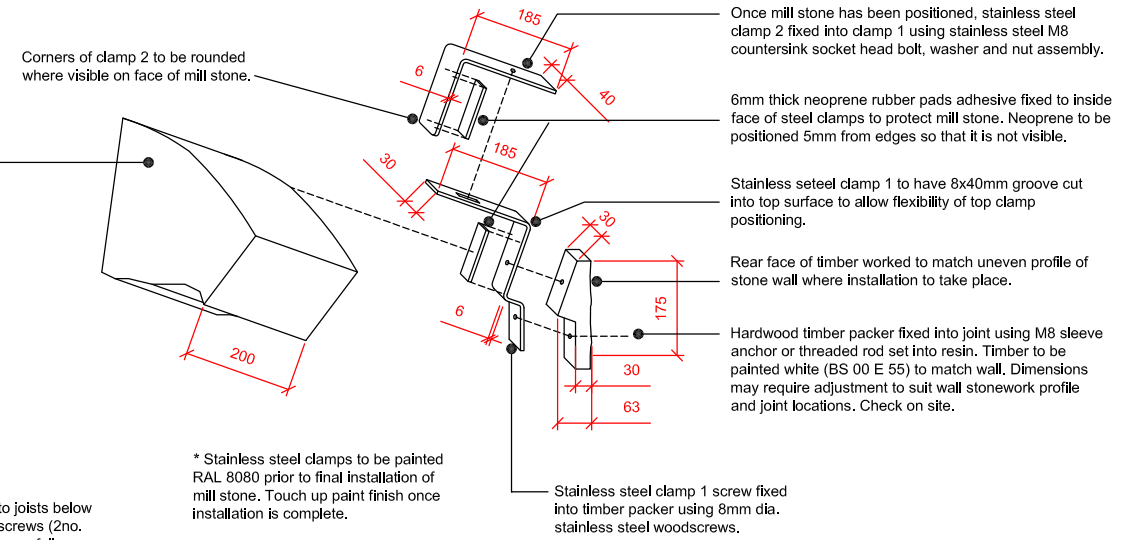
1:200 GROUND FLOOR PLAN: showing location of first floor joist to be strengthened.

Existing Mill stone dimensions:
1280mm diameter,
200mm thick.



1:10 DETAIL AXONOMETRIC: showing proposed spreader plate at first floor level.

1:10 DETAIL AXONOMETRIC: showing proposed stainless steel clamp fixings.



1:10 DETAIL OF CLAMP FIXINGS

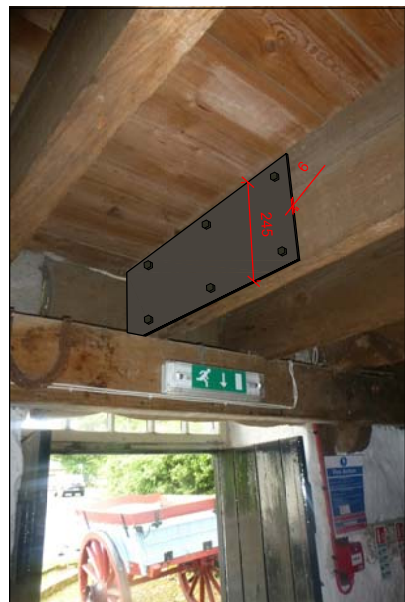


MOCK UP OF MILL STONE SUPPORTS

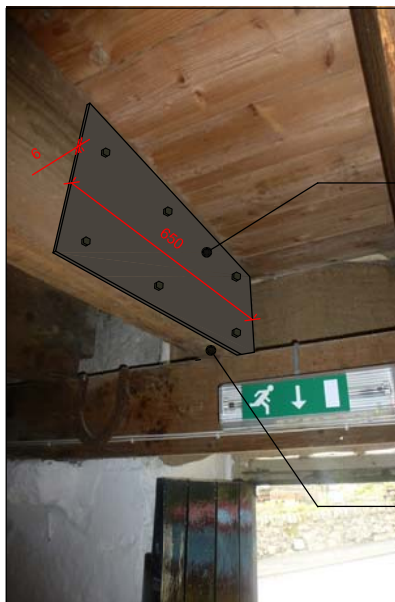


Mill stone to be moved to allow installation of clamps and new timber spreader plate. Method to be devised incorporating structural engineer's recommendations - provisionally:
Joists under supported by acro props with timber spreader plate at 3no. joists braced in position (no fixings to be made into floor or joists). Mill stone rolled onto temporary spreader plate/sheet on first floor timbers corresponding to acro prop support under. Once new spreader plate has been installed, mill stone to be rolled back for final installation of steel clamps.

219x69mm planed square edged Douglas Fir spreader plate with chamfered edges to top side and notch detail to 'cup' mill stone.

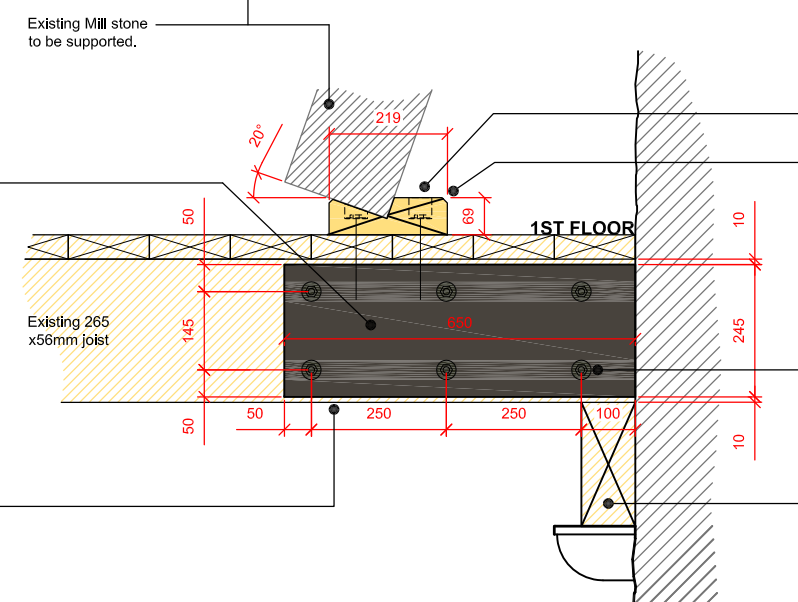


MOCK UP OF 6mm THICK STRENGTHENING PLATES TO JOIST BELOW FIRST FLOOR



245x650x6mm painted stainless steel plate (RAL 8080).

Stainless steel plate kept approx. 10mm above joist edge to allow for variations/wear on timber edge.



1:10 DETAIL AT FLOOR JOIST: showing strengthening plates.

Residual Risks

1. Precise weight of mill stone is unknown. Method statement to be devised in collaboration with structural engineers to spread load of mill stone when moving. Provisionally acro props and timber spreader plates to be used to support floor during operations.

Revisions:
REV A: 29/10/2015 [SD] - Bracket and notes amended.

This map is reproduced from Ordnance Survey material with the permission of Ordnance Survey on behalf of the Controller of Her Majesty's Stationery Office © Crown Copyright.
Unauthorised reproduction infringes Crown Copyright and may lead to prosecution or civil proceedings.
Historic Scotland Licence No. 100017606 (2015).

SMC

MONUMENT: **NEW ABBEY CORN MILL**
PROJECT: **FIRST FLOOR MILL STONE DISPLAY SUPPORT LOCATION & DETAILS**



PROJECT DRAWING NUMBER	90323-150910-001A		
SCALE	1:200&1:10@A2	ARCHITECT	P.BEATON
DATE	29/09/2015	DRAWN BY	S.DEASLEY
ARCHIVE NUMBER			