

# The Inventory of Historic Battlefields

## The Battle of Killiecrankie

### Designation Record

**The Inventory of Historic Battlefields is a list of nationally important battlefields in Scotland.** A battlefield is of national importance if it makes a contribution to the understanding of the archaeology and history of the nation as a whole, or has the potential to do so, or holds a particularly significant place in the national consciousness. For a battlefield to be included in the Inventory, it must be considered to be of national importance either for its association with key historical events or figures; or for the physical remains and/or archaeological potential it contains; or for its landscape context. In addition, it must be possible to define the site on a modern map with a reasonable degree of accuracy.

**The aim of the Inventory is to raise awareness of the significance of these nationally important battlefield sites and to assist in their protection and management for the future.** Inventory battlefields are a material consideration in the planning process. The Inventory is also a major resource for enhancing the understanding, appreciation and enjoyment of historic battlefields, for promoting education and stimulating further research, and for developing their potential as attractions for visitors.

### Contents

<b>Name</b>	<b>Date of Addition to Inventory</b>
<b>Alternative Name(s)</b>	<b>Date of Last Update</b>
<b>Date of Battle</b>	<b>Overview and Statement of</b>
<b>Local Authority</b>	<b>Significance</b>
<b>NGR Centred</b>	<b>Inventory Boundary</b>

# Inventory of Historic Battlefields

## KILLIECRANKIE

Alternative Names: None

27 July 1689

Local Authority: Perth and Kinross

NGR centred: NN 909 634

Date of Addition to Inventory: 21 March 2011

Date of last update: 14 December 2012

## Overview and Statement of Significance

The Battle of Killiecrankie is significant as it is the opening battle of the first Jacobite Rising in Scotland. In later years their success at Killiecrankie would be a continual inspiration to Jacobites in Scotland, even though the loss of Dundee in the battle fatally undermined their cause. It also highlights the devastating effect a well-executed Highland charge could have on an enemy, and also displays the first of numerous technological and tactical developments by the fledgling British Army in this period.

John Graham of Claverhouse, the Viscount Dundee, had raised an army after James VII and II was ousted from the throne by the arrival of William of Orange in 1688. The battle came after a summer of manoeuvres where Major General Hugh Mackay led Government troops across the Highlands in pursuit of the growing army of Jacobites. The battle, fought on the slopes of the Killiecrankie Pass, was a victory for the Jacobites. It was, however, one of the bloodiest fought during the fifty years of the Jacobite risings, with huge losses on both sides. The most significant fatality was Dundee, leaving the cause with no effective leadership. This ultimately prevented the Jacobites from capitalising on their initial success and without a clear successor the rising came to an end the following year.

## Inventory Boundary

**The Inventory boundary defines the area in which the main events of the battle are considered to have taken place (landscape context) and where associated physical remains and archaeological evidence occur or may be expected (specific qualities).** The landscape context is described under *battlefield landscape*: it encompasses areas of fighting, key movements of troops across the landscape and other important locations, such as the positions of camps or vantage points. Although the landscape has changed since the time of the battle, key characteristics of the terrain at the time of the battle can normally still be identified, enabling events to be more fully understood and interpreted in their landscape context. Specific qualities are described under *physical remains and potential*: these include landscape features that played a significant role in the battle, other physical remains, such as enclosures or built structures, and areas of known or potential archaeological evidence.

## Inventory of Historic Battlefields

The Inventory boundary for the Battle of Killiecrankie is defined on the accompanying map and includes the following areas:

- The base of the Killiecrankie Pass as the approach line of the Government troops.
- The southern slopes of Creag Eallaich. The location of the Government and Jacobite line and the core of the battle as determined through archaeological fieldwork. This includes the remains of buildings associated with the Jacobite's initial sniper action, Urrard House and gardens and the position of the Government baggage train within the Claverhouse Stone field.
- Killiecrankie village and lands to the south-east including areas of land owned by the National Trust for Scotland as the route of the Government rout and retreat. This includes the Soldier's Leap and land which has high potential to contain graves associated with the battle.
- The well preserved landscape characteristics of the battlefield including the terrain of the Pass and the slopes of Creag Eallich. The intervisible views from the base of the glen looking upslope and from the upper terraces of the hill downslope are key to understanding the manoeuvres of both armies.

# The Inventory of Historic Battlefields - Boundary

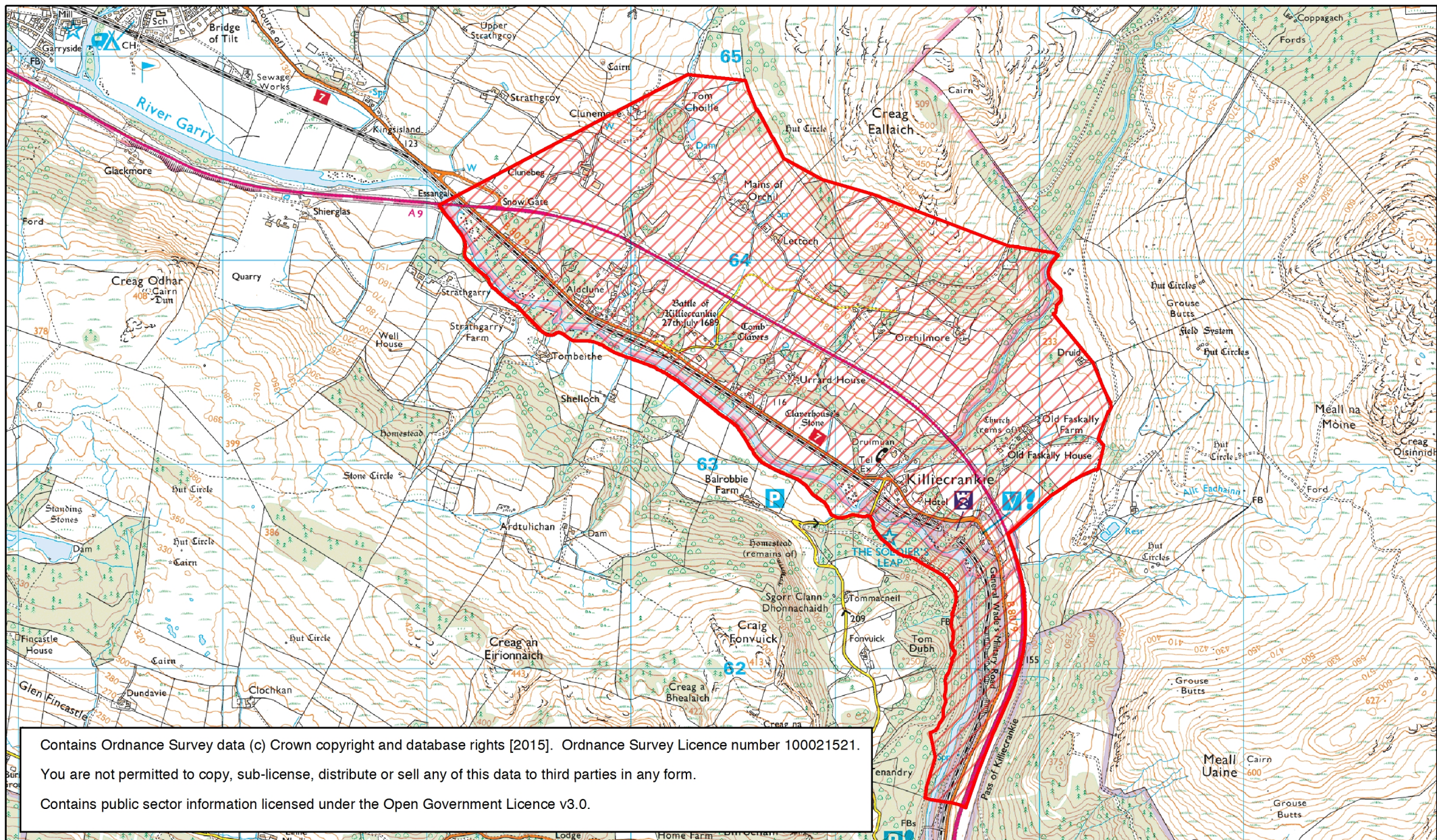
Killiecrankie

27 July 1689

Local Authority: Perth and Kinross

287000 288000 289000 290000 291000 292000 293000

764800  
764200  
763600  
763000  
762400  
761800  
761200



Contains Ordnance Survey data (c) Crown copyright and database rights [2015]. Ordnance Survey Licence number 100021521.  
You are not permitted to copy, sub-license, distribute or sell any of this data to third parties in any form.  
Contains public sector information licensed under the Open Government Licence v3.0.

 Inventory of Historic Battlefields boundary

