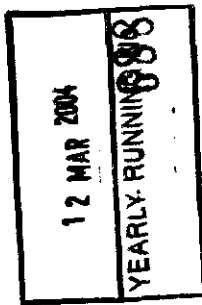


6 Ros

THE ANCIENT MONUMENTS AND
ARCHAEOLOGICAL AREAS ACT 1979



Entry in the Schedule of Monuments

S42706691201

2004

Re: The Monument known as
Carn na Buaile, fort 750m NNW of Comrie,
Contin

in the Parish of Contin and
County of Ross and Cromarty

Search Sheet No: 14782

Historic Scotland
Longmore House
Salisbury Place
Edinburgh

MFA04493.014

THE ANCIENT MONUMENTS AND ARCHAEOLOGICAL AREAS ACT 1979
ENTRY IN THE SCHEDULE OF MONUMENTS

11056

The monument known as Carn na Buaille, fort 750m NNW of Comrie, Contin, comprises a multi-period hill-top fort, situated at around 180m OD in coniferous woodland. The origins of the fort are in the Bronze Age, with continued use into the Iron Age through to modern times, with the ruins of a shepherd's cairn within the interior. The area to be scheduled is irregular, measuring a maximum of 65m E-W and 50m transversely. This area includes the fort and a small area around within which evidence relating to the occupation and use of the site is expected to survive. The monument, which lies in the Parish of Contin and the County of Ross and Cromarty as shown outlined in red on the Plan annexed and executed as relative hereto

hereby included in the Schedule of Monuments appearing to the Scottish Ministers to be of national importance compiled and maintained by them under section 1(1) of the Ancient Monuments and Archaeological Areas Act 1979.

Subscribed by Sheenagh Adams, Director of Heritage Policy with Historic Scotland, being an officer of the Scottish Ministers at Edinburgh on the 2nd day of February Two thousand and four, before this witness Lesley Macdonald, of Longmore House, Salisbury Place, Edinburgh.

Director of Heritage Policy

Register on behalf of the Scottish Ministers in the Register of the County of Ross and Cromarty.

An Officer of the Scottish Ministers

MFA04993.014

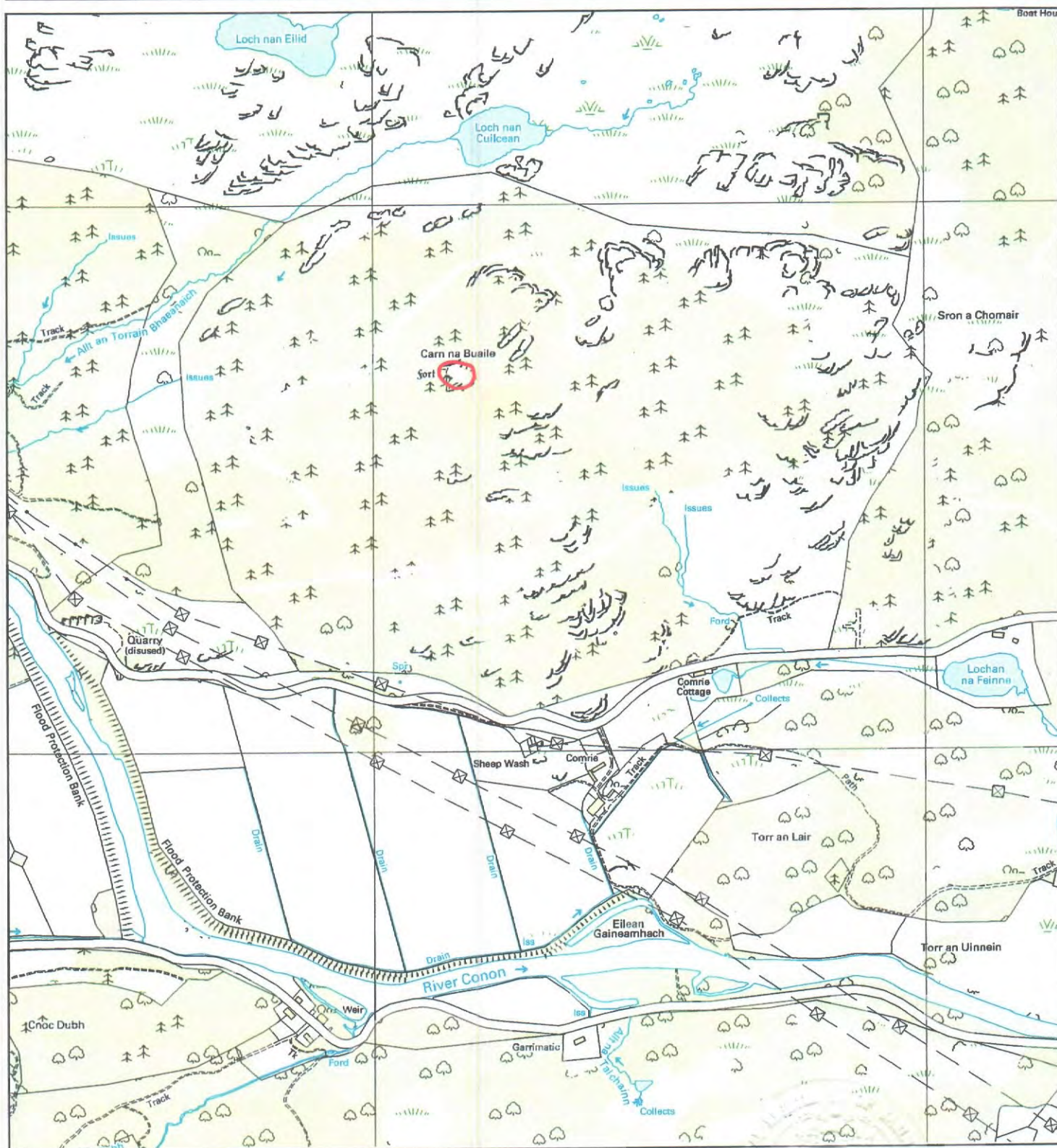
ROS 0 4 43

REGISTERS OF SCOTLAND
GENERAL REGISTER OF SASINES
COUNTY OF ROSS & CROMARTY
FICHE 43 FRAME 7
PRESENTED AND RECORDED ON

12 MAR 2004

7

This is the plan referred to in the entry in the Schedule affecting
Carn na Buaile, fort 750m NNW of Comrie, Contin,
dated: 2/2/04 and is signed as relative thereto.



Carn na Buaile, fort 750m NNW of Comrie,
Contin

Contin Parish

Scheduled Area



MapSheet: NH45NW

Scale 1:10,000

100 0 100 200 300 400 500 Meters

This map is reproduced from the OS map by Historic Scotland
with the permission of The Controller of Her Majesty's Stationery
Office, © Crown copyright. Unauthorised reproduction infringes
Crown Copyright and may lead to prosecution or civil proceedings.
Licence No. GD 03135G0014.