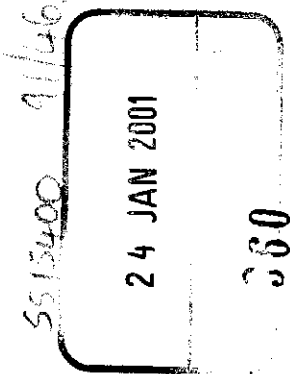


THE ANCIENT MONUMENTS AND
ARCHAEOLOGICAL AREAS ACT 1979



Entry in the Schedule of Monuments

2000

Re: The Monument known as
An Dun, dun 650m E of Drienach, Strath
Canaird

in the Parish of Lochbroom and
County of Ross and Cromarty

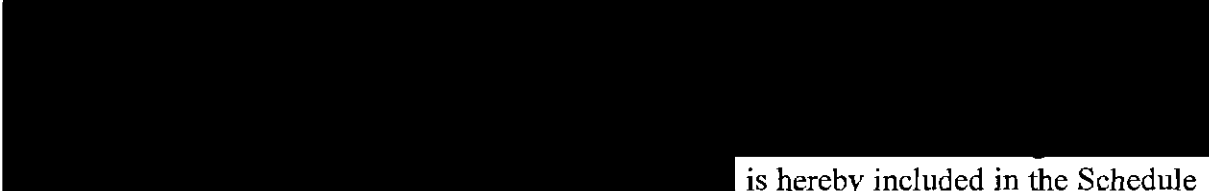
Search Sheet No: 15400

Historic Scotland
Longmore House
Salisbury Place
Edinburgh


MFA08758

THE ANCIENT MONUMENTS AND ARCHAEOLOGICAL AREAS ACT 1979
ENTRY IN THE SCHEDULE OF MONUMENTS

The monument known as An Dun, dun 650m E of Drienach, Strath Canaird comprises the remains of a dun, an Iron Age fortified settlement, located on a rocky knoll overlooking the junction of two streams, the Allt na Feithe Riabhaich and the Allt an Easach. The area to be scheduled is an irregular D-shape, bounded on the SW by a line 1m away from a fenceline and (partly) on the N by the top of a rocky bluff. It includes the dun and the later dwelling remains, plus an area around them in which evidence relating to the construction of the dun is likely to survive. This area measures a maximum of 70m NW-SE by 50m transversely. The monument, which lies in the Parish of Lochbroom and the County of Ross and Cromarty as shown outlined in red on the Plan annexed and executed as relative hereto and

 is hereby included in the Schedule of Monuments appearing to the Scottish Ministers to be of national importance compiled and maintained by them under section 1(1) of the Ancient Monuments and Archaeological Areas Act 1979.

Subscribed by Frank James Lawrie, Director of Heritage Policy with Historic Scotland, being an officer of the Scottish Ministers at Edinburgh on the 8th day of November Two thousand, before this witness Lesley Macdonald, of Longmore House, Salisbury Place, Edinburgh.

 Witness

 Director of Heritage Policy

Register on behalf of the Scottish Ministers in the Register of the County of Ross and Cromarty.


An Officer of the Scottish Ministers

MFA08958

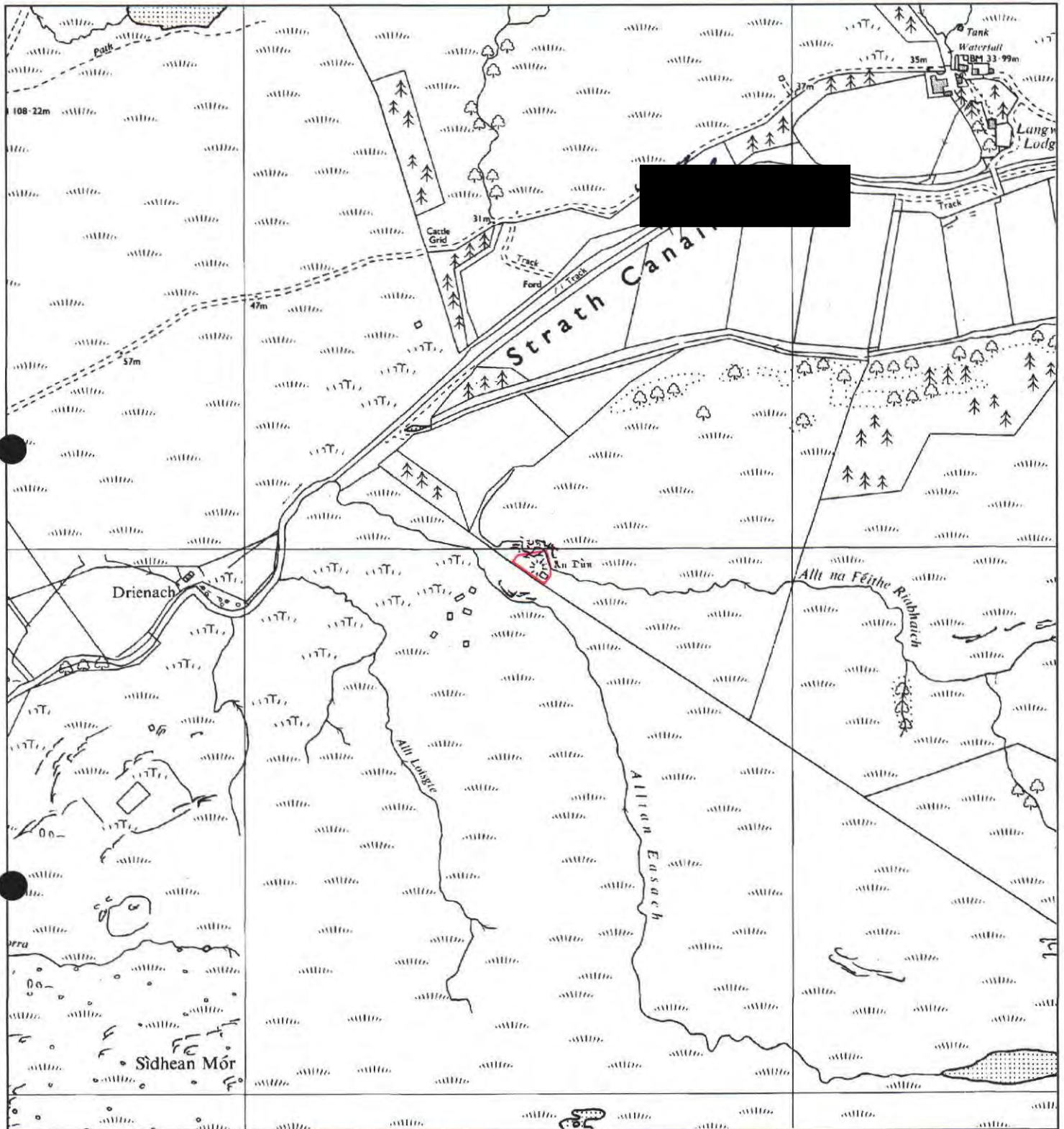
ROSS 01

221

UN REGISTERS OF SCOTLAND
GENERAL REGISTER OF SASINES
COUNTY OF ROSS & CROMARTY
FICHE 22 FRAME 43
PRESENTED & RECORDED ON 24 JAN 2001

43

This is the plan referred to in the entry in the Schedule affecting
 An Dun, dun 650m E of Drienach, Strath Canaird,
 dated: *8 November 2000* and is signed as relative thereto.



An Dun, dun 650m E of Drienach,
 Strath Canaird

Lochbroom Parish

Scheduled Area



MapSheet: NC10SE

Scale 1:10,000

100 0 100 200 300 400 500 Meters

This map is reproduced from the OS map by Historic Scotland with the permission of The Controller of Her Majesty's Stationery Office, © Crown copyright. Unauthorised reproduction infringes Crown Copyright and may lead to prosecution or civil proceedings. Licence No. GD 03135G0014.

44