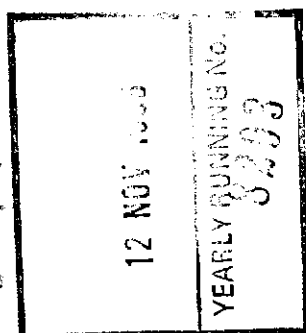


8041



THE ANCIENT MONUMENTS AND
ARCHAEOLOGICAL AREAS ACT 1979

Entry in the Schedule of Monuments

1996

Re: The Monument known as
Salisbury's Dam, dam and associated works

in the Parish of Small Isles (Rum) and
County of Inverness

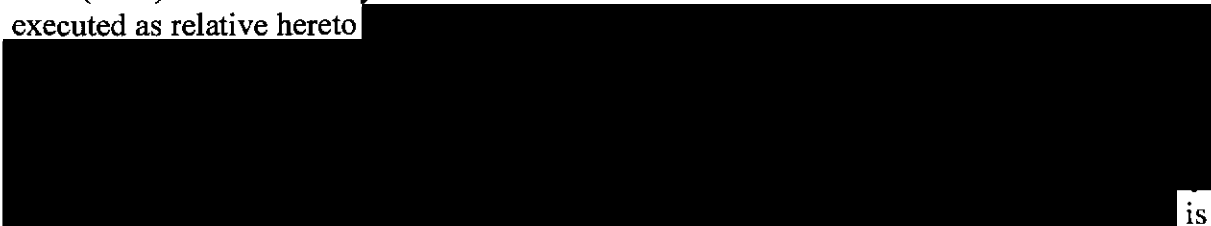
20

Search Sheet No: 8041


Solicitor
to the
Secretary of State
for Scotland
Victoria Quay
Edinburgh

THE ANCIENT MONUMENTS AND ARCHAEOLOGICAL AREAS ACT 1979
ENTRY IN THE SCHEDULE OF MONUMENTS

The monument known as Salisbury's Dam, dam and associated works comprises a massive dam and associated works including a lade built in 1847 to form a new loch. The area to be scheduled measures 390m WSW-ENE by a maximum of 65m, to include the dam, lade, building, bridge and an area around these in which traces of activities associated with the construction of the dam may survive. The monument, which lies in the Parish of Small Isles (Rum) and the County of Inverness as shown outlined in red on the Plan annexed and executed as relative hereto

 is hereby included in the Schedule of Monuments appearing to the Secretary of State for Scotland to be of national importance compiled and maintained by him under section 1(1) of the Ancient Monuments and Archaeological Areas Act 1979.

Given under the Seal of the Secretary of State for Scotland.


Assistant Secretary

Date 15 AUGUST 1996

Historic Scotland
Longmore House
Salisbury Place
EDINBURGH
EH9 1SH

Register on behalf of the Secretary of State for Scotland in the Register of the County of Inverness.


Solicitor, Edinburgh, Agent

MFA02463

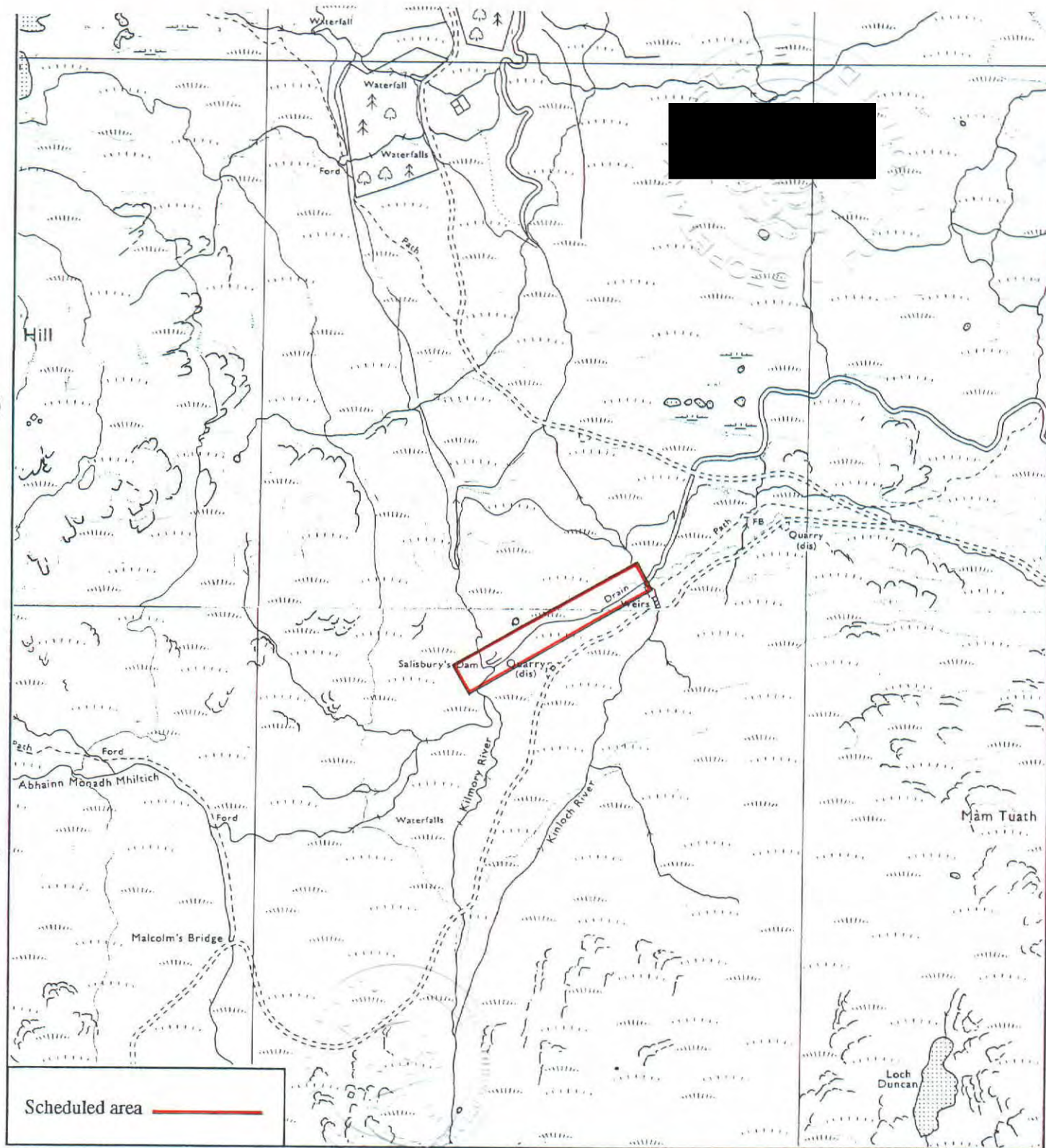
INV 96

578

REGISTERS OF SCOTLAND
GENERAL REGISTER OF SASINES
COUNTY OF INVERNESS
FICHE 578 FRAME 1
PRESENTED & RECORDED ON

12 NOV 1996

This is the plan referred to in the entry in the Schedule affecting Salisbury's Dam, dam, and associated works, dated 15 AUGUST 1990 and is signed as relative thereto.



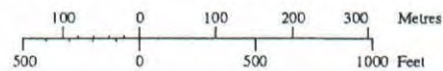
Salisbury's Dam, dam and associated works

Small Isles (Rum) Parish



Sheet: NM39NE
& NG30SE

Scale 1:10,000



© Crown copyright reserved

INV 86 578