

THE ANCIENT MONUMENTS AND
ARCHAEOLOGICAL AREAS ACT 1979

Entry in the Schedule of Monuments

1990

Re: The Monument known as
Wester Brae, hut circles
and field system

in the Parish of Resolis and
County of Ross and Cromarty

File Ref:


Solicitor
to the
Secretary of State
for Scotland
New St Andrew's House
Edinburgh

K2100931.020

[4773]

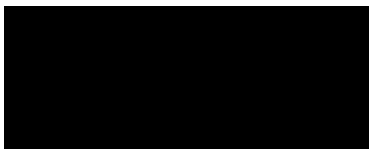
THE ANCIENT MONUMENTS AND ARCHAEOLOGICAL AREAS ACT 1979
ENTRY IN THE SCHEDULE OF MONUMENTS

The monument known as Wester Brae, hut circles and field system comprises of two hut circles and a field system. Hut circle A measures 9m in diameter within a stone wall spread to 2m wide. The entrance lies in the NW. Hut circle B survives as a low stony platform about 8m in diameter. The field system consists of stone clearance cairns and several field walls. The area to be scheduled is approximately triangular and measures 325m NW/SE by up to 180m transversely, its edges being defined in the east and SW by modern field boundaries. The monument, which lies in the Parish of Resolis and the County of Ross and Cromarty as shown outlined in red on the Plan annexed and executed as relative hereto



is hereby included in the Schedule of Monuments appearing to the Secretary of State for Scotland to be of national importance compiled and maintained by him under section 1(1) of the Ancient Monuments and Archaeological Areas Act 1979.

Given under the Seal of the Secretary of State for Scotland.





Assistant Secretary

Date 15 October 1990

Historic Buildings and Monuments, Scotland
20 Brandon Street
Edinburgh
EH3 5RA

Register on behalf of the Secretary of State for Scotland in the Register
of the County of Ross and Cromarty



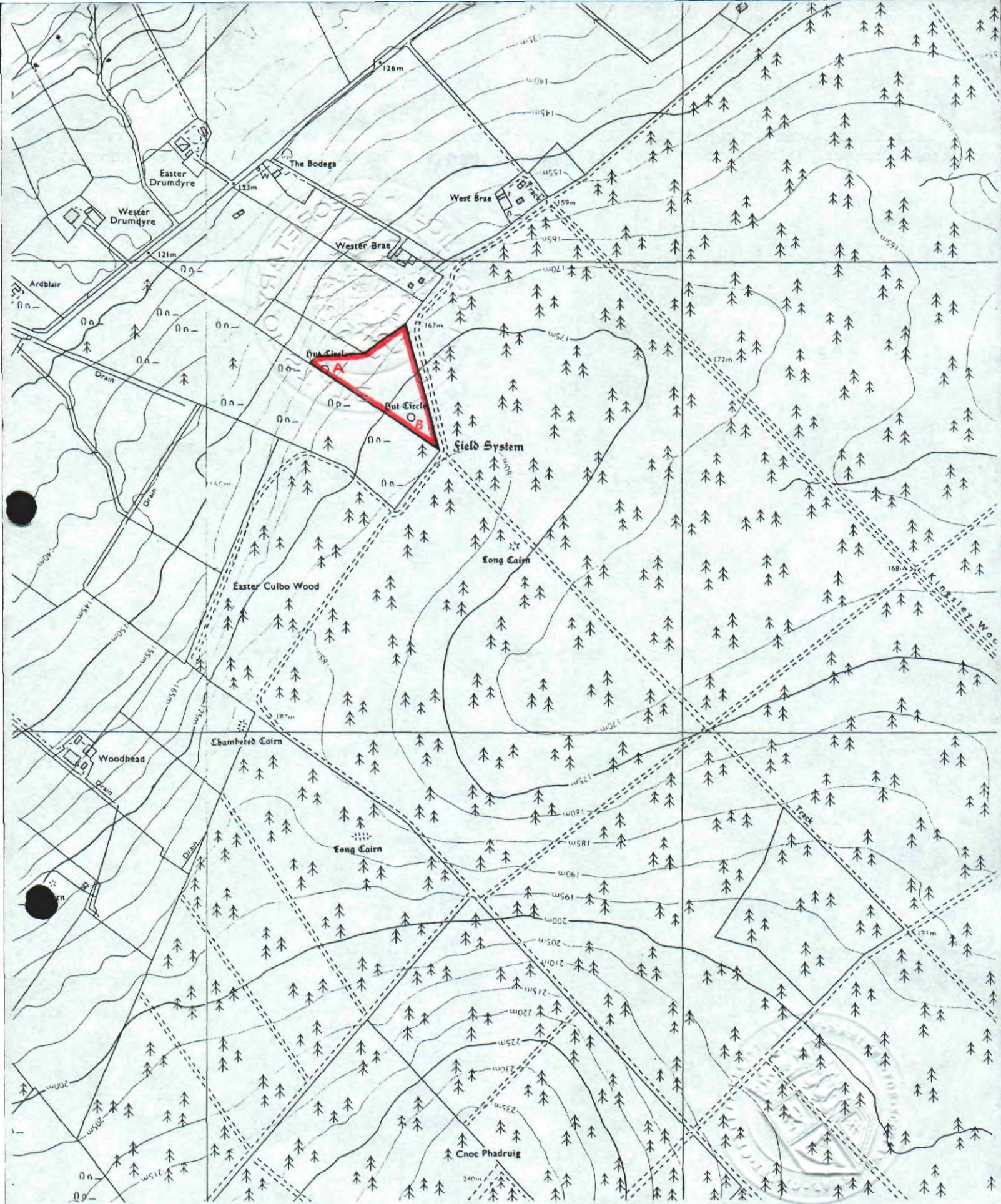
Solicitor, Edinburgh, Agent

REGISTERS OF SCOTLAND
GENERAL REGISTER OF SASINES
COUNTY OF ROSS & CROMARTY

K2100831.020

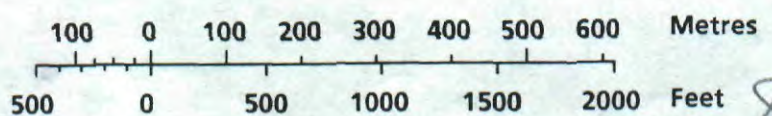
Fiche.....69..... Frame.....7.....

Presented and Recorded on 12 MAR 1991



**Wester Brae, hut circles and
field system**

Scale : 1/10 000



Resolis Parish
RC 91 069

Sheet: NH 66 SE

© Crown copyright reserved

Repro - Copyback of plan too

8