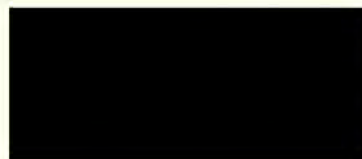


THE ANCIENT MONUMENTS AND ARCHAEOLOGICAL AREAS ACT 1979  
AMENDED ENTRY IN THE SCHEDULE OF MONUMENTS

The entry in the Schedule of monuments appearing to the Secretary of State for Scotland to be of national importance compiled and maintained by him under Section 1(1) of the above Act in respect of the monument known as Upper Borgue, broch, dated 9 November 1933 and recorded in the Division of the General Register of Sasines for the County of Caithness on 13 December 1933 is hereby in accordance with the provisions of section 1(5) of the above Act amended to describe the area of the scheduled monument as measuring 65m WSW-ENE by 50m SSE-NNW, to include the broch, wall and associated structures. The modern building to the SE of the broch is excluded from the scheduled area, as shown delineated in red on the plan annexed and executed as relative hereto.

Given under the Seal of the Secretary of State for Scotland



Assistant Secretary  
Date 11 JANUARY 1993

Historic Scotland  
20 Brandon Street  
Edinburgh  
EH3 5RA

Register on behalf of the Secretary of State for Scotland in the Register of the County of Caithness.



Solicitor, Edinburgh, Agent

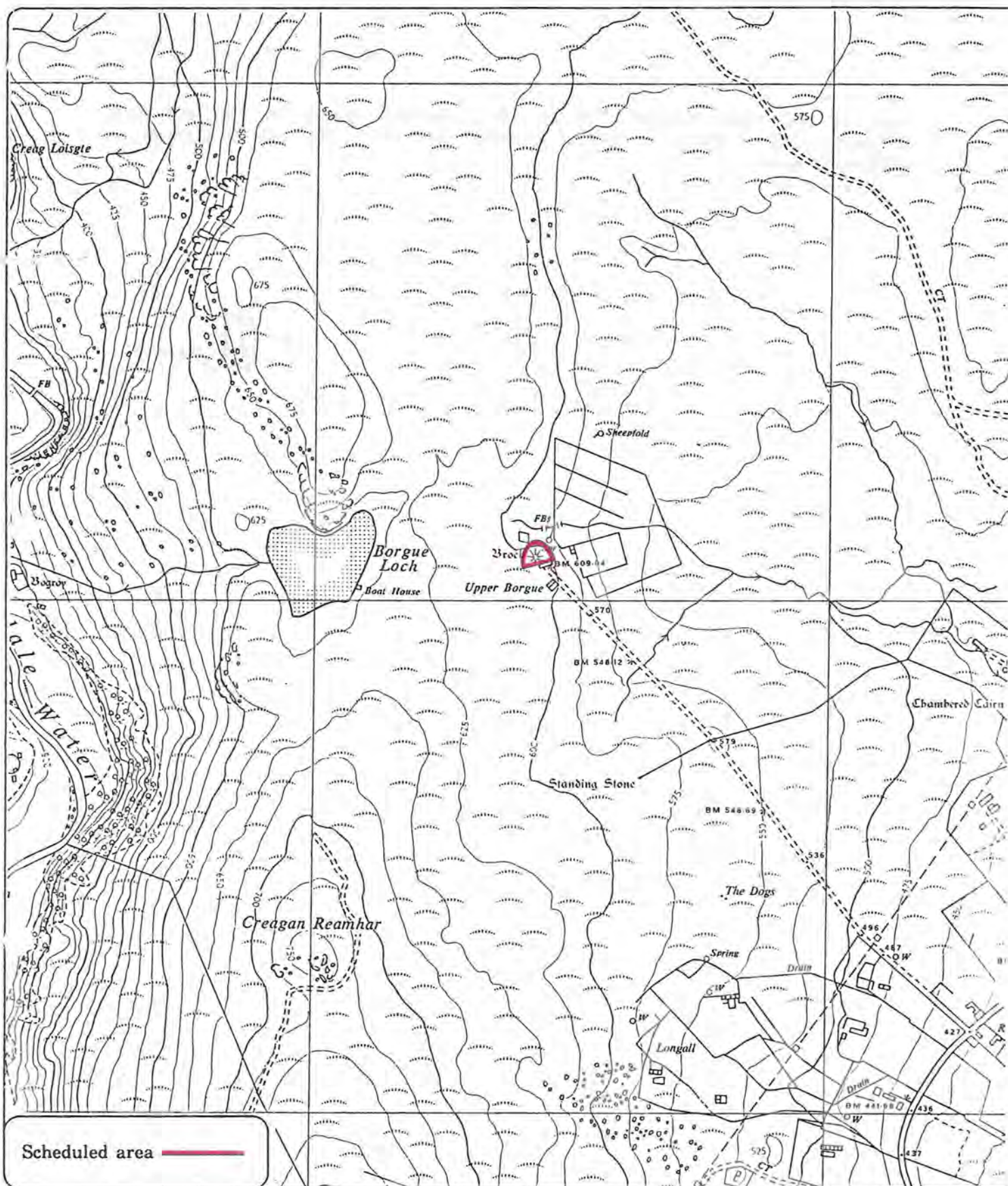
G2105505.092

CA 93 - 26

27

REGISTERS OF SCOTLAND  
GENERAL REGISTER OF SASINES  
COUNTY OF CAITHNESS  
Fiche..... 26  
Frame..... 27  
Presented and Recorded on 15 MAR 1993

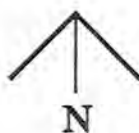




Scheduled area ———

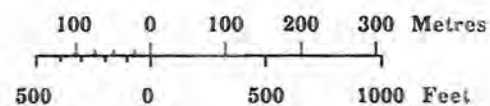
Upper Borge, broch,

Latheron Parish



Sheet : ND12NW

Scale : 1/10,000



© Crown copyright reserved

CA 83 — 26

29

①

596

15 MAR 1993	0372	FEE £22.00
No.		

THE ANCIENT MONUMENTS AND  
ARCHAEOLOGICAL AREAS ACT 1979

Amended entry in the Schedule  
of Monuments

18  
12

1993

Re: The Monument known as  
Upper Borgue, broch

in the Parish of Latheron and  
County of Caithness

File Ref:

FAS 7333

Solicitor  
to the  
Secretary of State  
for Scotland  
New St Andrew's House  
Edinburgh