

All dimensions to be checked prior to commencement of work.  
 All work must comply with current building standards as set out in The Scottish Building Standards, Technical handbooks 2016: NON-DOMESTIC.

Timber dook positions to be approved on site. Dooks to be installed by HES Stonemason.

**LIGHTING AND DISPLAY FIXINGS**

Do not fix directly to historic stone. Historic masonry must be protected.

Dook positions and quantity are approximate.

**LIGHTING FIXING POINTS**

Lighting tracks indicated in blue and green.

Suspended lighting to be fixed directly to timber dooks which are wedged into voids between masonry. See example. Use minimum number of fixings required.

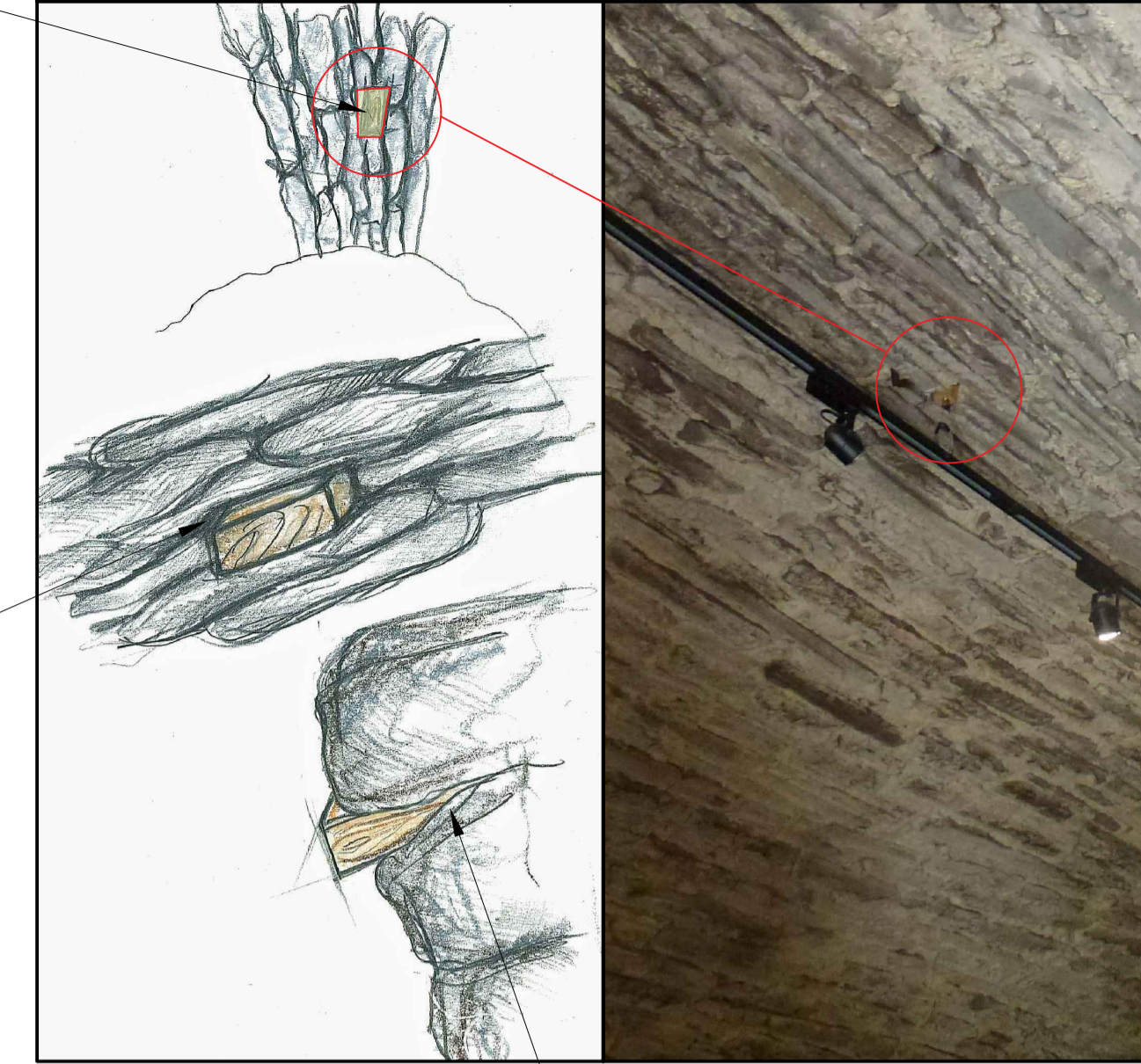
**BACK WALL DISPLAY**

Timber battens to be fixed directly to dooks not masonry.

Suspended lighting to be fixed directly into dook.

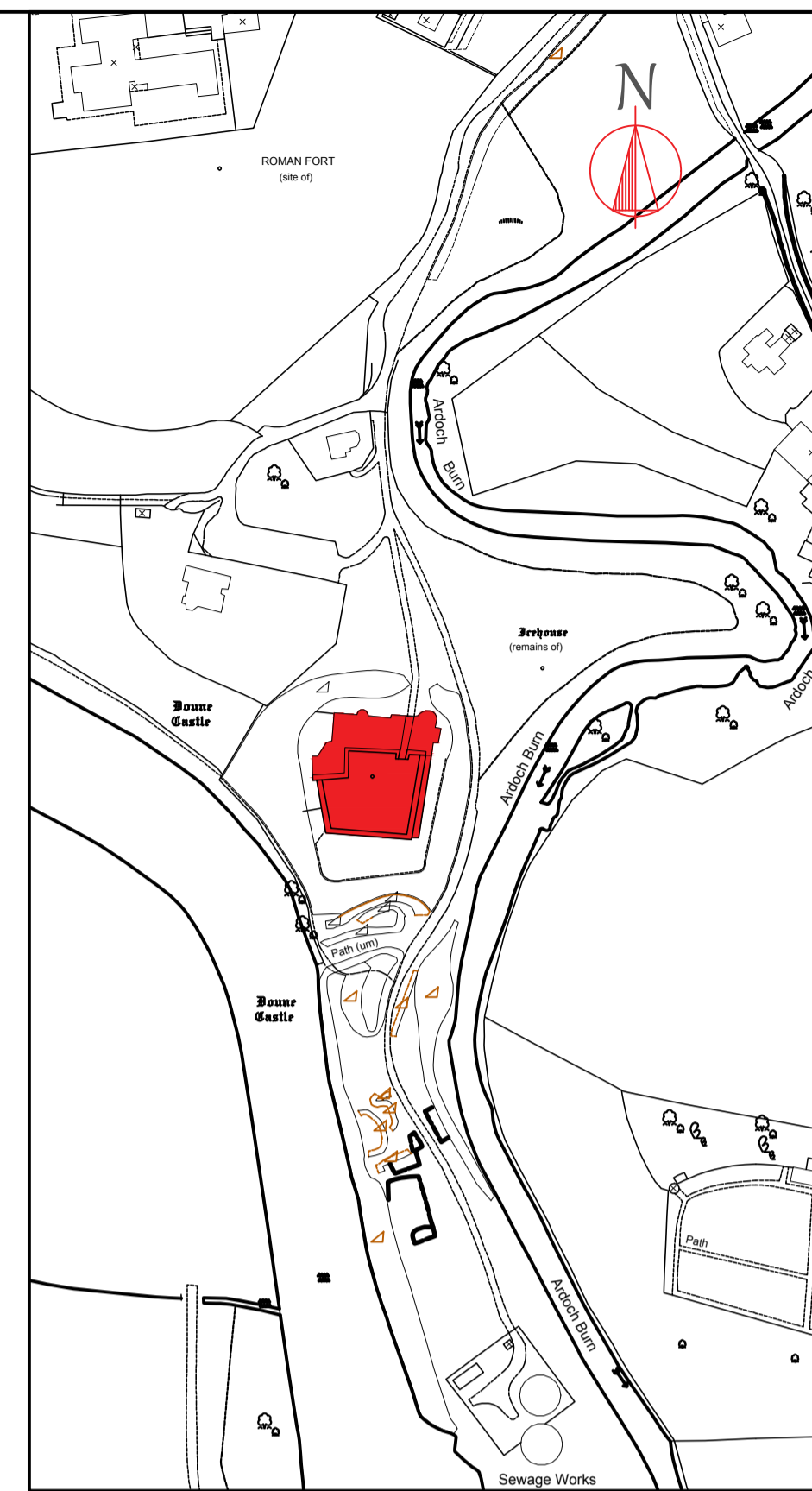
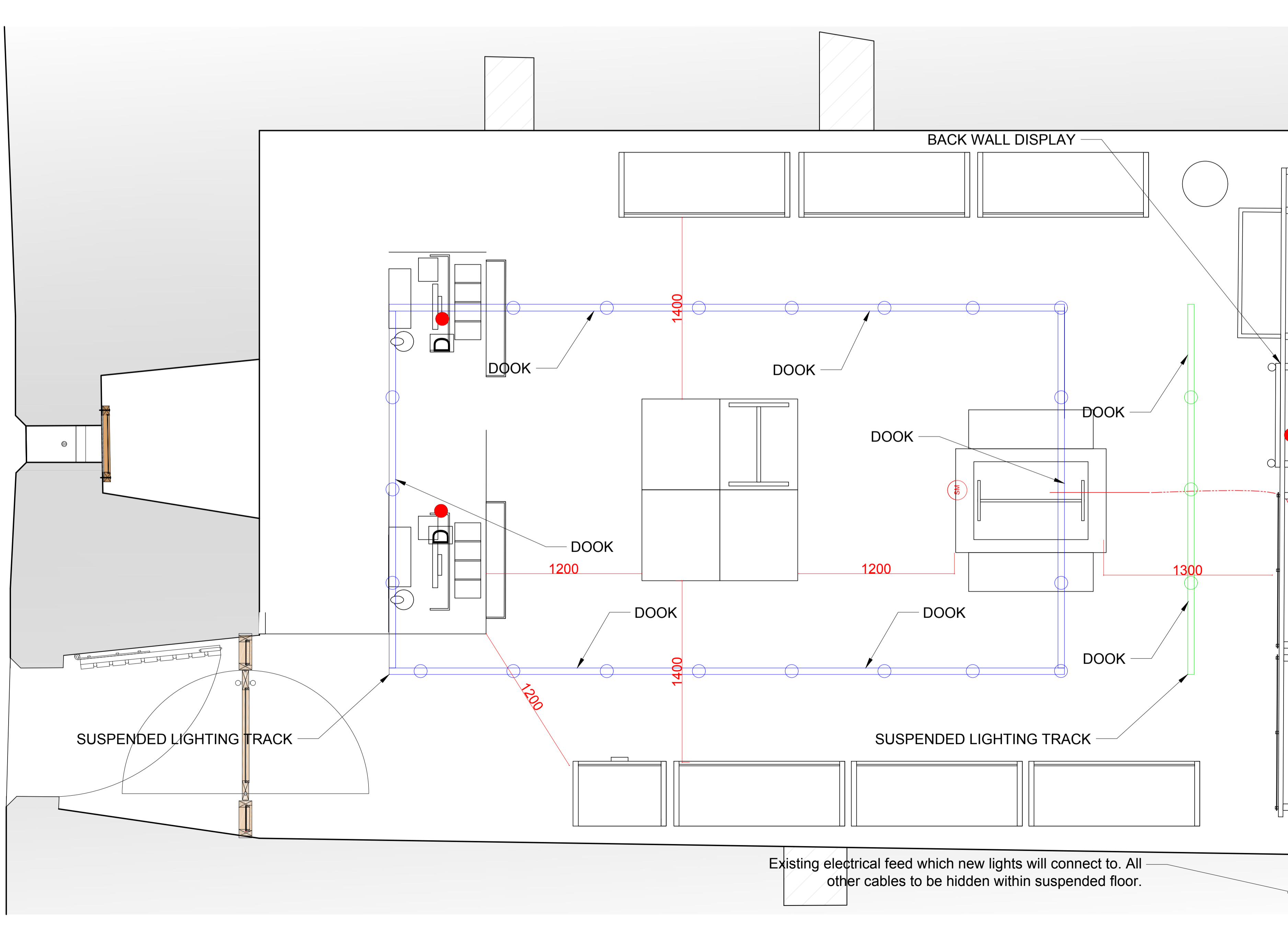
Timber dook wedged between existing masonry voids.

**Timber dook example NTS**

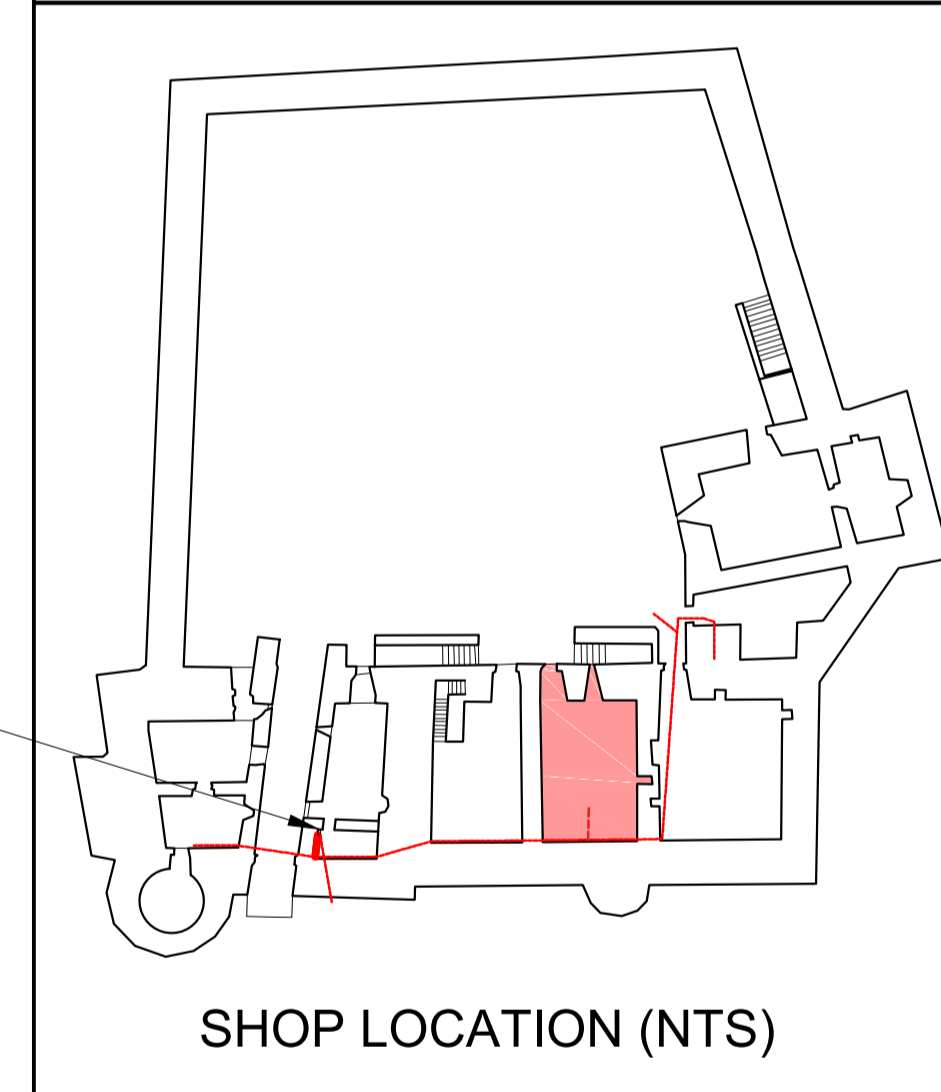


Mortar joint acting as void.

**PLAN SHOWING APPROXIMATE DOOK POSITIONS - SCALE 1:20**



**LOCATION PLAN scale 1:2500**



**SHOP LOCATION (NTS)**

Contains Historic Environment Scotland, Ordnance Survey and Aerial Imagery Data  
 © Historic Environment Scotland © Crown copyright and database rights 2016  
 Ordnance Survey [100057073] © Getmapping  
 Ordnance Survey Data  
 You are permitted to use this data solely to enable you to respond to, or interact with,  
 the organisation that provided you with the data. You are not permitted to copy,  
 sub-licence, distribute or sell any of this data to third parties in any form.



MONUMENT	Doune Castle
PROJECT	Proposed shop Fixing details



PROJECT DRAWING NUMBER	22-11-16-04
SCALE	1:20 @A1
ARCHITECT	J. MacPherson
DATE	22/11/2016
DESIGNED BY	S. Allan
ARCHIVE NUMBER	

- Proposed location of power to be hard wired
- D Data point