

CLIENT



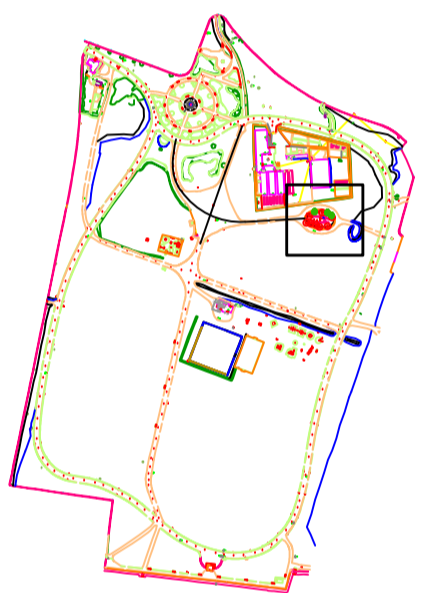
LEGEND

- ⊗ TREES TO BE REMOVED BY WDC
- EXISTING TREES TO BE RETAINED

NOTE

ALL TREES OUTSIDE OF ST SERFS CHURCH TO BE RETAINED AND PROTECTED WHERE NECESSARY DURING TREE WORKS.

LOCATION



Revision Details	By/Check	Date	Ref

PURPOSE OF ISSUE

PLANNING

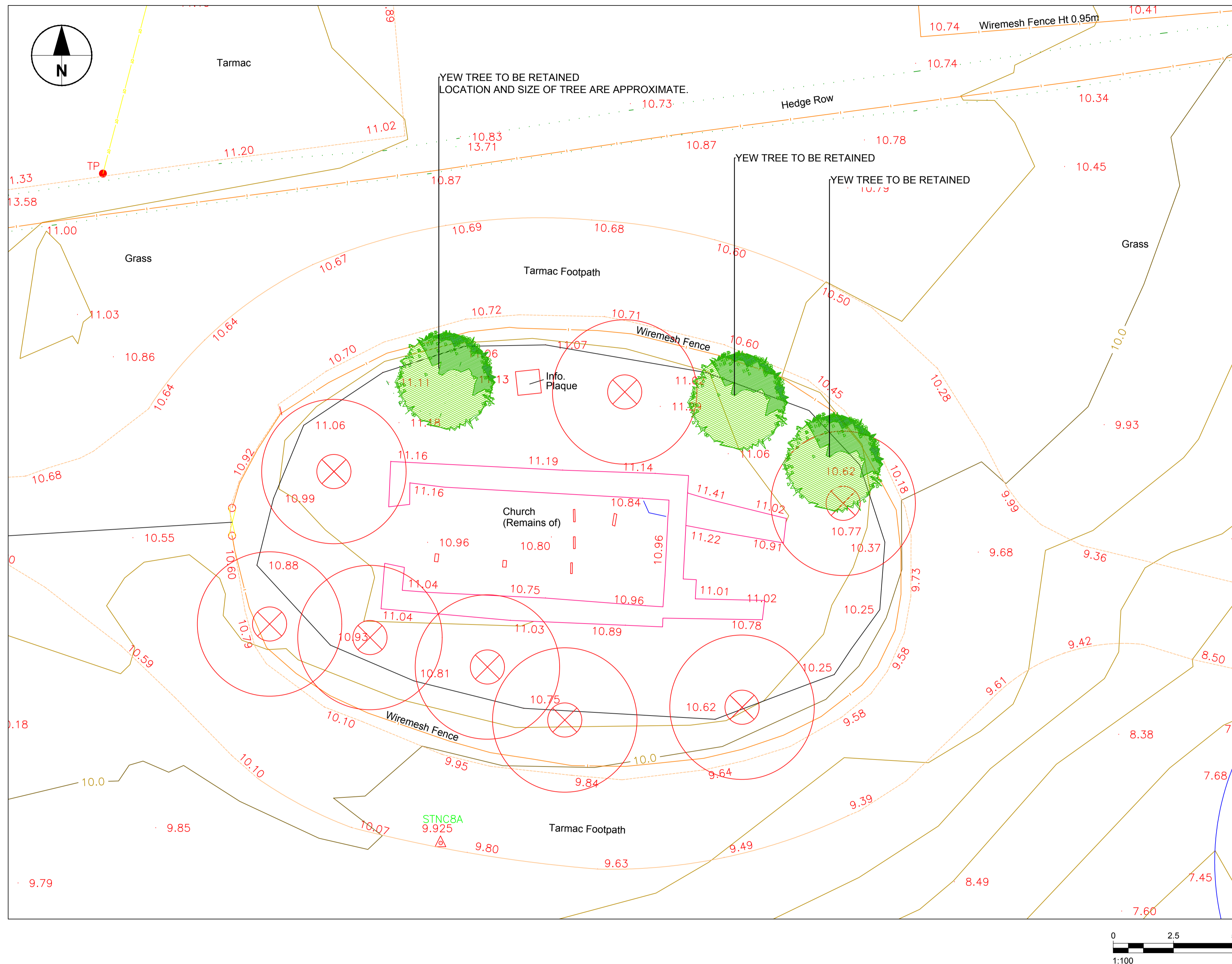
DRAWING TITLE

ST SERFS CHURCH
TREE DOWNTAKINGS

DRAWN	CHECKED	APPROVED
CS	MT	KC

DATE	SCALE AT A1
18.11.2016	1:100

DRAWING NUMBER	REV
60516173_640.1	-



This drawing has been prepared for the use of AECOM's client. It may not be used, modified, reproduced or relied upon by third parties, except as agreed by AECOM or as required by law. AECOM accepts no responsibility, and denies any liability, whatsoever, to any party that uses or relies on this drawing without AECOM's express written consent. Do not scale this document. All measurements must be obtained from the stated dimensions.