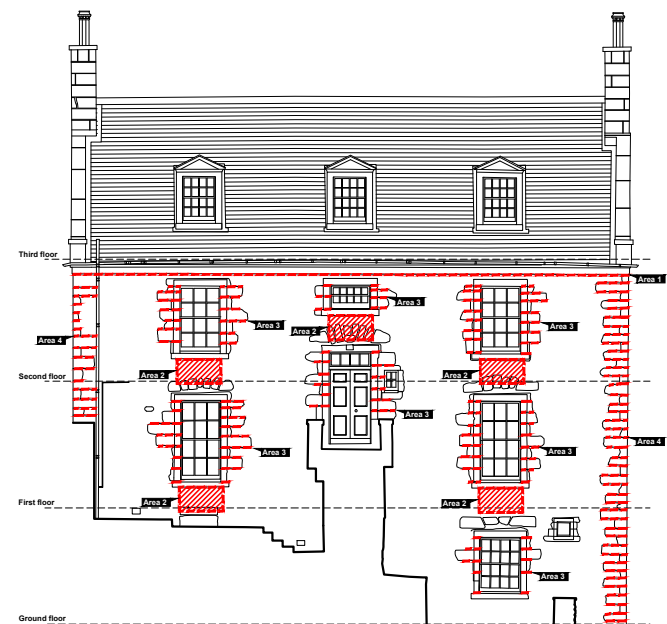


WORK DONE UNDER PREVIOUS VARIATION TO SMC

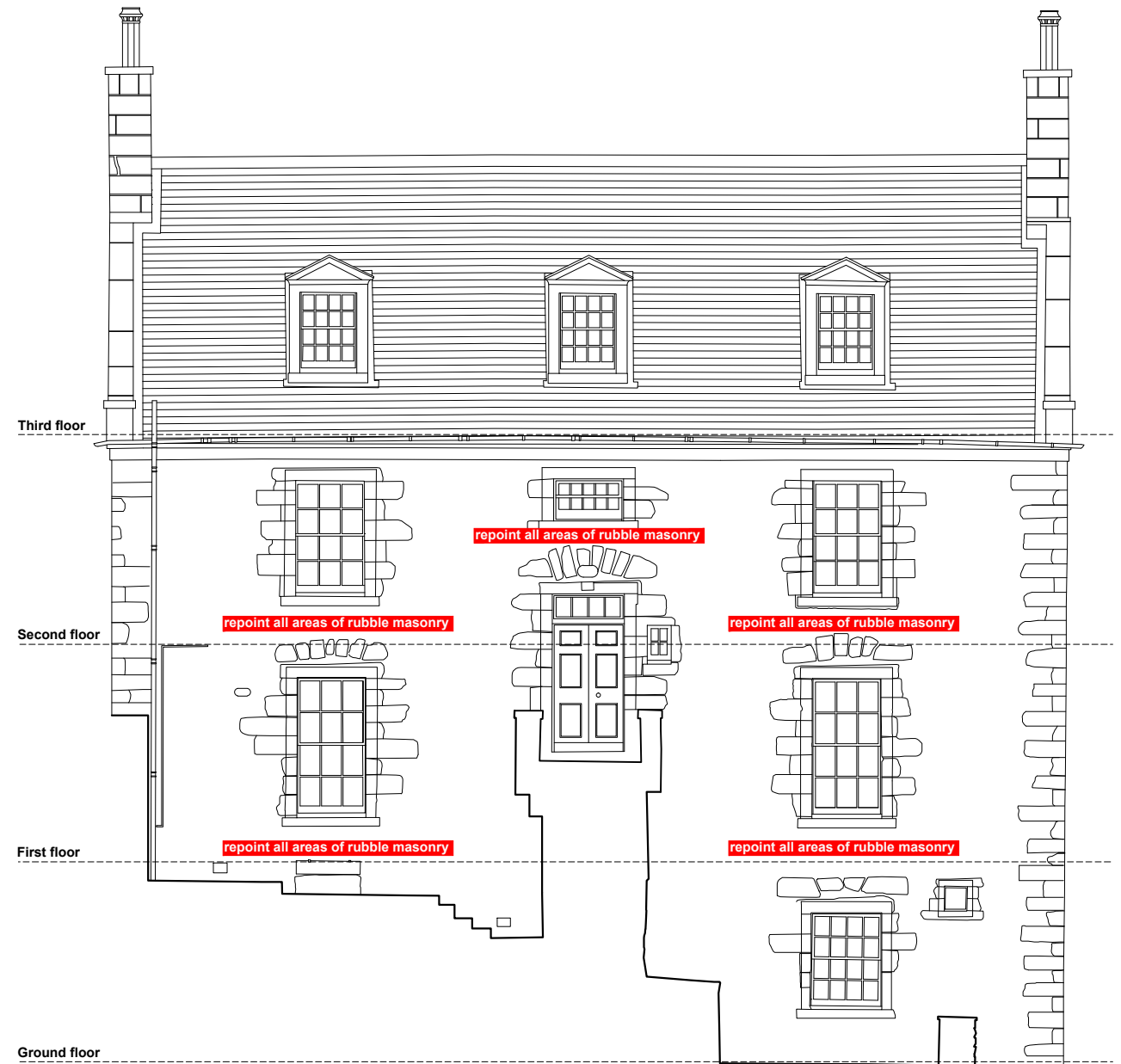


NORTH ELEVATION



Image 1
22 September 2010, the north elevation

WORK PROPOSED



NORTH ELEVATION

Location of the masonry requiring repair
north elevation

Description of the masonry requiring repair
original buff sandstone and grey whinstone rubble units, pointed with non-original cementitious mortar

Condition of the masonry requiring repair
the non-original cementitious mortar pointing at joints between masonry units is decayed in places, ie loose, cracked, missing etc

Proposals for the masonry requiring repair
rake out areas of decayed non-original cementitious mortar pointing and replace with new lime mortar pointing at areas shown adjacent, as follows...

Schedule of masonry repairs
carefully rake out mortar joints to remove decayed cementitious mortar pointing from walls

new building and pointing mortar mix to be 2 parts Otterbein NHL5 hydraulic lime to 5 parts Cambusmore sand, by weight

SMC

MONUMENT	DUMBARTON CASTLE
PROJECT	Masonry Repairs at Governor's House



PROJECT DRAWING NUMBER	North Elevation Proposals	
SCALE	NTS	ARCHITECT I Lambie
DATE	June 2016	DRAWN BY S Bain
ARCHIVE NUMBER	193-107-536	