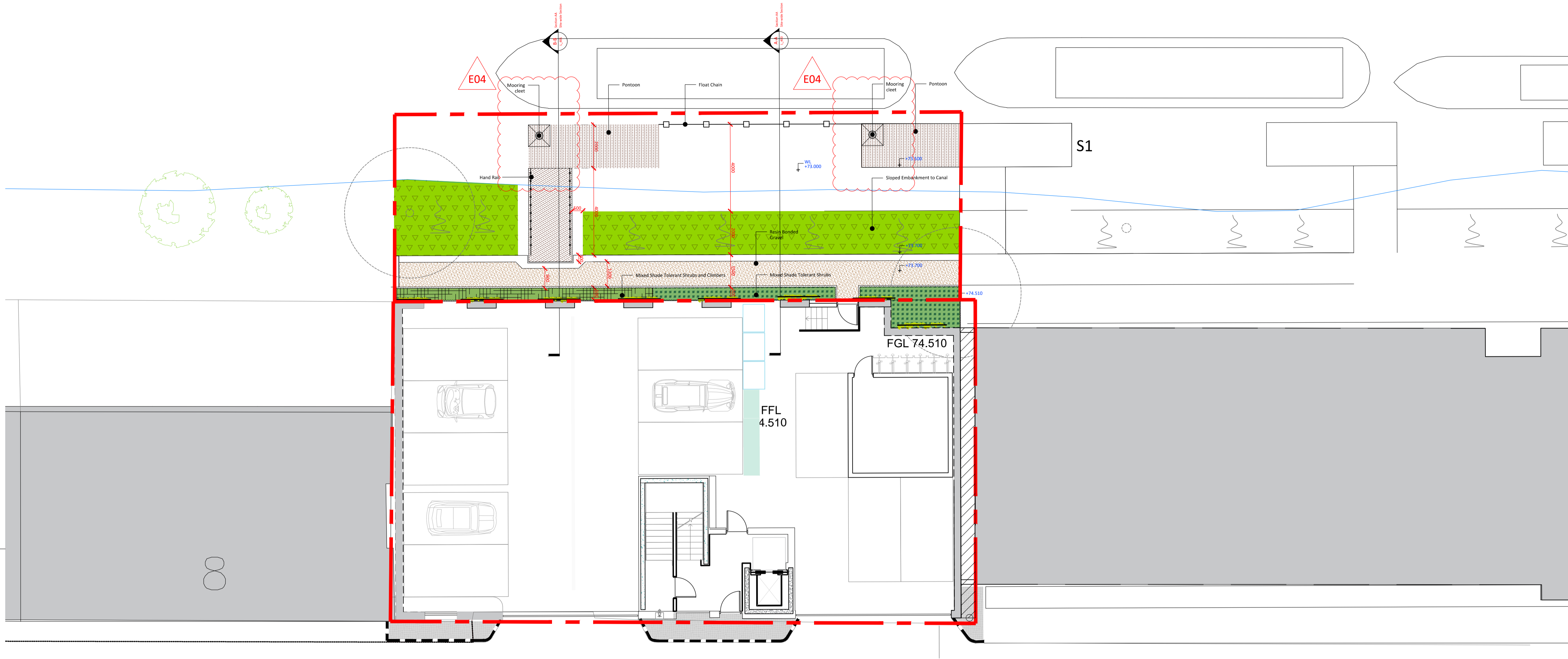


Union Canal



Horne Terrace

- NOTES:
1. This drawing is to be read in conjunction with all other drawings and specifications.
 2. Do not scale off this drawing. Written dimensions to be taken only.
 3. Any discrepancies found between this drawing and other drawings, specifications or other associated documents must be referred to the Landscape Architect prior to work commencing.
 4. This drawing must not be copied in whole or in part without prior written consent of HarrisonStevens Limited
 5. Survey information is based upon the Topographical Survey and OS data where referenced.

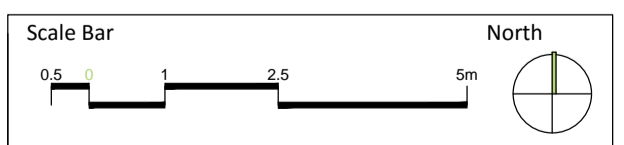
Issue	Revision	By	Date
E04	Service bollards removed, Approval	mh	15.11.16
E03	Revised for Approval	mh	11.11.16
E02	Revised for Planning Issue	mh	01.09.16
E01	Issued for Planning	mh	25.05.16
E00	First Issue for team comment	mh	24.05.16
Issue	Revision	By	Date

HarrisonStevens
 landscape architecture & urban design
 Elmwood House, 40-44 Thistle Street,
 Edinburgh, EH2 1EN, Scotland, UK
 +44 (0) 131 226 2672 www.harrisonstevens.co.uk

Client:
 AMA (Newtown) Ltd.

Project:
 9-11 Horne Terrace
 Edinburgh

Drawing Title
 Landscape Proposals
 General Arrangement



Date 20.05.16 Status APPROVAL
 Drawn mh Checked ms Scale 1:100@A1

Dwg. No. 16030_L_200 Rev. E04

Resin Bonded Gravel Footpath

- 1.5m wide
- Spray and Chip gravel surface onto bitumen base, to match towpath on north side of the canal.
- Edge kerb - 50 x 150mm standard pressed kerb.

Asphalt Footpath/road frontage

- Hot Rolled Asphalt with white limestone chippings
- Detailed to engineers specification

Moorings

- Supplied through Scottish Canals
- Mooring point to east, stainless steel cleats secured into structure below the deck.

Mixed Shade Tolerant Species Shrubs

- 5L Pot Grown, 50-60cm unless stated
- Even mix of: Dryopteris cycadina, Dryopteris filix-mas, Dryopteris delatata, Astilbe fanal, Glyceria maxima and Koeleria glauca
- Plant two offset rows 300mm centres, planting trench 450mm deep x 500mm wide. Place 75mm depth bark mulch.

Existing Trees removed

Double Handrail

- To be a standard Intermarine detail

Timber Pontoon/Jetty

- 2m wide to Scottish Canal design and approval
- Supply - Intermarine

Flush Kerb

- 145 x 145mm kerb laid flush
- Reclaimed whinstone cropped kerb
- See engineers specification

Floater chain buffer to banking

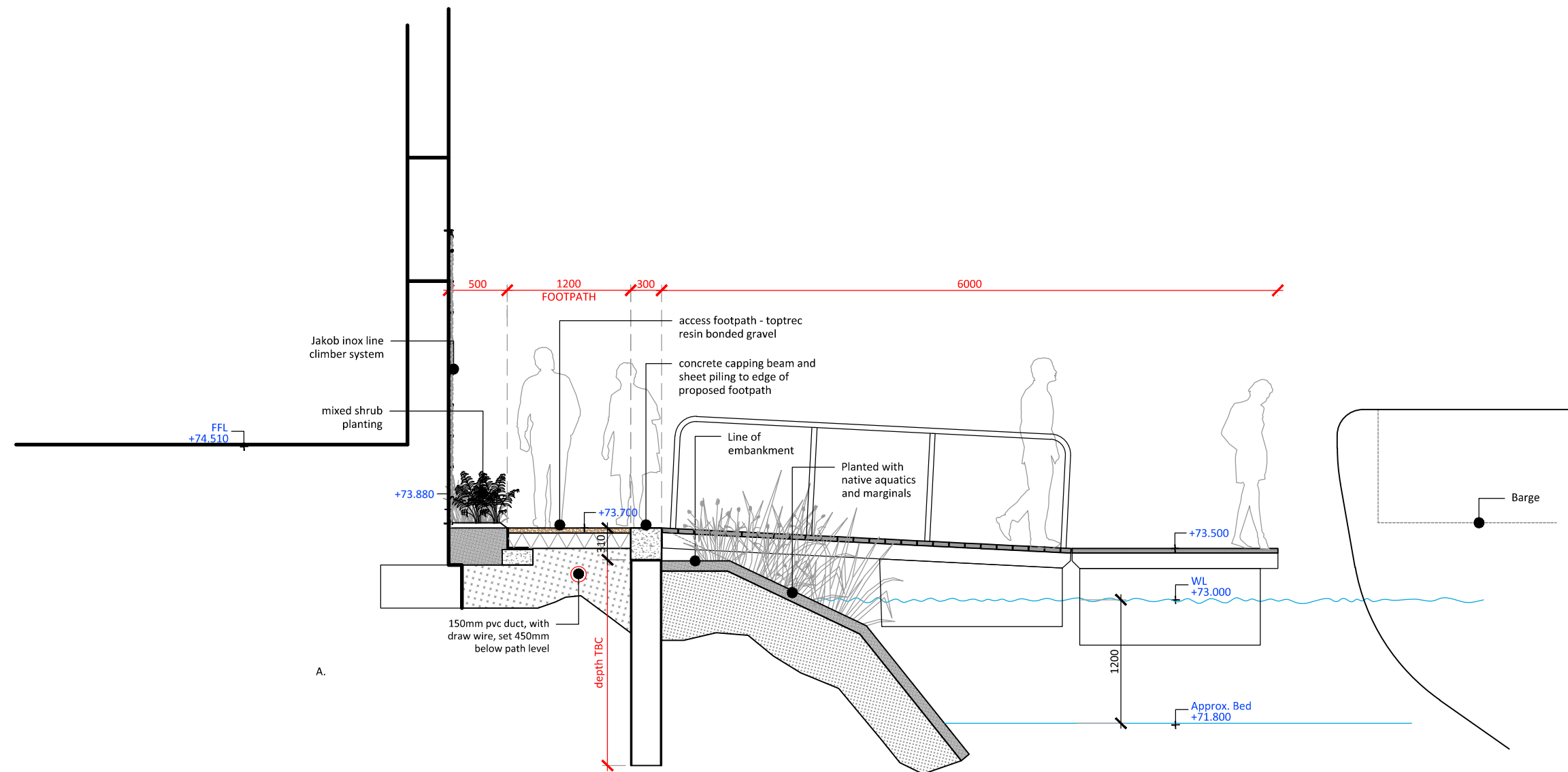
- Supplied through Scottish Canals
- Strung between pontoons and secured to base structure of pontoon.

Mixed Shade Tolerant Species Shrubs

- As above with the addition of Lonicera americana (Honeysuckle) climber
- 80/100, 3L pot grown, with cane support, planted at 500mm centres along building elevation and trained onto initial line wire climbing system - Jakob Inox Line

Sloped Embankment to Canal

- Existing vegetation retained where possible.
- Overseeded with native marginal edge grass mix.
- At the margins adjacent to the water edge plant native reed planting, 1L pot grown with 6plants/m²: Phragmites australis (common reed) Typha angustifolia (lesser bullrush) Glyceria maxima Variegata (reed sweet grass)



A.

HarrisonStevens

landscape architecture & urban design
 Elmwood House, 40-44 Thistle Street,
 Edinburgh, EH2 1EN, Scotland, UK
 +44 (0) 131 226 2672 www.HarrisonStevens.co.uk

Client:
 AMA (Newtown) Ltd.

Project:
 9-11 Horne Terrace
 Edinburgh

Drawing Title
 Landscape Proposals
 Section A-A

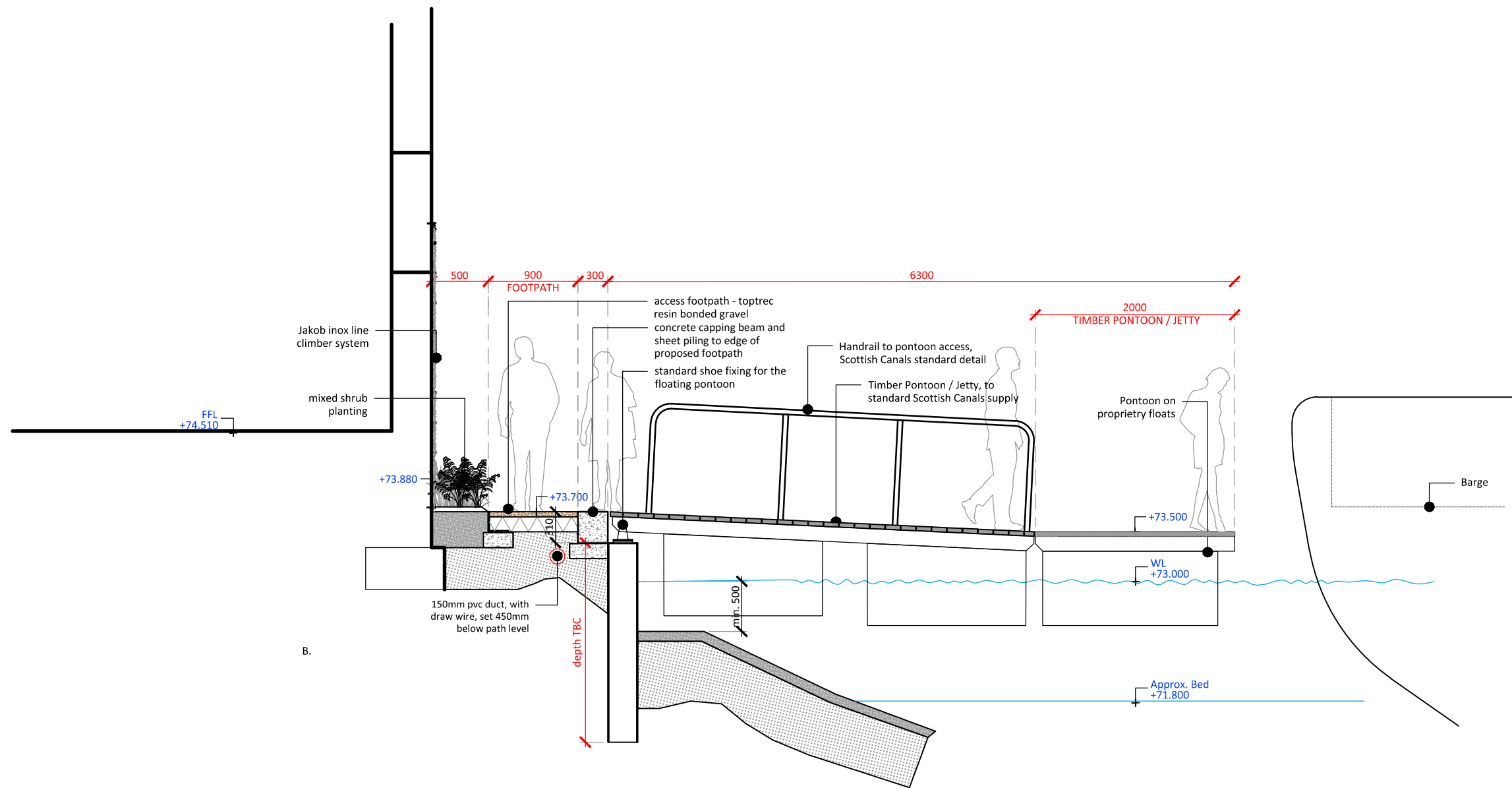
Issue	Revision	By	Date
E00	First to team for Comment	mh	24.05.16
E01	Issued for Planning	mh	25.05.16
E02	Revised for Approval	mh	11.11.16
E03	Duct added, issued for Approval	mh	15.11.16

Scale Bar
 500 0 500 1m 2m

Date 20.05.16 Status **APPROVAL**

Drawn mh Checked ms Scale 1:50@A3

Dwg. Nr. 16030-L-400 Rev. E03



HarrisonStevens

landscape architecture & urban design

Elmwood House, 40-44 Thistle Street,
Edinburgh, EH2 1EN, Scotland, UK

+44 (0) 131 226 2672 www.HarrisonStevens.co.uk

Client:

AMA (Newtown) Ltd.

Project:

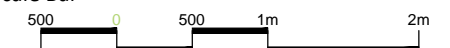
9-11 Horne Terrace
Edinburgh

Drawing Title

Landscape Proposals
Section B-B

Issue	Revision	By	Date
E00	Issued for Approval	mh	11.11.16
E01	Duct added, issued for Approval	mh	15.11.16

Scale Bar



Date 08.11.16 Status APPROVAL

Drawn mh Checked ms Scale 1:50@A3

Dwg. Nr. 16030-L-401 Rev. E01