



AMENDED ENTRY

3498

The Ancient Monuments and Archaeological Areas Act 1979

Amended entry in the schedule of monuments

Historic Environment Scotland in exercise of the powers conferred on it by section 1(1) of the Ancient Monuments and Archaeological Areas Act 1979 hereby amends the entry in the statutory schedule of monuments as set out below.

The monument known as **Glenn Beag or Hell's Glen, kiln, structures and rock art, 890m NE of Cruach nam Mult** comprises the remains of a grain drying kiln and associated structures likely to date to the 17th century or earlier and three earthfast boulders bearing rock art motifs, likely to date from the fourth millennium BC and later. The monument is visible as a small complex of turf-covered drystone structures and earthworks and three separate carved surfaces together with associated buried features and deposits. The monument is located on the low-lying south side of Gleann Beag or Hell's Glen at approximately 135m above sea level in a partly open area of mature conifer woodland.

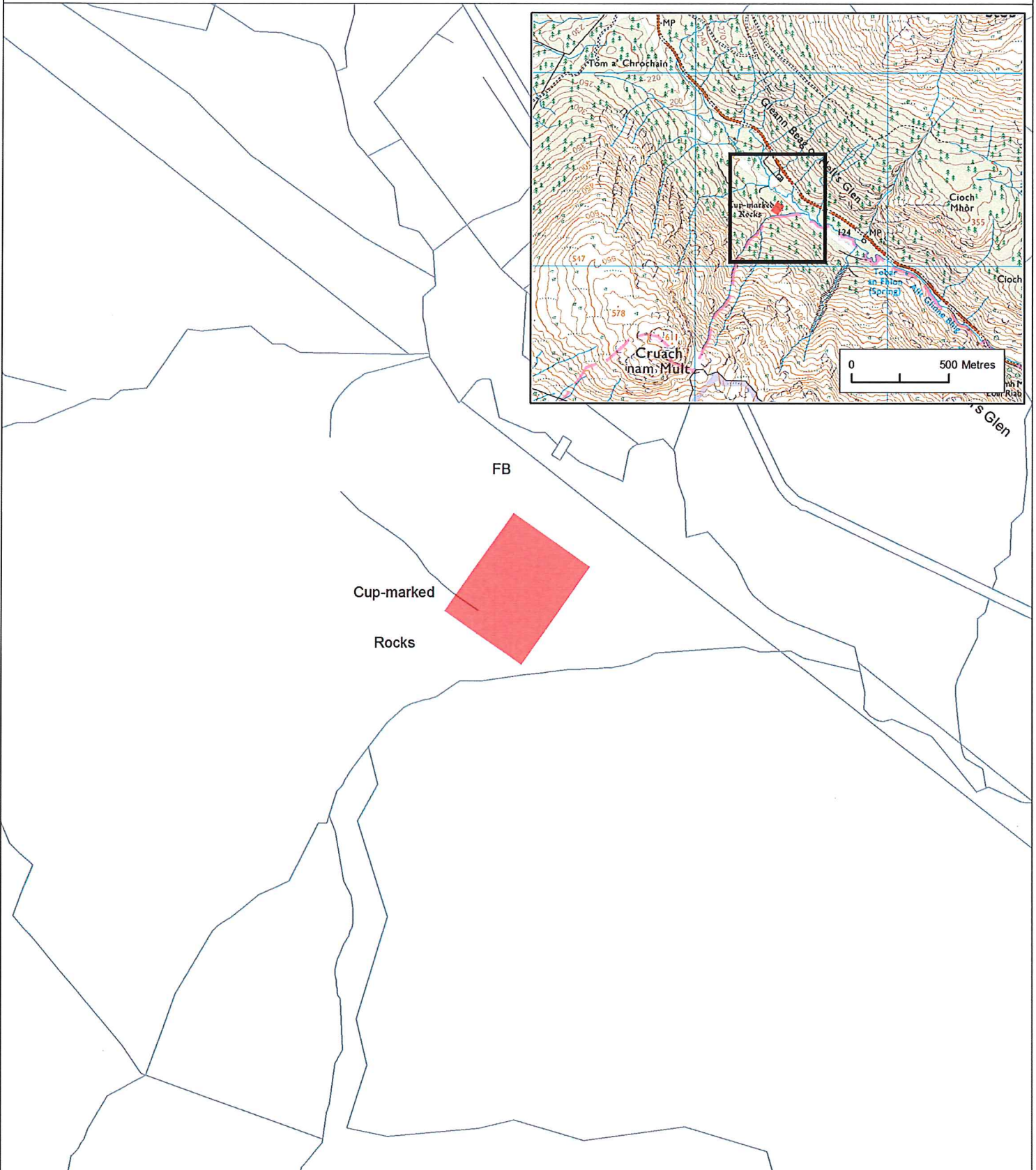
The scheduled area includes the remains described above and an area around within which evidence relating to the monument's construction, use and abandonment is expected to survive.

The monument, which lies in the Parish of Lochgoilhead and Kilmorich and the County of Argyll as shown in red on the plan annexed and executed as relative hereto.

This entry supersedes the Entry in the Schedule of Monuments for the monument known then as **Deserted Settlement at Gleann Beag or Hell's Glen** as referred to in the Certificate of Service of Notice by the Secretary of State for Scotland in respect of the monument dated 20 August 1974 and recorded in the General Register of Sasines for the County of Argyll on 8 October 1974.

Dated: 11 / 10 / 2016

This is the plan referred to in the entry in the Schedule affecting:
 Glenn Beag or Hell's Glen, kiln, structures and rock art, 890m NE of Cruach nam Mult



Designation Reference: SM3498
 Glenn Beag or Hell's Glen, kiln,
 structures and rock art, 890m NE of
 Cruach nam Mult

Parish: Lochgoilhead and Kilmorich
 Scheduled Area

N

 Map Sheet:
 NN10NE

0 25 50 75 100 125 m Scale: 1:2,500

Contains Historic Environment Scotland and Ordnance Survey Data © Historic Environment Scotland © Crown copyright and database rights 2016 Ordnance Survey [100057073]
Ordnance Survey Data
 You are permitted to use this data solely to enable you to respond to, or interact with, the organisation that provided you with the data. You are not permitted to copy, sub-licence, distribute or sell any of this data to third parties in any form.