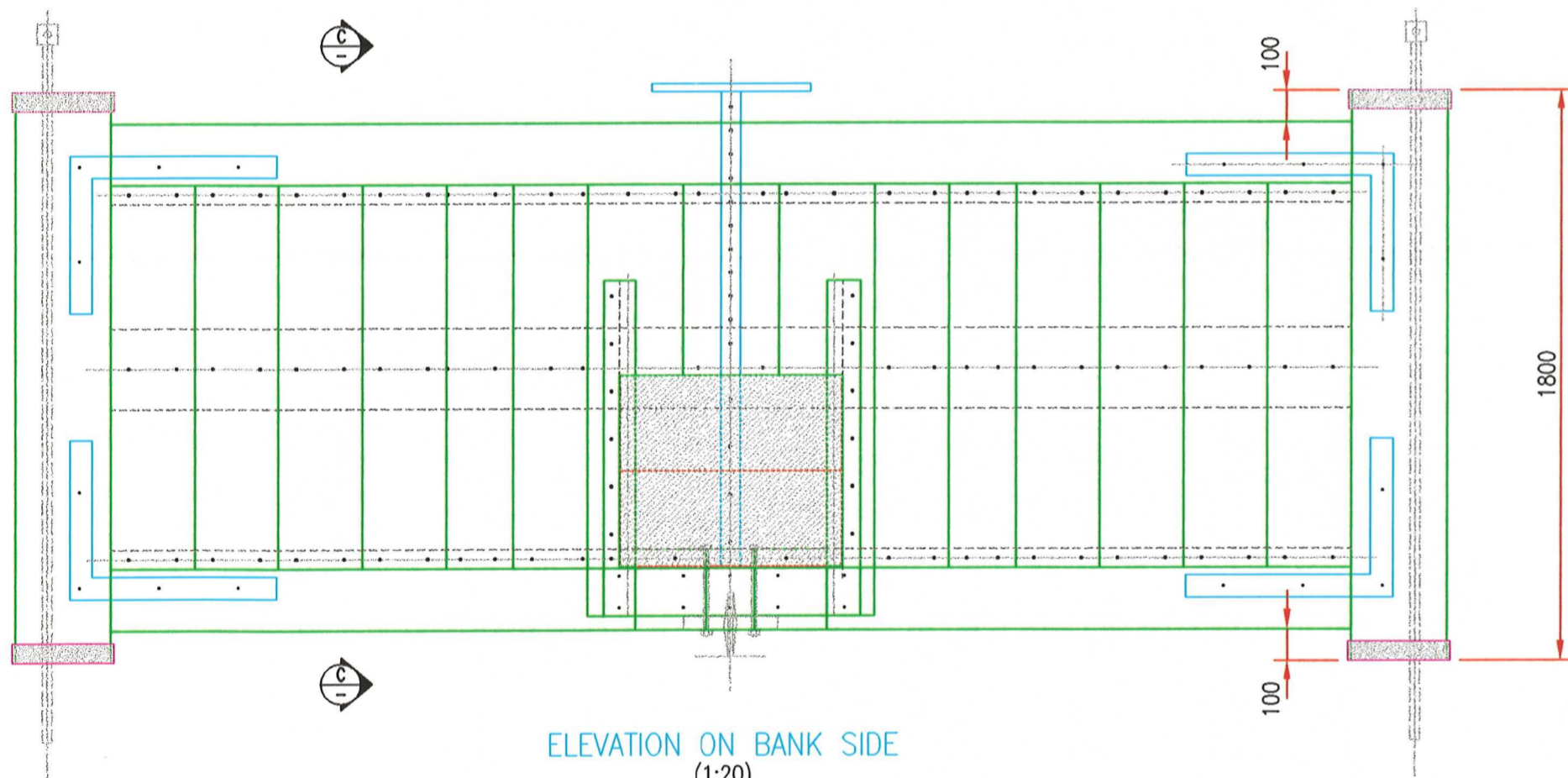
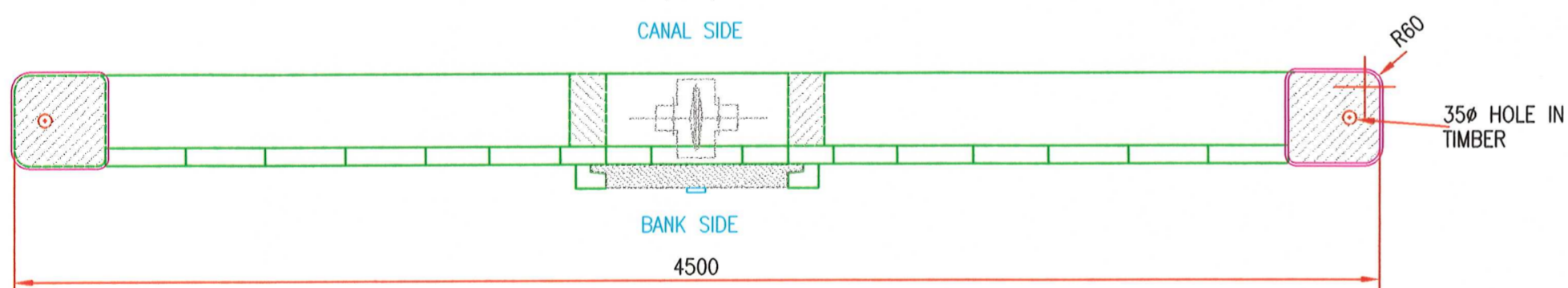


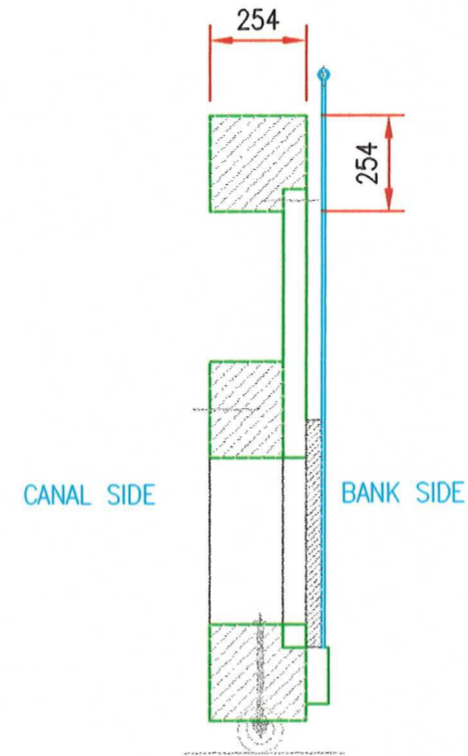
ELEVATION ON CANAL SIDE
(1:20)



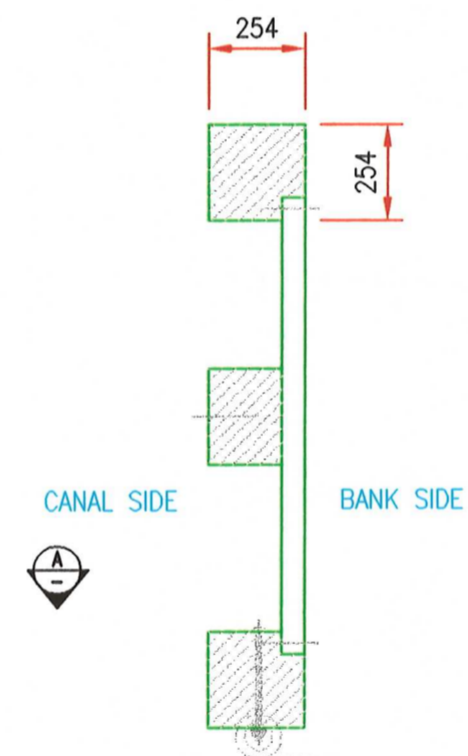
ELEVATION ON BANK SIDE
(1:20)



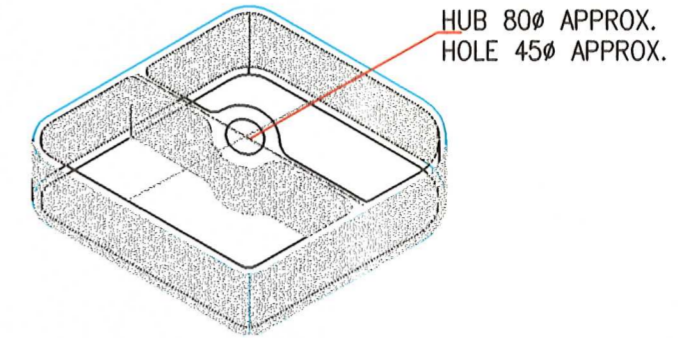
PLAN ON A - A
(1:20)



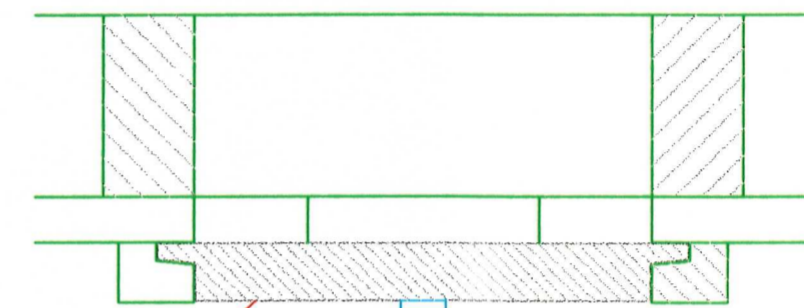
SECTION B - B
(1:20)



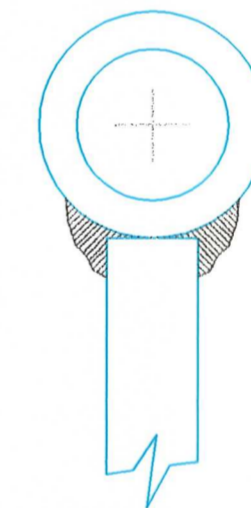
SECTION C - C
(1:20)



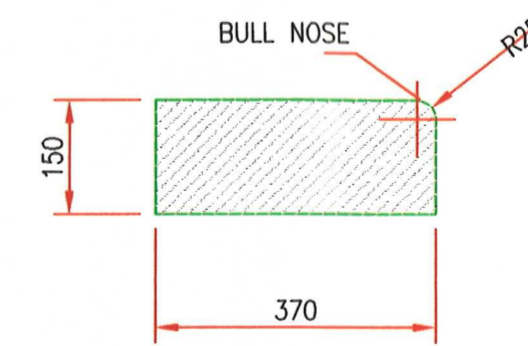
DETAIL OF WROUGHT IRON
END POST BAND WITH
CROSS MEMBER TO PIVOT PIN
(1:10)



SLUICE
600x600 MIN.
SLUICE DETAIL
(1:10)



SLUICE HANDLE DETAIL
(1:1)



RESTRAINING BEAM
(LENGTH 5150mm)
(1:1)

NOTES:-

1. WOODEN FRAMED GATE WITH PEGGED & BRACED MORTISE & TENON JOINTS.
2. WOODEN BOARDS, APPROX. 60mm THICK
3. WOODEN PEGS ARE APPROX. 30Ø
4. IRON BRACKETS APPROX. 70mm WIDE.
5. PIVOT PINS WROUGHT IRON 30Ø SHANK APPROX. 2200lg. HEADS APPROX. 65sq. WITH 45Ø HOLE
6. GUIDE WHEEL & BASE PLATE ALL IRON. THE SHAFT TO BE FITTED INTO EYEBOLTS THE WHEEL RUNS ON A MASONRY CURD.
7. WOODEN SLUICE GATE WITH IRON BAR
8. SLUICE GATE GUIDE & SUPPORT ALL WOOD.
9. END POST BAND/COLLAR SEE DETAIL ABOVE.
10. MATERIALS :-
MAIN BEAMS :- GREENHEART
PLANKING :- NORTH AMERICAN DOUGLAS FIR

REV	DATE	DESCRIPTION	SIGN	APP.
R	APR '01	AS BUILT	A.W.W.	G.Mc.B.
G	28/08/99	DIAMETER OF HOLE FOR PIVOT PINS ADDED	A.W.W.	G.Mc.B.
F	11/08/99	VERTICAL BOARDS NOTCHED INTO MAIN CROSS TIMBER BEAMS	A.W.W.	
E	03/08/99	WHEEL RECESS ADDED	L.M.D.	
D	15/07/99	MAIN BEAM & PLANKING TIMBER TYPE AMENDED	A.W.W.	
C	04/06/99	DETAIL OF RESTRAINING BEAM ADDED	A.W.W.	
B	04/06/99	NOTE 10 :- TIMBER AMENDED FROM EUROPEAN OAK TO FRENCH OAK	A.W.W.	
A	01/06/99	NOTE 10 ADDED - NOTING GRADE OF MATERIAL AS EUROPEAN OAK	A.W.W.	

ENGINEER SCOTLAND
CANAL HOUSE
APPLECROSS STREET
GLASGOW G4 9SP

UNION CANAL
BRIDGE 59 FALKIRK, NS894,782
WOODEN SAFETY GATE

DRAWN BY	A.W.W.	SCALES :-	1:20 1:10 1:1	DATE	JULY '00
CHECKED BY		DRAWING No.	WSG3	REV.	R
APPROVED BY					