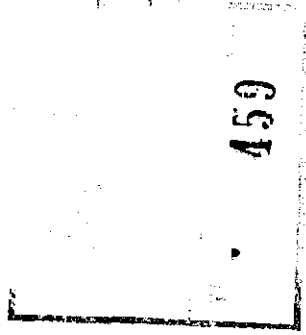


AND

17



THE ANCIENT MONUMENTS AND  
ARCHAEOLOGICAL AREAS ACT 1979

Entry in the Schedule of Monuments

1998

Re: The Monument known as  
Burleigh Castle

in the Parish of Orwell and  
County of Kinross


6

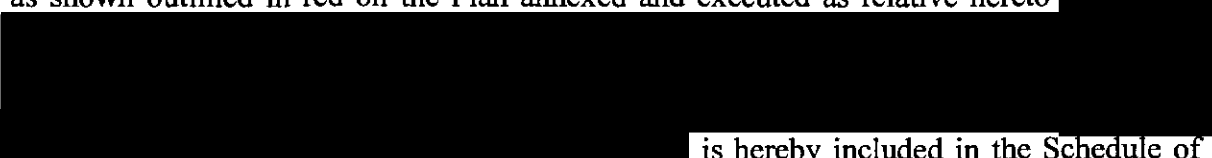
Search Sheet No: 17

Solicitor  
to the  
Secretary of State  
for Scotland  
Victoria Quay  
Edinburgh


MFA00175

THE ANCIENT MONUMENTS AND ARCHAEOLOGICAL AREAS ACT 1979  
ENTRY IN THE SCHEDULE OF MONUMENTS

The monument known as Burleigh Castle comprises Burleigh Castle, a towerhouse of Medieval date some 11m by about 9m externally, to which is attached the surviving W wall and SW tower of an enclosure. To the W of the castle are the remains of a substantial ditch, surviving as an irregular turf-covered depression some 25m long by up to 8m wide. The area to be scheduled encompasses the remains described above and an area around them in which traces of associated activity may be expected to survive. It is sub-rectangular with maximum dimensions of 50m NNW-SSE by 50m transversely. Above-ground elements of modern feud boundaries within this area are excluded from the provisions of the scheduling. The monument, which lies in the Parish of Orwell and the County of Kinross as shown outlined in red on the Plan annexed and executed as relative hereto 

 is hereby included in the Schedule of Monuments appearing to the Secretary of State for Scotland to be of national importance compiled and maintained by him under section 1(1) of the Ancient Monuments and Archaeological Areas Act 1979.

Given under the Seal of the Secretary of State for Scotland.

  
Assistant Secretary

Date 9 January 1998

Historic Scotland  
Longmore House  
Salisbury Place  
EDINBURGH  
EH9 1SH

Register on behalf of the Secretary of State for Scotland in the Register of the County of Kinross.

  
Solicitor, Edinburgh, Agent

MFA00375

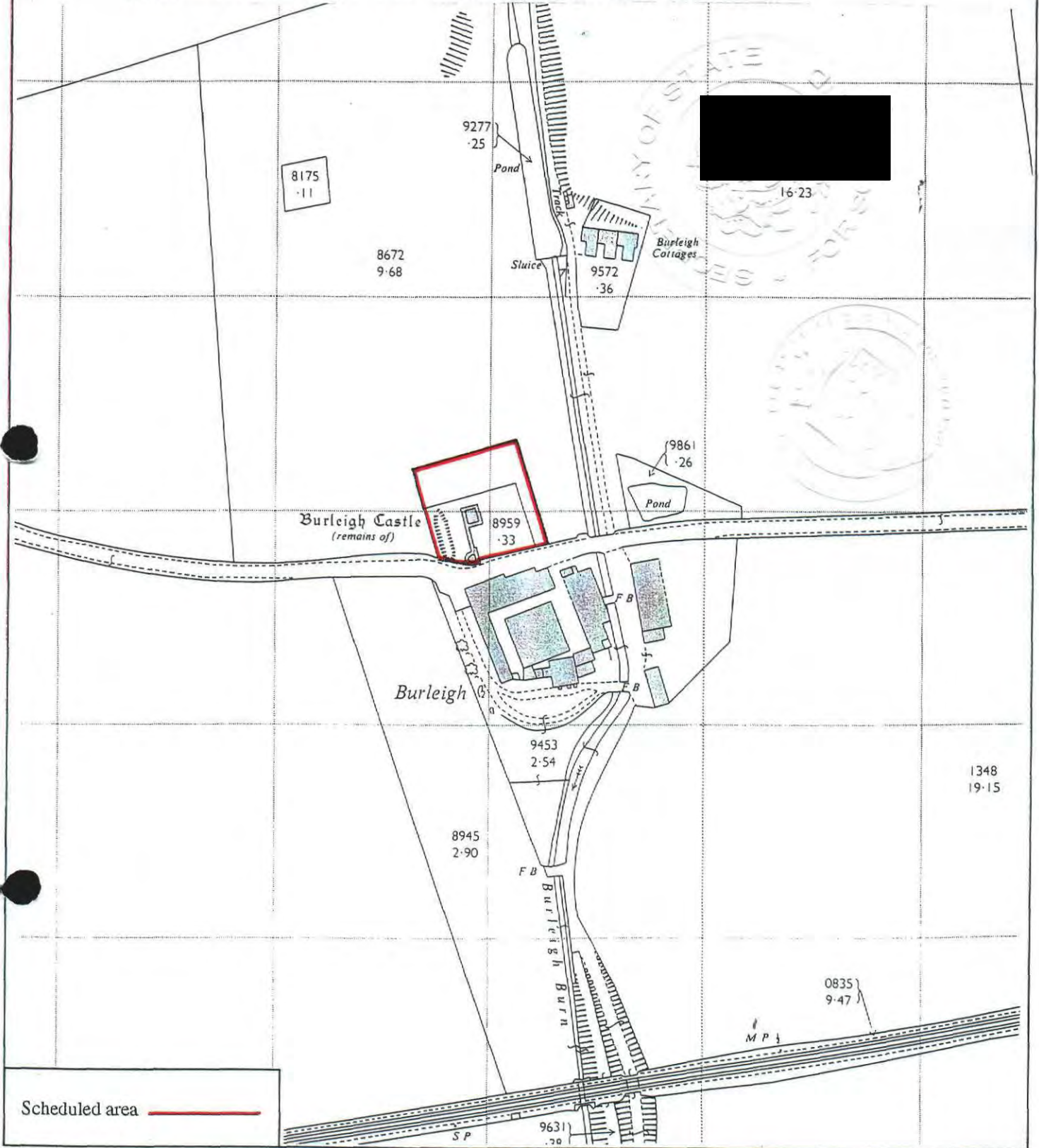
KNR - 98 - 30

REGISTERS OF SCOTLAND  
GENERAL REGISTER OF SASINES  
COUNTY OF KINROSS  
FICHE 36 FRAME 39  
PRESENTED & RECORDED ON

- 8 JUN 1998

39

This is the plan referred to in the entry in the Schedule affecting Burleigh Castle, dated 9 January 1998 and is signed as relative thereto.



Scheduled area

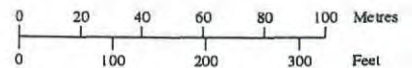
Burleigh Castle

Orwell Parish



Sheet: NO1204

Scale 1:2500



© Crown copyright reserved