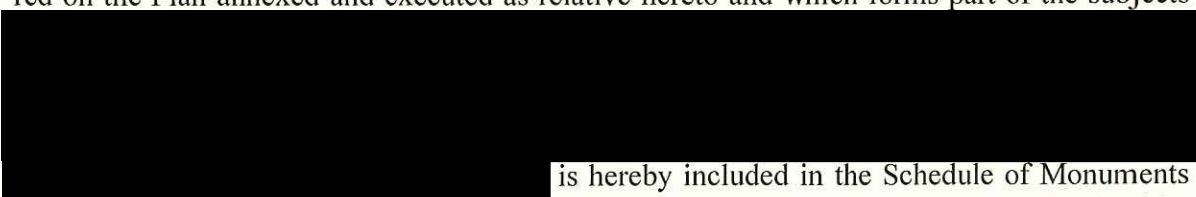


THE ANCIENT MONUMENTS AND ARCHAEOLOGICAL AREAS ACT 1979 13318
ENTRY IN THE SCHEDULE OF MONUMENTS

The monument known as **Monktonhall Junction, Neolithic cursus 150m N of Whitecraig** comprises the remains of the SSW end of a ditch-defined cursus (a ritual and ceremonial monument resembling a sacred avenue), visible as cropmarks captured on oblique aerial photographs. The cursus occupies an area of relatively level ground immediately S of Inveresk at around 20m OD. The scheduled area is irregular on plan to include the remains described above and an area around them within which evidence relating to the monument's construction, use and abandonment is expected to survive. The scheduling specifically excludes all post-and-wire fences, stone boundary walls and hedgerows for their upkeep and maintenance. The monument, which lies in the Parish of Inveresk and the County of Midlothian as shown in red on the Plan annexed and executed as relative hereto and which forms part of the subjects



is hereby included in the Schedule of Monuments appearing to the Scottish Ministers to be of national importance compiled and maintained by them under section 1(1) of the Ancient Monuments and Archaeological Areas Act 1979.

Subscribed by Barbara Cummins, Director of Heritage Management with Historic Scotland, being an officer of the Scottish Ministers at Edinburgh on the 14 day of March Two thousand and fourteen, before this witness Victoria Murray, of Longmore House, Salisbury Place, Edinburgh.

A black rectangular redaction box covering the signature of the Director of Heritage Management.

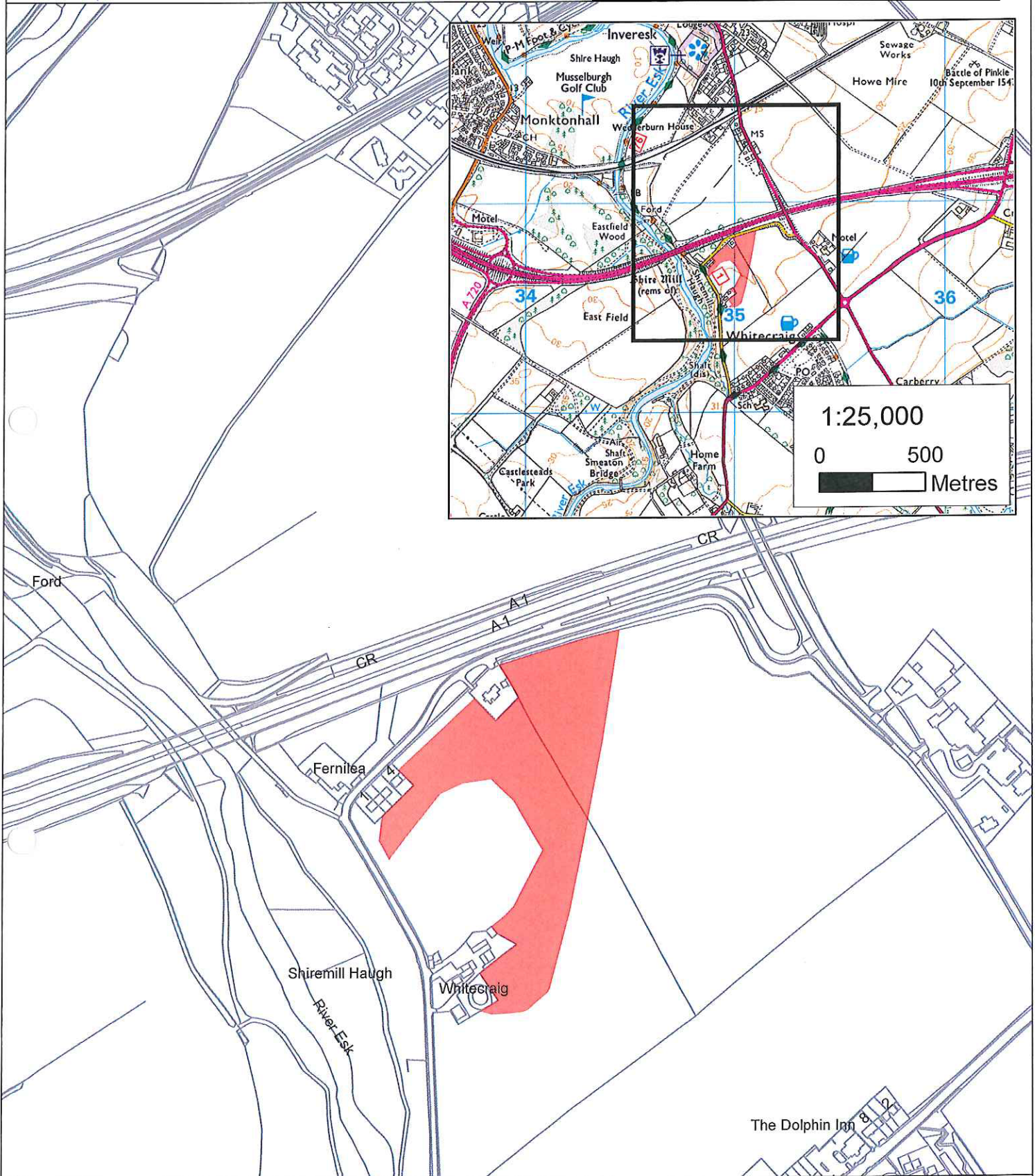
Director of Heritage Management

A black rectangular redaction box covering the signature of the witness.

Witness

This is the plan referred to in the entry in the Schedule affecting:
Monktonhall Junction, Neolithic cursus 150m N of Whitecraig

dated: 14 / 3 / 14 and is signed as relative thereto.



Index No: 13318
Monktonhall Junction, Neolithic cursus
150m N of Whitecraig

Inveresk Parish

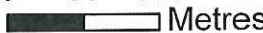
Scheduled Area 

N



Mapsheet(s):
NT37SE
NT37SW

Scale: 1:5,000

0 50 100
 Metres

This map is reproduced from Ordnance Survey material with the permission of Ordnance Survey on behalf of the Controller of Her Majesty's Stationery Office © Crown copyright. Unauthorised reproduction infringes Crown copyright and may lead to prosecution or civil proceedings. Historic Scotland Licence No. 100017509 [2012].

THE ANCIENT MONUMENTS AND
ARCHAEOLOGICAL AREAS ACT 1979

Entry in the Schedule of Monuments

2014

Re: The Monument known as
Monktonhall Junction,
Neolithic cursus 150m N of Whitecraig

in the Parish of Inveresk
and
County of Midlothian

Search Sheet No: 104696

Historic Scotland
Longmore House
Salisbury Place
Edinburgh