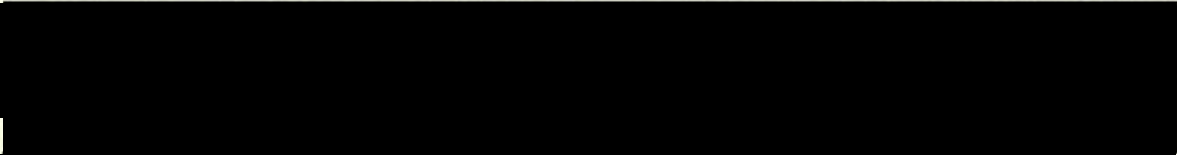



THE ANCIENT MONUMENTS AND ARCHAEOLOGICAL AREAS ACT 1979
ENTRY IN THE SCHEDULE OF MONUMENTS

11630

The monument known as Luath's Stone, standing stone, comprises a single granite standing stone of prehistoric date. The stone occupies a prominent position on a saddle between two hills, in an area of grass and heather scrub. The monument measures 2.8m in height, 1m in breadth from NE to SW and 0.7m in thickness. There are also at least four outlying smaller stones, between 0.3m and 0.5m in width, situated at a distance of between 4.5m and 5m from the standing stone, which possibly represent the remains of an associated stone circle. The area to be scheduled is circular, to include the standing stone, the outlying stones and an area in which evidence relating to the construction and use of the monument may survive. The monument, which lies in the Parish of Tough and the County of Aberdeen as shown outlined in red on the Plan annexed and executed as relative hereto

 hereby included in the Schedule of Monuments appearing to the Scottish Ministers to be of national importance compiled and maintained by them under section 1(1) of the Ancient Monuments and Archaeological Areas Act 1979.

Subscribed by Malcolm Cooper, Chief Inspector with Historic Scotland, being an officer of the Scottish Ministers at Edinburgh on the 9 day of *mar*
Two thousand and seven, before this witness Victoria Ball, of Longmore House, Salisbury Place, Edinburgh.

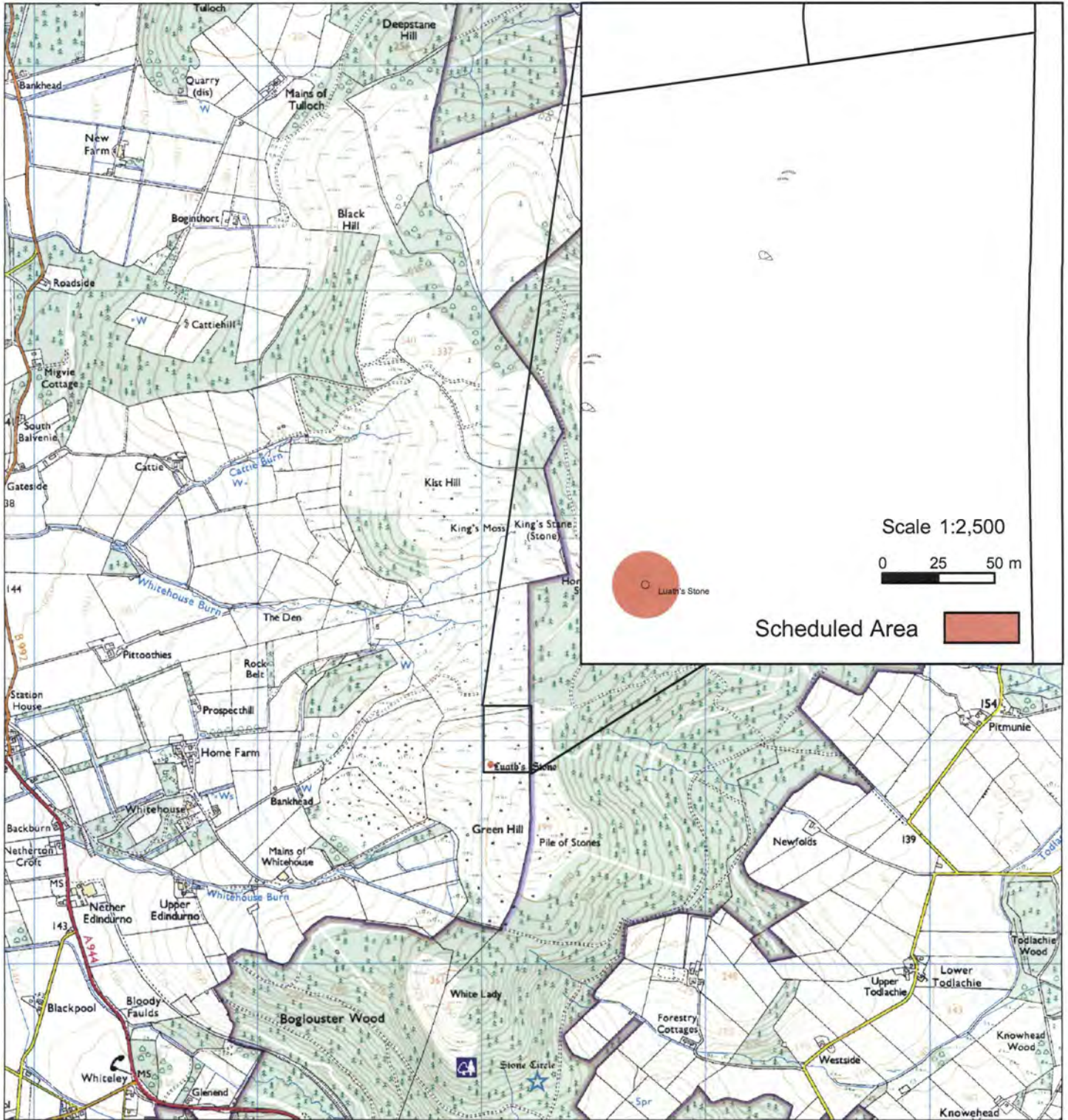

Chief Inspector

REGISTERS OF SCOTLAND
GENERAL REGISTER OF SASINES
COUNTY OF ABERDEEN
YEAR *2007*
YEARLY RUNNING NUMBER **1829**
PRESENTED AND RECORDED ON **02 MAY 2007**

MFA03297

This is the plan referred to in the entry in the Schedule affecting
Luath's Stone, standing stone

dated: 9/10 107 and is signed as relative thereto.



Index No: 11630

Luath's Stone, standing stone

Tough Parish



Representation of the
Scheduled Area



Mapsheet(s):
NJ61SW

Scale: 1:25,000

0 250 500 750 1,000 1,250 Metres

This map is reproduced from Ordnance Survey material with the permission of Ordnance Survey on behalf of the Controller of Her Majesty's Stationery Office © Crown copyright. Unauthorised reproduction infringes Crown copyright and may lead to prosecution or civil proceedings. Historic Scotland Licence No. 100017509 [2006].

Go
9

Abn ✓

THE ANCIENT MONUMENTS AND
ARCHAEOLOGICAL AREAS ACT 1979

02 MAY 2007
YEARLY RUNNING NO.

Entry in the Schedule of Monuments

2007

Re: The Monument known as
Luath's Stone, standing stone

in the Parish of Tough and
County of Aberdeen

Search Sheet No: 88921

Historic Scotland
Longmore House
Salisbury Place
Edinburgh

MFA02897

SB0181832905