

Perth

7328

12 JUN 2002  
YEAR

THE ANCIENT MONUMENTS AND  
ARCHAEOLOGICAL AREAS ACT 1979

Entry in the Schedule of Monuments

16 A

2002

Re: The Monument known as  
Bridge of Earn, Old Bridge of Earn

in the Parish of Dunbarney and  
County of Perth

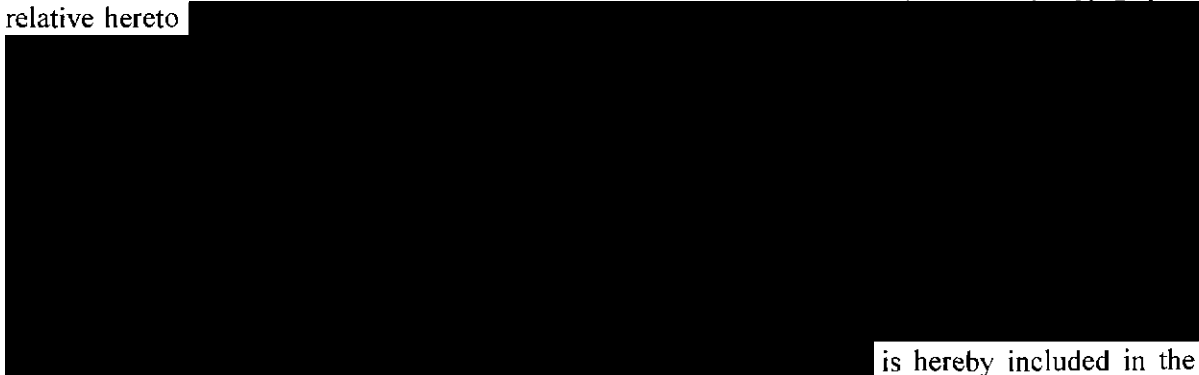
Search Sheet No: 33105  
27446  
10341

Historic Scotland  
Longmore House  
Salisbury Place  
Edinburgh

9468

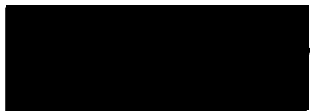
THE ANCIENT MONUMENTS AND ARCHAEOLOGICAL AREAS ACT 1979  
ENTRY IN THE SCHEDULE OF MONUMENTS

The monument known as Bridge of Earn, Old Bridge of Earn comprises the remains of the medieval Old Bridge of Earn. The monument lies immediately to the north of Bridge of Earn, with surviving components visible both in the River Earn and on its northern bank. The area to be scheduled which includes the river bed, comprises the remains described and an area around them within which related material may be expected to be found. It is irregular with maximum dimensions of 160m NNE-SSW by 50m WNW-ESE. The monument, which lies in the Parish of Dunbarney and the County of Perth as shown outlined in red on the Plan annexed and executed as relative hereto

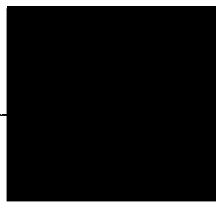


is hereby included in the Schedule of Monuments appearing to the Scottish Ministers to be of national importance compiled and maintained by them under section 1(1) of the Ancient Monuments and Archaeological Areas Act 1979.

Subscribed by Owen Kelly, Director, Properties in Care with Historic Scotland, being an officer of the Scottish Ministers at Edinburgh on the 11th day of March Two thousand and two, before this witness Lesley Macdonald, of Longmore House, Salisbury Place, Edinburgh.



Witness



Director, Properties in Care

12 JUN 2002

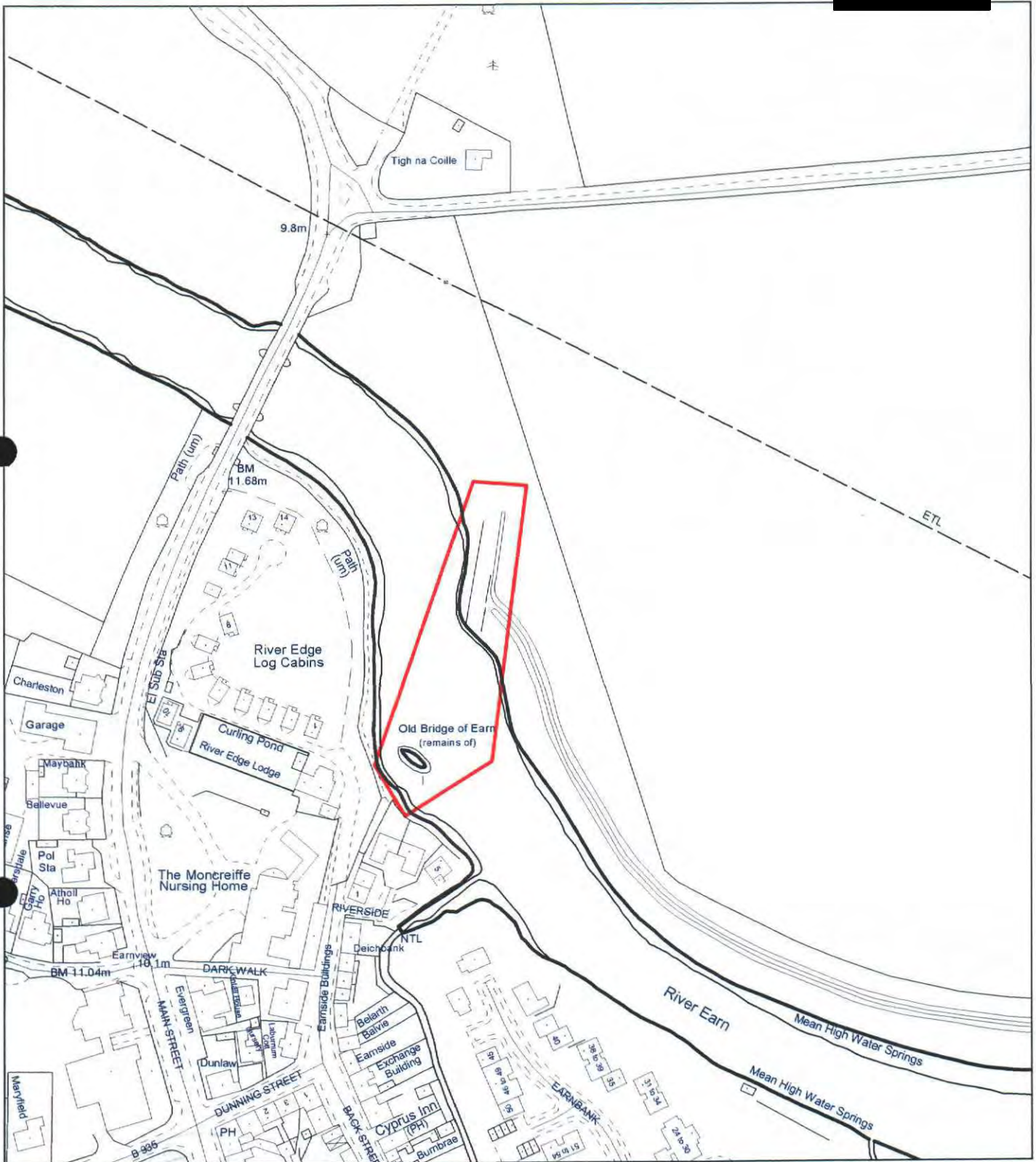
REGISTERS OF SCOTLAND  
GENERAL REGISTER OF SASINES  
COUNTY OF PERTH  
FICHE 118 FRAME 30  
PRESENTED AND RECORDED ON

Register on behalf of the Scottish Ministers in the Register of the County of Perth.




An Officer of the Scottish Ministers

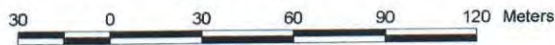
This is the plan referred to in the entry in the Schedule affecting  
 Bridge of Earn, Old Bridge of Earn,  
 dated: 11 March 2002 and is signed as relative thereto.



Bridge of Earn, Old Bridge of Earn  
 Dunbarney Parish  
 Scheduled Area

N  
  
 MapSheet: NO11NW

Scale 1:2,500



This map is reproduced from the OS map by Historic Scotland with the permission of The Controller of Her Majesty's Stationery Office, © Crown copyright. Unauthorised reproduction infringes Crown Copyright and may lead to prosecution or civil proceedings. Licence No. GD 03135G0014.